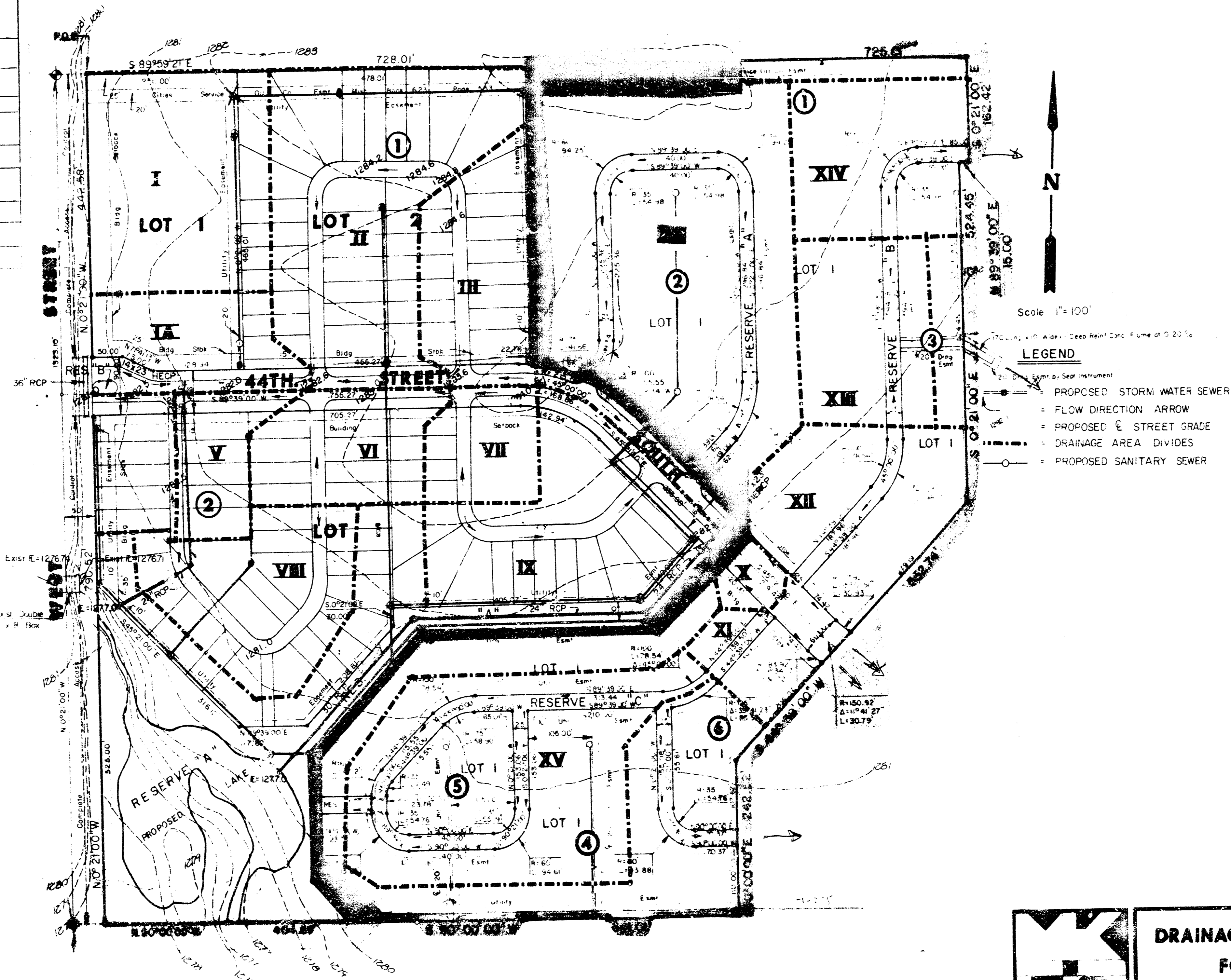


COTTONWOOD GROVE 2ND ADDITION
(Drainage)

Cottonwood Grove 2nd	AREA (Acres)	AREA ACCOM.	C	T ₁ (min)	T ₂ (hr/hr)	T ₁₀₀ (hr/hr)	Q ₁ (cfs)	Q ₁₀₀ (cfs)	PIPE SIZE	PIPE SLOPE	INLETS
III	1.4		0.70	15	3.83	7.37	3.75	7.22			
II	3.4		0.70	18	3.51	6.84	8.30	16.28			
I-A	0.8	5.6	0.70	15	3.83	7.37	2.15	4.13	14"x23" HERUP	0.20%	11,+5'
VI	0.7		0.70	15	3.83	7.37	1.48	3.61			
VI	1.2		0.70	17	3.61	7.00	3.03	5.88			
V	0.7	2.6	0.70	15	3.83	7.37	1.88	3.61	24"RCP	0.20%	11,+5'
		8.2	0.70	22	3.17	6.26	5.76	11.39			
			0.70	22	3.17	6.26	18.20	35.93			
VIII	1.8	10.0	0.70	17	3.61	7.00	4.55	8.82	24"RCP	0.25%	21,+5'
			0.70	24	3.03	6.01	21.21	42.42			
IV	5.5		0.70	22	3.17	6.26	12.20	24.10	14"x23" HERUP	0.20%	11,+5'
IX	2.3		0.70	16	3.72	7.18	5.99	11.60			
X	0.3	6.1	0.70	15	3.83	7.37	1.33	1.99	24"RCP	0.20%	11,+5'
			0.70	22	3.17	6.26	18.23	36.00			
XI	0.6		0.70	15	3.83	7.37	1.61	3.10			
XII	1.9	2.5	0.70	15	3.83	7.37	5.09	9.80			
			0.70	16	3.72	7.18	6.51	12.57			
XIII	1.5		0.70	15	3.83	7.37	4.02	7.74			
XIV	1.8		0.70	16	3.83	7.37	4.29	8.25	10"x23" HERUP	0.20%	
XV	3.7		0.70	20	3.33	6.53	8.62	16.91			



Scale: 1"=100'
 Proposed Storm Water Sewer
 Flow Direction Arrow
 Proposed Street Grade
 Drainage Area Divides
 Proposed Sanitary Sewer

	DRAINAGE PLAN FOR COTTONWOOD GROVE	KHB DLW KHB April, 1984
	MID-KANSAS ENGINEERING CONSULTANTS PA 2402 NORTH ROCK ROAD SUITE 110 OMAHA, KANSAS 68126	682-6561