

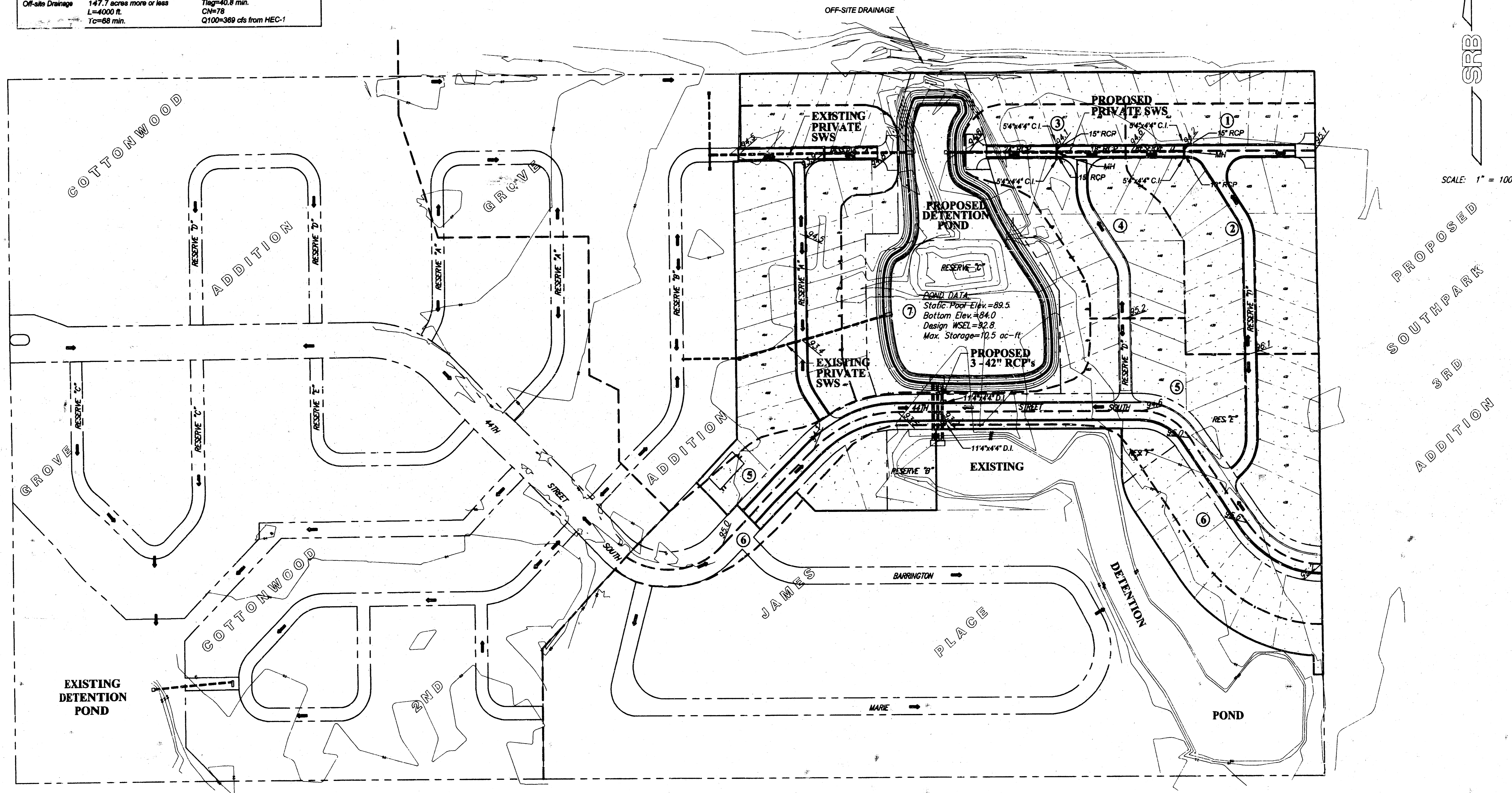
DRAINAGE DATA										
Area	Cum. Area	Tc	Soil Type "D"		I <sub>2</sub>	I <sub>100</sub>	Q <sub>2</sub>	Q <sub>100</sub>	Pipe Size and Slope	Inlets
			C <sub>2</sub>	C <sub>100</sub>						
1	0.8	0.8	0.57	0.79	3.83	7.37	1.7	4.7	15" at 0.38%	Single
2	2.8	2.8	0.57	0.79	3.83	7.37	6.1	16.3	18" at 0.34%	MH
3	0.8	0.8	0.57	0.79	3.83	7.37	1.7	4.7	15" at 0.38%	Single
4	1.6	1.6	0.57	0.79	3.83	7.37	3.5	9.3	15" at 0.38%	Single
5	4.3	4.3	0.57	0.79	3.72	7.18	9.1	24.4	3 - 42" at 0.28%	MH
6	2.6	2.6	0.57	0.79	3.83	7.37	5.7	15.1	3 - 42" at 0.28%	Double
7	7.0	7.0	0.80	0.93	3.83	7.37	21.4	48.0	3 - 42" at 0.28%	

Off-site Drainage 147.7 acres more or less  
 L=4000 ft.  
 Tc=68 min.

Trig=40.8 min.  
 C<sub>100</sub>=78  
 Q<sub>100</sub>=369 cfs from HEC-1

# DRAINAGE PLAN COTTONWOOD GROVE 3RD ADDITION

May 1, 1998



SCALE: 1" = 100'

837E\Drainage Plan Phase 3.dwg

**SRB**  
 824 NORTH MAIN WICHITA KANSAS 67203 315-264-8008  
 SAVOY, RUGGLES & BOHM, P.A.  
 ENGINEERING & SURVEYING