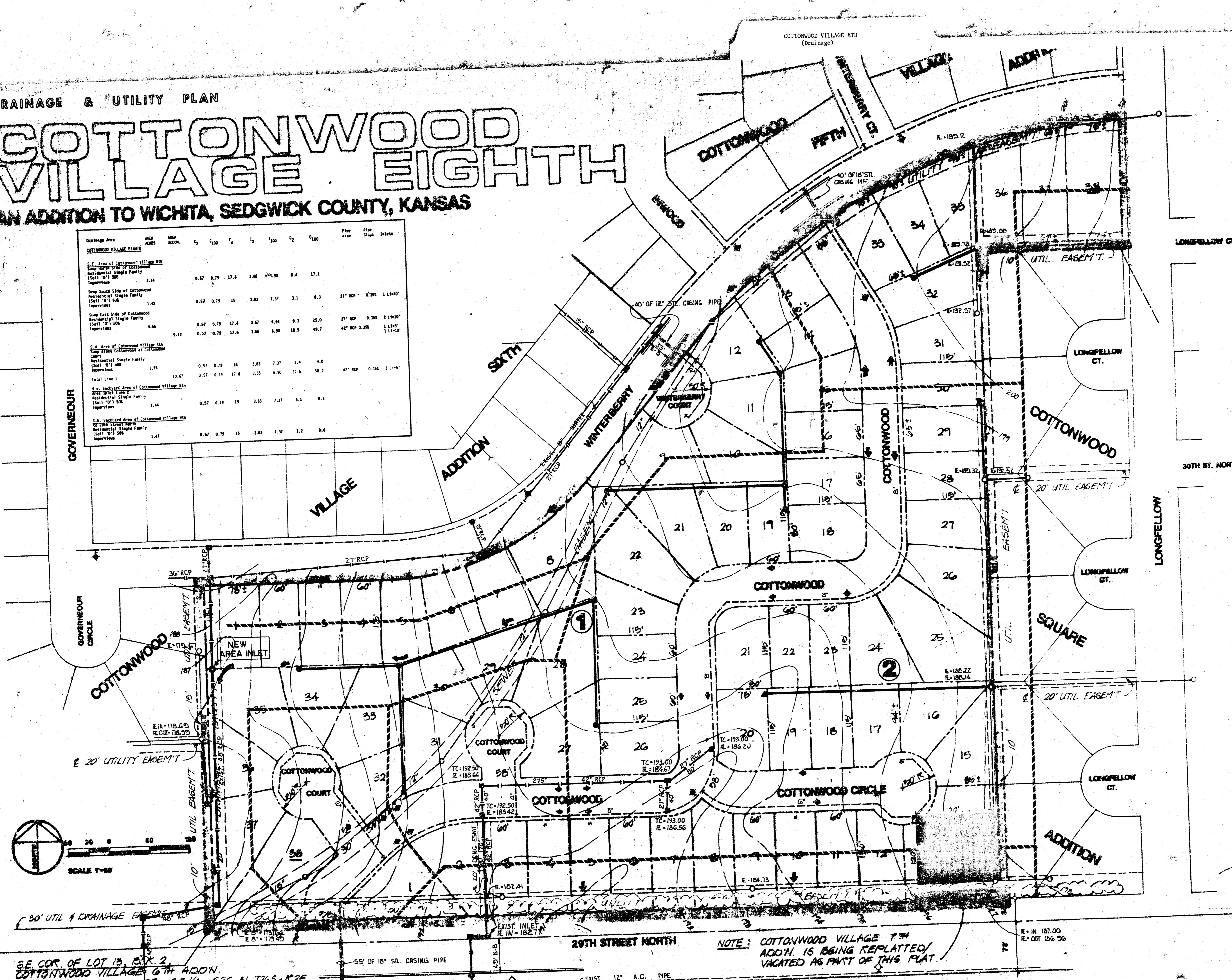


DRAINAGE & UTILITY PLAN

COTTONWOOD VILLAGE EIGHTH

AN ADDITION TO WICHITA, SEDGWICK COUNTY, KANSAS

Drainage Area	AREA ACRES	AREA ACCV.	C ₂	C ₁₀₀	T ₂	T ₁₀₀	C ₂	C ₁₀₀	Pipe Size	Pipe Slope	Inlets
COTTONWOOD VILLAGE EIGHTH											
S.E. Area of Cottonwood Village 8th Addn. 1/4 Sec. 31, T26S, R2E											
Residential Single Family (Silt "D") 50%	3.14		0.57	0.79	17.6	3.56	104.96	6.4	12.1		
Invertions									21" RCP	0.35%	1 L1+10'
Sump South Side of Cottonwood Residential Single Family (Silt "D") 50%											
Invertions	1.42		0.57	0.79	15	3.83	7.37	3.1	8.3		
Sump East Side of Cottonwood Residential Single Family (Silt "D") 50%											
Invertions	4.56		0.57	0.79	17.4	3.57	4.94	9.3	25.0		
Invertions									42" RCP	0.35%	1 L1+10'
Total Line 1	10.67										
S.W. Backyard Area of Cottonwood Village 8th Addn. 1/4 Sec. 31, T26S, R2E											
Residential Single Family (Silt "D") 50%	1.55		0.57	0.79	15	3.83	7.37	3.4	9.0		
Invertions									42" RCP	0.35%	2 L1+10'
Total Line 2	10.67										
S.W. Backyard Area of Cottonwood Village 8th Addn. 1/4 Sec. 31, T26S, R2E											
Residential Single Family (Silt "D") 50%	1.44		0.57	0.79	15	3.83	7.37	3.1	8.4		
Invertions									42" RCP	0.35%	2 L1+10'
Total Line 3	1.47										



S.E. COR. OF LOT 13, BOX 2,
COTTONWOOD VILLAGE 6TH ADDN.
30' N. & 360.03' E., S.W. COR., S.E. 1/4, SEC. 31-T26S-R2E

POS
PLANNING DEVELOPMENT SERVICES, INC.
1100 W. 15TH ST., SUITE 200
WICHITA, KS 67202
PHONE: 620-622-1100
FAX: 620-622-1101

OWNER/DEVELOPER:
LANDMARK COMMUNITIES, INC.
3500 North Rock Road Bldg. #100 Wichita, Kansas 67220



DRAWN: JULY 1987
CHECKED: SEPT. 1987
REVISED: OCT. 1987

SHEET **1** OF ONE

FILMED FROM THE BEST AVAILABLE COPY...