

To be prepared, per  
 per B. Blooper, PE.

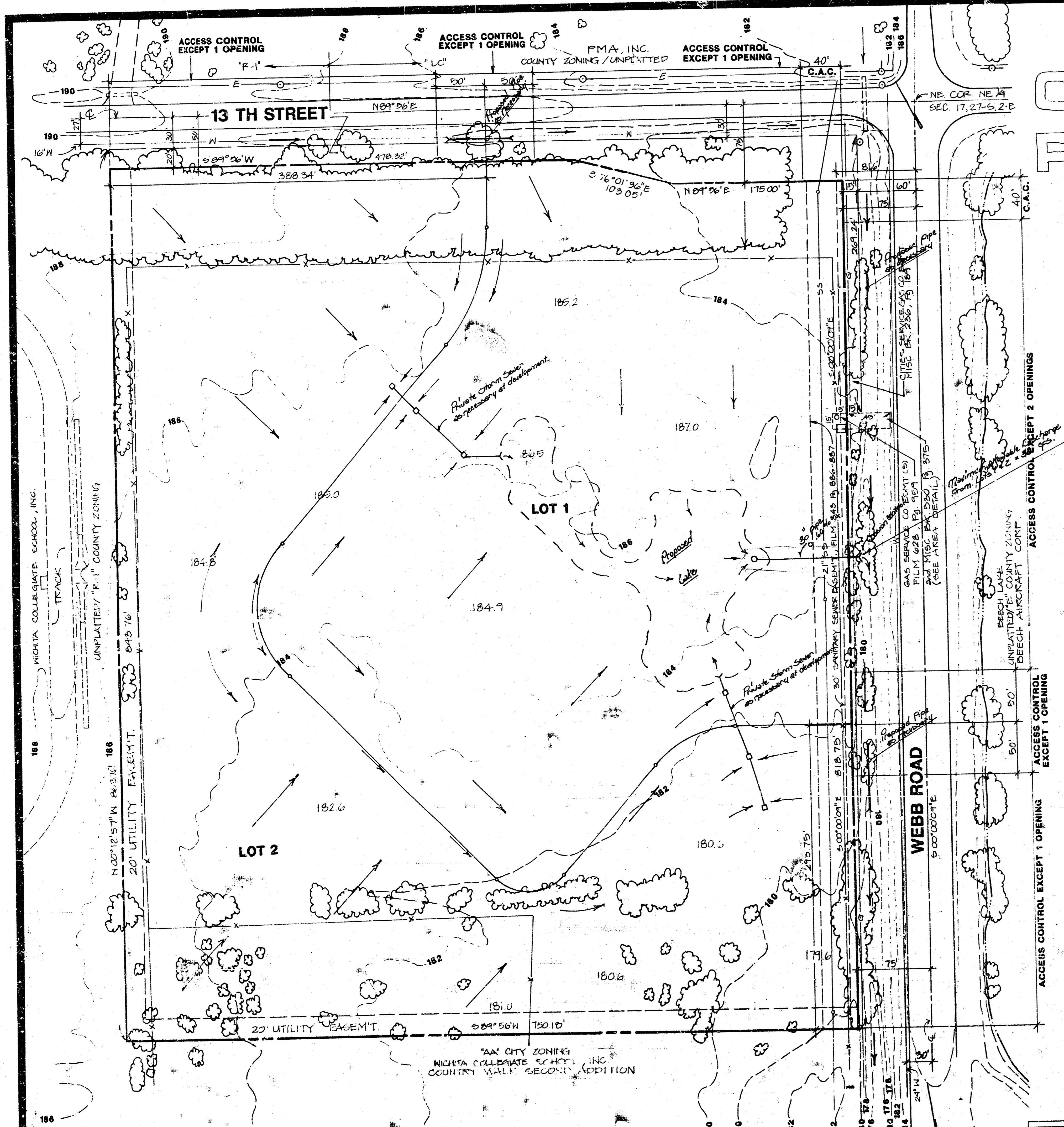
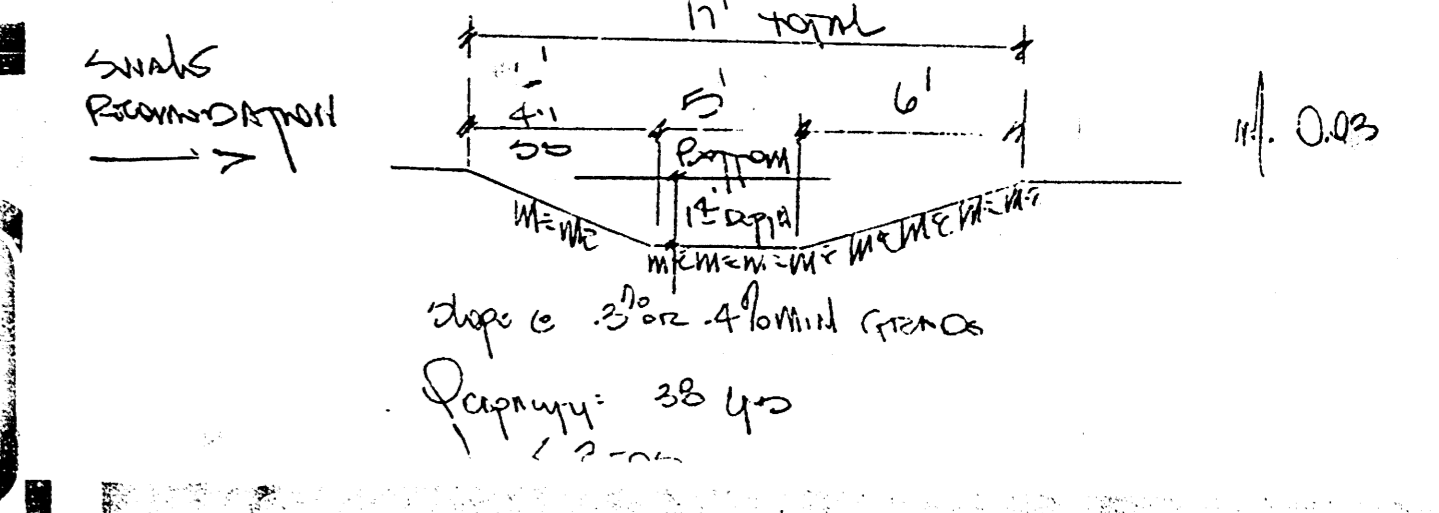
DA with 1/2" of

DA: 48 AC  
 C: 0.8  
 D: 18 cfs Design flow

Density for  
 Recommendation  
 21' c 1.20  
 24' c 0.65

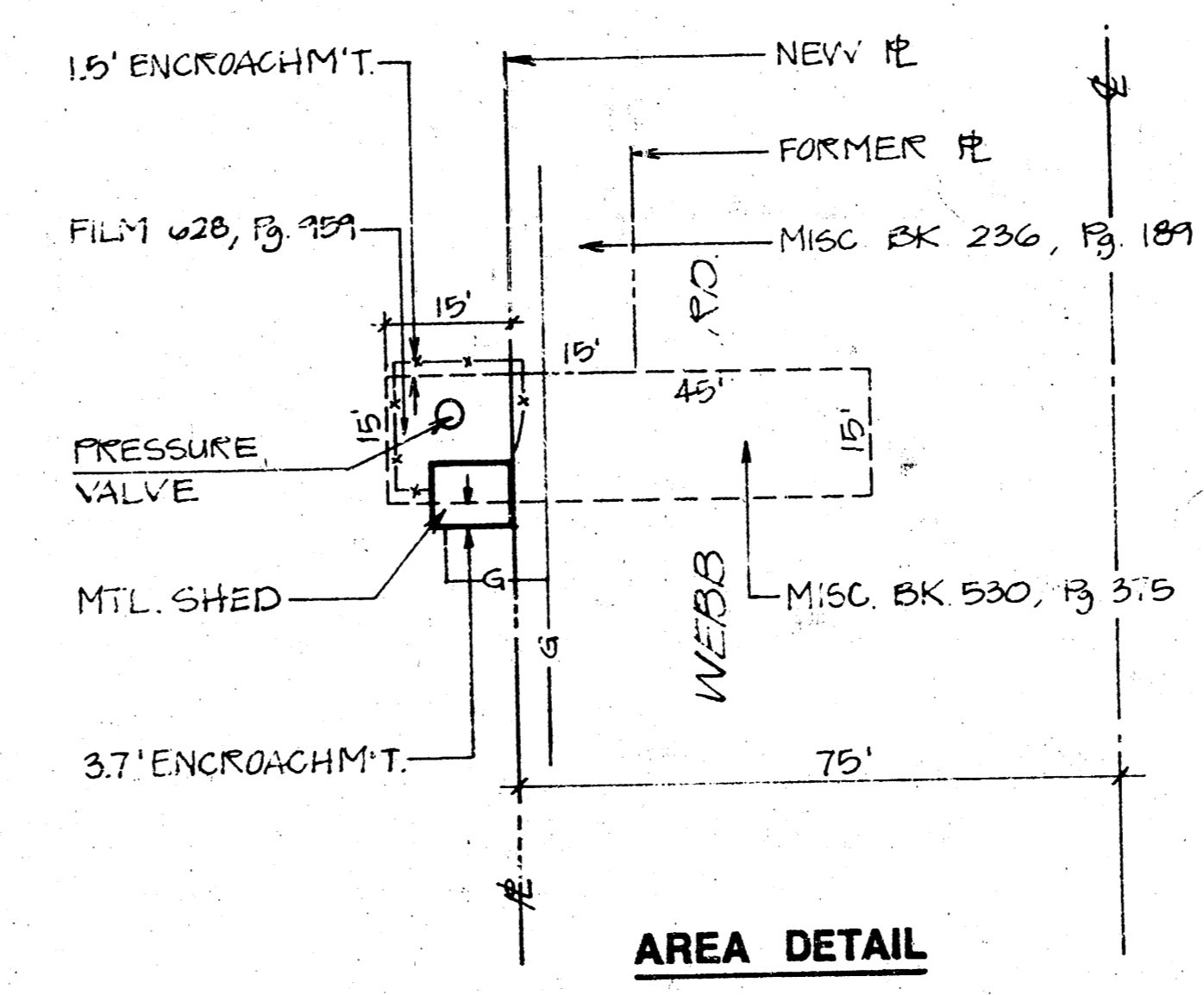
DA disconnecting to old corridor of drop access  
 RTR of C.P.R.C. Addition to WEBB RD.

DA: 79 AC  
 C: 0.65 design school  
 D: 36 cfs Design flow

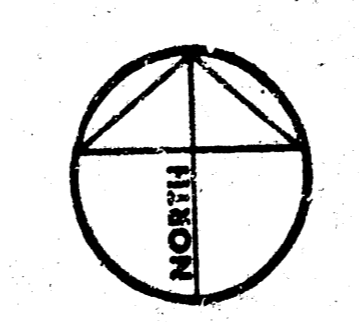
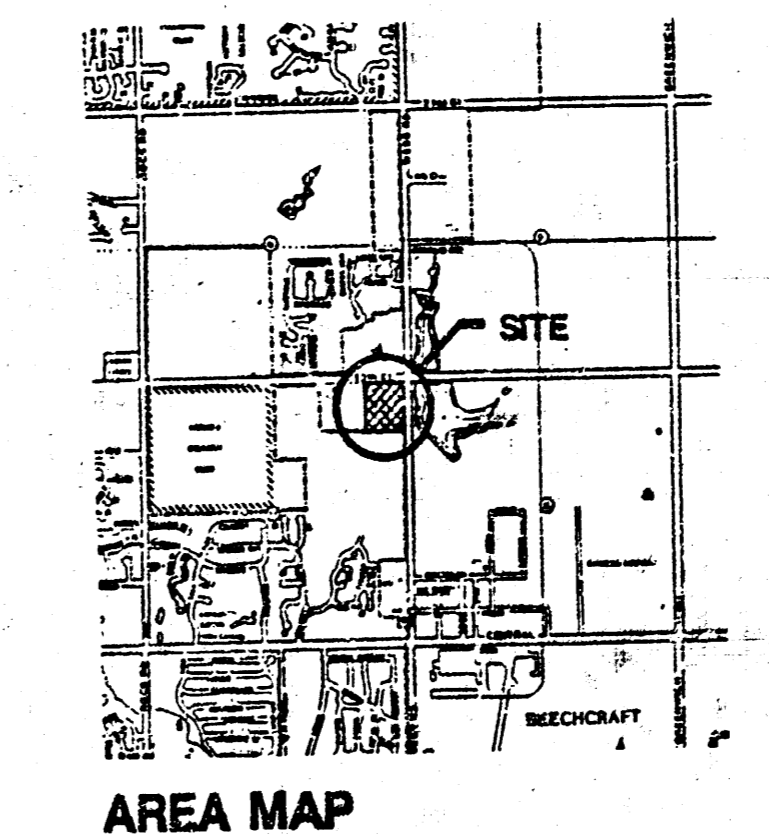


# PRELIMINARY PLAT COUNTRY CLUB PARK ADDITION

WICHITA, SEDGWICK COUNTY, KANSAS



**NOTES:**  
 Associated applications are Zone Case Z-2923, and Country Club Park Commercial Community Unit Plan (DP-186).  
 There are 15.0 +/- gross acres, and 14.43 +/- net acres in subject plat.  
 Photogrammetry / topography by Miles Air Photo Survey, 1221 Thurston St., Manhattan, Ka. 66502, (913) 539-3130, File M-205, P-118, June 1985.  
 Bench Mark: Chiseled square at SW corner of RCBC on the west side of Webb Road, 1400' +/- south of 13th St., Elev. 170.14 City datum.  
 A Drainage Concept Plan has been prepared by Baughman Co., P.A., Surveying Engineering.  
 Building setbacks as per the Country Club Park Commercial C.U.P. (DP-186).



SCALE 1" = 50'

TOPOGRAPHY - JUNE, 1985  
 CONTOUR INTERVAL @ 2 FEET  
 9/23/85

824 N. Main  
 WICHITA, KS 67203  
 INCORPORATED  
 PLANNING DEVELOPMENT SERVICES

PRELIMINARY PLAT OF COUNTRY CLUB PARK ADDITION  
 WICHITA, SEDGWICK COUNTY, KANSAS  
 OWNER/DEVELOPER: COUNTRY CLUB PARK ASSOCIATES L.P.  
 9920 E. HARRY WICHITA, KANSAS 67207 (316) 686-1222

DRAWN SEPT. 1985  
 CHECKED  
 REVISED

ONE

**BAUGHMAN COMPANY, P.A.**  
 SURVEYING & ENGINEERING  
 316 262-7271 • 315 ELLIS • WICHITA, KANSAS 67211

**DRAINAGE REPORT**  
 COUNTRY CLUB PARK ADDITION  
 WICHITA, KANSAS  
 OCTOBER 24, 1988

The proposed two lot plat will be developed for light commercial and office park developments. The development will consist of private streets, parking lots, building complexes, and a lake facility. The lots will drain to the proposed lake by private storm sewers and be discharged by a controlled storm sewer into the Webb Road ditches and continue south. The amount of discharge from the lake will be limited to 32 C.F.S., which is approximately the amount of the undeveloped runoff flow from the site under existing conditions is equivalent to 32 C.F.S.

The proposed lake facility will be capable of retaining the increased amount of developed runoff from the site. Lot 2 will drain across Lot 1 at several locations. A cross lot drainage agreement will be filed for the two lots within the plat.

Final development plans will determine the actual configuration and design of the internal streets, storm sewers, and lake facility.