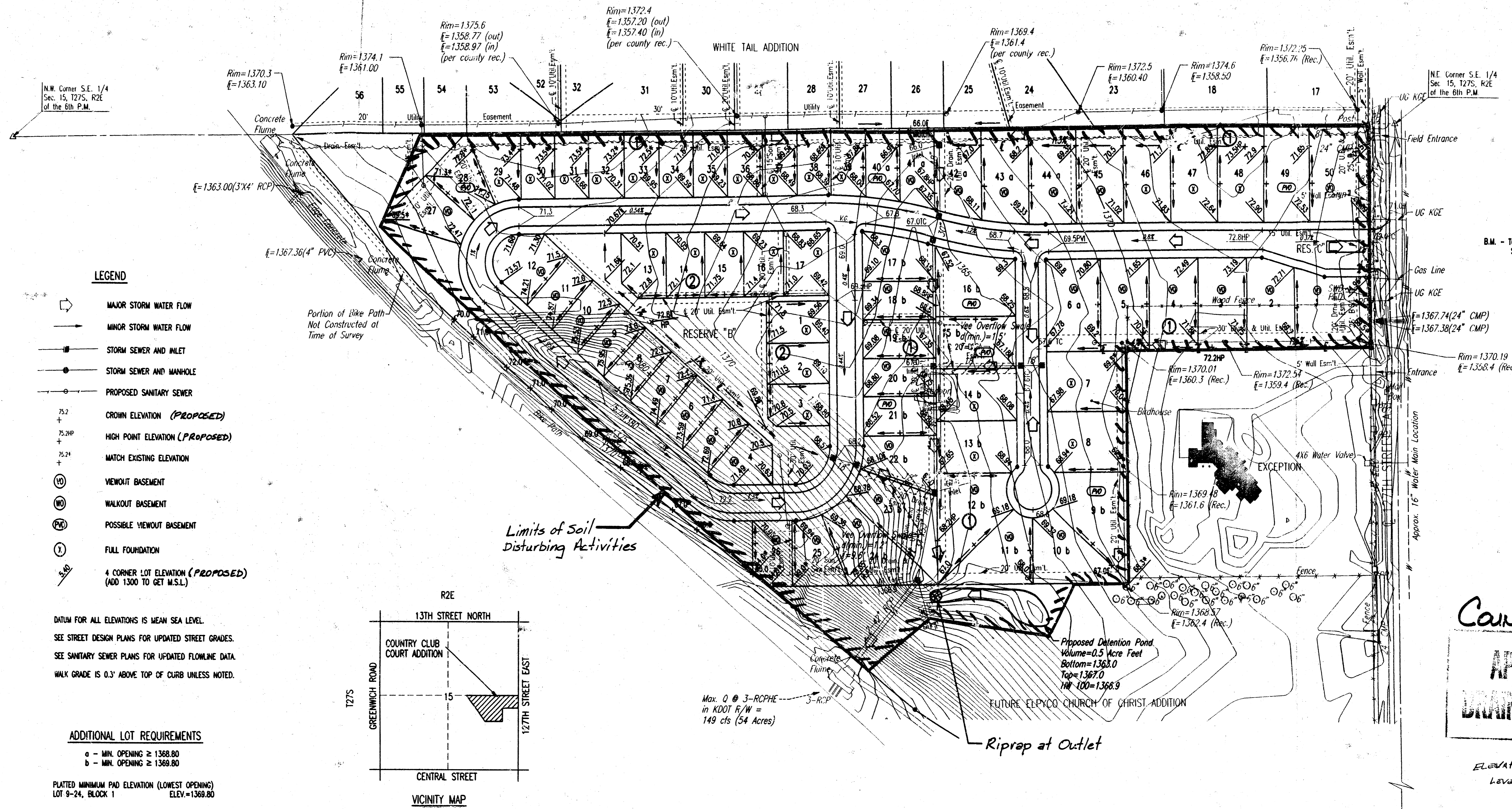


# FOUR CORNER LOT GRADING & UTILITY PLAN FOR COUNTRY CLUB COURT ADDITION TO SEDWICK COUNTY, KANSAS



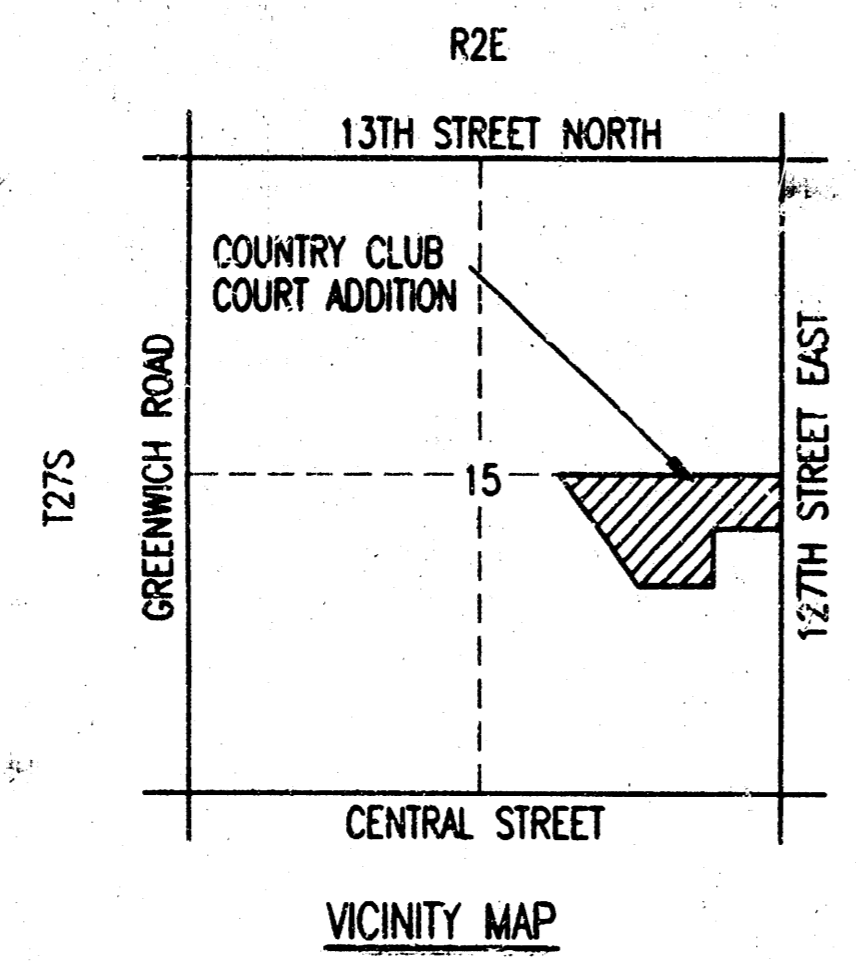
**LEGEND**

- MAJOR STORM WATER FLOW
- MINOR STORM WATER FLOW
- STORM SEWER AND INLET
- STORM SEWER AND MANHOLE
- PROPOSED SANITARY SEWER
- CROWN ELEVATION (PROPOSED)
- HIGH POINT ELEVATION (PROPOSED)
- MATCH EXISTING ELEVATION
- VIEWOUT BASEMENT
- WALKOUT BASEMENT
- POSSIBLE VIEWOUT BASEMENT
- FULL FOUNDATION
- 4 CORNER LOT ELEVATION (PROPOSED)  
(ADD 1300 TO GET M.S.L.)

DATUM FOR ALL ELEVATIONS IS MEAN SEA LEVEL.  
SEE STREET DESIGN PLANS FOR UPDATED STREET GRADES.  
SEE SANITARY SEWER PLANS FOR UPDATED FLOWLINE DATA.  
WALK GRADE IS 0.3' ABOVE TOP OF CURB UNLESS NOTED.

**ADDITIONAL LOT REQUIREMENTS**

- a - MIN. OPENING ≥ 1368.80
  - b - MIN. OPENING ≥ 1369.80
- PLATTED MINIMUM PAD ELEVATION (LOWEST OPENING)  
LOT 9-24, BLOCK 1 ELEV.=1369.80



SCALE: 1"=100'  
● = IRON SET

B.M. - TOP OF IRON AT N.E. CORNER S.E. 1/4,  
SEC. 15, T27S, R2E OF THE 6TH P.M.  
ELEV.=1372.44 M.S.L.

**COUNTRY CLUB COURT  
APPROVED  
DRAINAGE PLAN  
ATSDW.**

ELEVATIONS ARE IN MEAN SEA  
LEVEL. ADD 1300 TO NUMBERS!

SE Corner S.E. 1/4  
Sec. 15, T27S, R2E  
of the 6th P.M.

1. Inlet Protection to be provided at all SWS Inlets
2. Silt Fence to be installed on sloped surfaces.

NPDES - **Att. 3**  
RAT CARD MARKED 2 DEC 1999

REVISED 12/17/97  
REVISED 9/8/97  
REVISED 7/31/97  
**275**

DSNR, GDD, OPER. DNR, SCALE: 1"=100.00  
 9.1.1997(3/28/92) 4-CORNER 02-09-1999 02:20:13 PM