

SCALE 1"=100'
 C.I.-2' Date 6-28-85
 B.M. - City of Wichita Bench Mark Disc.
 34' East and 44' South of NE Cor.
 SE 1/4 Sec. 17 - 27S - R2E
 Elev. = 172.92 City Datum, 1360.32 M.S.L.

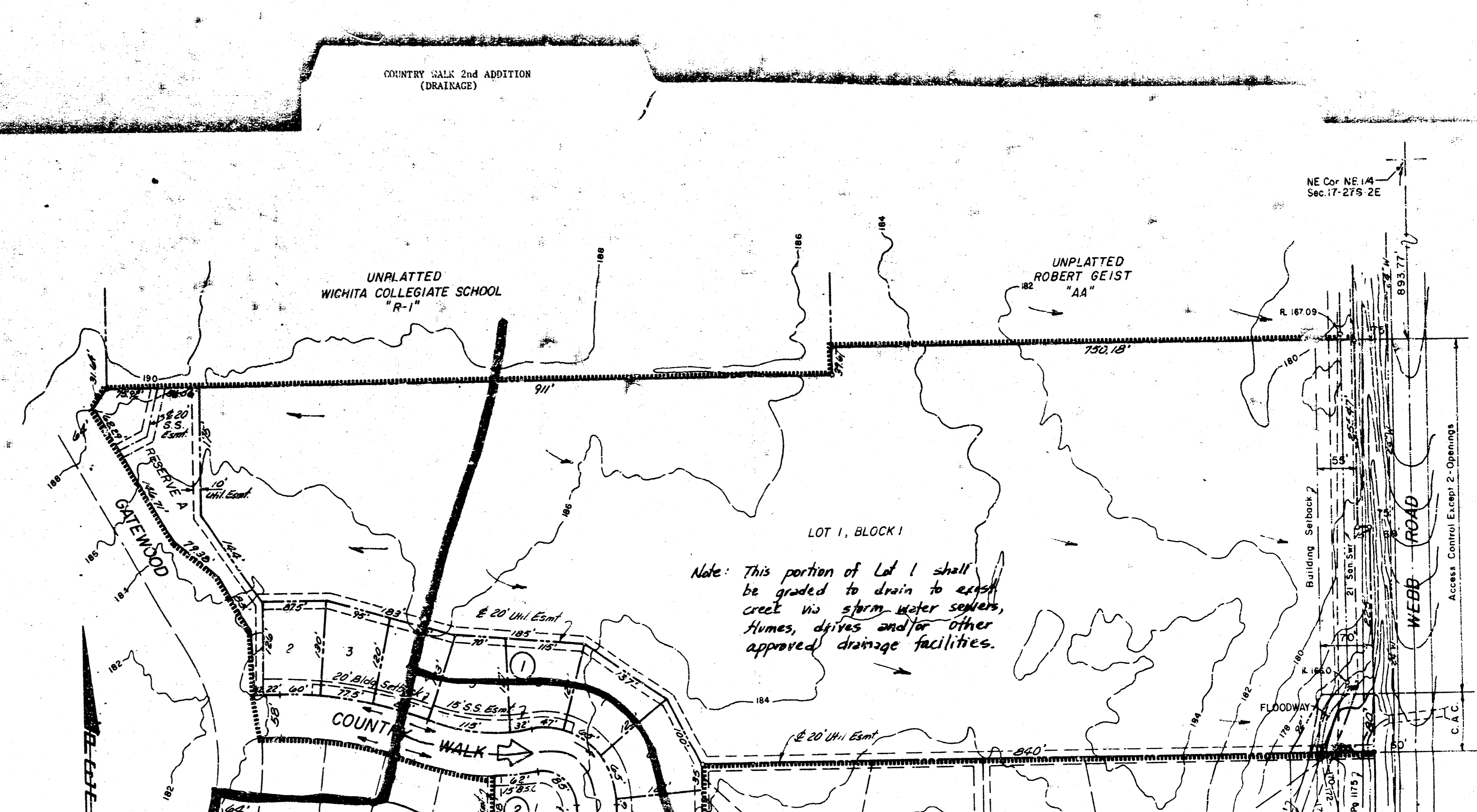
NOTE: Reserve "A" is plotted for entry monuments, earth berms, walls, landscaping, and utilities confined within easements.

LEGEND

Plat Limits
 Drainage Basin Boundary
 Drainage Sub-Basin Bldry
 Drain. Direction - Minor Storm
 Drain. Direction - Major Storm

DRAINAGE PLAN
COUNTRY WALK 2ND. ADD.

OWNER / DEVELOPER • LAKEPOINT COMPANY % JACK RITCHIE
 8100 E. 22ND. ST. N. - BLDG. 500 WICHITA, KS. 67226
 ENGINEER • PROFESSIONAL ENGINEERING CONSULTANTS, P.A.
 1440 E. ENGLISH WICHITA, KS. 67211



SCALE 1"=100'
 C.I.-2' Date 6-28-85
 B.M. - City of Wichita Bench Mark Disc.
 34' East and 44' South of NE Cor.
 SE 1/4 Sec. 17 - 27S - R2E
 Elev. = 172.92 City Datum, 1360.32 M.S.L.

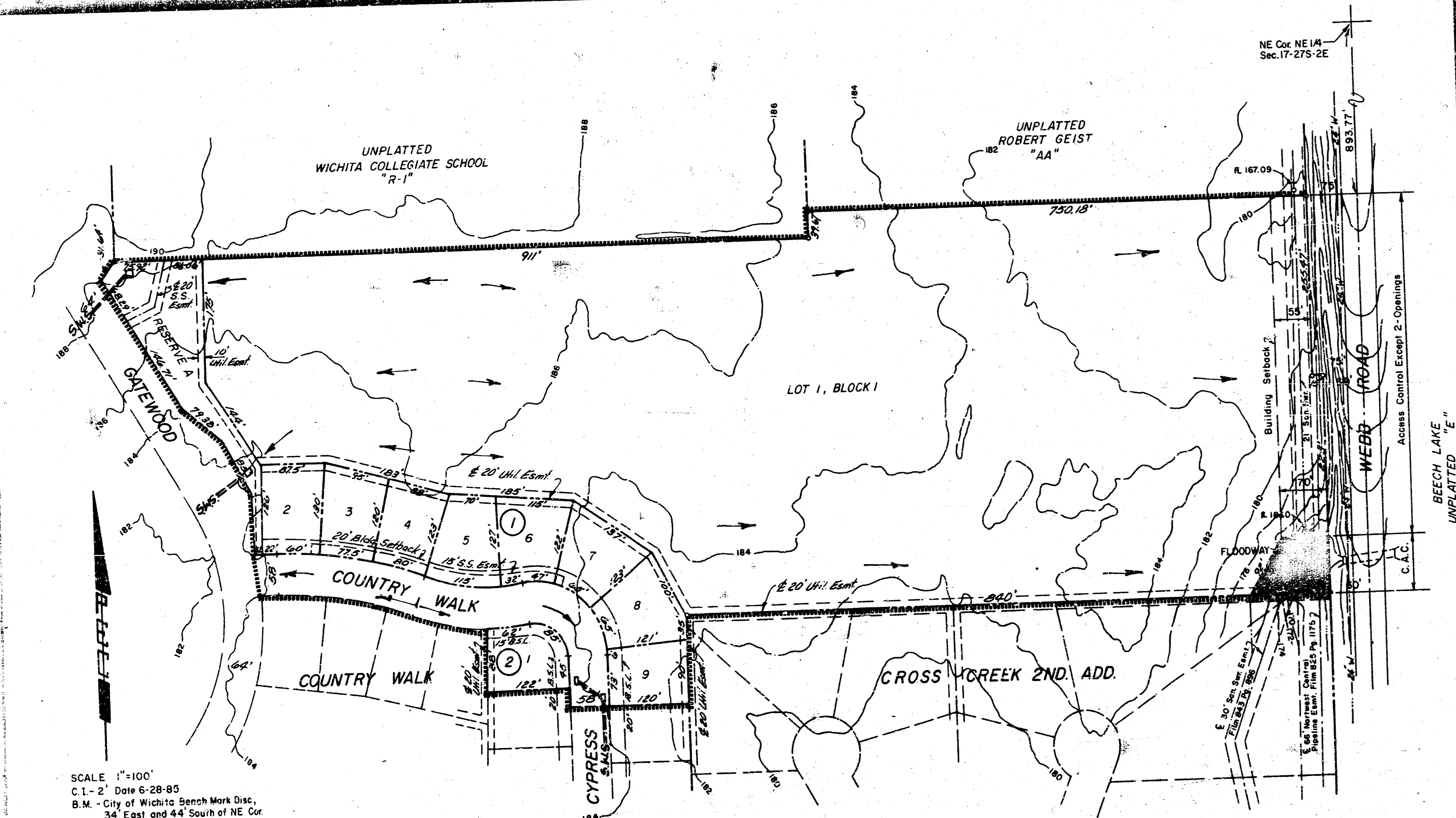
NOTE: Reserve "A" is plotted for entry monuments, earth berms, walls, landscaping, and utilities confined within easements.

LEGEND

Plat Limits
 Drainage Basin Boundary
 Drainage Sub-Basin Bldry
 Drain. Direction - Minor Storm
 Drain. Direction - Major Storm

DRAINAGE PLAN
COUNTRY WALK 2ND. ADD.

OWNER / DEVELOPER • LAKEPOINT COMPANY % JACK RITCHIE
 8100 E. 22ND. ST. N. - BLDG. 500 WICHITA, KS. 67226
 ENGINEER • PROFESSIONAL ENGINEERING CONSULTANTS, P.A.
 1440 E. ENGLISH WICHITA, KS. 67211



SCALE 1"=100'
 C.I.-2' Date 6-28-85
 B.M. - City of Wichita Bench Mark Disc.
 34' East and 44' South of NE Cor.
 SE 1/4 Sec. 17 - 27S - R2E
 Elev. = 172.92 City Datum, 1360.32 M.S.L.

NOTE: Reserve "A" is plotted for entry monuments, earth berms, walls, landscaping, and utilities confined within easements.

DRAINAGE CONCEPT
COUNTRY WALK 2ND. ADD.

OWNER / DEVELOPER • LAKEPOINT COMPANY % JACK RITCHIE
 8100 E. 22ND. ST. N. - BLDG. 500 WICHITA, KS. 67226
 ENGINEER • PROFESSIONAL ENGINEERING CONSULTANTS, P.A.

FILMED FROM THE BEST AVAILABLE COPY