

Bench Mark: "□" cut on top of curb at S.E. corner Cox Machine Add. Elev. 1321.84

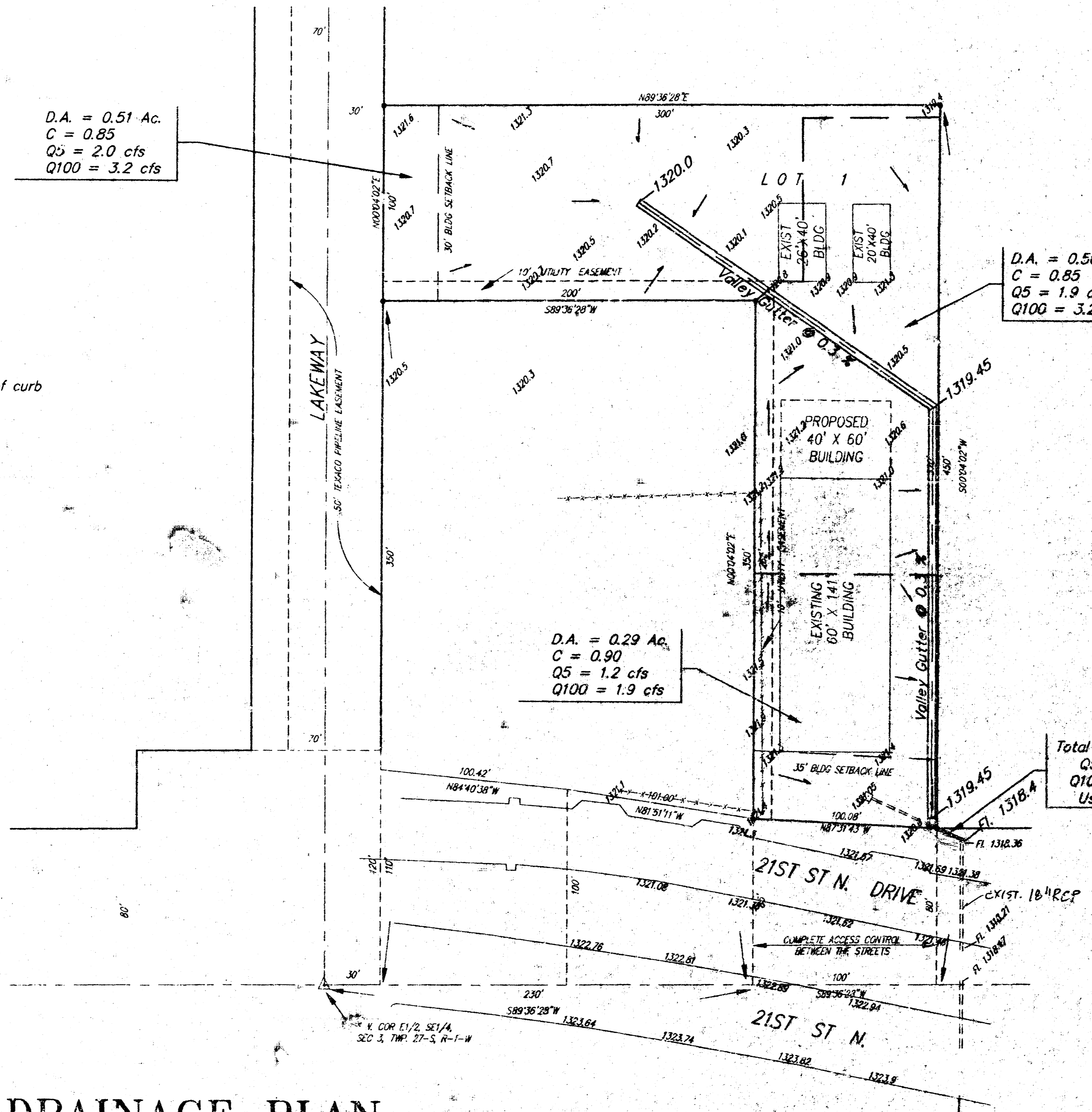
RATIONAL METHOD
Basin parameters
Time of Concentration = 15 minutes
15 = 4.56 $\frac{1}{hr}$
1100 = 7.37 $\frac{1}{hr}$

D.A. = 0.51 Ac.
C = 0.85
Q5 = 2.0 cfs
Q100 = 3.2 cfs

D.A. = 0.50 Ac.
C = 0.85
Q5 = 1.9 cfs
Q100 = 3.2 cfs

D.A. = 0.29 Ac.
C = 0.90
Q5 = 1.2 cfs
Q100 = 1.9 cfs

Total D.A. = 1.3 Ac.
Q5 = 5.1 cfs
Q100 = 8.3 cfs
Use 18" pipe



DRAINAGE PLAN COX MACHINE ADDITION

WICHITA, SEDGWICK COUNTY, KANSAS

SRB 847 SOUTH HILLSIDE, WICHITA, KANSAS 67211
316-682-7784 FAX 316-682-7932
SAVOY, RUGGLES & BOHM, P.A.
ENGINEERING & SURVEYING

3-16-94