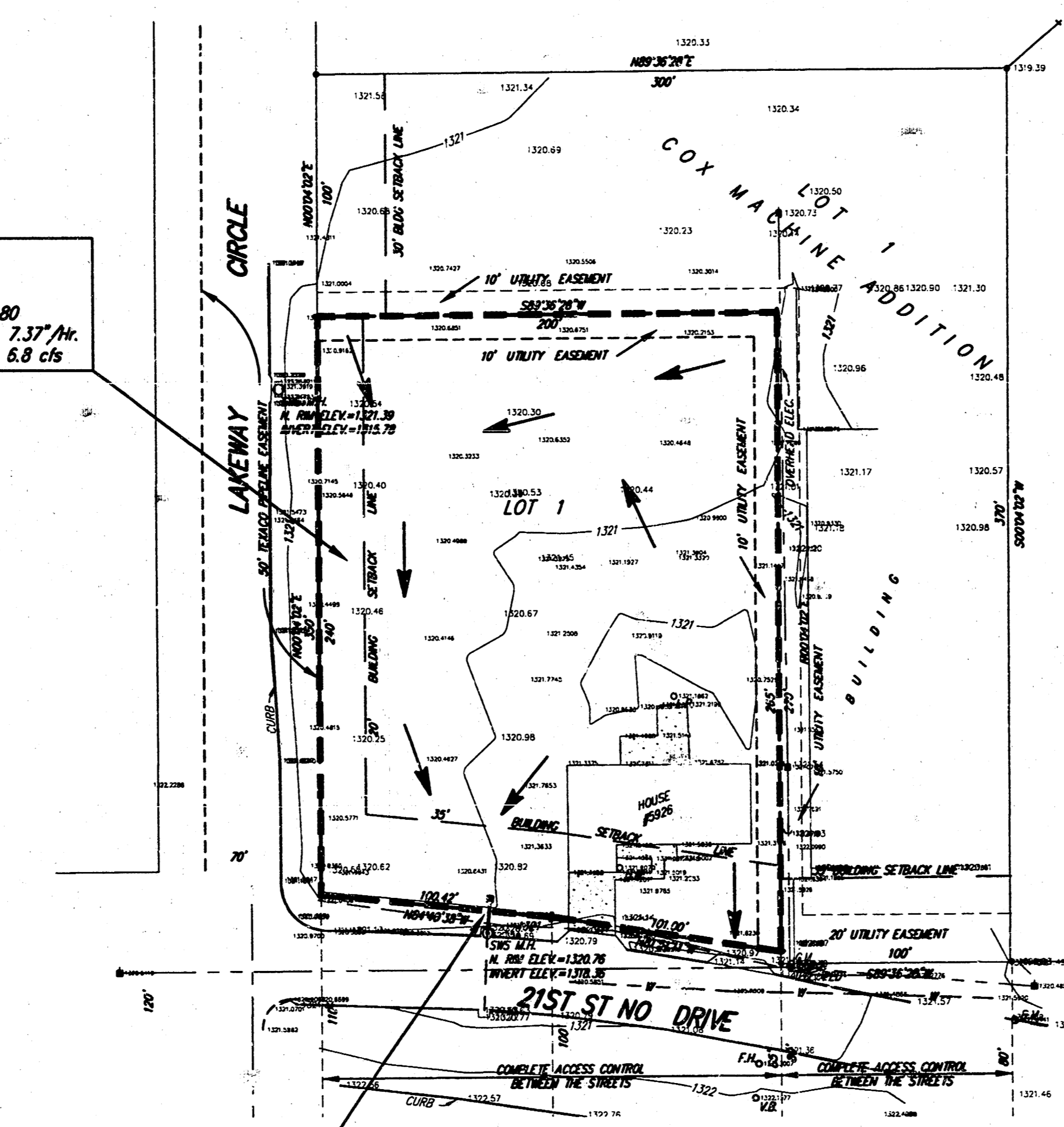


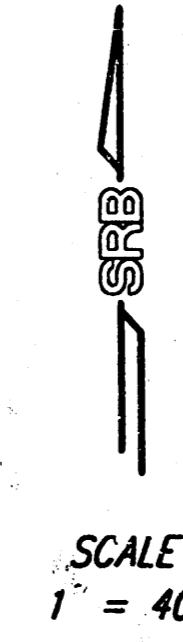
DRAINAGE PLAN COX MACHINE 2ND ADDITION

WICHITA, SEDGWICK COUNTY, KANSAS

Area = 1.15 Acres
Hydrologic Soil Group B
 $T_c = 15$ Minutes
 $C_s = 0.65$ $C_{so} = 0.80$
 $S = 4.56$ /hr. $R_{100} = 7.37$ /hr.
 $Q_s = 3.6$ cfs $Q_{100} = 6.8$ cfs



CONSTRUCT AREA INLET. CONNECT TO EXISTING MANHOLE WITH 15" RCP.



BENCH MARK:
1" CUT ON TOP OF CURB
100' E. OF S.E. COR. OF SUBJECT PROPERTY
ELEV. = 1321.84 (NCHD)

DRAINAGE PLAN	
COX MACHINE 2ND ADDITION	
SRB 874 NORTH MAIN WICHITA, KANSAS 67203	316-264-8008 FAX 316-264-4821
SAVOY, RUGGLES & BOHM, P.A.	
ENGINEERING & SURVEYING	
PROJECT NUMBER	
DESIGN	DATE
CHKD	DEC. 26, 1999