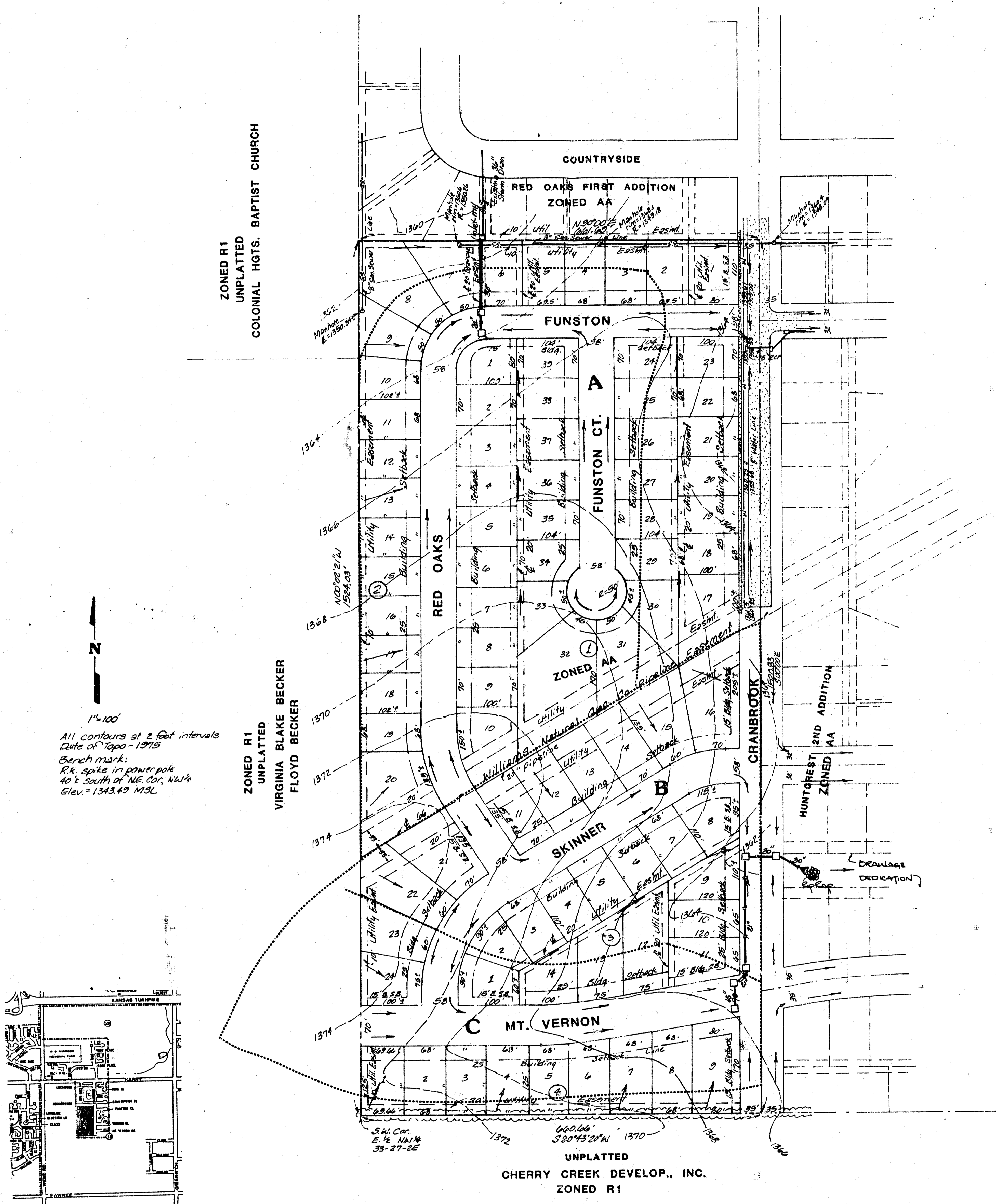
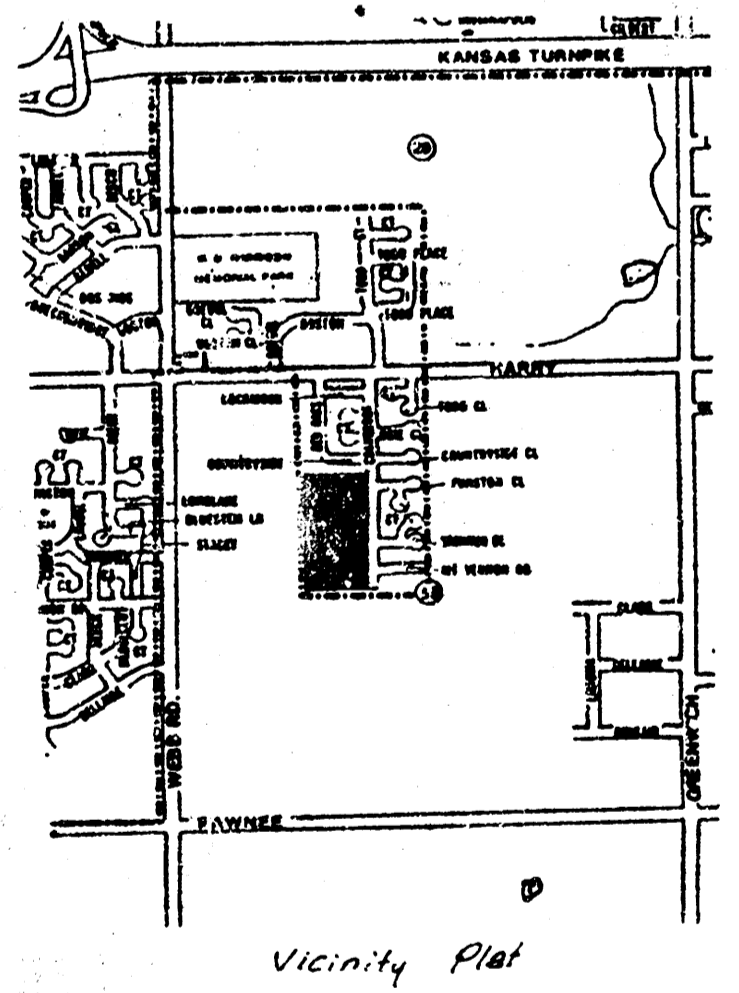


Cranbrook Add.



1"=100'
 All contours at 2 foot intervals
 Date of Topo - 1975
 Bench mark:
 RR spike in power pole
 40' S of NE cor. NW 1/4
 Elev. = 1343.49 MSL



ZONED R1
 UNPLATTED
 COLONIAL HGTS. BAPTIST CHURCH

ZONED R1
 UNPLATTED
 VIRGINIA BLAKE BECKER
 FLOYD BECKER

PRELIMINARY PLAT
CRANBROOK ADDITION

A TRACT IN THE E1/2 OF THE
 NW1/4 OF SEC. 33 27-2E

OWNERS: JIM COHLMIA
 SAMMY KHOURI
 HARRY KHOURI JR.

UNPLATTED
 CHERRY CREEK DEVELOP., INC.
 ZONED R1

DRAINAGE CALCULATIONS

AREA	ACRES	C	Q2 CFS	Q100 CFS	PIPE DESIGN R.C.P.	NOTES
A	9.2	0.5	27.3	52.5	36" AT 0.60% 24" AT 0.60%	100 YEAR SUMP DISCHARGE INLET MANHOLE AT REAR LOT CROSS-STREET PIPE
B	5.3	0.5	15.7	30.3	30" AT 0.67%	2 YEAR DISCHARGE WITH 100 YR. OVERFLO TO DITCH
C	5.0	0.5	14.8	28.5	21" AT 0.90% 15" AT 0.90%	2 YEAR DISCHARGE WITH 100 YEAR BYPASS TO SUMP CROSS-STREET PIPE

DRAINAGE PLAN

BAUGHMAN COMPANY, P.A.
 SURVEYING & ENGINEERING
 3100 202 7271 • 315 1118 • WICHITA, KANSAS 67211