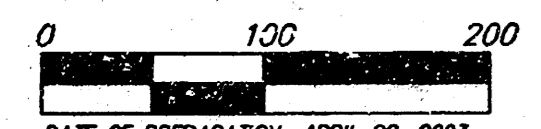
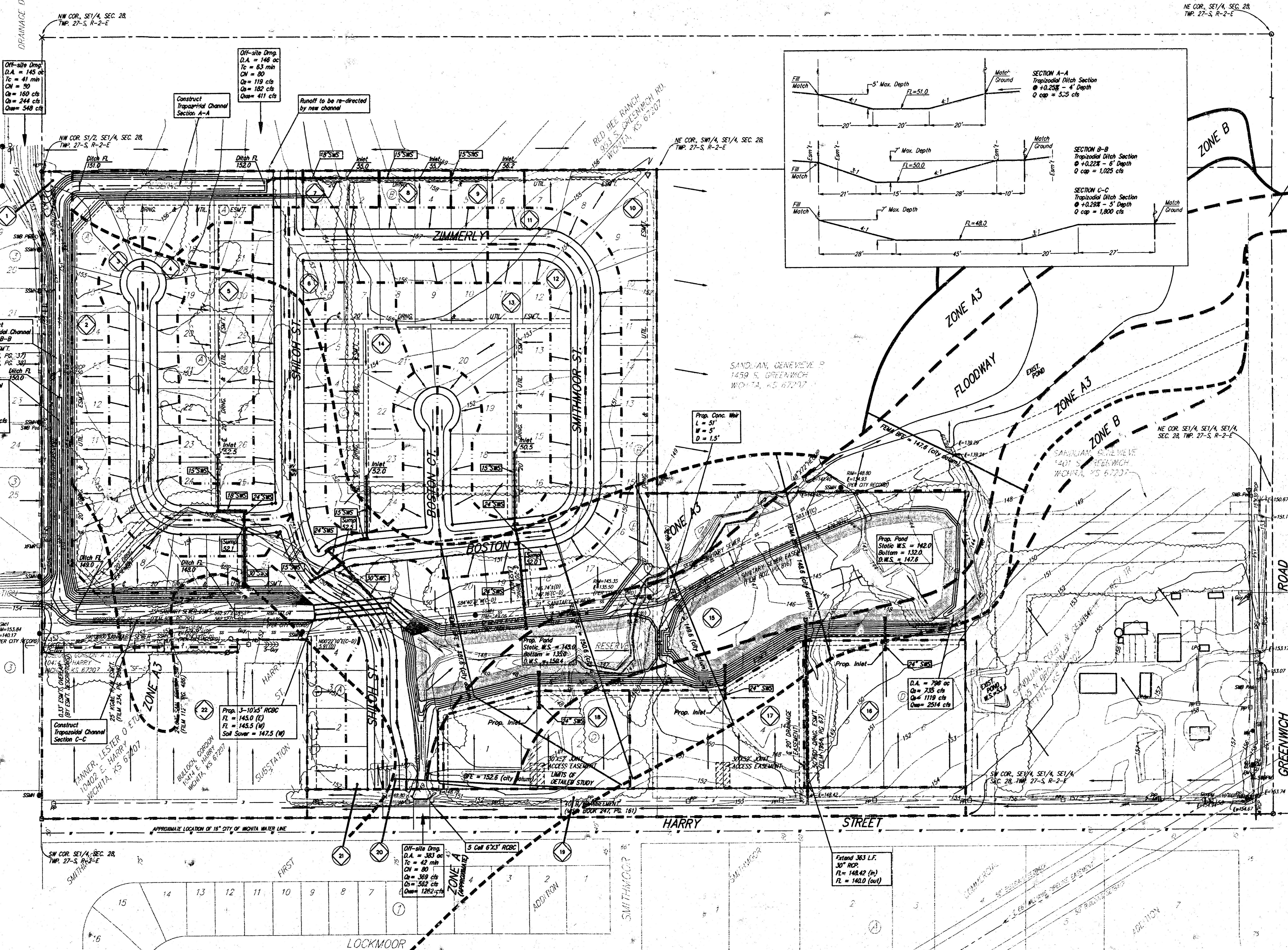


DRAINAGE PLAN CRYSTAL CREEK ADDITION WICHITA, SEDGWICK COUNTY, KANSAS

Crystal Creek Addition - Rational Method - Q = cfs - tc = 15 min.

Basin	Area	C ₁	C ₂	C ₃	Q ₁ (cfs)	Q ₂ (cfs)	Q ₃ (cfs)
1	3.55	0.46	0.50	0.73	6.3	8.1	19.1
2	3.43	0.46	0.50	0.73	6.0	7.8	18.5
3	1.58	0.46	0.50	0.73	2.7	3.6	9.4
4	2.42	0.46	0.50	0.73	4.3	5.5	13.0
5	1.80	0.46	0.50	0.73	3.3	4.3	10.2
6	3.37	0.46	0.50	0.73	5.9	7.7	18.1
7	0.28	0.46	0.50	0.73	0.5	0.6	1.5
8	0.27	0.46	0.50	0.73	0.5	0.6	1.5
9	0.28	0.46	0.50	0.73	0.5	0.6	1.5
10	1.67	0.46	0.50	0.73	2.9	3.8	9.0
11	2.01	0.46	0.50	0.73	3.5	4.6	10.8
12	2.00	0.46	0.50	0.73	3.5	4.6	10.8
13	2.36	0.46	0.50	0.73	4.2	5.4	12.8
14	1.87	0.46	0.50	0.73	3.3	4.3	10.1
15	9.47	0.46	0.50	0.73	16.7	21.6	50.9
16	2.40	0.67	0.70	0.83	6.2	7.7	14.7
17	1.91	0.67	0.70	0.83	4.9	6.1	11.7
18	1.72	0.67	0.70	0.83	4.4	5.5	10.5
19	1.95	0.46	0.50	0.73	3.1	4.4	10.5
20	0.64	0.46	0.50	0.73	1.1	1.5	3.4
21	0.82	0.46	0.50	0.73	1.4	1.9	4.4
22	4.88	0.46	0.50	0.73	8.2	10.7	25.2



DATE OF PREPARATION: APRIL 28, 2003
 BENCHMARK: CO#4 Benchmark 400' north of Harry on Todd Street, northeast corner of RCBC.
 DATUM: 1928 City Datum (1341.64 NGVD29)

MINIMUM BUILDING PAD ELEVATIONS FOR LOWEST ORIGIN TO THE STRUCTURES

LOT	BLOCK	ELEVATION CITY DATUM
1-5	A	156.0
11-16	A	156.0
24,25	A	157.0
14-21	B	152.0
1-5	D	155.0

- #4 REBAR W/ 'BAUGHMAN' CAP (SET)
- 3/4" FINCHED IRON (FOUND)
- 1" FINCHED IRON (FOUND)
- 1 1/2" IRON IN THIMBLE (FOUND)
- #5 REBAR W/ 'MUNICIPAL ENG.' CAP (FOUND)
- CROSS ON FENCE POST FOOTING (FOUND)
- 3/4" IRON W/ 'BAUGHMAN' CAP (SET)
- IN SW COR. OF CONC. FENCE POST FOOTING