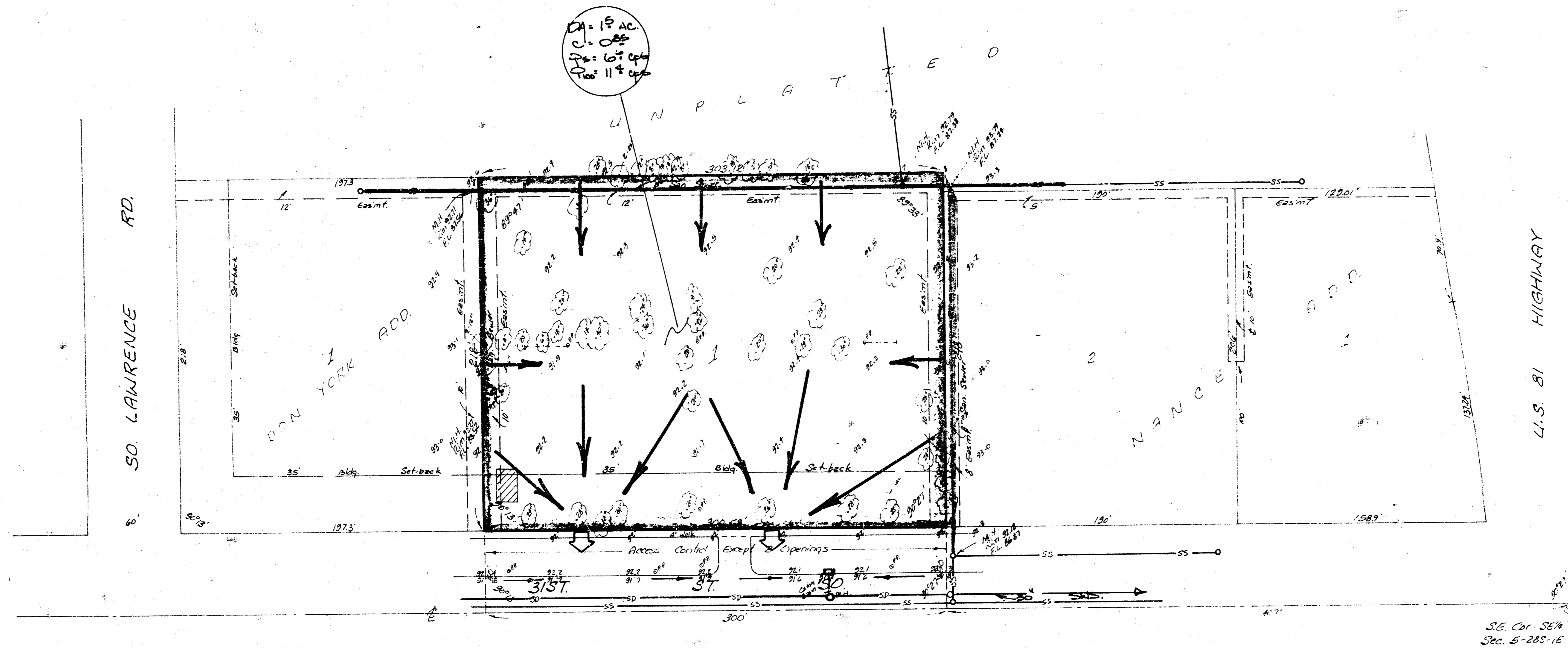
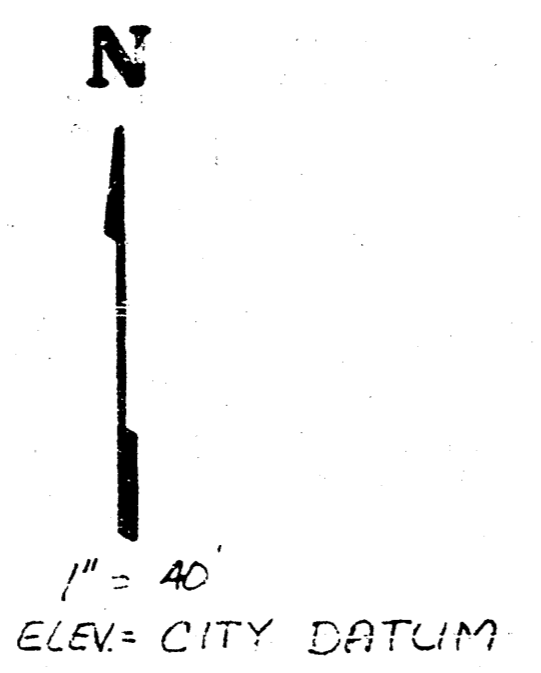


DANIEL F. ADDITION
(Drainage)



BENCH MARK:
 City Standard Disc 43.7' W. E.
 45' N. of E. of Broadway E.
 31st. St. So.
 Elev. = 93.301



SKETCH PLAT
DANIEL F. ADDITION

TRACT IN THE S.E. 1/4 OF SEC. 5, TWP. 28-S, R-1-E
 SEDGWICK COUNTY, KANSAS.

GOLD EAGLE INVESTMENTS
 DANIEL F. HAUSERMAN, PRESIDENT

DRAINAGE PLAN

NOTE-
 THE LOT WILL BE DEVELOPED FOR COMMERCIAL USAGE.
 RULOFF WILL BE 0.05 FOR THE LOT.
 STORM WATER RULOFF FROM THE LOT WILL DISCHARGE
 TO THE STREET THRU EITHER TWO DRAINS OR A
 DRAIN AND A FLUME. THE FLUME WILL BE CONDUIT
 INTO THE EXISTING ALLEY IN THE STREET IF AVAILABLE.
 AN EXISTING 30" SWS IS PRESENTLY IN 31ST. ST.
 AND DRAINS EAST TO BROADWAY.

BAUGHMAN COMPANY, P.A.
 SURVEYING & ENGINEERING
 316-262-7271 • 330 LAURA • WICHITA, KANSAS 67211

FILMED FROM THE BEST
 AVAILABLE COPY.....