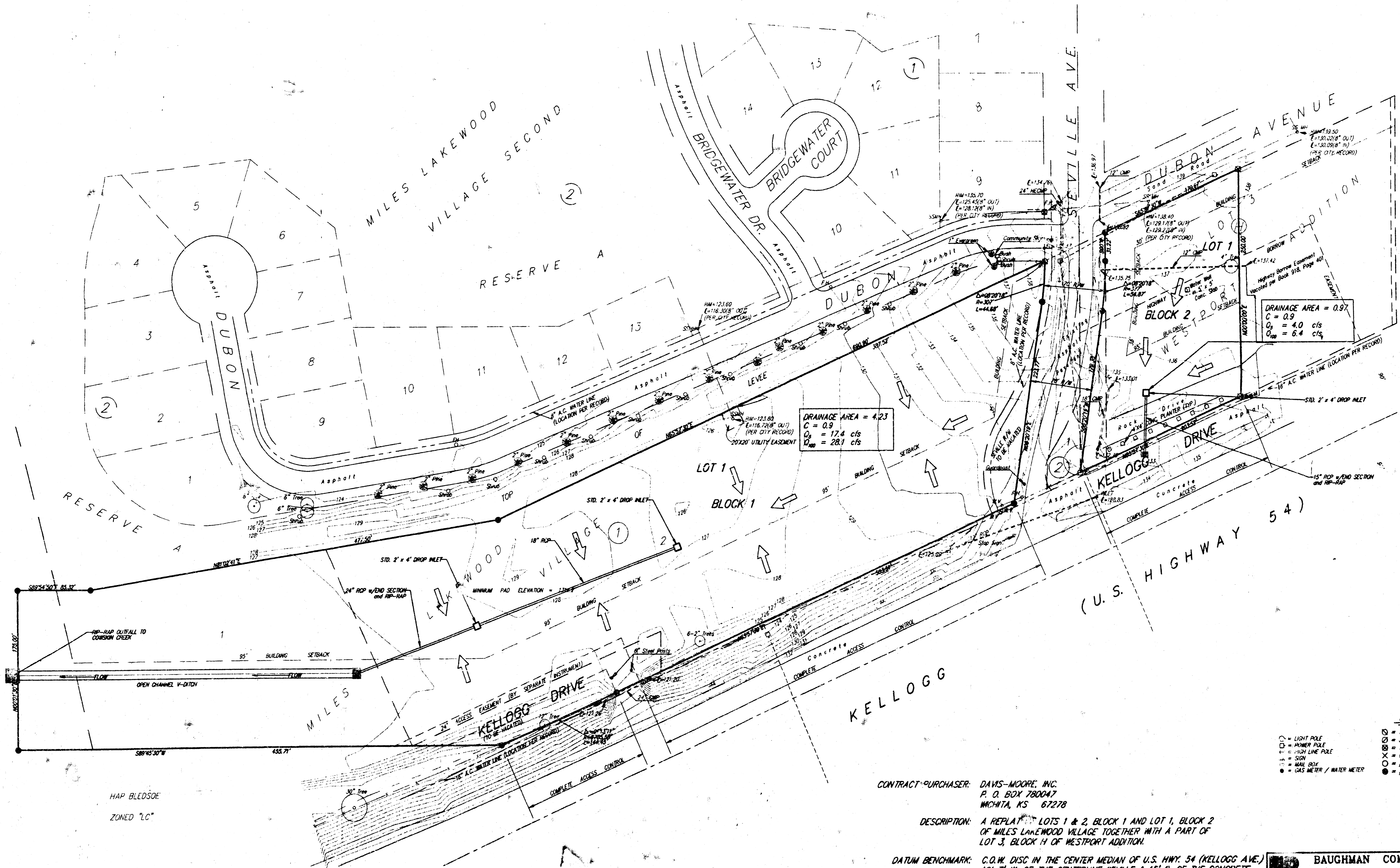


DRAINAGE PLAN

DAVIS MOORE 12TH ADDITION

WICHITA, SEDGWICK COUNTY, KANSAS



HAP BLEDSE
ZONED "LC"

CONTRACT PURCHASER: DAVIS-MOORE, INC.
P. O. BOX 780047
WICHITA, KS 67278

DESCRIPTION: A REPLAT OF LOTS 1 & 2, BLOCK 1 AND LOT 1, BLOCK 2 OF MILES LAKEWOOD VILLAGE TOGETHER WITH A PART OF LOT 3, BLOCK 14 OF WESTPORT ADDITION.

DATUM BENCHMARK: C.O.M. DISC IN THE CENTER MEDIAN OF U.S. HWY. 54 (KELLOGG AVE.)
126.7' W. OF THE CENTERLINE SEVILLE & 15' S. OF THE CONCRETE

SCALE: 1" = 50'

- LEGEND**
- = LIGHT POLE
 - = 1/2" IRON FOUND
 - ⊗ = 3/4" IRON FOUND
 - ⊕ = 1" IRON FOUND
 - ⊙ = 60# NAIL (BENT) FOUND
 - ⊘ = #4 REBAR FOUND
 - = #4 BAUGHMAN REBAR SET
 - = CAS METER / WATER METER
 - = SIGN
 - = 15" LINE POLE
 - = 18" LINE POLE
 - = 24" LINE POLE
 - = 30" LINE POLE
 - = 36" LINE POLE
 - = 42" LINE POLE
 - = 48" LINE POLE
 - = 54" LINE POLE
 - = 60" LINE POLE
 - = 66" LINE POLE
 - = 72" LINE POLE
 - = 78" LINE POLE
 - = 84" LINE POLE
 - = 90" LINE POLE
 - = 96" LINE POLE
 - = 102" LINE POLE
 - = 108" LINE POLE
 - = 114" LINE POLE
 - = 120" LINE POLE

February 13, 1995
BAUGHMAN COMPANY P. A.
ENGINEERING & SURVEYING