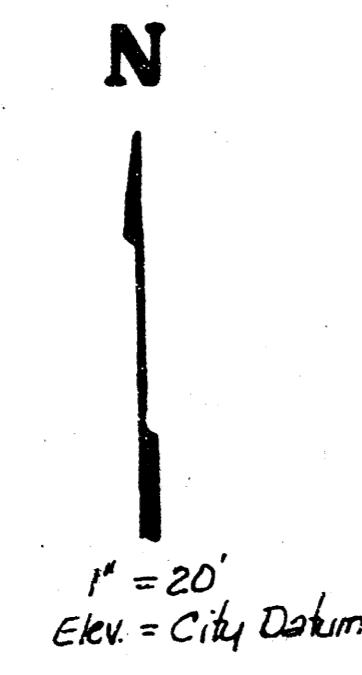
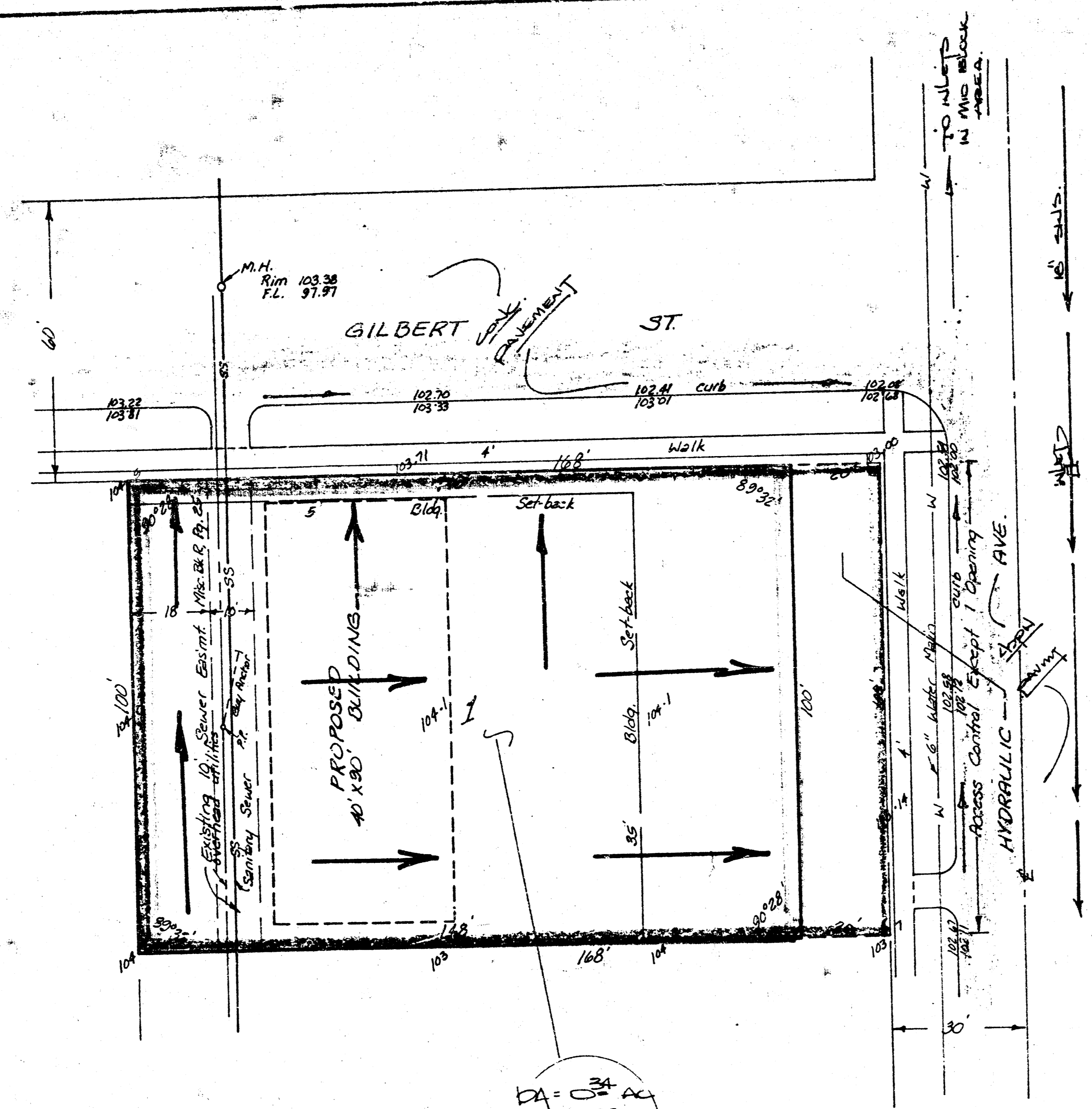


drainage plan



BENCH MARK:
Top of curb N. side of
Indianapolis St. 50' W.
of the W. line of Hydraulic
Elev. = 108.17 City Datum



SKETCH PLAT
DAY ADDITION

LOTS 1, 2, 3 AND 4, SALISBURY
ADDITION TO WICHITA, KANSAS.

GARY DAY

BAUGHMAN COMPANY, P.A.
SURVEYING & ENGINEERING
316-262-7271 • 330 LAURA • WICHITA, KANSAS 67211

8 NOV 83

DAY ADDITION
(DRAINAGE)

BAUGHMAN COMPANY, P.A.
SURVEYING & ENGINEERING
316/262-7271 • 330 LAURA • WICHITA, KANSAS 67211

CONFIRMATION MEMO

PROJECT DAY ADDITION
JOB NO. _____
TO Chris Breitenstein
FROM N. Brent Wooten
REFERENCE Final drainage plan

DATE 11-11-83
COPIES TO: _____

Final plat is scheduled for subdivision for Nov. 21, 1983.
The lot is to be developed as L.C. with a runoff factor of 0.85.
The lot will drain to Gilbert St. and Hydraulic thru either drives
or flumes at the time of development. Gilbert drains east to Hydraulic
which drains north half a block to an inlet and SWS in the east
side of Hydraulic. Runoff files are indicated on the plan.

PAGE ___ OF ___