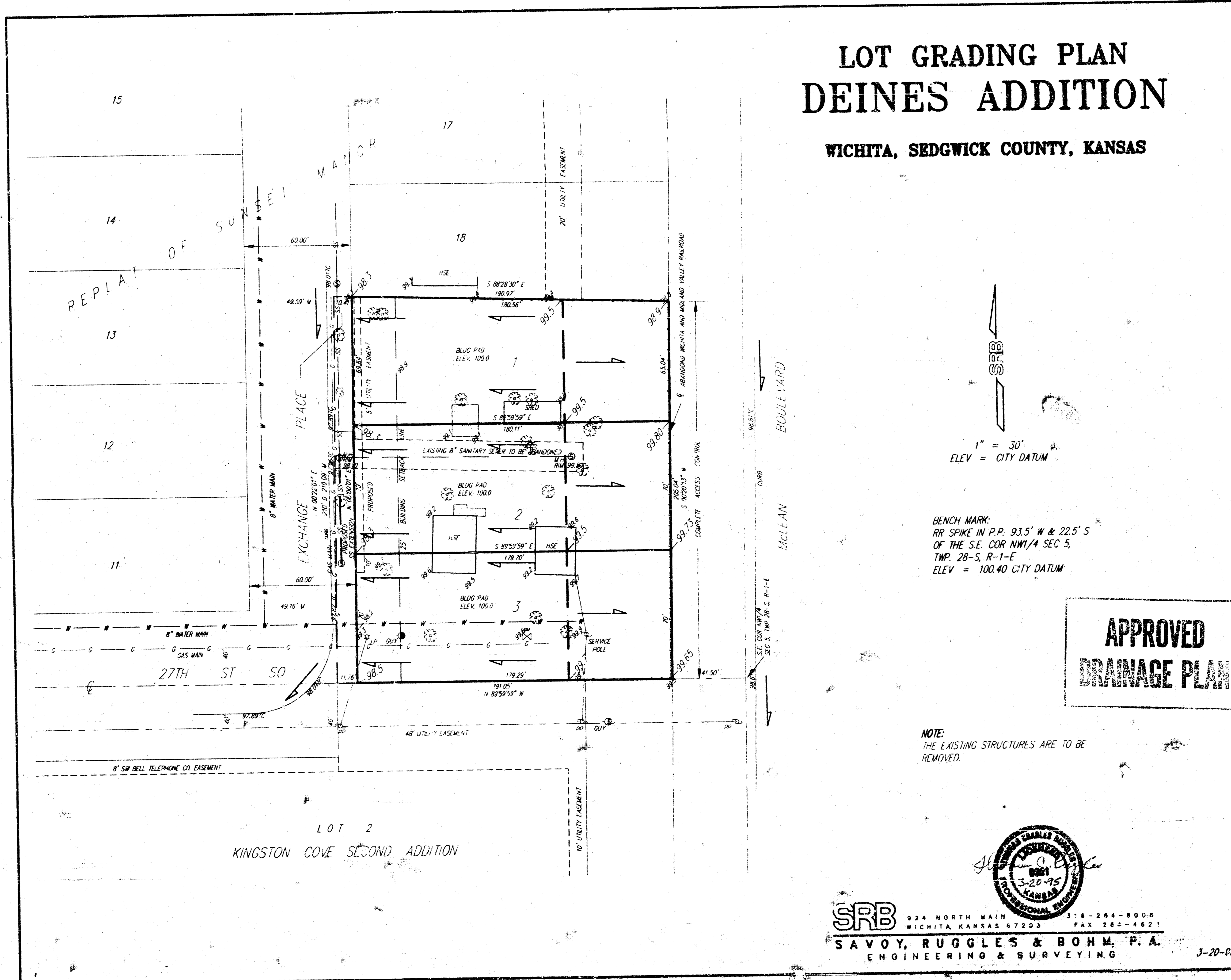


LOT GRADING PLAN DEINES ADDITION

WICHITA, SEDGWICK COUNTY, KANSAS

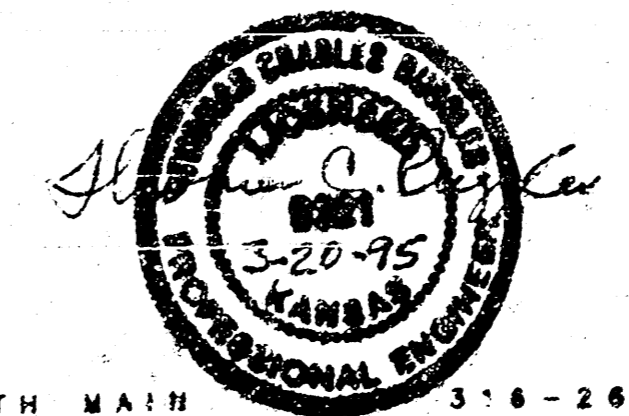


SRB
1" = 30'
ELEV = CITY DATUM

BENCH MARK:
RR SPIKE IN P.P. 93.5' W & 22.5' S
OF THE S.E. COR NW1/4 SEC 5,
TWP. 28-S, R-1-E
ELEV = 100.40 CITY DATUM

**APPROVED
DRAINAGE PLAN**

NOTE:
THE EXISTING STRUCTURES ARE TO BE
REMOVED.



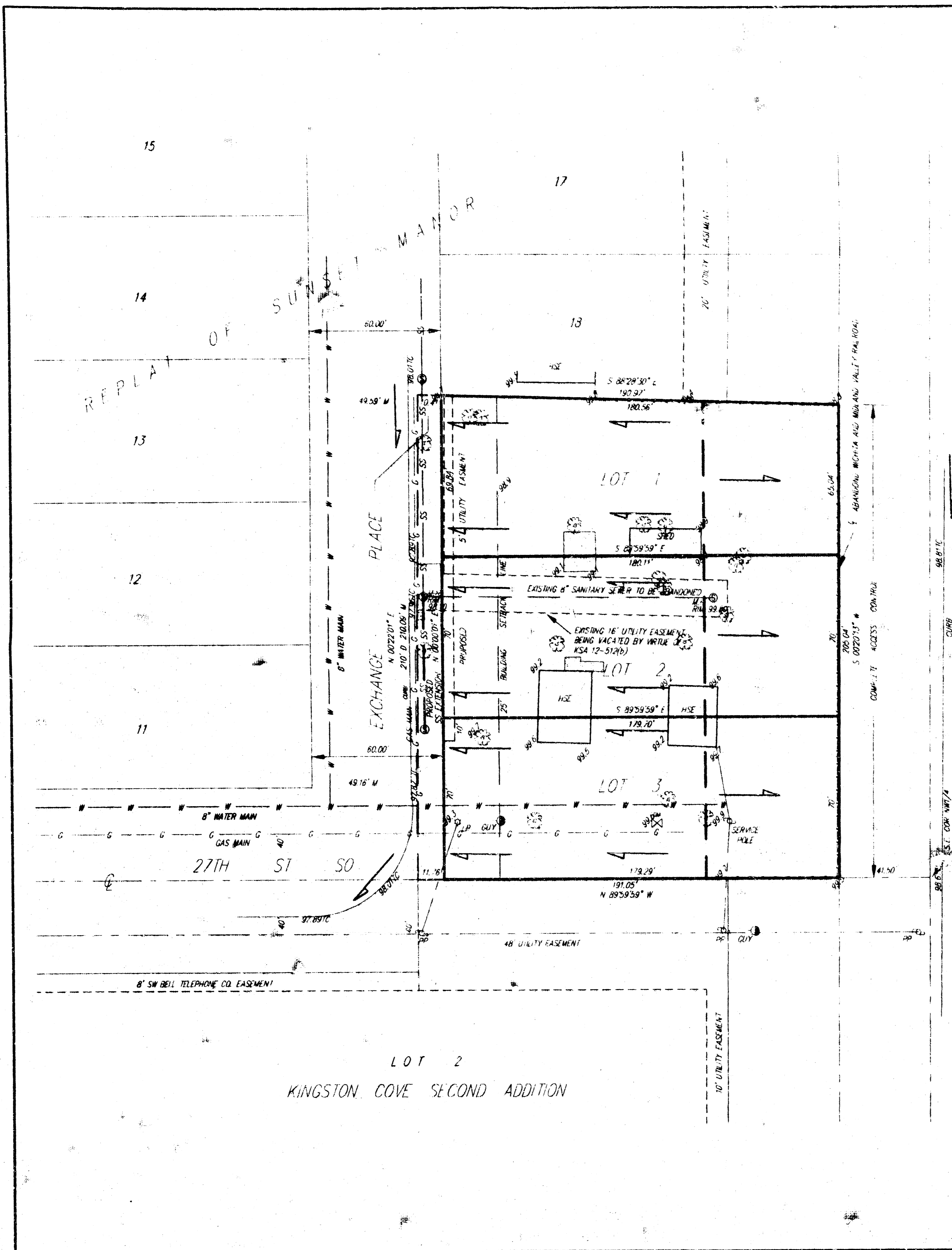
SRB
924 NORTH MAIN
WICHITA, KANSAS 67203
316-264-8006
FAX 264-4621
SAVOY, RUGGLES & BOHM, P. A.
ENGINEERING & SURVEYING

3-20-05

DRAINAGE PLAN DEINES ADDITION

WICHITA, SEDGWICK COUNTY, KANSAS

Beginning 91.5 feet west of the SE Corner of the NW 1/4 of Sec. 5, Twp. 28-S, R-1-E of the 6th P.M., Sedgwick County, Kansas; thence west 141 feet; thence north 210 feet; thence east, 142 feet; thence south, 207 feet to the point of beginning, together with the west half of abandoned Wichita and Maland Aves, 10-foot adjoining on the east.



DRAINAGE CALCULATIONS

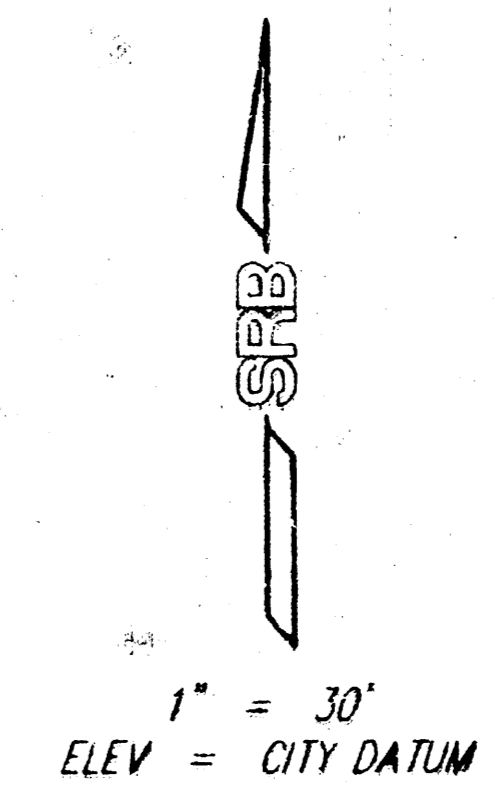
USING RATIONAL FORMULA: $Q = CIA$
(DRAINAGE AREAS AND RUNOFF CHARACTERISTICS ARE TYPICAL FOR ALL THREE LOTS)

SOIL GROUP "B" (U₃)
 $C_p = 0.39$ $C_{100} = 0.57$
Assumed Time of Concentration = 15 min.
 $Q = 3.83$ in/hr $Q_{100} = 7.37$ in/hr

WEST PART:
D.A. = 8400 SF = 0.19 Acre
 $Q_p = 0.3$ cfs $Q_{100} = 0.8$ cfs

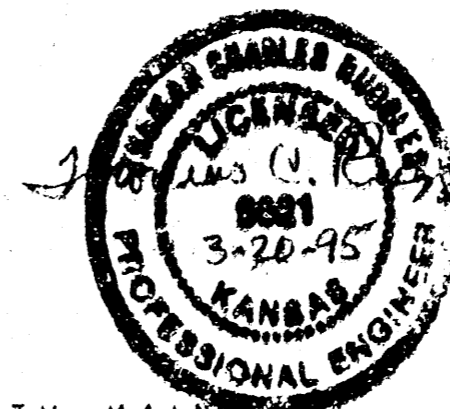
EAST PART:
D.A. = 4200 SF = 0.10 Acre
 $Q_p = 0.2$ cfs $Q_{100} = 0.4$ cfs

NOTE: LOTS WILL DRAIN TO McLEAN AND EXCHANGE PLACE OVER PROPERTY LINES AND THROUGH DRIVEWAYS.



NOTE:
THE EXISTING STRUCTURES ARE TO BE REMOVED.

BENCH MARK:
RR SPIKE IN P.P. 93.5' W & 22.5' S
OF THE S.E. COR NW 1/4 SEC 5,
TWP. 28-S, R-1-E
ELEV = 100.40 CITY DATUM



SRB 924 NORTH MAIN WICHITA, KANSAS 67203 316-264-8000 FAX 264-4621
SAVOY, RUGGLES & BOHM, P.A.
ENGINEERING & SURVEYING

J-20-95