
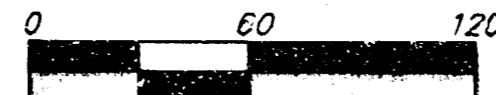


DRAINAGE PLAN DEN ADDITION WICHITA, SEDGWICK COUNTY, KANSAS

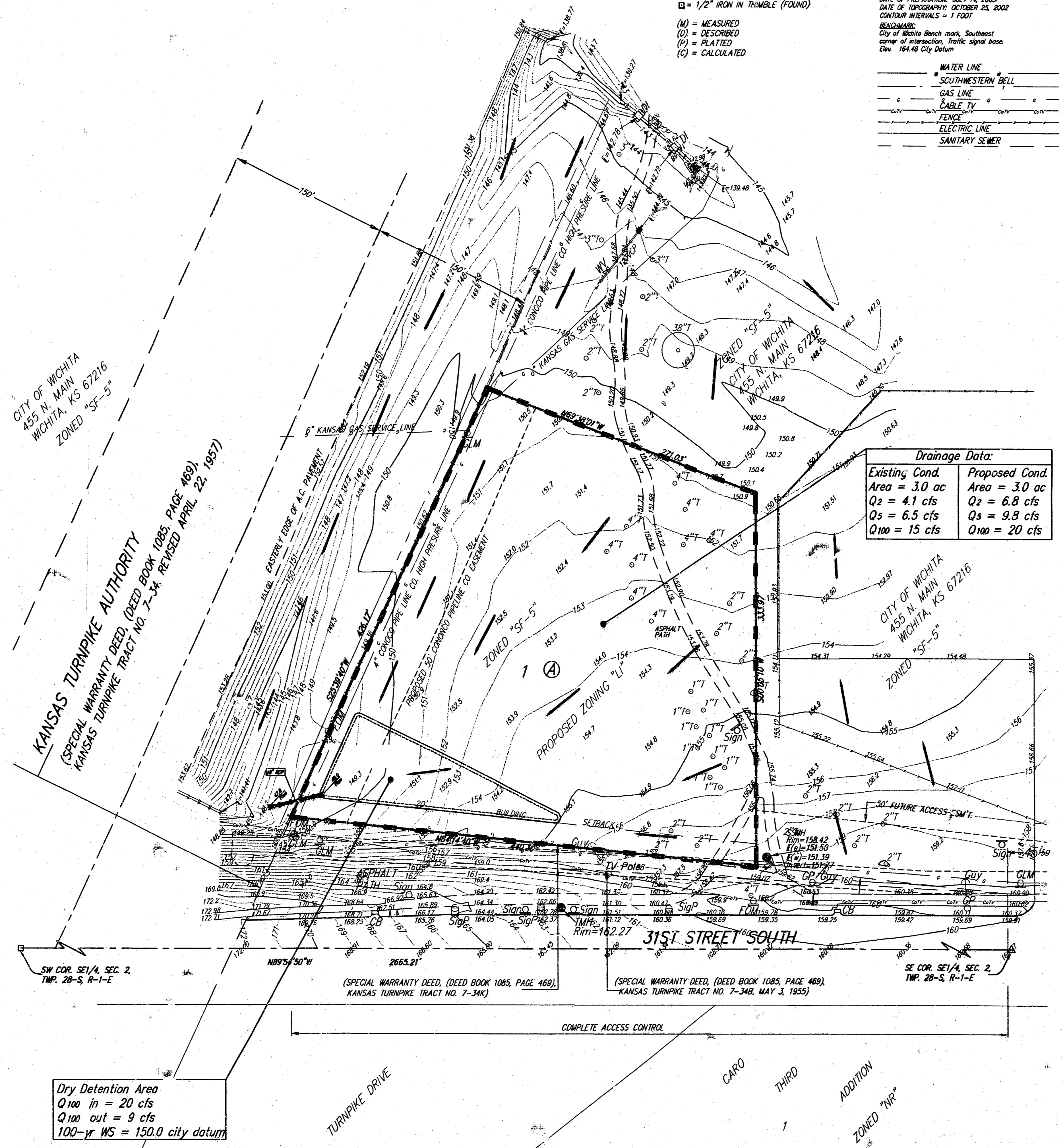
- CB = Catch Basin
- DI = Drop Inlet
- OP = Guy Pole
- OA = Guy Anchor
- FOM = Fiber Optic Line Marker
- GLM = Gasline Marker
- Sign = Signal Pole
- Sign = Sign
- SSMH = Sanitary Sewer Manhole
- TMH = Traffic Manhole
- WV = Water Valve
- W = #4 REBAR W/ "BAUGHMAN" CAP (FOUND)
- W = #4 REBAR W/ "BAUGHMAN" CAP (SET)
- W = #4 REBAR W/ "TILS" CAP (FOUND)
- W = #4 REBAR W/ "TILS" CAP (SET)
- 1" = 1" IRON (FOUND)
- 1" = 1" IRON (TOLUAD)
- 12" = 12" REBAR 12" DEEP (FOUND)
- 12" = 12" IRON IN THIMBLE (FOUND)
- (M) = MEASURED
- (D) = DESCRIBED
- (P) = PLATIED
- (C) = CALCULATED





DATE OF PREPARATION: JULY 14, 2003
 DATE OF TOPOGRAPHY: OCTOBER 25, 2002
 CONTOUR INTERVALS = 1 FOOT
 ELEVATIONS:
 City of Wichita Bench mark, Southeast
 corner of intersection, Traffic signal base.
 Elev. 164.48 City Datum

WATER LINE	
SOUTHWESTERN BELL	
GAS LINE	
CABLE TV	
FENCE	
ELECTRIC LINE	
SANITARY SEWER	



Drainage Data:	
Existing Cond.	Proposed Cond.
Area = 3.0 ac	Area = 3.0 ac
Q2 = 4.1 cfs	Q2 = 6.8 cfs
Q5 = 6.5 cfs	Q5 = 9.8 cfs
Q100 = 15 cfs	Q100 = 20 cfs

Dry Detention Area
 Q_{100 in} = 20 cfs
 Q_{100 out} = 9 cfs
 100-yr WS = 150.0 city datum