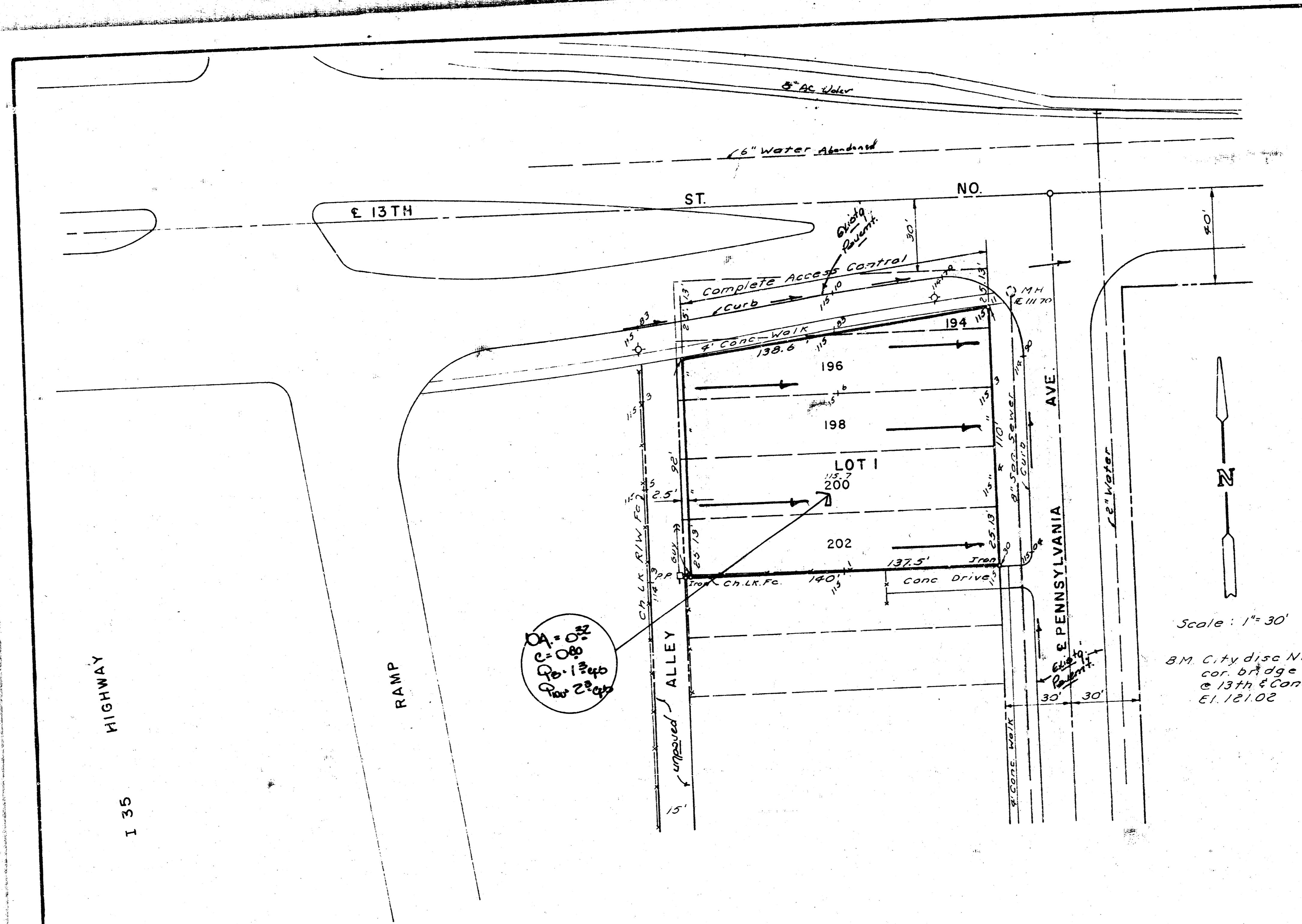


DEPARTMENT OF TRANSPORTATION 1ST ADDITION
(Drainage)



DRAINAGE PLAN

DEPARTMENT OF TRANSPORTATION 1ST ADDITION

A REPLAT OF LOTS 194 THRU 202, GRANVILLE PARK ADD.

General Notes

The lot will drain east to Pennsylvania which drains north to 13th St. Discharge to Pennsylvania will be thru either drive or flumes. No portion of the lot will drain directly to The Valley or to 13th St.

Rev. Dec. 29, 1985
Oct. 24, 1985

BAUGHMAN COMPANY, P.A.
SURVEYING & ENGINEERING
316-282-7271 • 330 LAURA • WICHITA, KANSAS 67211

FILMED FROM THE BEST
AVAILABLE COPY.....