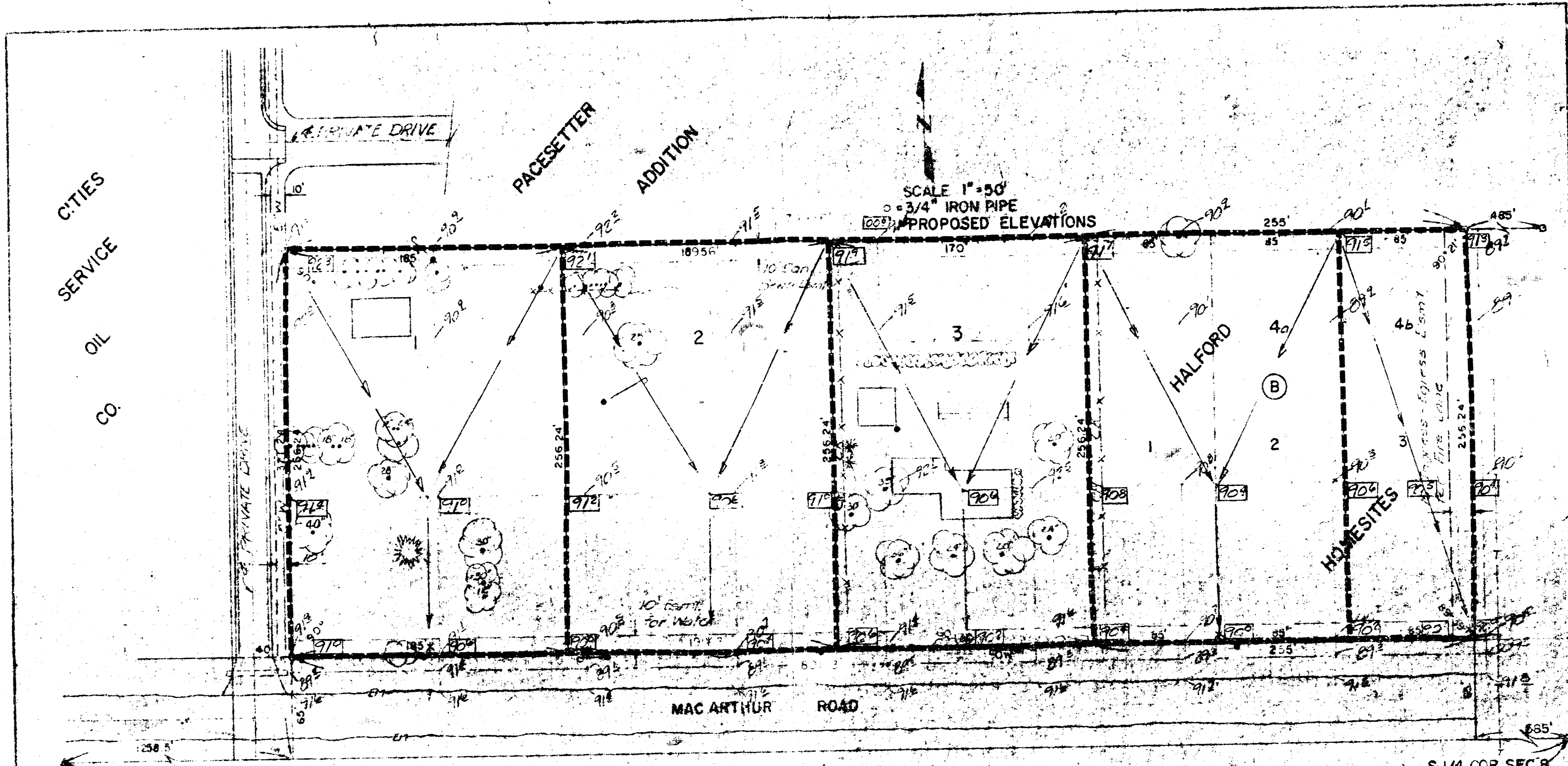


DON ADDITION
(Drainage)



SW COR SEC B
T 28 S, R 1 E, 6 TH PM

2644-63'

S 1/4 COR SEC B
T 28 S, R 1 E, 6 TH PM

FLAT DATA:
No. of Lots: 4
Minimum Size: 43,540 sq ft
SETBACK:
55 ft for commercial zoning

EASEMENTS:
Minimum as shown
ACCESS CONTROL:
Complete access control except 1
(and opening each for the proposed
4 (four) lots.

ZONING:
Existing property to be platted
zone "C" commercial.

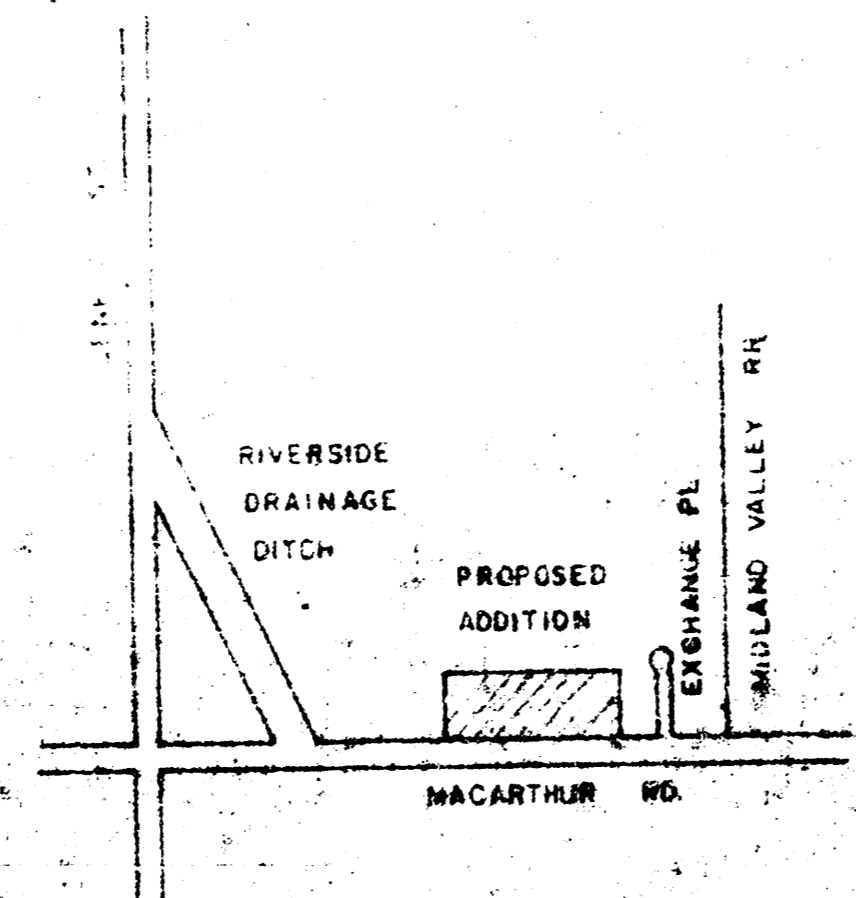
TOPOGRAPHIC SURVEY:
December 9, 1983

BENCH MARK:
City of Wichita: D12 105' N. of 1/2
Sec Line on MacArthur and 36' N. of
S MacArthur # 67.80

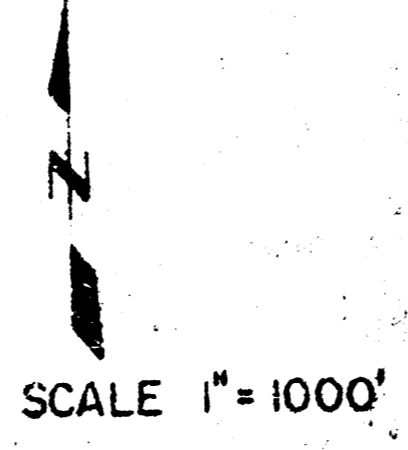
DRAINAGE DATA: (Rational Formula)
1.00" = 5.98 in/hr (Source: Weather Bureau Tech Paper 40)
Tc = 15 min
C = 0.8

Area/Runoff	Lot 1	Lot 2	Lot 3	Lot 4	Lot 5
A	1.0824cfs	1.1154cfs	1.0004cfs	1.0004cfs	0.8004cfs
g100	7.82cfs	8.01cfs	7.17cfs	7.19cfs	5.91cfs

* Note: Runoff shall exit through lot Entrances
--- = Boundaries of Drainage



LOCATION MAP



Rev. A # 28-88	D.C.D.	Approved: 15' Easement for fire lane
MOBILE HOMES RESORT, INC. WICHITA, KANSAS		
DRAINAGE CONCEPT DON ADDITION WICHITA, KANSAS		
CAMPELL & CASTLE ENGINEERS WICHITA, KANSAS	DATE NOVEMBER, 1983	DWG. NO. 8338-C-50,032
SHEET NO. OF		REV.