

DRAINAGE PLAN FOR DOROTHY ADDITION

CITY OF WICHITA, SEDGWICK COUNTY, KANSAS

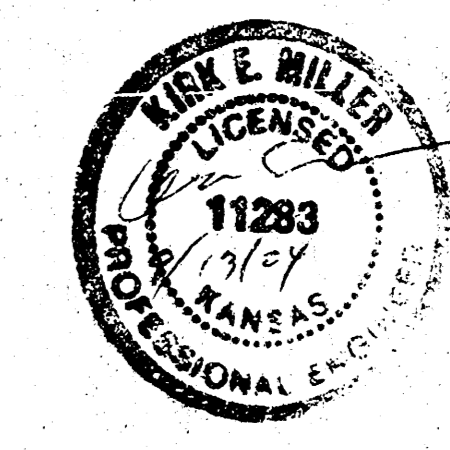
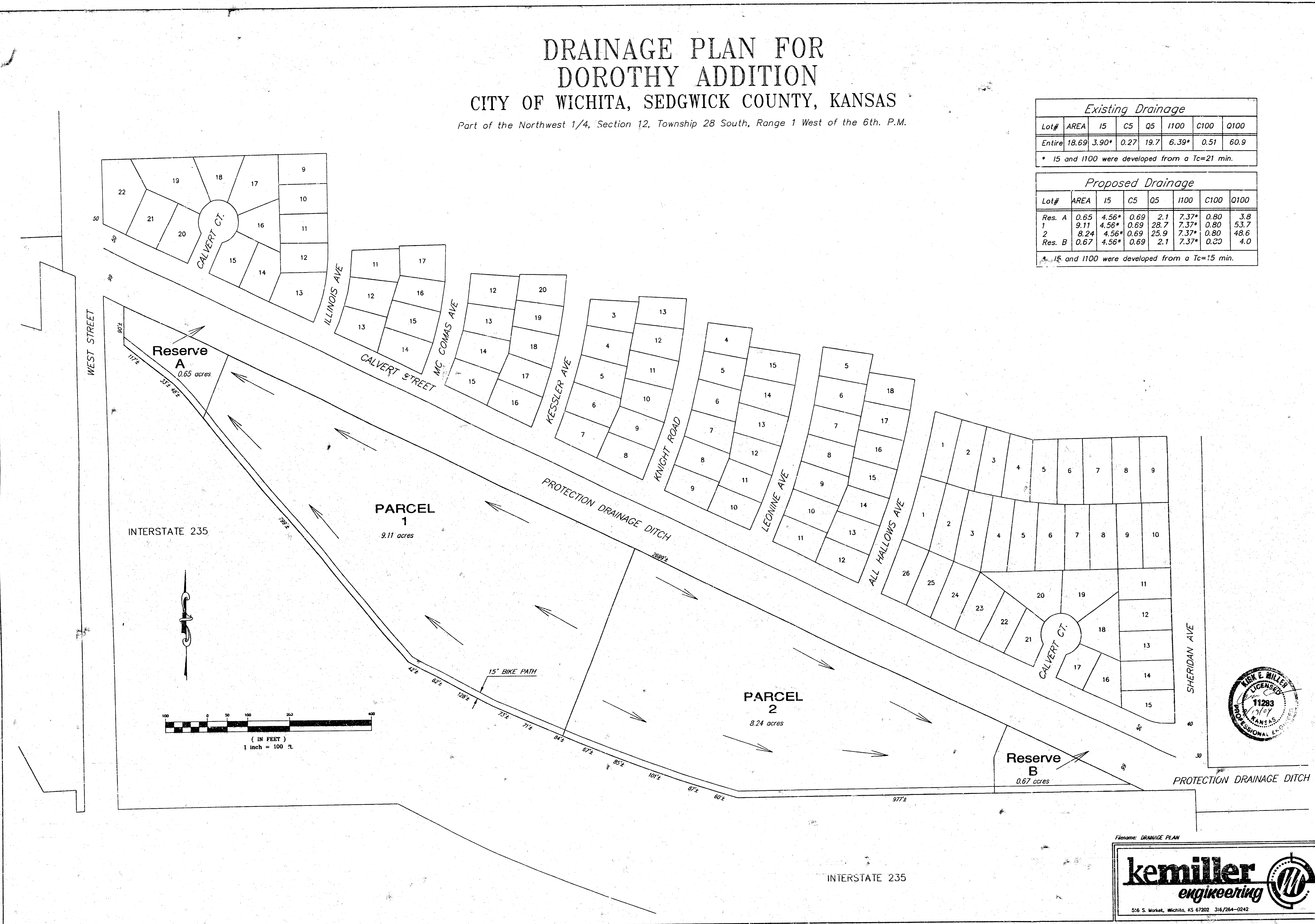
Part of the Northwest 1/4, Section 12, Township 28 South, Range 1 West of the 6th. P.M.

Existing Drainage							
Lot#	AREA	I5	C5	Q5	I100	C100	Q100
Entire	18.69	3.90*	0.27	19.7	6.39*	0.51	60.9

* I5 and I100 were developed from a Tc=21 min.

Proposed Drainage							
Lot#	AREA	I5	C5	Q5	I100	C100	Q100
Res. A	0.65	4.56*	0.69	2.1	7.37*	0.80	3.8
1	9.11	4.56*	0.69	28.7	7.37*	0.80	53.7
2	8.24	4.56*	0.69	25.9	7.37*	0.80	48.6
Res. B	0.67	4.56*	0.69	2.1	7.37*	0.80	4.0

* I5 and I100 were developed from a Tc=15 min.



Filename: DRAINAGE PLAN

516 S. Market, Wichita, KS 67202 316/264-0242