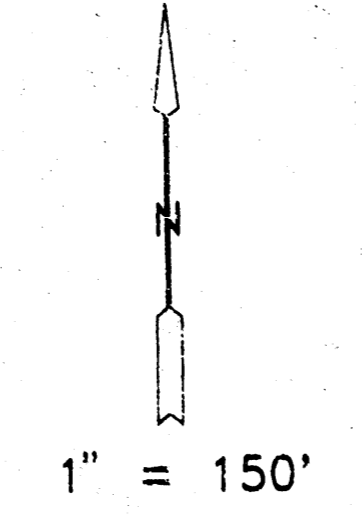
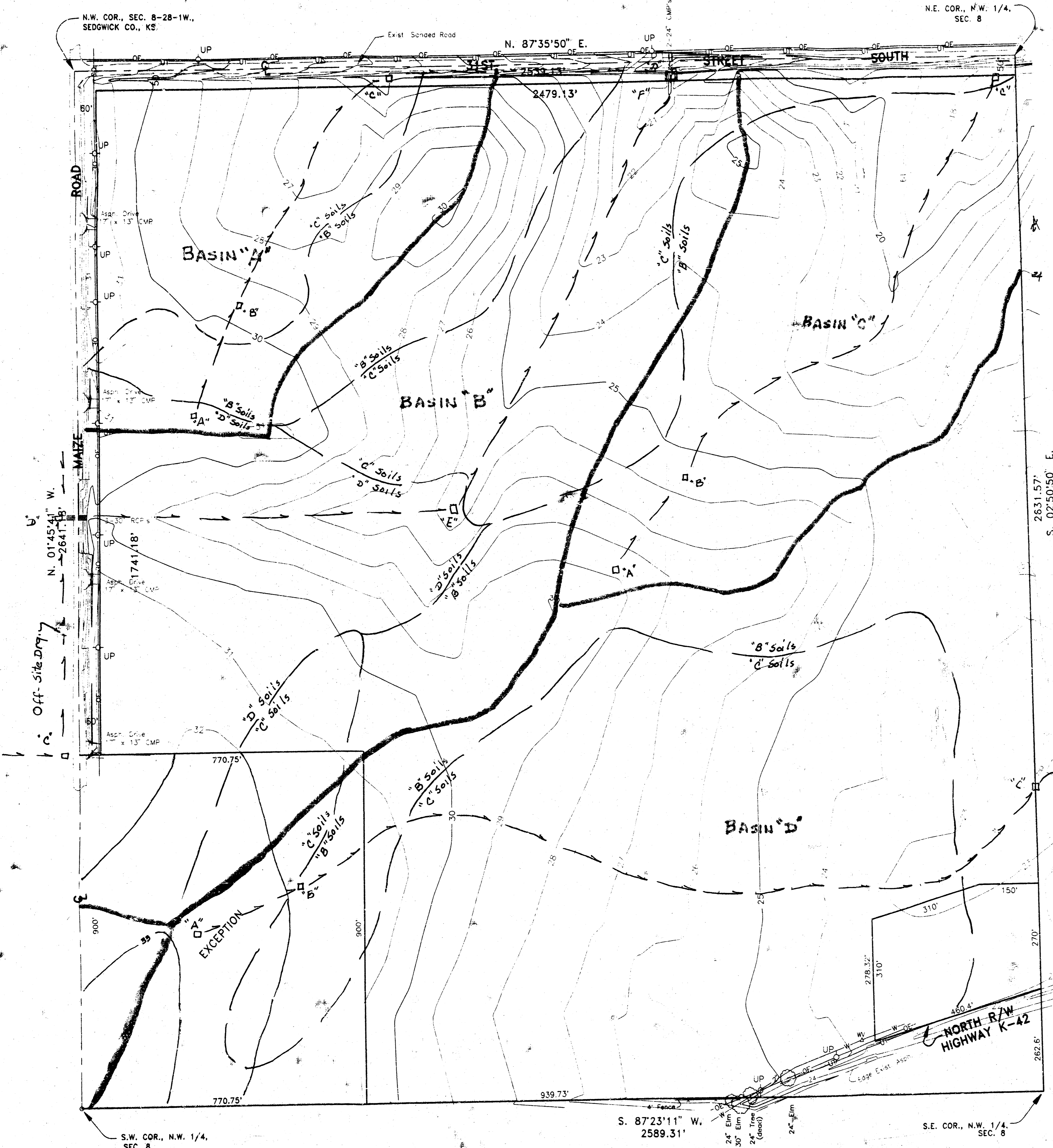


SITE TOPOGRAPHY

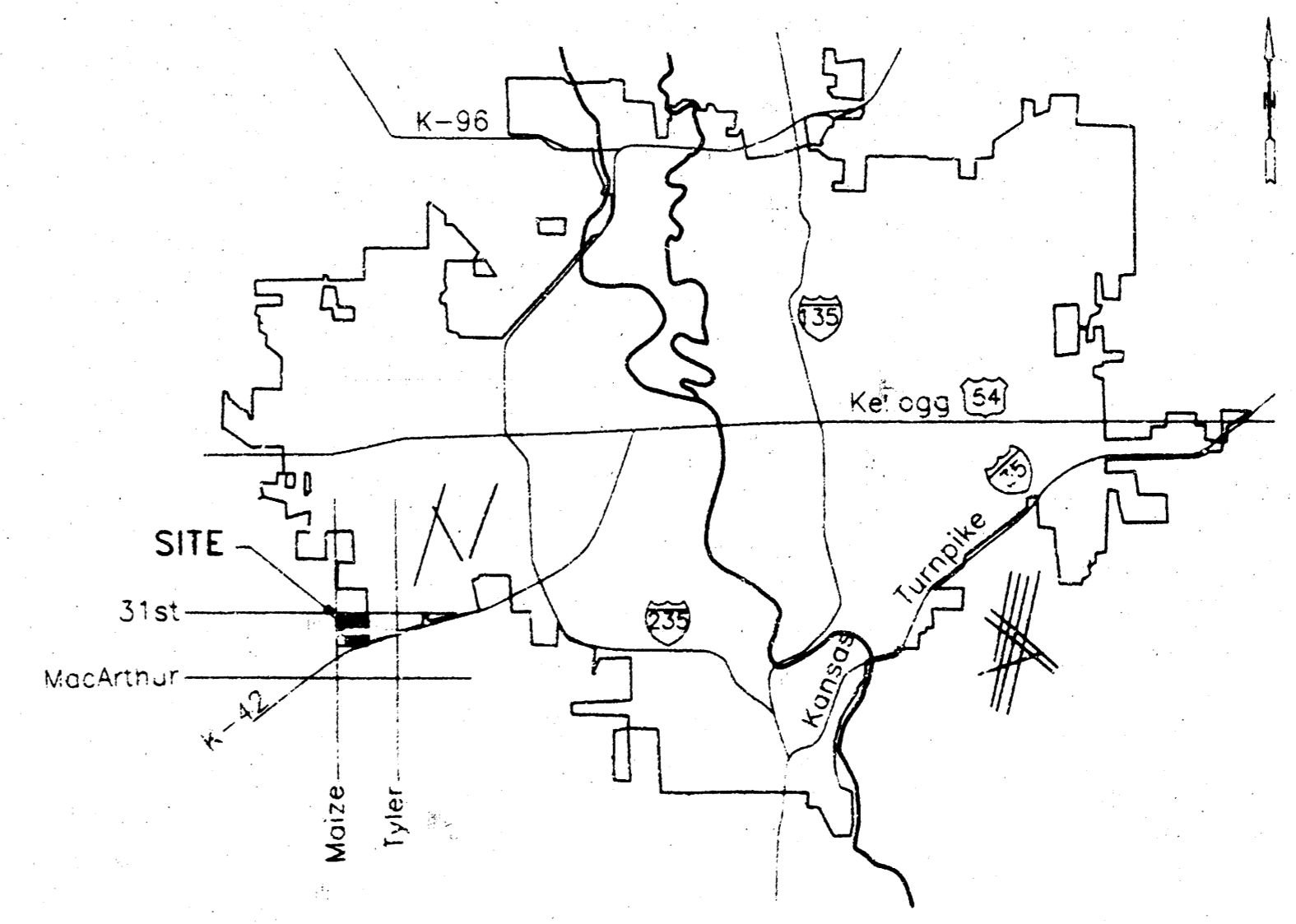
DUGAN INDUSTRIAL PARK
AN ADDITION TO SEDGWICK COUNTY, KANSAS

Pre-Developed



- LEGEND**
- OE = OVERHEAD ELECTRIC
 - UT = UNDERGROUND TELEPHONE
 - UP = UTILITY POLE
 - WV = WATER VALVE
 - = Principal Flow Path
 - = Flow Path Node

PRE-DEVELOPED CONDITIONS



BENCHMARK

1. RR Spike in Hedge Tree, 450' S. of NE Cor., NW 1/4, Sec. 8. Elev = 1325.05 M.S.L.
2. Brass Disk in conc. base, 50' E. and 30' S. of NE Cor., NW 1/4, Sec. 8. Elev = 1317.59 M.S.L.

NOTE: Add 1300.00 to Contour Elevations to Convert to M.S.L.
Date of Topography: June 1996.

MOEHRING & ASSOCIATES
CONSULTING ENGINEERS - SURVEYORS
433 S. HYDRAULIC WICHITA, KS.
(316) 263-8291

Designed and Plotted 8/25/96