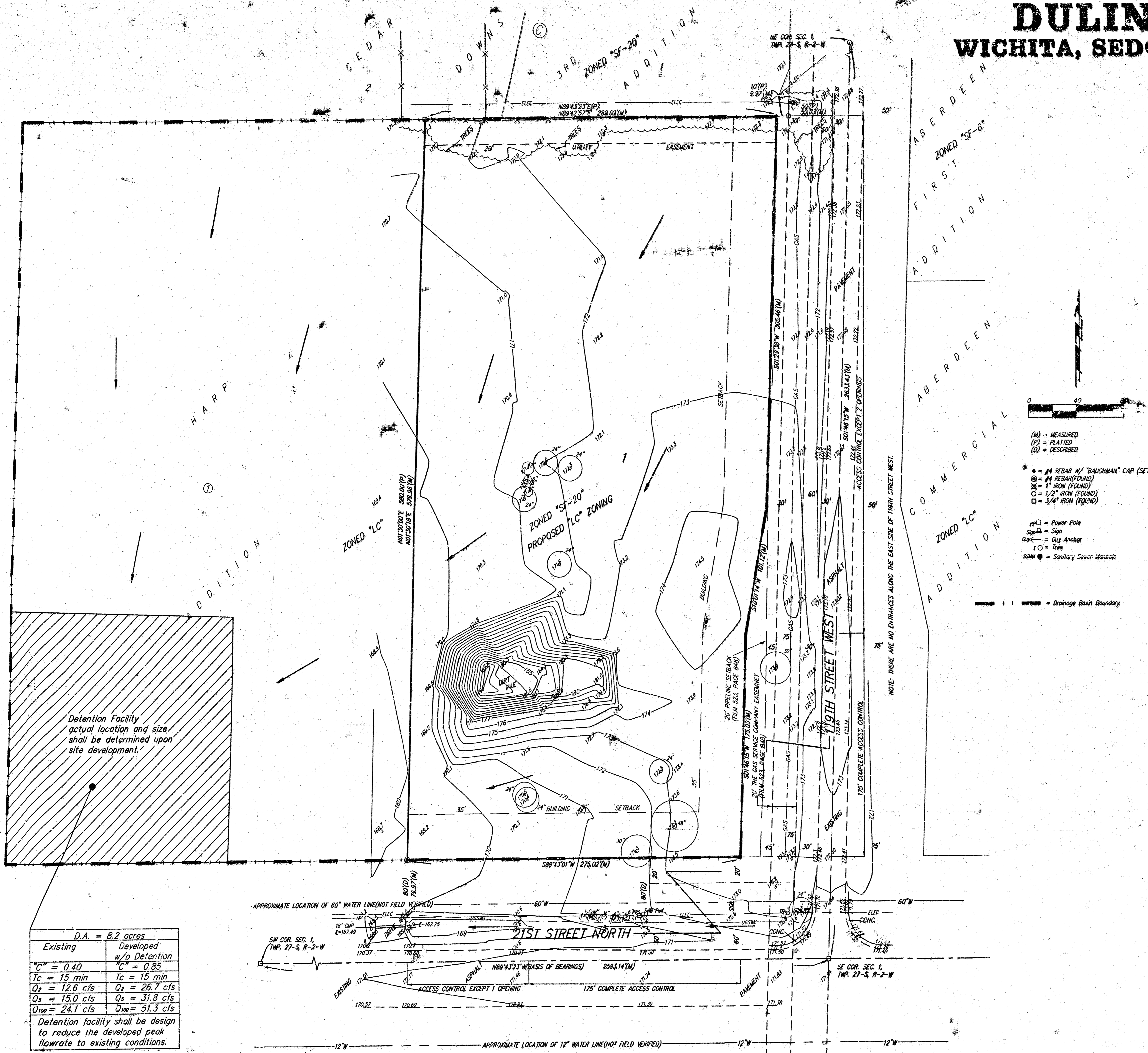
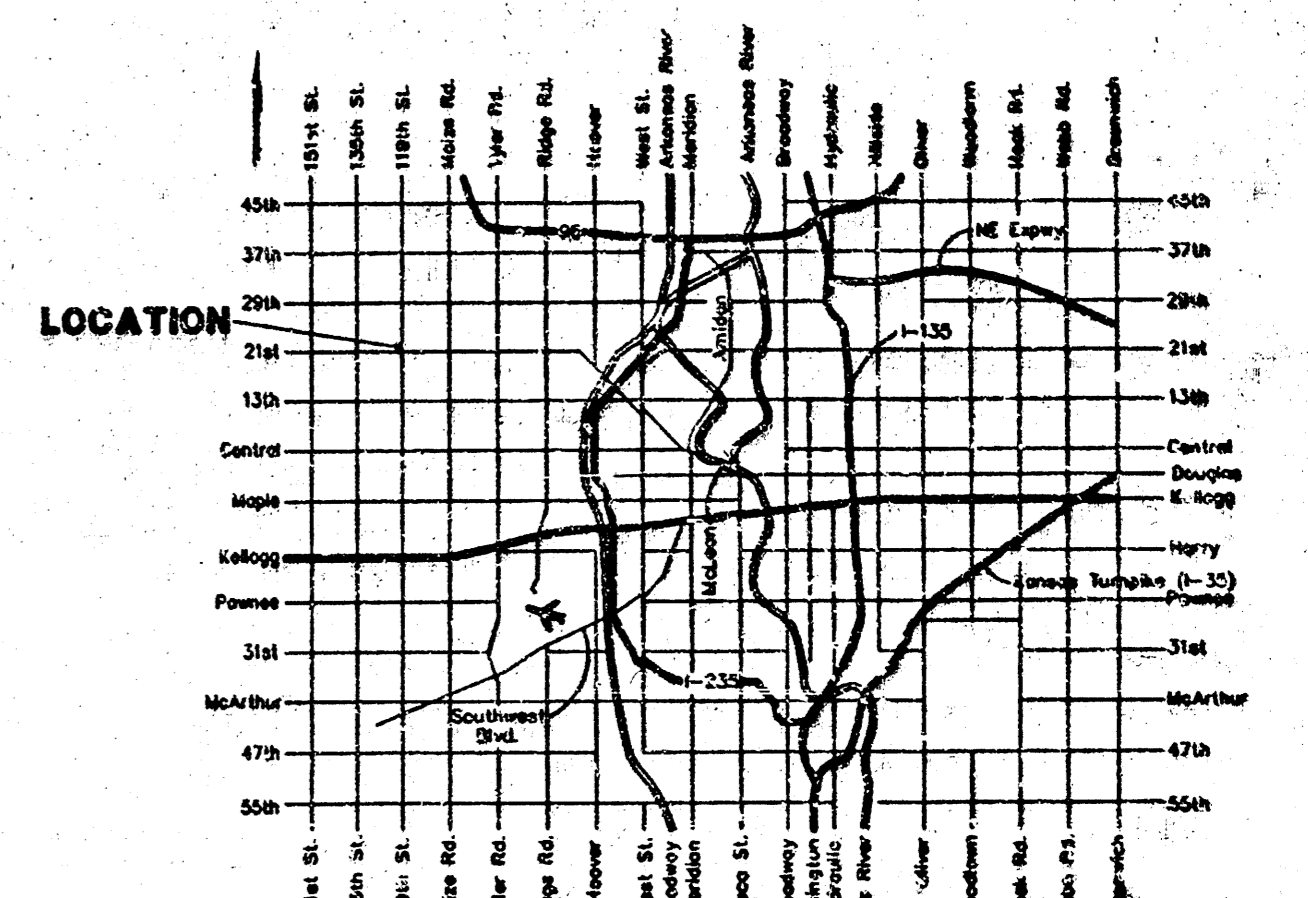


DRAINAGE PLAN DULING ADDITION WICHITA, SEDGWICK COUNTY, KANSAS



- 0 40
- (M) - MEASURED
 - (P) - PLATED
 - (D) - DESCRIBED
 - - #4 REBAR W/ "BAUGHMAN" CAP (SET)
 - ⊙ - #4 REBAR (FOUND)
 - ⊗ - 1" IRON (FOUND)
 - - 1/2" IRON (FOUND)
 - - 3/4" IRON (FOUND)
 - ⊠ - Power Pole
 - ⊡ - Sign
 - ⊙ - Guy Anchor
 - - Tree
 - SSM - Sanitary Sewer Manhole
- | --- = Drainage Basin Boundary

D.A. = 8.2 acres	
Existing	Developed w/o Detention
$C^u = 0.40$	$C^u = 0.85$
$T_c = 15 \text{ min}$	$T_c = 15 \text{ min}$
$Q_s = 12.6 \text{ cfs}$	$Q_s = 26.7 \text{ cfs}$
$Q_u = 15.0 \text{ cfs}$	$Q_u = 31.8 \text{ cfs}$
$Q_{we} = 24.1 \text{ cfs}$	$Q_{we} = 31.3 \text{ cfs}$
Detention facility shall be design to reduce the developed peak flowrate to existing conditions.	



NOTE: The proposed drainage plan provided herein is a generally defined plan to follow for design. It is recognized and assumed that upon the final design of site layout and grading within this plat that the designer will modify or alter the general drainage plan as necessary in order to implement the installation of the improvements to obtain the most economical design and construction possible.

SUNRIDGE ZONED SF-5 ADDITION

TEAL BROOK COMMERCIAL ZONED LC ADDITION

WOODBRIDGE ZONED LC FOURTH ADDITION