

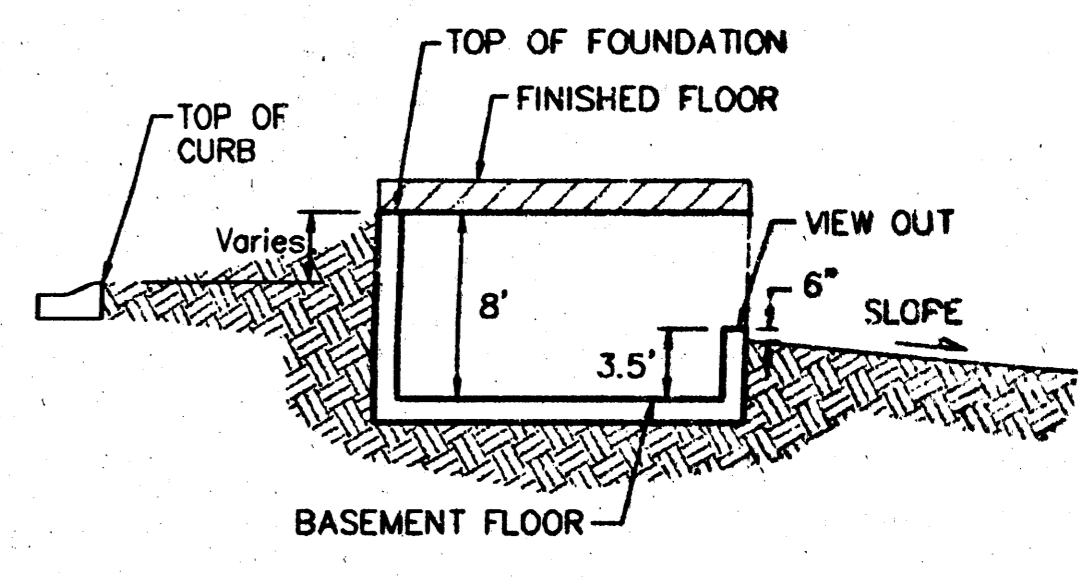


SCALE: 1" = 60'
 • = IRON

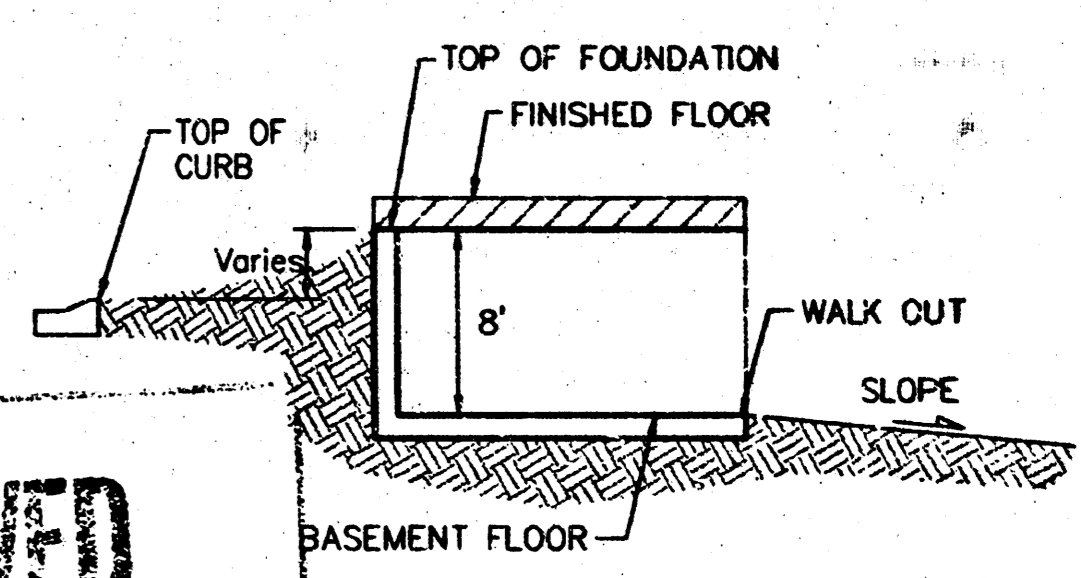
MINIMUM BUILDING PAD ELEVATIONS FOR LOWEST OPENING TO THE STRUCTURES

LOT	BLOCK	ELEVATION	
		CITY DATUM	NGVD
37-39, 41-44	A	205.0	1392.4
28-40, 43-46	C	201.0	1378.4
2	D	207.0	1394.4
3	D	206.0	1393.4
5	D	204.0	1391.4
6	D	203.0	1390.4
7	D	202.5	1389.9
8	D	201.5	1388.9
9	D	201.0	1388.4
10-11	D	200.5	1387.9
12	D	198.0	1385.4
13-17	D	196.5	1383.9
1	E	196.5	1383.9
2	E	200.5	1387.9
3	E	202.5	1389.9
4	E	206.0	1393.4

* EXTRA DEEP FOUNDATION MAY BE REQUIRED



TYPICAL VIEW OUT
 NO SCALE



TYPICAL WALK OUT
 NO SCALE

APPROVED DRAINAGE PLAN

REVISED 11/21/02 BY BOT
 REVISED 10/08/02 BY AEG
 REVISED 2/18/02 BY AEG

EAGLES LANDING AT NORTH OLIVER 2ND
GRADING PLAN
 WICHITA, KANSAS, SEDGWICK COUNTY, KANSAS

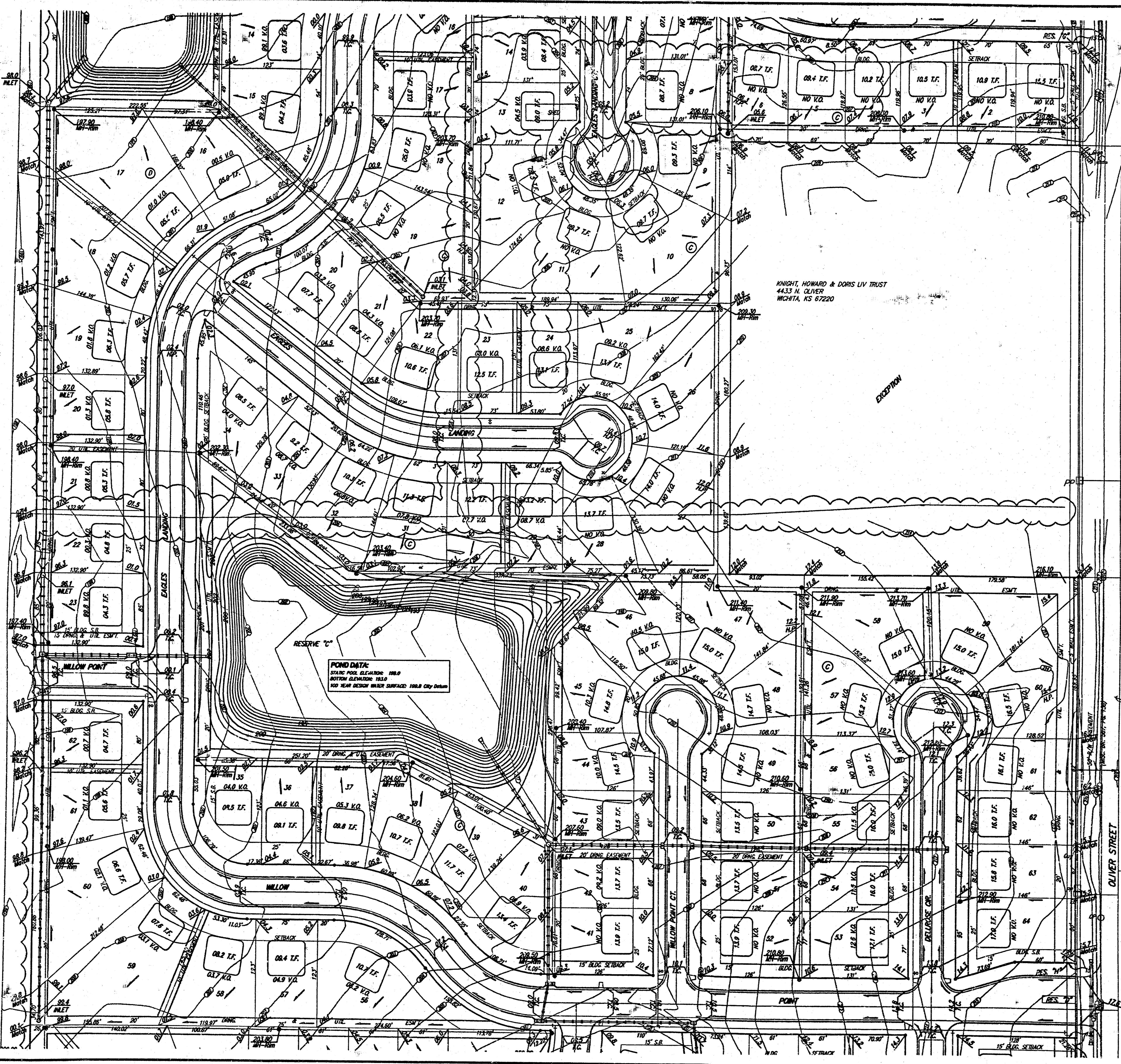
BAUGHMAN COMPANY P.A.
 ENGINEERING, SURVEYING, & PLANNING
 316-282-7271 • 315 E. ILLUS • WICHITA, KANSAS 67211

PROJECT NUMBER: _____ SHEET **1** OF **3**

DESIGN	DRAWN	APPROVED	DATE	SCALE
	JAK		1/4/01	1" = 60'

KOCH INDUSTRIES, INC.
 4520 E. 37TH ST. N.
 WICHITA, KS 67220

KOCH INDUSTRIES, INC.
4401 E. 45TH ST. N.
WICHITA, KS 67220



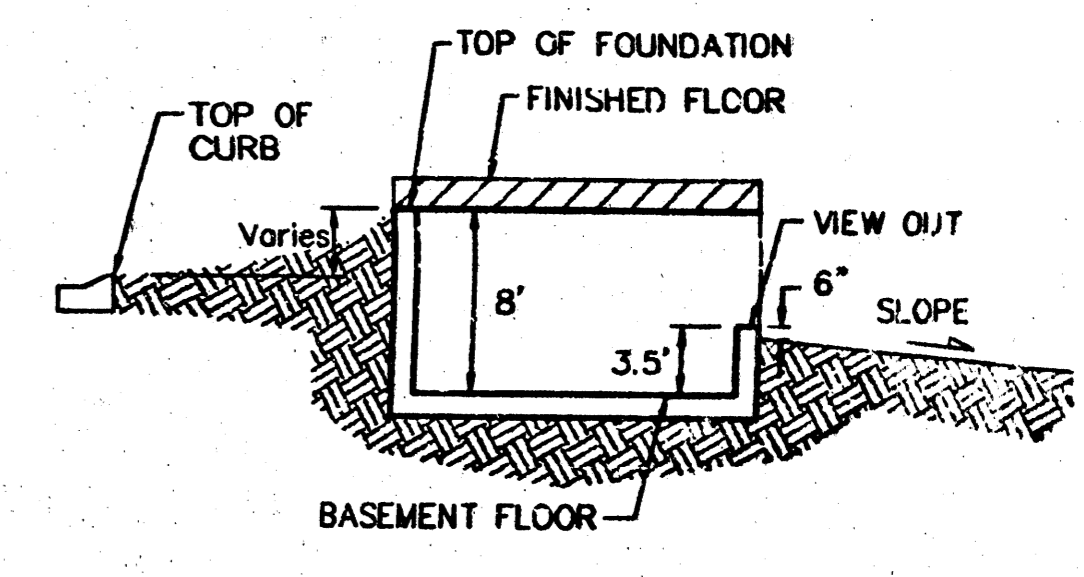
KNIGHT, HOWARD & DORS LIV TRUST
4433 N. OLIVER
WICHITA, KS 67220

POND DATA:
STATION POND ELEVATION: 198.0
BOTTOM ELEVATION: 194.0
100 YEAR DESIGN WIND SURFACE: 198.0 City Datum

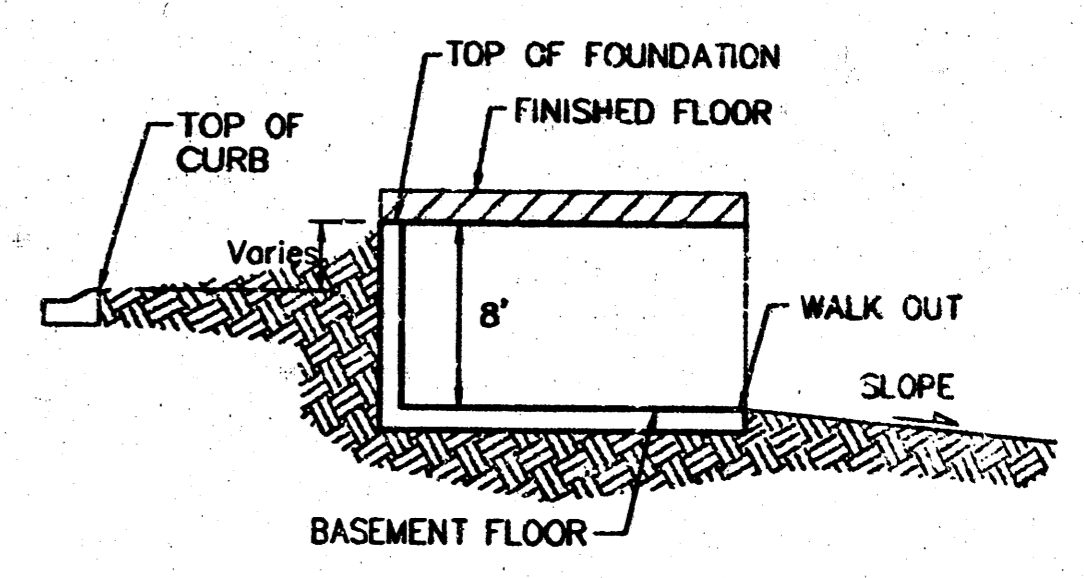
SCALE: 1" = 60'
• = IRON

LOT	BLOCK	ELEVATION	
		CITY DATUM	NGVD
37-39, 41-44	A	205.0	1392.4
28-40, 43-46	C	201.0	1388.4
2	D	207.0	1394.4
3	D	206.0	1393.4
5	D	204.0	1391.4
6	D	203.0	1390.4
7	D	202.5	1389.9
8	D	201.5	1388.9
9	D	201.0	1388.4
10-11	D	200.5	1387.9
12	D	198.0	1385.4
13-17	D	196.5	1383.9
1	E	196.5	1383.9
2	E	200.5	1387.9
3	E	202.5	1389.9
4	E	206.0	1393.4

* EXTRA DEEP FOUNDATION MAY BE REQUIRED



TYPICAL VIEW OUT
NO SCALE



TYPICAL WALK OUT
NO SCALE

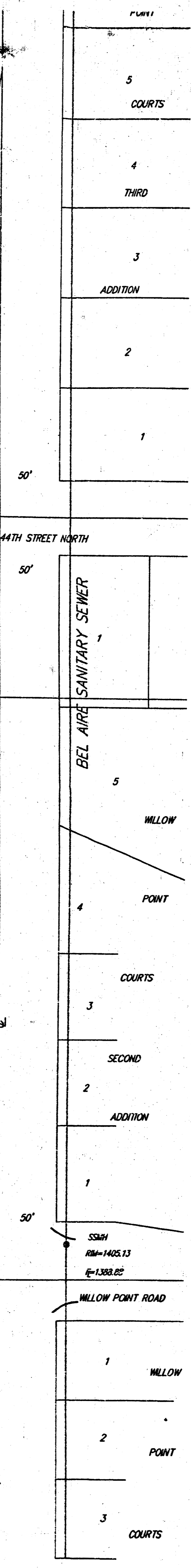
REVISED 10/18/02 BY AEG
REVISED 2/19/02 BY AEG

EAGLES LANDING AT NORTH OLIVER 2ND
GRADING PLAN
WICHITA, KANSAS, SEDGWICK COUNTY, KANSAS

BAUGHMAN COMPANY P.A.
ENGINEERING, SURVEYING, & PLANNING
316-262-7271 • 315 ELLIS • WICHITA, KANSAS 67211

PROJECT NUMBER: _____ SHEET: **2** OF **3**

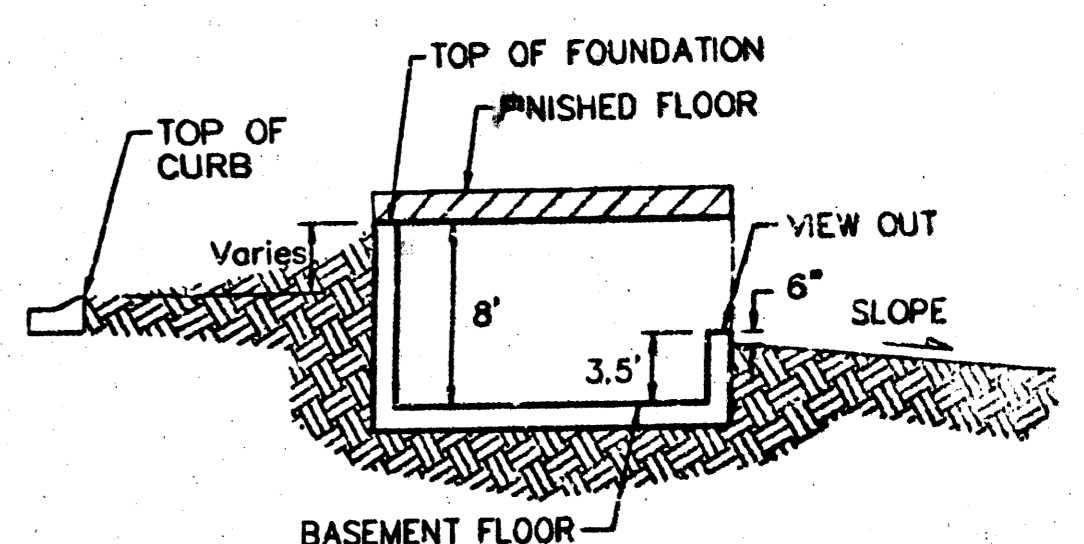
DESIGN	DRAWN	APPROVED	DATE	SCALE
	JAK		1/4/01	1" = 60'



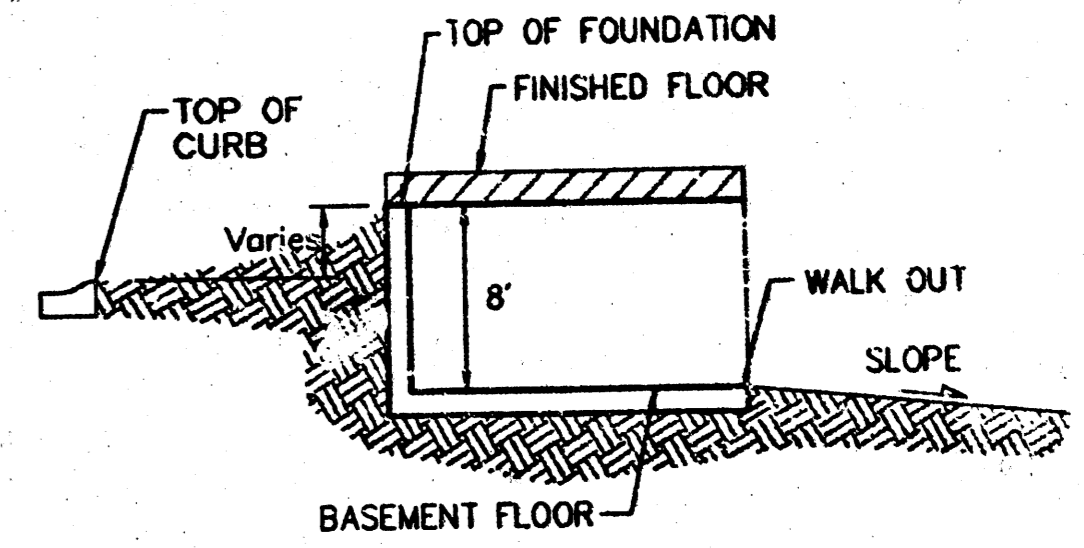
SCALE: 1" = 60'
 • = IRON

MINIMUM BUILDING PAD ELEVATIONS FOR LOWEST OPENING TO THE STRUCTURES				
LOT	BLOCK	ELEVATION		
		CITY DATUM	NGVD	
37-39	41-44	A	205.0	1392.4
28-40	43-46	C	201.0	1388.4
2		D	207.0	1394.4
3		D	206.0	1393.4
5		D	204.0	1391.4
6		D	203.0	1390.4
7		D	202.5	1389.9
8		D	201.5	1388.9
9		D	201.0	1388.4
10-11		D	200.5	1387.9
12		D	198.0	1385.4
13-17		D	196.5	1383.9
1		E	196.5	1383.9
2		E	200.5	1387.9
3		E	202.5	1389.9
4		E	206.0	1393.4

POND DATA:
 STATIC POOL ELEVATION: 183.5 City Datum
 BOTTOM ELEVATION: 185.0 City Datum
 100 YEAR DESIGN WIND SURVIVAL: 194.2 City Datum



TYPICAL VIEW OUT
 NO SCALE



TYPICAL WALK OUT
 NO SCALE

REVISED 10/19/02 BY AEG
 REVISED 2/16/02 BY AEG

EAGLES LANDING AT NORTH OLIVER 2ND
GRADING PLAN
 WICHITA, KANSAS, SEDGWICK COUNTY, KANSAS

BAUGHMAN COMPANY P.A.
 ENGINEERING, SURVEYING, & PLANNING
 318-262-7271 • 318 ELLIS • WICHITA, KANSAS 67211

DESIGN	DRAWN	APPROVED	DATE	SCALE	SHEET
	JAK		1/2/01	1" = 60'	3 OF 3

KOCI INDUSTRIES, INC.
 401 E. 45TH ST. N.
 WICHITA, KS 67220

KNIGHT, HOWARD & DORIS LIV TRUST
 4433 N. OLIVER
 WICHITA, KS 67220

