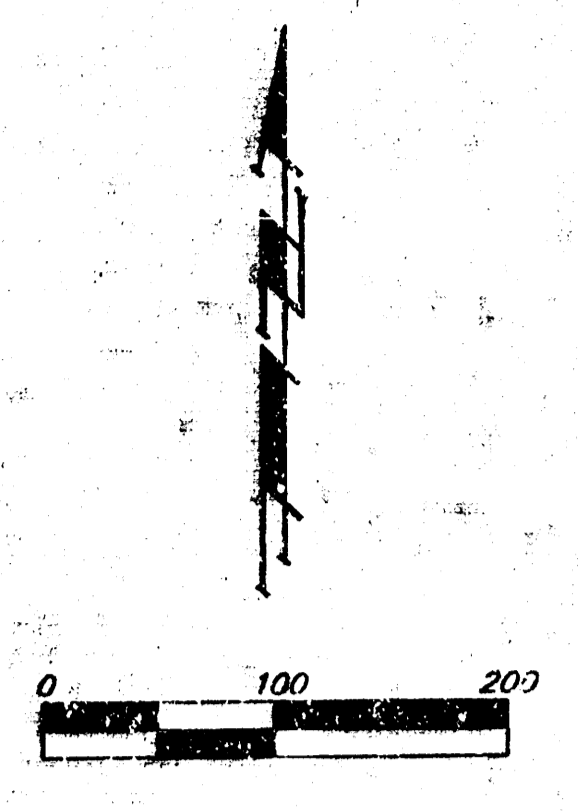
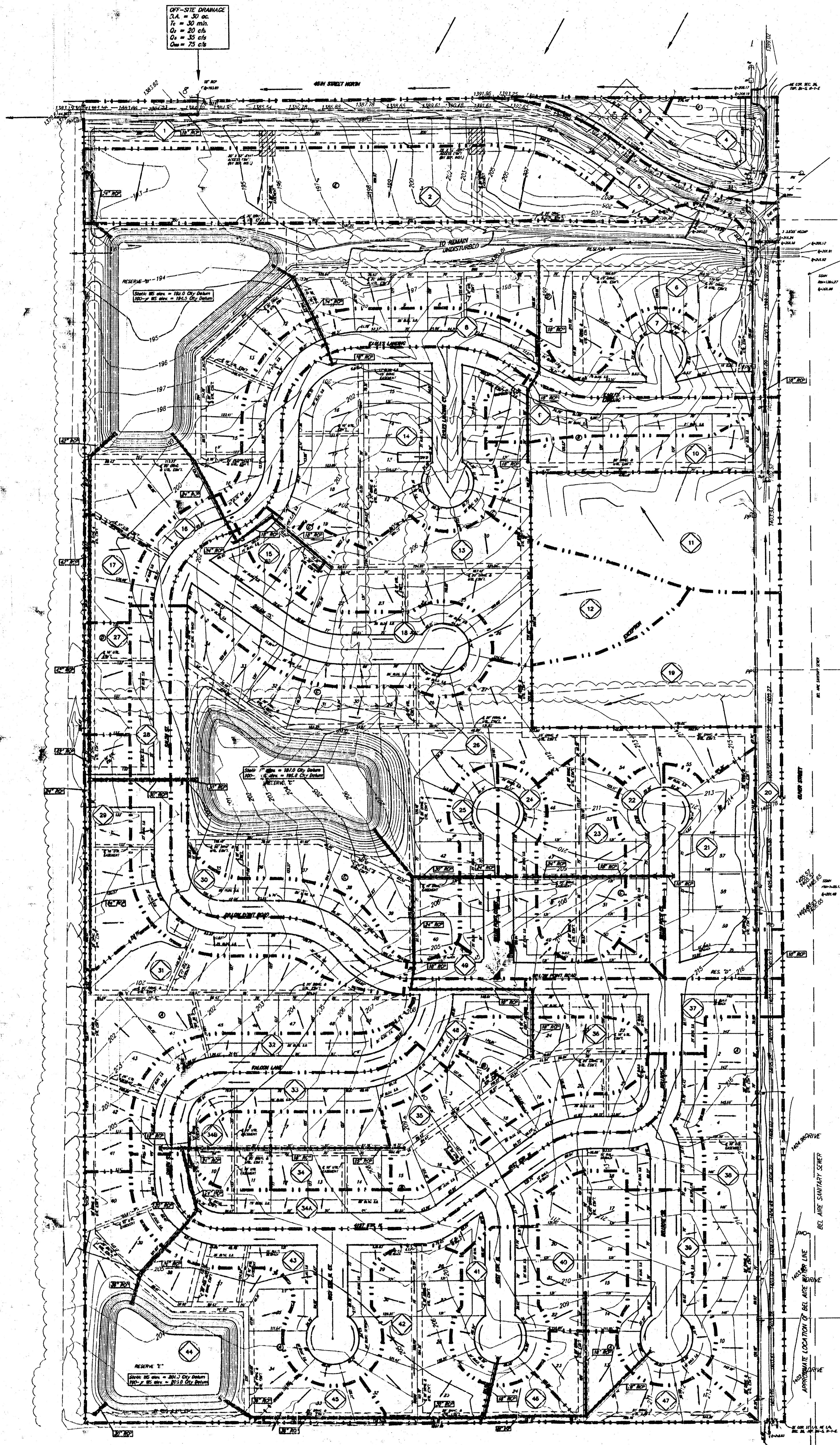


DRAINAGE PLAN EAGLES LANDING AT NORTH OLIVER WICHITA, SEDGWICK COUNTY, KANSAS



OFF-SITE DRAINAGE
A = 140 ac
I_c = 35 min
Q₁ = 120 cfs
Q₂ = 330 cfs

Basin	Area acres	Runoff Coefficient			Peak Flowrate		
		2-yr h/h	5-yr h/h	100-yr h/h	2-yr cfs	5-yr cfs	100-yr cfs
1	2.3	0.50	0.54	0.76	4.4	6.1	13
2	3.1	0.50	0.54	0.76	6.1	8.4	19
3	0.4	0.50	0.54	0.76	0.8	1.0	2.2
4	1.0	0.50	0.54	0.76	1.8	2.5	5.6
5	0.5	0.50	0.54	0.76	1.0	1.2	2.8
6	9.4	0.70	0.82	0.86	25	35	60
7	1.0	0.50	0.54	0.76	1.9	2.5	5.6
8	1.5	0.50	0.54	0.76	2.2	3.7	8.4
9	1.0	0.50	0.54	0.76	1.8	2.5	5.6
10	1.2	0.50	0.54	0.76	2.3	3.0	8.7
11	2.2	0.50	0.54	0.76	4.2	5.4	12
12	1.1	0.50	0.54	0.76	2.1	2.7	6.2
13	1.7	0.50	0.54	0.76	3.3	4.2	9.5
14	3.3	0.50	0.54	0.76	6.3	8.1	19
15	0.4	0.50	0.54	0.76	0.8	1.0	2.2
16	0.5	0.50	0.54	0.76	1.0	1.2	2.8
17	0.4	0.50	0.54	0.76	0.8	1.0	2.2
18	2.2	0.50	0.54	0.76	4.2	5.4	12
19	2.3	0.50	0.54	0.76	4.4	5.7	13
20	0.5	0.50	0.54	0.76	1.0	1.2	2.8
21	1.6	0.50	0.54	0.76	3.1	4.4	10
22	0.7	0.50	0.54	0.76	1.3	1.7	3.9
23	1.4	0.50	0.54	0.76	2.7	3.4	7.8
24	1.0	0.50	0.54	0.76	1.8	2.5	5.6
25	0.7	0.50	0.54	0.76	1.3	1.7	3.9
26	7.0	0.70	0.82	0.86	19	26	44
27	0.5	0.50	0.54	0.76	1.0	1.2	2.8
28	1.9	0.50	0.54	0.76	3.6	4.7	11
29	1.0	0.50	0.54	0.76	1.8	2.5	5.6
30	1.2	0.50	0.54	0.76	2.3	3.0	8.7
31	2.7	0.50	0.54	0.76	5.2	6.8	15
32	1.1	0.50	0.54	0.76	2.1	2.7	6.2
33	1.0	0.50	0.54	0.76	1.8	2.5	5.6
34	1.3	0.50	0.54	0.76	2.5	3.2	7.3
34A	1.9	0.50	0.54	0.76	3.6	4.7	11
34B	0.8	0.50	0.54	0.76	1.5	2.0	4.5
35	0.9	0.50	0.54	0.76	1.7	2.2	5.0
36	1.1	0.50	0.54	0.76	2.1	2.7	6.2
37	1.6	0.50	0.54	0.76	3.1	3.9	9.0
38	0.6	0.50	0.54	0.76	1.0	1.2	2.8
39	1.4	0.50	0.54	0.76	2.7	3.4	7.8
40	1.2	0.50	0.54	0.76	2.3	3.0	8.7
41	1.1	0.50	0.54	0.76	2.1	2.7	6.2
42	1.3	0.50	0.54	0.76	2.7	3.4	7.8
43	3.4	0.50	0.54	0.76	6.5	8.4	19
44	3.2	0.70	0.82	0.86	8.6	12	20
45	0.4	0.50	0.54	0.76	0.8	1.0	2.2
46	0.3	0.50	0.54	0.76	0.6	0.7	1.7
47	1.0	0.50	0.54	0.76	1.8	2.5	5.6
48	0.2	0.50	0.54	0.76	0.4	0.5	1.1
49	0.2	0.50	0.54	0.76	0.4	0.5	1.1

LOT	BLOCK	ELEVATION MGD
34-40	A	205.0
27-32, 41-44	B	201.0
2	D	207.0
3	D	206.0
5	D	204.0
6	D	203.0
7	D	202.5
8	D	201.5
9	D	201.0
10	D	200.5
11	D	198.0
12-18	D	196.5

NOTE: The proposed drainage plan provided herein is a generally defined plan to follow for design. It is recognized and assumed that upon the final design of street and storm sewer improvements within the plan that the designer will modify or alter the general drainage plan as necessary in order to implement the installation of the improvements to obtain the most economical design and construction possible.