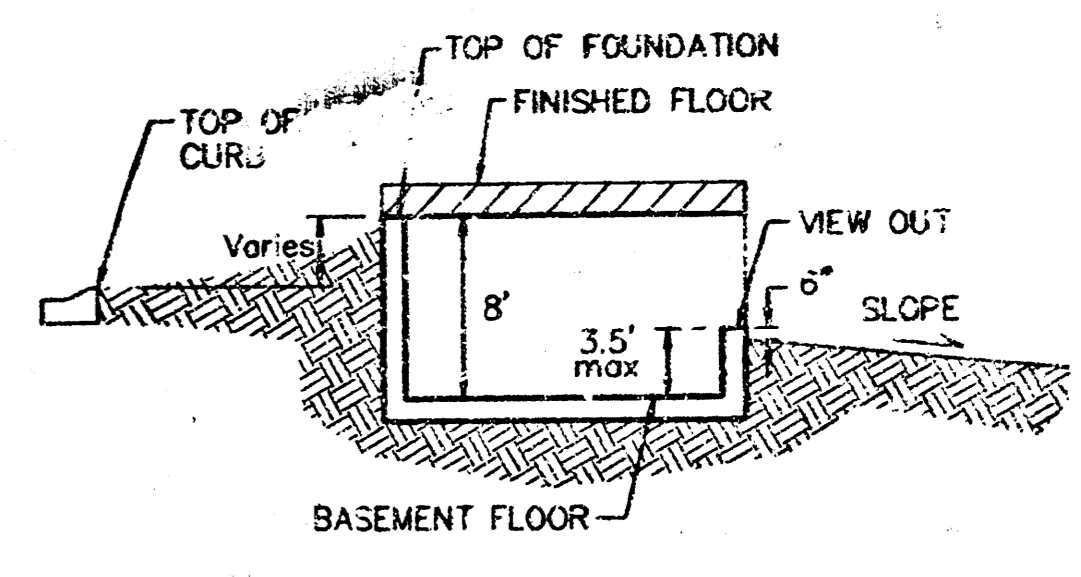
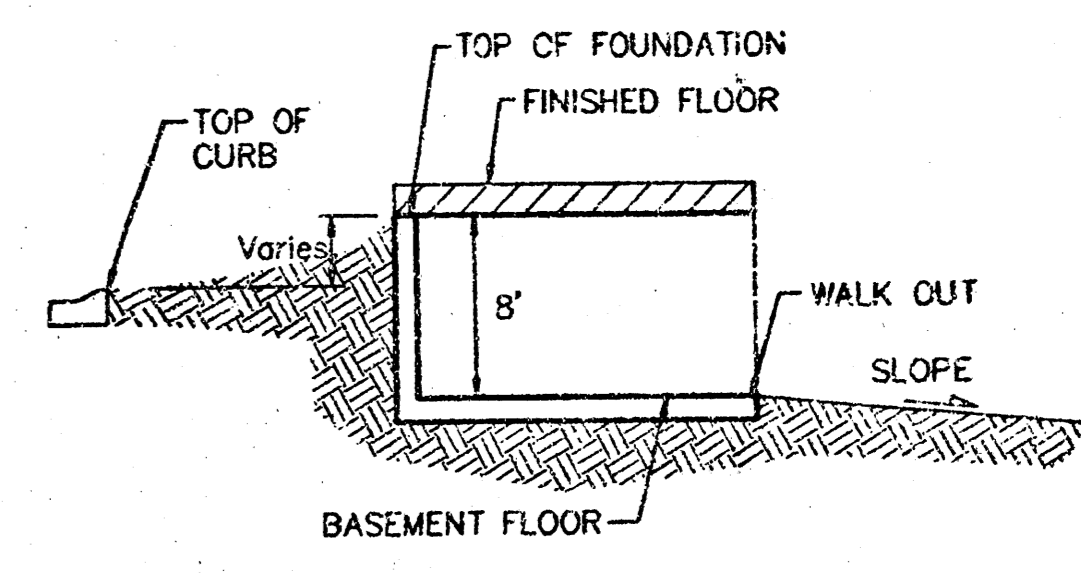


SCALE: 1" = 60'
 • = Iron



TYPICAL VIEW OUT
 NO SCALE



TYPICAL WALK OUT
 NO SCALE

NOTES:

Proposed Top of Foundation Elevations Are Shown On Plans. Contractor to Set Finished Floor Elevations.

All Street Elevations Shown on Plans are for Top of Curb (Full-Height).

This Grading Plan is Designed with View-Out & Walk Basements. Elevations Shown at Rear of House (X.X' V.O. or X.X' W.O.) Are for Minimum Opening.

MINIMUM BUILDING PAD ELEVATIONS FOR LOWEST OPENING TO THE STRUCTURES		
LOT	BLOCK	ELEVATION CITY DATUM
34-40	A	205.0
27-30, 41-44	C	201.0
2	D	207.0
3	D	206.0
5	D	204.0
6	D	203.0
7	D	202.5
8	D	201.5
9	D	201.7
10	D	200.5
11	D	198.0
12-18	D	196.5

APPROVED DRAINAGE PLAN

PRELIMINARY PLAN
 NOT FOR CONSTRUCTION

EAGLES LANDING AT NORTH OLIVER
GRADING PLAN
 WICHITA, KANSAS

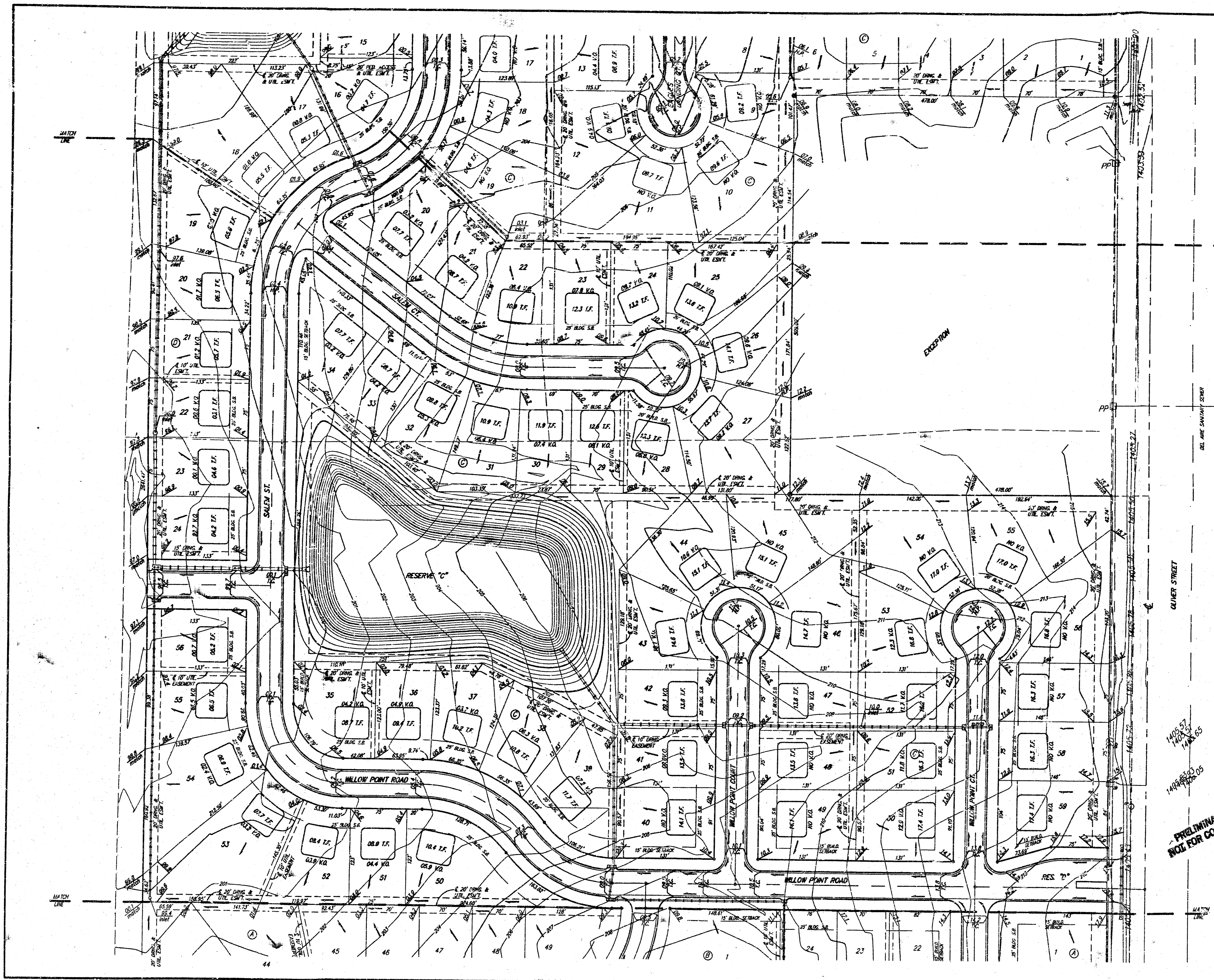
BAUGHMAN COMPANY P.A.
 ENGINEERING, SURVEYING, & PLANNING
 316-262-2271 • 316 ELLIS • WICHITA, KANSAS 67211

PROJECT NUMBER _____

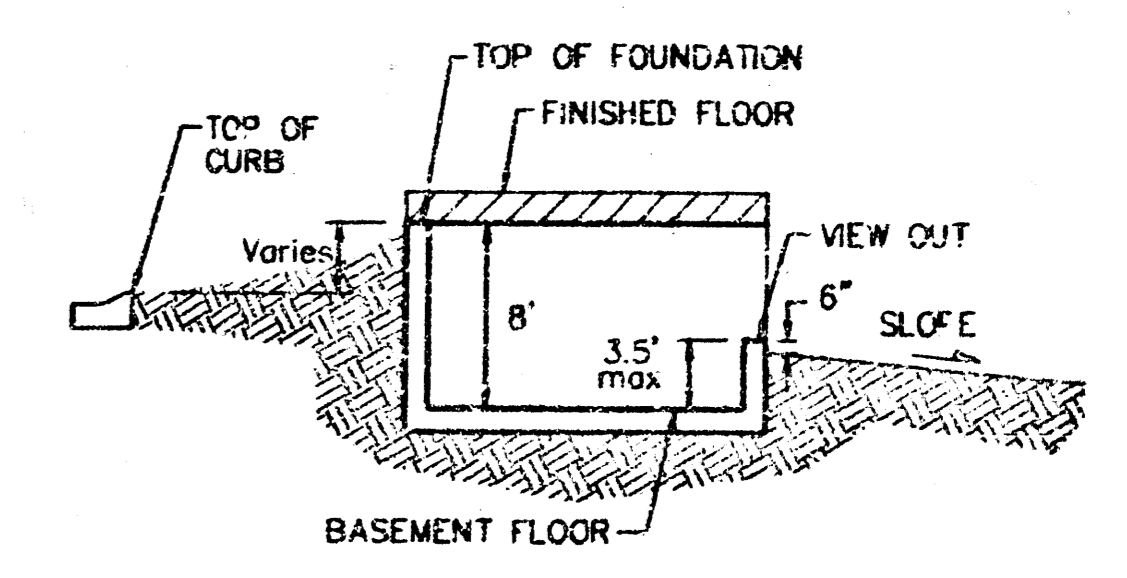
DESIGN: BLC DRAWN: BLC APPROVED: _____ DATE: 04/10/01 SCALE: NOTED

SHEET 1 OF 3

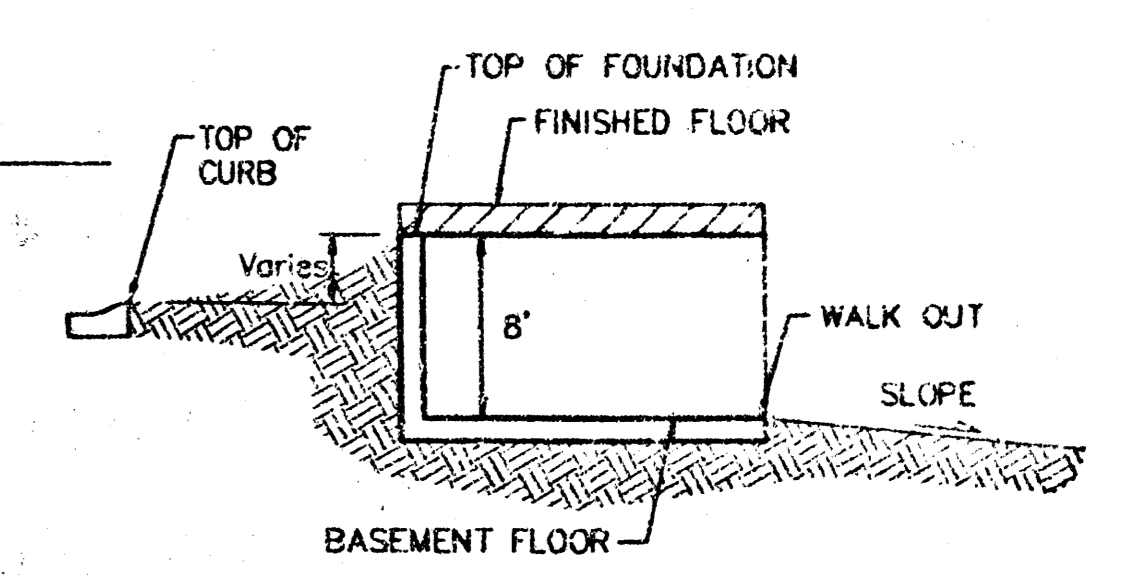
NEW DRAINAGE RULES!



SCALE: 1" = 60'
• = Iron



TYPICAL VIEW OUT
NO SCALE



TYPICAL WALK OUT
NO SCALE

NOTES:

Proposed Top of Foundation Elevations Are Shown on Plans. Contractor to Set Finished Floor Elevations.
All Street Elevations Shown on Plans Are for Top of Curb (Full-Height).
This Grading Plan is Designed with View-Out & Walk Basements. Elevations Shown at Rear of House (XX.X V.O. or XX.X W.O.) Are for Minimum Opening.

MINIMUM FINISHING PAD ELEVATIONS FOR LOWEST FINISHING TO THE STRUCTURES		
LOT	BLOCK	ELEVATION CITY DATUM
34-40	A	205.0
27-39, 41-44	C	201.0
2	D	207.0
3	D	206.0
5	D	204.0
6	D	201.0
7	D	202.5
8	D	201.5
9	D	201.0
10	D	202.5
11	D	198.0
12-18	D	196.5

1406 ST
1405 ST
1404 ST
1403 ST
1402 ST
1401 ST
1400 ST
1399 ST
1398 ST
1397 ST
1396 ST
1395 ST
1394 ST
1393 ST
1392 ST
1391 ST
1390 ST
1389 ST
1388 ST
1387 ST
1386 ST
1385 ST
1384 ST
1383 ST
1382 ST
1381 ST
1380 ST
1379 ST
1378 ST
1377 ST
1376 ST
1375 ST
1374 ST
1373 ST
1372 ST
1371 ST
1370 ST
1369 ST
1368 ST
1367 ST
1366 ST
1365 ST
1364 ST
1363 ST
1362 ST
1361 ST
1360 ST
1359 ST
1358 ST
1357 ST
1356 ST
1355 ST
1354 ST
1353 ST
1352 ST
1351 ST
1350 ST
1349 ST
1348 ST
1347 ST
1346 ST
1345 ST
1344 ST
1343 ST
1342 ST
1341 ST
1340 ST
1339 ST
1338 ST
1337 ST
1336 ST
1335 ST
1334 ST
1333 ST
1332 ST
1331 ST
1330 ST
1329 ST
1328 ST
1327 ST
1326 ST
1325 ST
1324 ST
1323 ST
1322 ST
1321 ST
1320 ST
1319 ST
1318 ST
1317 ST
1316 ST
1315 ST
1314 ST
1313 ST
1312 ST
1311 ST
1310 ST
1309 ST
1308 ST
1307 ST
1306 ST
1305 ST
1304 ST
1303 ST
1302 ST
1301 ST
1300 ST
1299 ST
1298 ST
1297 ST
1296 ST
1295 ST
1294 ST
1293 ST
1292 ST
1291 ST
1290 ST
1289 ST
1288 ST
1287 ST
1286 ST
1285 ST
1284 ST
1283 ST
1282 ST
1281 ST
1280 ST
1279 ST
1278 ST
1277 ST
1276 ST
1275 ST
1274 ST
1273 ST
1272 ST
1271 ST
1270 ST
1269 ST
1268 ST
1267 ST
1266 ST
1265 ST
1264 ST
1263 ST
1262 ST
1261 ST
1260 ST
1259 ST
1258 ST
1257 ST
1256 ST
1255 ST
1254 ST
1253 ST
1252 ST
1251 ST
1250 ST
1249 ST
1248 ST
1247 ST
1246 ST
1245 ST
1244 ST
1243 ST
1242 ST
1241 ST
1240 ST
1239 ST
1238 ST
1237 ST
1236 ST
1235 ST
1234 ST
1233 ST
1232 ST
1231 ST
1230 ST
1229 ST
1228 ST
1227 ST
1226 ST
1225 ST
1224 ST
1223 ST
1222 ST
1221 ST
1220 ST
1219 ST
1218 ST
1217 ST
1216 ST
1215 ST
1214 ST
1213 ST
1212 ST
1211 ST
1210 ST
1209 ST
1208 ST
1207 ST
1206 ST
1205 ST
1204 ST
1203 ST
1202 ST
1201 ST
1200 ST
1199 ST
1198 ST
1197 ST
1196 ST
1195 ST
1194 ST
1193 ST
1192 ST
1191 ST
1190 ST
1189 ST
1188 ST
1187 ST
1186 ST
1185 ST
1184 ST
1183 ST
1182 ST
1181 ST
1180 ST
1179 ST
1178 ST
1177 ST
1176 ST
1175 ST
1174 ST
1173 ST
1172 ST
1171 ST
1170 ST
1169 ST
1168 ST
1167 ST
1166 ST
1165 ST
1164 ST
1163 ST
1162 ST
1161 ST
1160 ST
1159 ST
1158 ST
1157 ST
1156 ST
1155 ST
1154 ST
1153 ST
1152 ST
1151 ST
1150 ST
1149 ST
1148 ST
1147 ST
1146 ST
1145 ST
1144 ST
1143 ST
1142 ST
1141 ST
1140 ST
1139 ST
1138 ST
1137 ST
1136 ST
1135 ST
1134 ST
1133 ST
1132 ST
1131 ST
1130 ST
1129 ST
1128 ST
1127 ST
1126 ST
1125 ST
1124 ST
1123 ST
1122 ST
1121 ST
1120 ST
1119 ST
1118 ST
1117 ST
1116 ST
1115 ST
1114 ST
1113 ST
1112 ST
1111 ST
1110 ST
1109 ST
1108 ST
1107 ST
1106 ST
1105 ST
1104 ST
1103 ST
1102 ST
1101 ST
1100 ST
1099 ST
1098 ST
1097 ST
1096 ST
1095 ST
1094 ST
1093 ST
1092 ST
1091 ST
1090 ST
1089 ST
1088 ST
1087 ST
1086 ST
1085 ST
1084 ST
1083 ST
1082 ST
1081 ST
1080 ST
1079 ST
1078 ST
1077 ST
1076 ST
1075 ST
1074 ST
1073 ST
1072 ST
1071 ST
1070 ST
1069 ST
1068 ST
1067 ST
1066 ST
1065 ST
1064 ST
1063 ST
1062 ST
1061 ST
1060 ST
1059 ST
1058 ST
1057 ST
1056 ST
1055 ST
1054 ST
1053 ST
1052 ST
1051 ST
1050 ST
1049 ST
1048 ST
1047 ST
1046 ST
1045 ST
1044 ST
1043 ST
1042 ST
1041 ST
1040 ST
1039 ST
1038 ST
1037 ST
1036 ST
1035 ST
1034 ST
1033 ST
1032 ST
1031 ST
1030 ST
1029 ST
1028 ST
1027 ST
1026 ST
1025 ST
1024 ST
1023 ST
1022 ST
1021 ST
1020 ST
1019 ST
1018 ST
1017 ST
1016 ST
1015 ST
1014 ST
1013 ST
1012 ST
1011 ST
1010 ST
1009 ST
1008 ST
1007 ST
1006 ST
1005 ST
1004 ST
1003 ST
1002 ST
1001 ST
1000 ST
999 ST
998 ST
997 ST
996 ST
995 ST
994 ST
993 ST
992 ST
991 ST
990 ST
989 ST
988 ST
987 ST
986 ST
985 ST
984 ST
983 ST
982 ST
981 ST
980 ST
979 ST
978 ST
977 ST
976 ST
975 ST
974 ST
973 ST
972 ST
971 ST
970 ST
969 ST
968 ST
967 ST
966 ST
965 ST
964 ST
963 ST
962 ST
961 ST
960 ST
959 ST
958 ST
957 ST
956 ST
955 ST
954 ST
953 ST
952 ST
951 ST
950 ST
949 ST
948 ST
947 ST
946 ST
945 ST
944 ST
943 ST
942 ST
941 ST
940 ST
939 ST
938 ST
937 ST
936 ST
935 ST
934 ST
933 ST
932 ST
931 ST
930 ST
929 ST
928 ST
927 ST
926 ST
925 ST
924 ST
923 ST
922 ST
921 ST
920 ST
919 ST
918 ST
917 ST
916 ST
915 ST
914 ST
913 ST
912 ST
911 ST
910 ST
909 ST
908 ST
907 ST
906 ST
905 ST
904 ST
903 ST
902 ST
901 ST
900 ST
899 ST
898 ST
897 ST
896 ST
895 ST
894 ST
893 ST
892 ST
891 ST
890 ST
889 ST
888 ST
887 ST
886 ST
885 ST
884 ST
883 ST
882 ST
881 ST
880 ST
879 ST
878 ST
877 ST
876 ST
875 ST
874 ST
873 ST
872 ST
871 ST
870 ST
869 ST
868 ST
867 ST
866 ST
865 ST
864 ST
863 ST
862 ST
861 ST
860 ST
859 ST
858 ST
857 ST
856 ST
855 ST
854 ST
853 ST
852 ST
851 ST
850 ST
849 ST
848 ST
847 ST
846 ST
845 ST
844 ST
843 ST
842 ST
841 ST
840 ST
839 ST
838 ST
837 ST
836 ST
835 ST
834 ST
833 ST
832 ST
831 ST
830 ST
829 ST
828 ST
827 ST
826 ST
825 ST
824 ST
823 ST
822 ST
821 ST
820 ST
819 ST
818 ST
817 ST
816 ST
815 ST
814 ST
813 ST
812 ST
811 ST
810 ST
809 ST
808 ST
807 ST
806 ST
805 ST
804 ST
803 ST
802 ST
801 ST
800 ST
799 ST
798 ST
797 ST
796 ST
795 ST
794 ST
793 ST
792 ST
791 ST
790 ST
789 ST
788 ST
787 ST
786 ST
785 ST
784 ST
783 ST
782 ST
781 ST
780 ST
779 ST
778 ST
777 ST
776 ST
775 ST
774 ST
773 ST
772 ST
771 ST
770 ST
769 ST
768 ST
767 ST
766 ST
765 ST
764 ST
763 ST
762 ST
761 ST
760 ST
759 ST
758 ST
757 ST
756 ST
755 ST
754 ST
753 ST
752 ST
751 ST
750 ST
749 ST
748 ST
747 ST
746 ST
745 ST
744 ST
743 ST
742 ST
741 ST
740 ST
739 ST
738 ST
737 ST
736 ST
735 ST
734 ST
733 ST
732 ST
731 ST
730 ST
729 ST
728 ST
727 ST
726 ST
725 ST
724 ST
723 ST
722 ST
721 ST
720 ST
719 ST
718 ST
717 ST
716 ST
715 ST
714 ST
713 ST
712 ST
711 ST
710 ST
709 ST
708 ST
707 ST
706 ST
705 ST
704 ST
703 ST
702 ST
701 ST
700 ST
699 ST
698 ST
697 ST
696 ST
695 ST
694 ST
693 ST
692 ST
691 ST
690 ST
689 ST
688 ST
687 ST
686 ST
685 ST
684 ST
683 ST
682 ST
681 ST
680 ST
679 ST
678 ST
677 ST
676 ST
675 ST
674 ST
673 ST
672 ST
671 ST
670 ST
669 ST
668 ST
667 ST
666 ST
665 ST
664 ST
663 ST
662 ST
661 ST
660 ST
659 ST
658 ST
657 ST
656 ST
655 ST
654 ST
653 ST
652 ST
651 ST
650 ST
649 ST
648 ST
647 ST
646 ST
645 ST
644 ST
643 ST
642 ST
641 ST
640 ST
639 ST
638 ST
637 ST
636 ST
635 ST
634 ST
633 ST
632 ST
631 ST
630 ST
629 ST
628 ST
627 ST
626 ST
625 ST
624 ST
623 ST
622 ST
621 ST
620 ST
619 ST
618 ST
617 ST
616 ST
615 ST
614 ST
613 ST
612 ST
611 ST
610 ST
609 ST
608 ST
607 ST
606 ST
605 ST
604 ST
603 ST
602 ST
601 ST
600 ST
599 ST
598 ST
597 ST
596 ST
595 ST
594 ST
593 ST
592 ST
591 ST
590 ST
589 ST
588 ST
587 ST
586 ST
585 ST
584 ST
583 ST
582 ST
581 ST
580 ST
579 ST
578 ST
577 ST
576 ST
575 ST
574 ST
573 ST
572 ST
571 ST
570 ST
569 ST
568 ST
567 ST
566 ST
565 ST
564 ST
563 ST
562 ST
561 ST
560 ST
559 ST
558 ST
557 ST
556 ST
555 ST
554 ST
553 ST
552 ST
551 ST
550 ST
549 ST
548 ST
547 ST
546 ST
545 ST
544 ST
543 ST
542 ST
541 ST
540 ST
539 ST
538 ST
537 ST
536 ST
535 ST
534 ST
533 ST
532 ST
531 ST
530 ST
529 ST
528 ST
527 ST
526 ST
525 ST
524 ST
523 ST
522 ST
521 ST
520 ST
519 ST
518 ST
517 ST
516 ST
515 ST
514 ST
513 ST
512 ST
511 ST
510 ST
509 ST
508 ST
507 ST
506 ST
505 ST
504 ST
503 ST
502 ST
501 ST
500 ST
499 ST
498 ST
497 ST
496 ST
495 ST
494 ST
493 ST
492 ST
491 ST
490 ST
489 ST
488 ST
487 ST
486 ST
485 ST
484 ST
483 ST
482 ST
481 ST
480 ST
479 ST
478 ST
477 ST
476 ST
475 ST
474 ST
473 ST
472 ST
471 ST
470 ST
469 ST
468 ST
467 ST
466 ST
465 ST
464 ST
463 ST
462 ST
461 ST
460 ST
459 ST
458 ST
457 ST
456 ST
455 ST
454 ST
453 ST
452 ST
451 ST
450 ST
449 ST
448 ST
447 ST
446 ST
445 ST
444 ST
443 ST
442 ST
441 ST
440 ST
439 ST
438 ST
437 ST
436 ST
435 ST
434 ST
433 ST
432 ST
431 ST
430 ST
429 ST
428 ST
427 ST
426 ST
425 ST
424 ST
423 ST
422 ST
421 ST
420 ST
419 ST
418 ST
417 ST
416 ST
415 ST
414 ST
413 ST
412 ST
411 ST
410 ST
409 ST
408 ST
407 ST
406 ST
405 ST
404 ST
403 ST
402 ST
401 ST
400 ST
399 ST
398 ST
397 ST
396 ST
395 ST
394 ST
393 ST
392 ST
391 ST
390 ST
389 ST
388 ST
387 ST
386 ST
385 ST
384 ST
383 ST
382 ST
381 ST
380 ST
379 ST
378 ST
377 ST
376 ST
375 ST
374 ST
373 ST
372 ST
371 ST
370 ST
369 ST
368 ST
367 ST
366 ST
365 ST
364 ST
363 ST
362 ST
361 ST
360 ST
359 ST
358 ST
357 ST
356 ST
355 ST
354 ST
353 ST
352 ST
351 ST
350 ST
349 ST
348 ST
347 ST
346 ST
345 ST
344 ST
343 ST
342 ST
341 ST
340 ST
339 ST
338 ST
337 ST
336 ST
335 ST
334 ST
333 ST
332 ST
331 ST
330 ST
329 ST
328 ST
327 ST
326 ST
325 ST
324 ST
323 ST
322 ST
321 ST
320 ST
319 ST
318 ST
317 ST
316 ST
315 ST
314 ST
313 ST
312 ST
311 ST
310 ST
309 ST
308 ST
307 ST
306 ST
305 ST
304 ST
303 ST
302 ST
301 ST
300 ST
299 ST
298 ST
297 ST
296 ST
295 ST
294 ST
293 ST
292 ST
291 ST
290 ST
289 ST
288 ST
287 ST
286 ST
285 ST
284 ST
283 ST
282 ST
281 ST
280 ST
279 ST
278 ST
277 ST
276 ST
275 ST
274 ST
273 ST
272 ST
271 ST
270 ST
269 ST
268 ST
267 ST
266 ST
265 ST
264 ST
263 ST
262 ST
261 ST
260 ST
259 ST
258 ST
257 ST
256 ST
255 ST
254 ST
253 ST
252 ST
251 ST
250 ST
249 ST
248 ST
247 ST
246 ST
245 ST
244 ST
243 ST
242 ST
241 ST
240 ST
239 ST
238 ST
237 ST
236 ST
235 ST
234 ST
233 ST
232 ST
231 ST
230 ST
229 ST
228 ST
227 ST
226 ST
225 ST
224 ST
223 ST
222 ST
221 ST
220 ST
219 ST
218 ST
217 ST
216 ST
215 ST
214 ST
213 ST
212 ST
211 ST
210 ST
209 ST
208 ST
207 ST
206 ST
205 ST
204 ST
203 ST
202 ST
201 ST
200 ST
199 ST
198 ST
197 ST
196 ST
195 ST
194 ST
193 ST
192 ST
191 ST
190 ST
189 ST
188 ST
187 ST
186 ST
185 ST
184 ST
183 ST
182 ST
181 ST
180 ST
179 ST
178 ST
177 ST
176 ST
175 ST
174 ST
173 ST
172 ST
171 ST
170 ST
169 ST
168 ST
167 ST
166 ST
165 ST
164 ST
163 ST
162 ST
161 ST
160 ST
159 ST
158 ST
157 ST
156 ST
155 ST
154 ST
153 ST
152 ST
151 ST
150 ST
149 ST
148 ST
147 ST
146 ST
145 ST
144 ST
143 ST
142 ST
141 ST
140 ST
139 ST
138 ST
137 ST
136 ST
135 ST
134 ST
133 ST
132 ST
131 ST
130 ST
129 ST
128 ST
127 ST
126 ST
125 ST
124 ST
123 ST
122 ST
121 ST
120 ST
119 ST
118 ST
117 ST
116 ST
115 ST
114 ST
113 ST
112 ST
111 ST
110 ST
109 ST
108 ST
107 ST
106 ST
105 ST
104 ST
103 ST
102 ST
101 ST
100 ST
99 ST
98 ST
97 ST
96 ST
95 ST
94 ST
93 ST
92 ST
91 ST
90 ST
89 ST
88 ST
87 ST
86 ST
85 ST
84 ST
83 ST
82 ST
81 ST
80 ST
79 ST
78 ST
77 ST
76 ST
75 ST
74 ST
73 ST
72 ST
71 ST
70 ST
69 ST
68 ST
67 ST
66 ST
65 ST
64 ST
63 ST
62 ST
61 ST
60 ST
59 ST
58 ST
57 ST
56 ST
55 ST
54 ST
53 ST
52 ST
51 ST
50 ST
49 ST
48 ST
47 ST
46 ST
45 ST
44 ST
43 ST
42 ST
41 ST
40 ST
39 ST
38 ST
37 ST
36 ST
35 ST
34 ST
33 ST
32 ST
31 ST
30 ST
29 ST
28 ST
27 ST
26 ST
25 ST
24 ST
23 ST
22 ST
21 ST
20 ST
19 ST
18 ST
17 ST
16 ST
15 ST
14 ST
13 ST
12 ST
11 ST
10 ST
9 ST
8 ST
7 ST
6 ST
5 ST
4 ST
3 ST
2 ST
1 ST

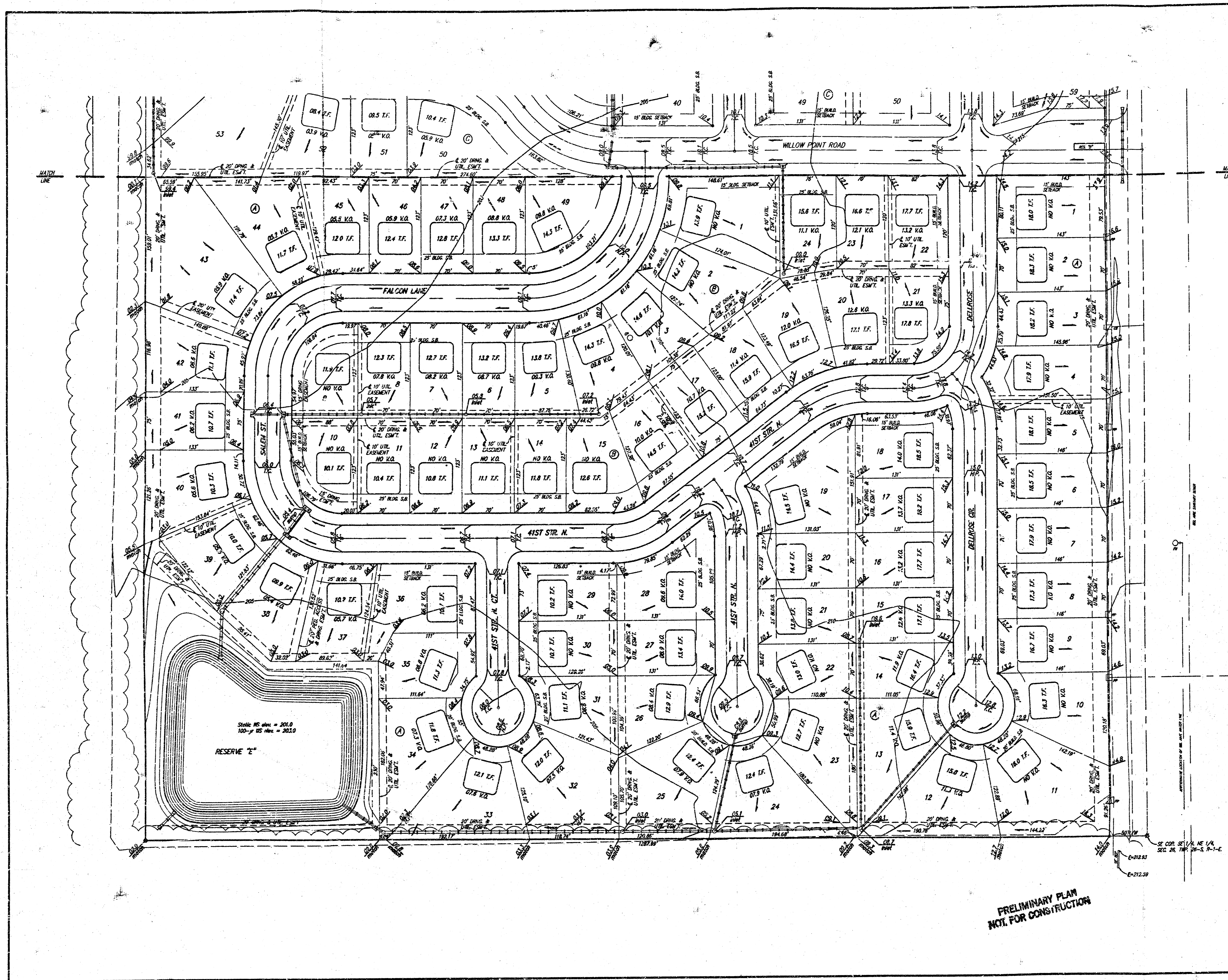
PRELIMINARY PLAN
NOT FOR CONSTRUCTION

EAGLES LANDING AT NORTH OLIVER
GRADING PLAN
WICHITA, KANSAS

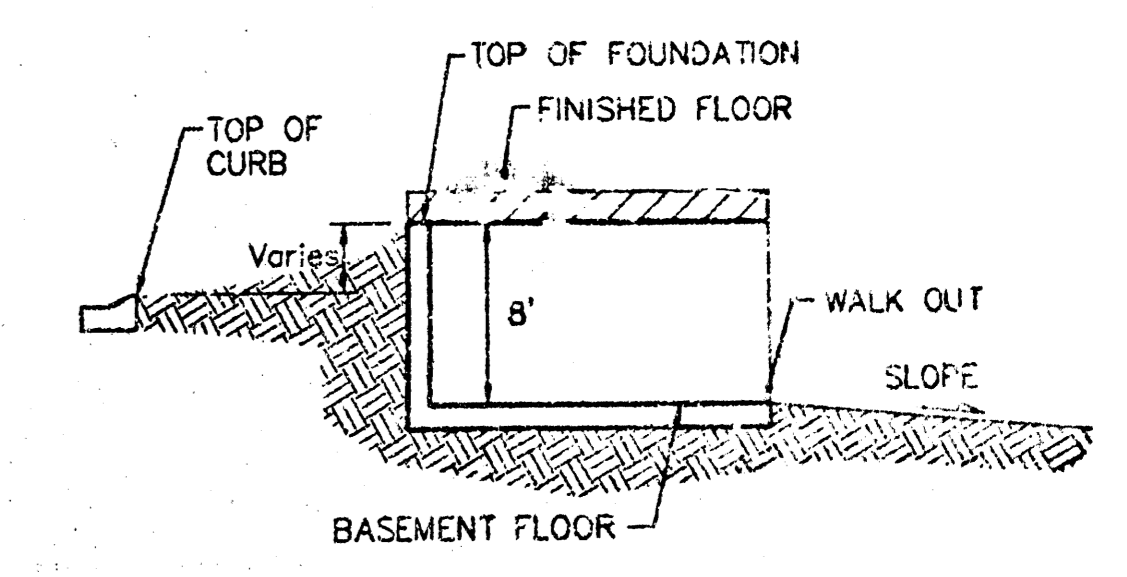
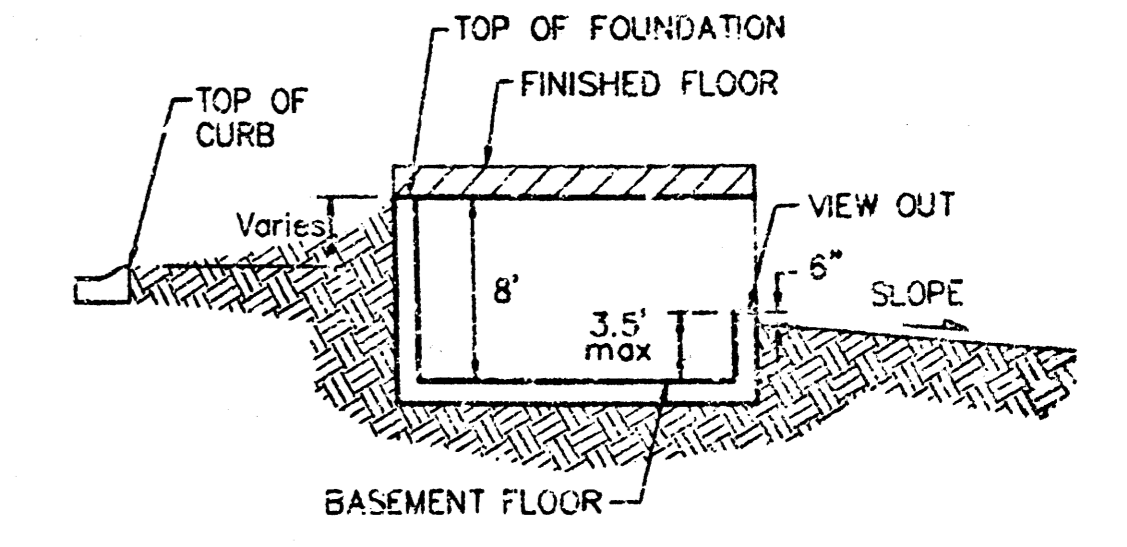
BAUGHMAN COMPANY P.A.
ENGINEERING, SURVEYING, & PLANNING
311A-752-7271 • 310 ELLIS • WICHITA, KANSAS 67211

PROJECT NUMBER

DESIGN	DRAWN	APPROVED	DATE	SCALE	SHEET
BLG	BLG/CX		04/06/01	NOTED	3



SCALE: 1" = 60'
• = Iron



NOTES:

Proposed Top of Foundation Elevations Are Shown On Plans. Contractor to Set Finished Floor Elevations.

All Street Elevations Shown on Plans are for Top of Curb (Full-Height).

This Grading Plan is Designed with View-Out & Walk Basements. Elevations Shown at Rear of House (XX.X' V.O. or XXX' W.O.) are for Minimum Opening.

MINIMUM BUILDING PAD ELEVATIONS FOR LOWEST OPENING TO THE STRUCTURES		
LOT	BLOCK	ELEVATION CITY DATUM
34-40	A	205.0
27-33, 41-44	C	201.0
2	D	207.0
3	D	206.0
5	D	204.0
6	D	203.0
7	D	202.5
8	D	201.5
9	D	201.0
10	D	200.5
11	D	198.0
12-18	D	196.5

PRELIMINARY PLAN
NOT FOR CONSTRUCTION

EAGLES LANDING AT NORTH OLIVER
GRADING PLAN
WICHITA, KANSAS

BAUGHMAN COMPANY P.A.
ENGINEERING, SURVEYING, & PLANNING
318-262-7271 • 316 ELLIS • WICHITA, KANSAS 67211

PROJECT NUMBER: _____ SHEET: 33 OF 33

DESIGN: BLG DRAWN: BLG, GX APPROVED: _____ DATE: 04/06/01 SCALE: NOTED