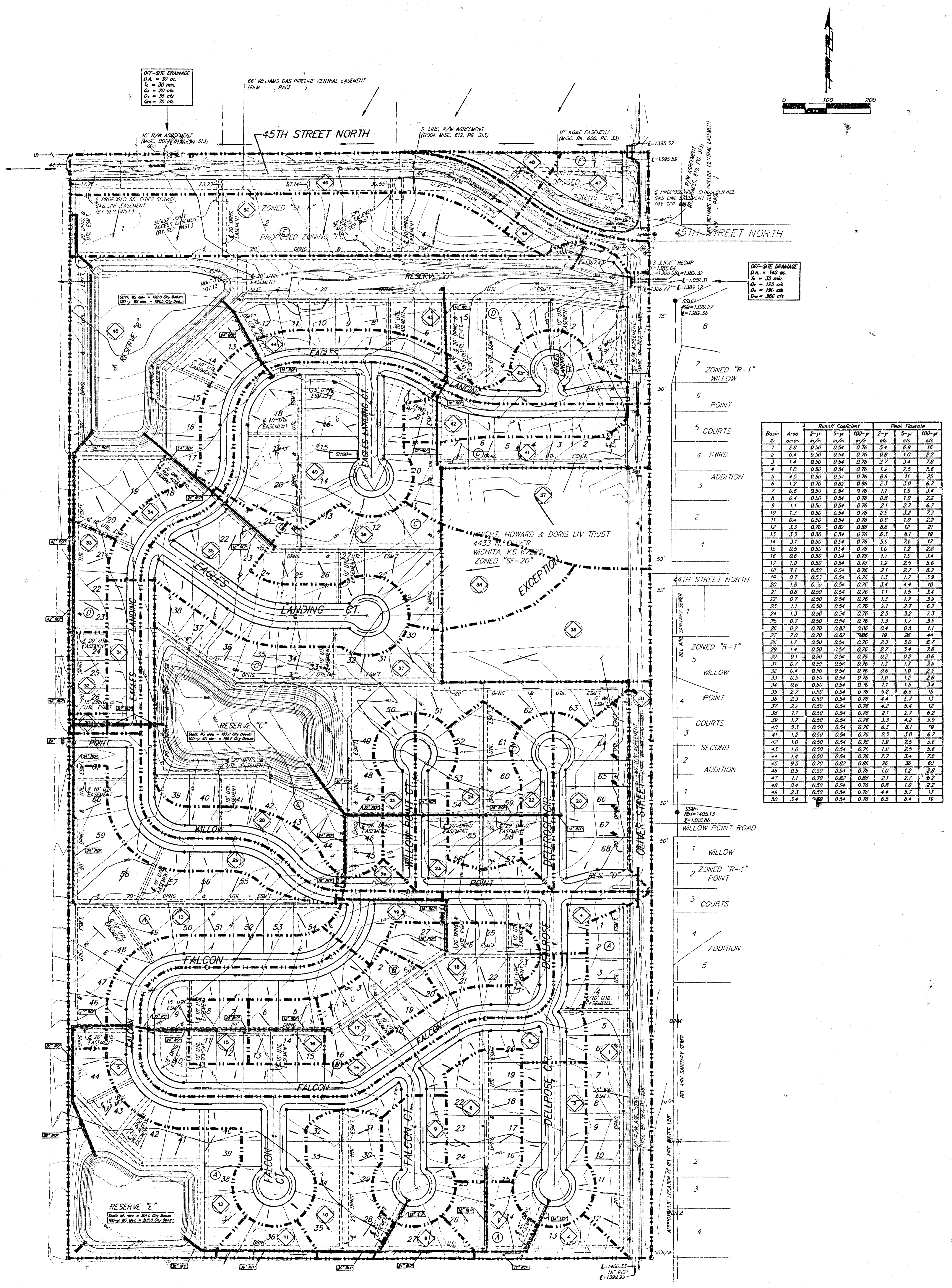


# DRAINAGE PLAN

## EAGLES LANDING AT NORTH OLIVER 2ND

### WICHITA, SEDGWICK COUNTY, KANSAS



**OFF-SITE DRAINAGE**  
 O.A. = 30 ac  
 I<sub>c</sub> = 30 min  
 O<sub>1</sub> = 20 cfs  
 O<sub>2</sub> = 35 cfs  
 O<sub>3</sub> = 75 cfs

**OFF-SITE DRAINAGE**  
 O.A. = 140 ac  
 I<sub>c</sub> = 30 min  
 O<sub>1</sub> = 150 cfs  
 O<sub>2</sub> = 180 cfs  
 O<sub>3</sub> = 300 cfs

Basin No.	Area (ac)	Runoff Coefficient			Peak Flowrate (cfs)		
		2-yr	5-yr	100-yr	2-yr	5-yr	100-yr
1	0.20	0.50	0.54	0.76	2.4	2.9	16
2	0.4	0.50	0.54	0.76	4.8	5.8	32
3	1.4	0.50	0.54	0.76	16.8	20.4	112
4	1.0	0.50	0.54	0.76	12.0	14.4	80
5	4.5	0.50	0.54	0.76	54.0	64.8	360
6	1.2	0.70	0.86	0.96	23.1	27.7	162
7	0.6	0.50	0.54	0.76	11.1	13.4	72
8	0.4	0.50	0.54	0.76	7.2	8.7	48
9	1.1	0.70	0.86	0.96	18.7	22.4	132
10	1.1	0.50	0.54	0.76	12.0	14.4	80
11	0.4	0.50	0.54	0.76	4.8	5.8	32
12	3.3	0.70	0.86	0.96	40.8	49.0	288
13	3.3	0.50	0.54	0.76	36.0	43.2	240
14	3.1	0.50	0.54	0.76	33.6	40.3	224
15	0.5	0.50	0.54	0.76	1.6	1.9	12
16	0.6	0.50	0.54	0.76	1.9	2.3	14
17	1.0	0.50	0.54	0.76	3.2	3.9	24
18	1.1	0.50	0.54	0.76	3.6	4.3	28
19	0.7	0.50	0.54	0.76	2.4	2.9	16
20	1.8	0.50	0.54	0.76	7.2	8.7	48
21	0.6	0.50	0.54	0.76	2.4	2.9	16
22	0.7	0.50	0.54	0.76	2.8	3.4	20
23	1.1	0.50	0.54	0.76	4.3	5.2	32
24	1.3	0.50	0.54	0.76	5.0	6.0	36
25	0.7	0.50	0.54	0.76	2.8	3.4	20
26	0.2	0.70	0.86	0.96	0.4	0.5	3
27	7.0	0.50	0.54	0.76	28.0	33.6	192
28	1.2	0.50	0.54	0.76	4.8	5.8	32
29	1.4	0.50	0.54	0.76	5.6	6.7	38
30	0.1	0.50	0.54	0.76	0.2	0.2	1
31	0.2	0.50	0.54	0.76	0.8	0.9	6
32	0.4	0.50	0.54	0.76	1.6	1.9	12
33	0.5	0.50	0.54	0.76	1.8	2.1	14
34	0.6	0.50	0.54	0.76	2.1	2.5	16
35	2.7	0.50	0.54	0.76	10.8	13.0	72
36	2.3	0.50	0.54	0.76	9.2	11.0	60
37	2.2	0.50	0.54	0.76	8.8	10.6	58
38	1.1	0.50	0.54	0.76	4.3	5.2	32
39	1.7	0.50	0.54	0.76	6.7	8.0	48
40	3.1	0.50	0.54	0.76	12.5	15.1	84
41	1.2	0.50	0.54	0.76	4.8	5.8	32
42	1.0	0.50	0.54	0.76	4.0	4.8	28
43	1.0	0.50	0.54	0.76	4.0	4.8	28
44	1.4	0.50	0.54	0.76	5.6	6.7	38
45	0.5	0.70	0.86	0.96	2.0	2.4	14
46	0.5	0.50	0.54	0.76	1.8	2.1	14
47	1.1	0.70	0.86	0.96	4.4	5.3	32
48	0.4	0.50	0.54	0.76	1.6	1.9	12
49	2.3	0.50	0.54	0.76	9.2	11.0	60
50	3.4	0.50	0.54	0.76	13.6	16.3	96

- 8
- 7 ZONED "R-1"
- 6 POINT
- 5 COURTS
- 4 T. HIRD
- 3 ADDITION
- 2
- 1
- 44TH STREET NORTH
- 50'
- 1
- 5 ZONED "R-1"
- 4 POINT
- 3 COURTS
- 2 ADDITION
- 1
- 50'
- 1 WILLOW
- 2 ZONED "R-1"
- 3 COURTS
- 4 ADDITION
- 5
- 50'
- 1
- 2
- 3
- 4
- 50'