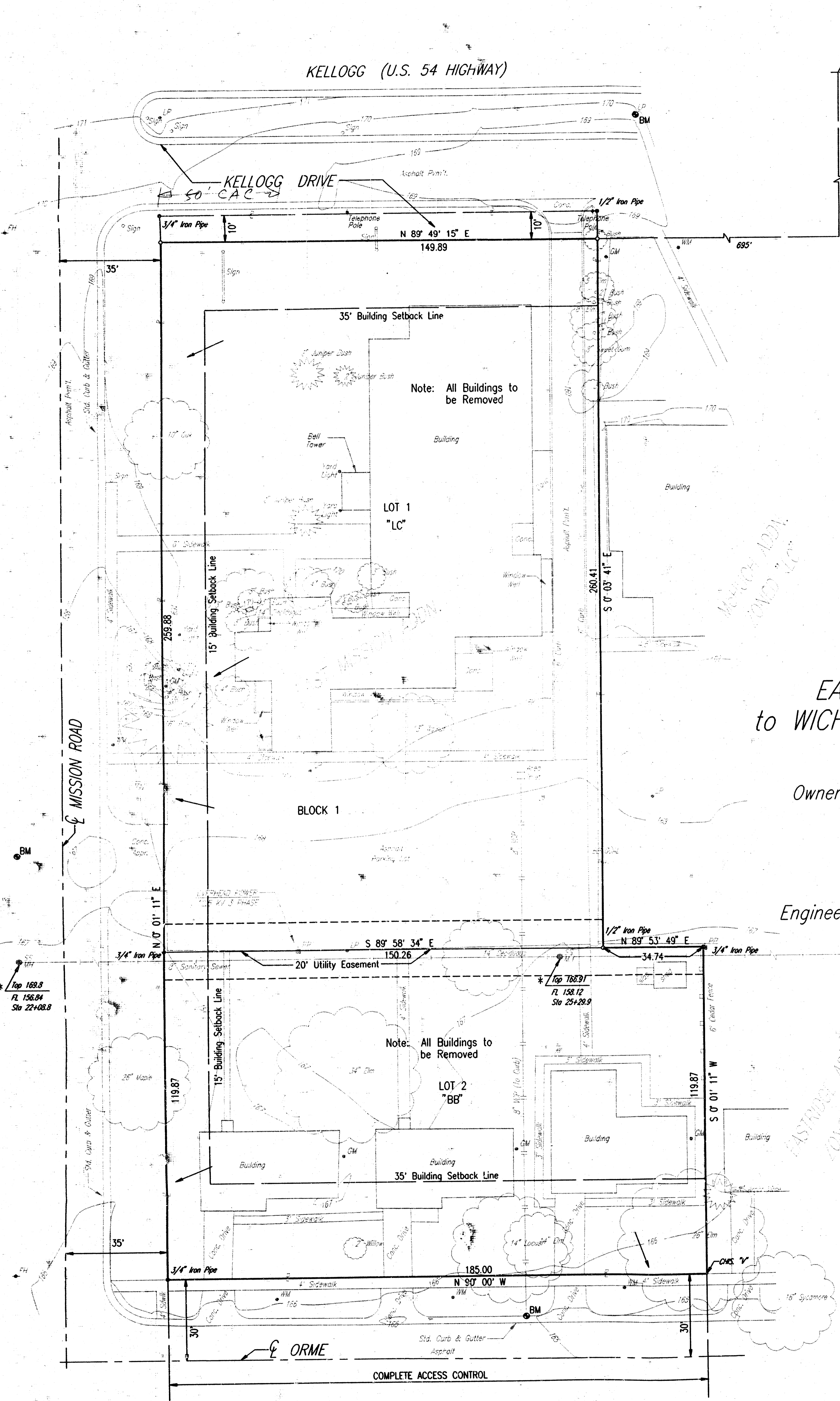


N 1/4 Corner SEC 30, T27S, R2E
of 6th P.M.

KELLOGG (U.S. 54 HIGHWAY)



Note: All Buildings to be Removed

Note: All Buildings to be Removed

Scale 1" = 20'
 August 1, 1994
 ○ = Set 3/4" I.P.
 ● = Iron Fd.
 * = Record Data Not Field Verified

B.M. Chis. "□" T/C West Side Mission St.
 180 Feet ± North of Centerline Orme
 ELEV. 167.265 City Datum.

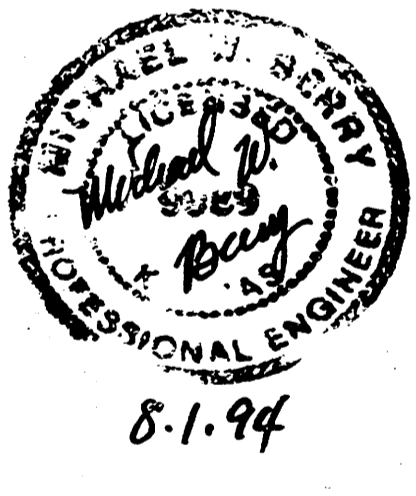
B.M. Chis. "□" T/C North Side Orme
 160 Feet ± East of Centerline Mission
 ELEV. 165.36 City Datum.

Vicky

*DRAINAGE PLAN OF
 EAST MISSION 2ND ADDITION
 to WICHITA, SEDGWICK COUNTY, KANSAS.*

Owner: Evangelical Lutheran Church
 of the Reformation, Inc.
 c/o Mike Buxton
 314 Rutan, Wichita, KS 67208

Engineer: Professional Engineering Consultants p.a.
 303 S. Topeka, Wichita, KS 67202



NOTE: All lots shall be graded to drain to public streets, public storm sewers, via drives, flumes, private storm sewers or other approved drainage facilities.

DSNR: OPER: CAL SCALE: 1" = 20'
 03/04/152-1/000 07-29-1994 103843