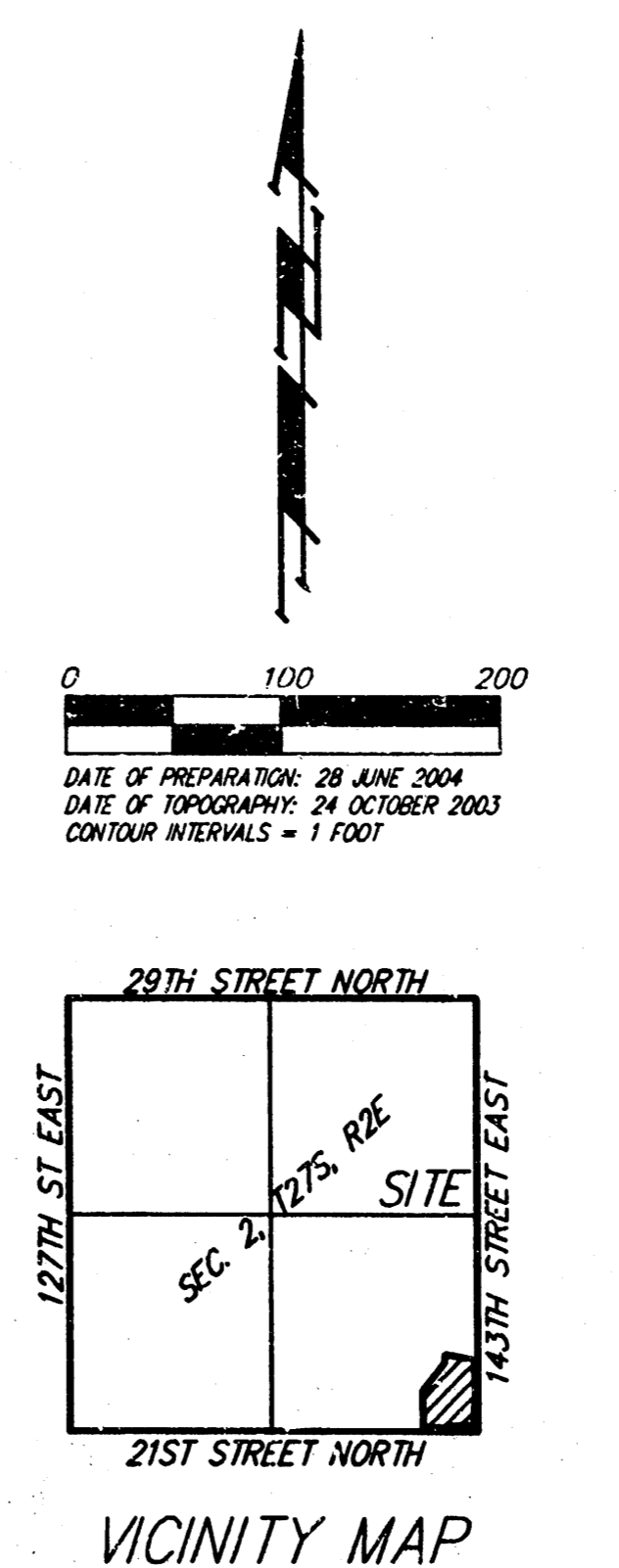
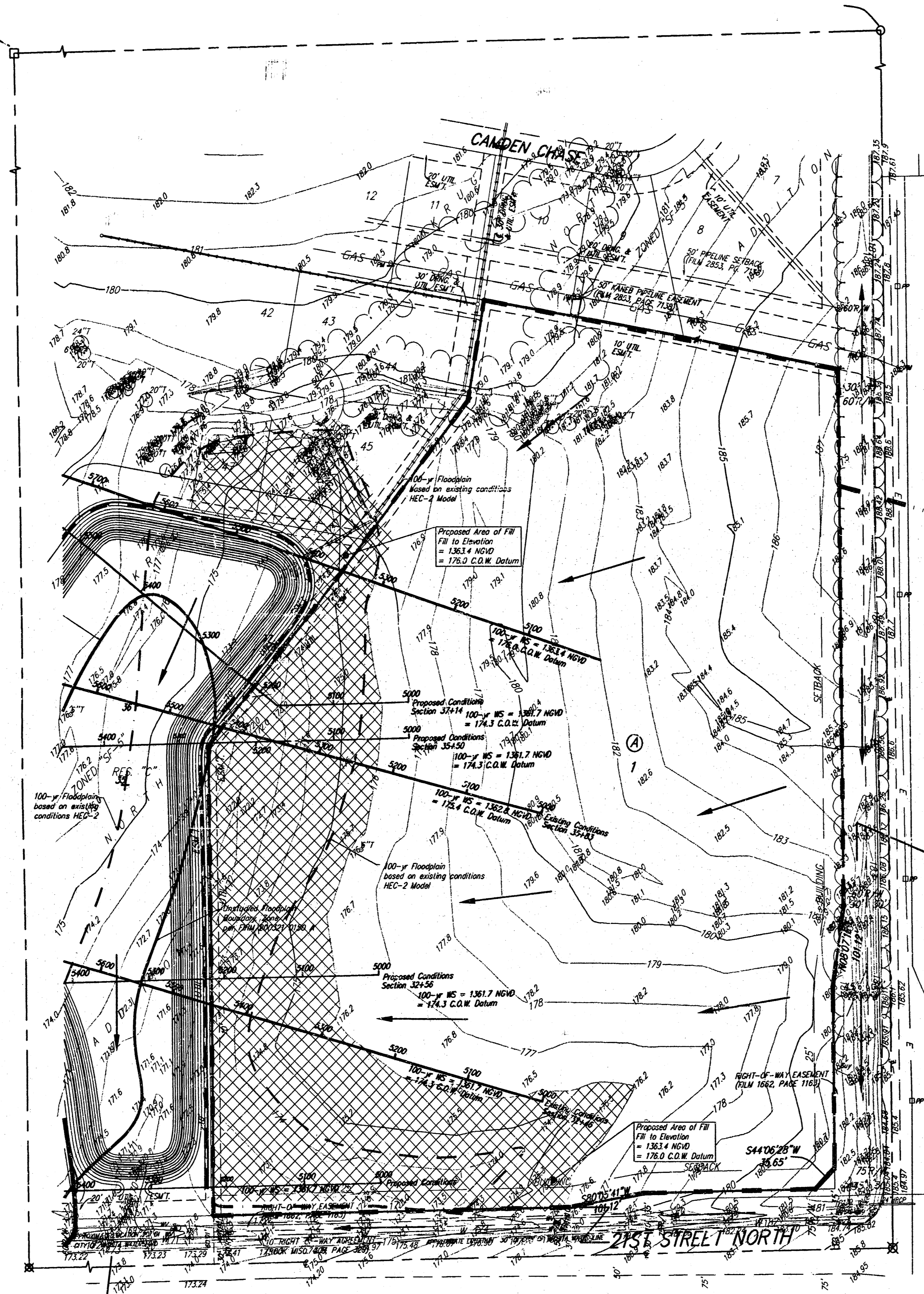


DRAINAGE PLAN EASTSIDE COMMUNITY CHURCH 2ND ADDITION WICHITA, SEDGWICK COUNTY, KANSAS



- = #4 REBAR W/ "BAUGHMAN" CAP (FOUND)
 - = #4 REBAR W/ "BAUGHMAN" CAP (SET)
 - = BRASS MONUMENT MARKED "TIES" IN CONCRETE (FOUND)
 - ⊗ = 3/4" IRON (FOUND)
 - = #6 REBAR (FOUND)
-
- (M) = MEASURED
 - (D) = DESCRIBED
 - (P) = PLATTED
 - (C) = CALCULATED
 - (C-D) = CALCULATED PER DESCRIBED INFO.
-
- PP □ = Power Pole
 - FH○ = Fire Hydrant
 - OP ○ = Guy Pole
 - W- = Water Valve
 - PM Δ = Pipeline Marker
-
- BENCHMARK:
"C" CUT IN THE MIDDLE OF THE N. HEADWALL OF R.C.B.C. ON 21ST STREET NORTH.
1004.3' W & 22.1' N. OF THE SE COR. SET 14, SEC. 2, TWP. 27-S, R-2-E. ELEV. = 173.23 CITY DATUM (1360.63 NGVD29)

143RD ST. EAST
LAZARIUS, ALVIN A.
14622 E. 21ST N.
WICHITA, KS 67220
ZONED "RR"

KRUG, PHILLIS ESTATE
ATOM DRAKE ZONED "SF-20"
7001 LARKSPUR LANE
MIDDLETOWN, OH 45044

Notes: The detention pond designed for the Krug North Addition was intended to allow drainage from this property.

A permit application has been filed with The Kansas Department of Agriculture, Division of Water Resources for channel change, floodplain fill, and appropriations.

The Army Corps of Engineers was also contacted regarding the proposed drainage improvements.

After major earthwork activities are completed, an application will be submitted to FEMA for a Letter of Map Revision (LOMR).

A minimum building pad will be established on this plot at the time of final approval.