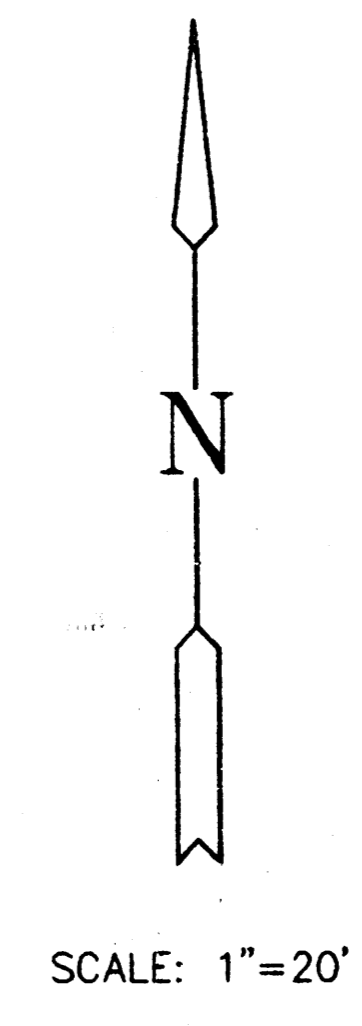
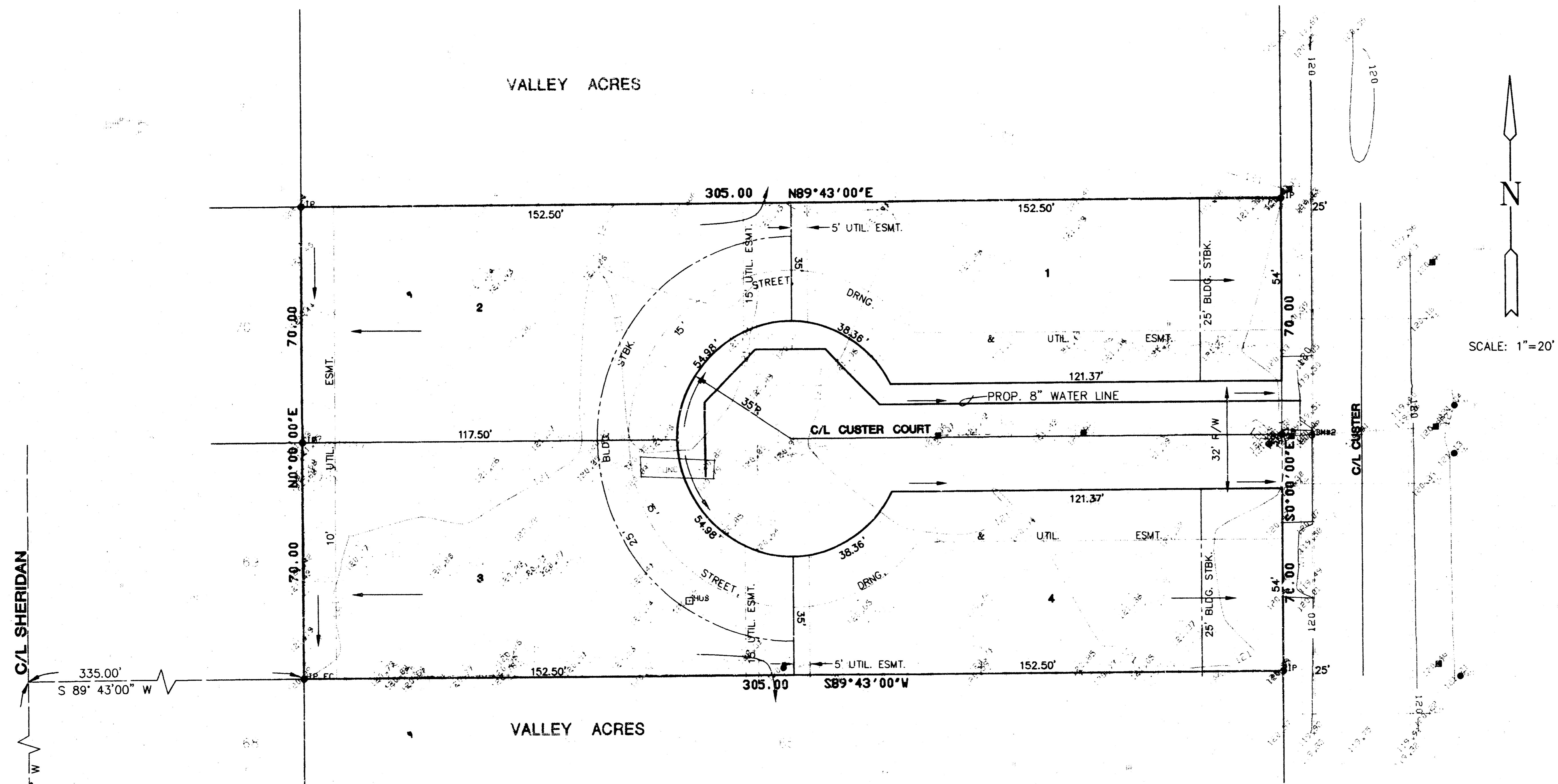


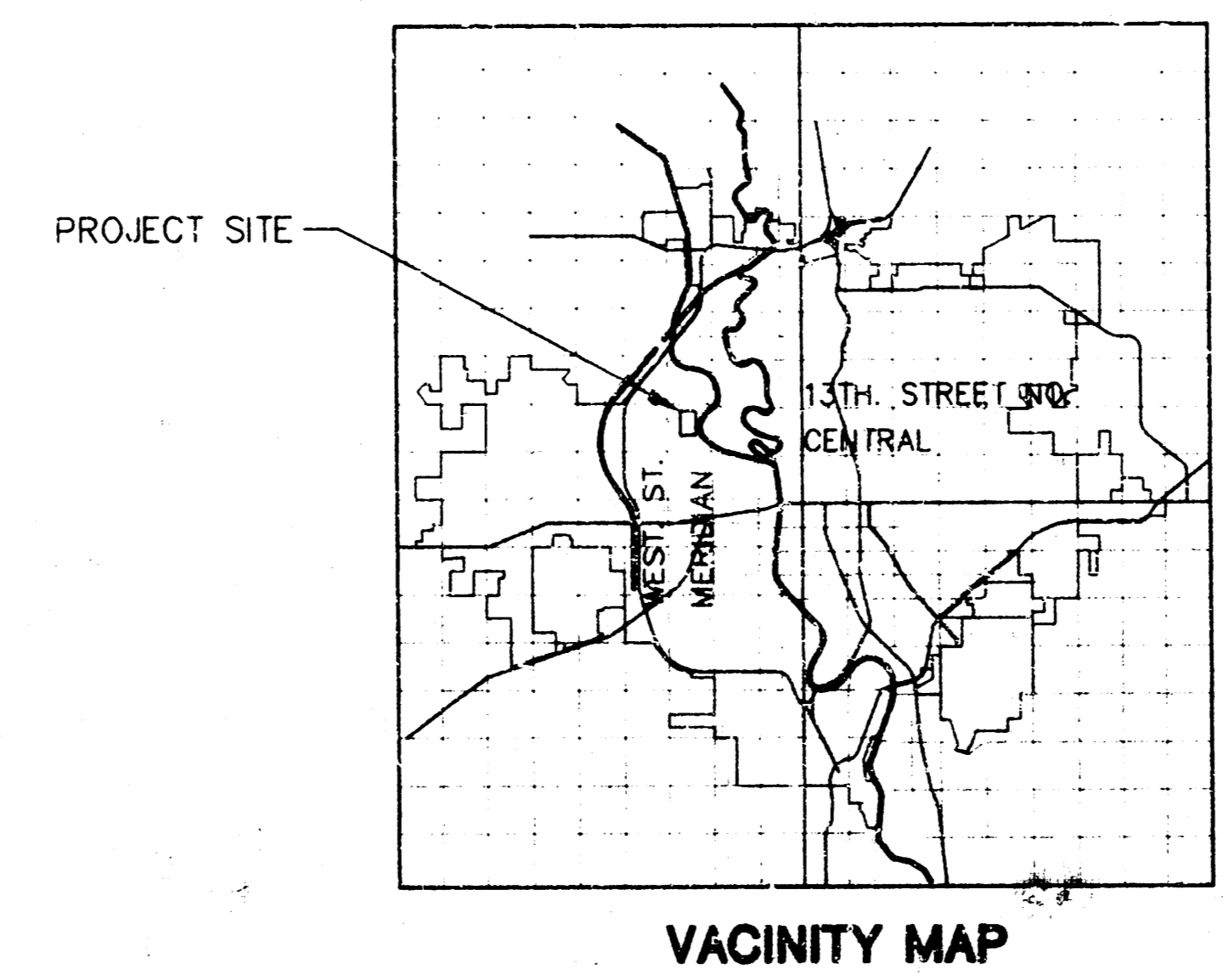
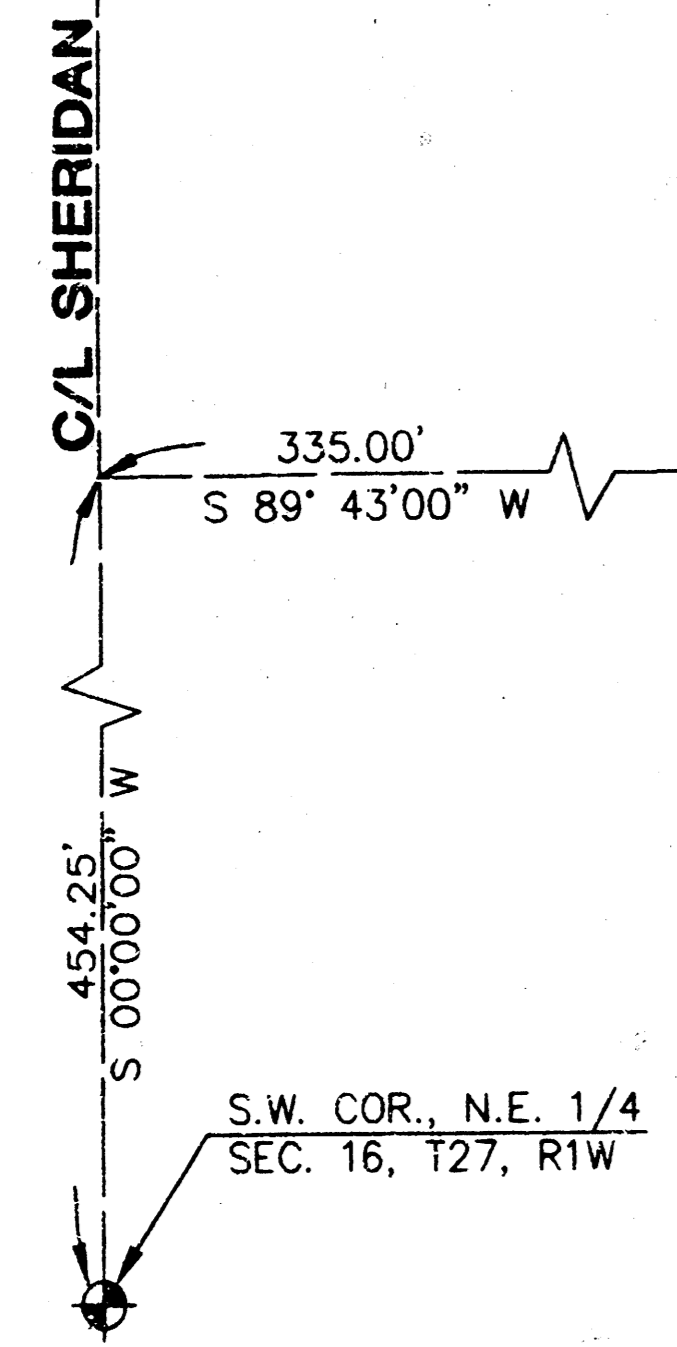
# EBERSOLE ADDITION

## AN ADDITION TO WICHITA, SEDGWICK CO, KANSAS



- LEGEND**
- ⊙ — STORM SEWER MANHOLE
  - — WATER METER
  - ⊙ — SAN SEWER MANHOLE
  - — KG&E BOX
  - — PROPERTY PIN
  - — LIGHT POLE
  - — GUARD POST
  - — SIGN
  - — POWER POLE
  - ⊠ — TELEPHONE RISER
  - — CLEANOUT
  - — GAS METER
  - ⊙ — FIRE HYDRANT
  - — GAS LINE
  - — FENCE
  - — SANITARY SEWER LINE
  - — STORM SEWER LINE
  - — TELEPHONE LINE
  - — WATER VALVE
  - — OVERHEAD POWER

- BM 1 SQUARE CUT ON TOP OF CURB AT THE NORTH END OF THE NORTHWEST RETURN AT 11TH STREET & CUSTER ELEV. = 120.60
- BM 2 SQUARE CUT ON TOP OF WEST CURB OF CUSTER 230 FEET SOUTH OF CL OF 11TH STREET ELEV. = 120.10
- TOP OF MANHOLE = 121.08  
 FL IN E & S = 112.80  
 FL OUT W = 112.75



	<b>DRAINAGE &amp; UTILITY CONCEPT</b>	Design: GJA Drawn by: WJL Checked by:
		Date: Job no.: G-1000000000 Sheet:
MID-KANSAS ENGINEERING CONSULTANTS INC. 3500 NORTH ROCK ROAD BUILDING #800 WICHITA, KANSAS 67226		(316) 636-5566

