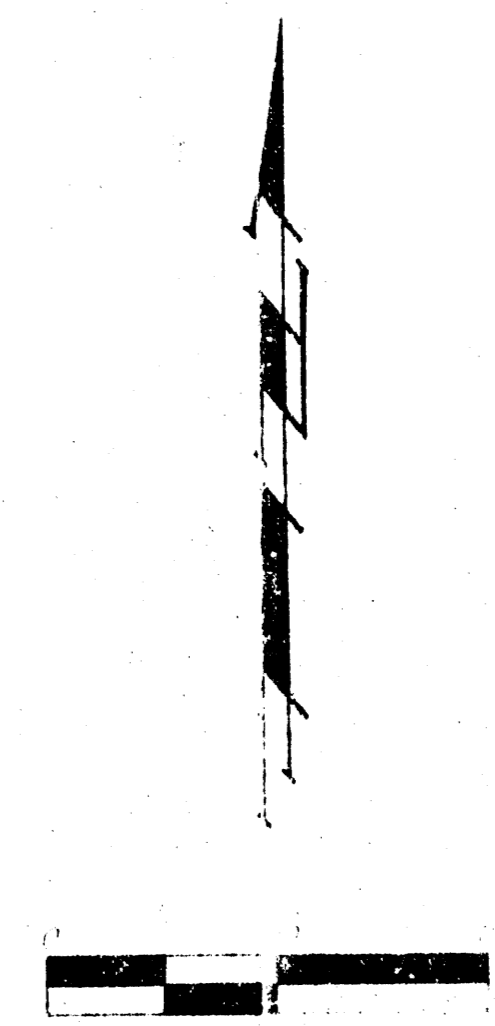
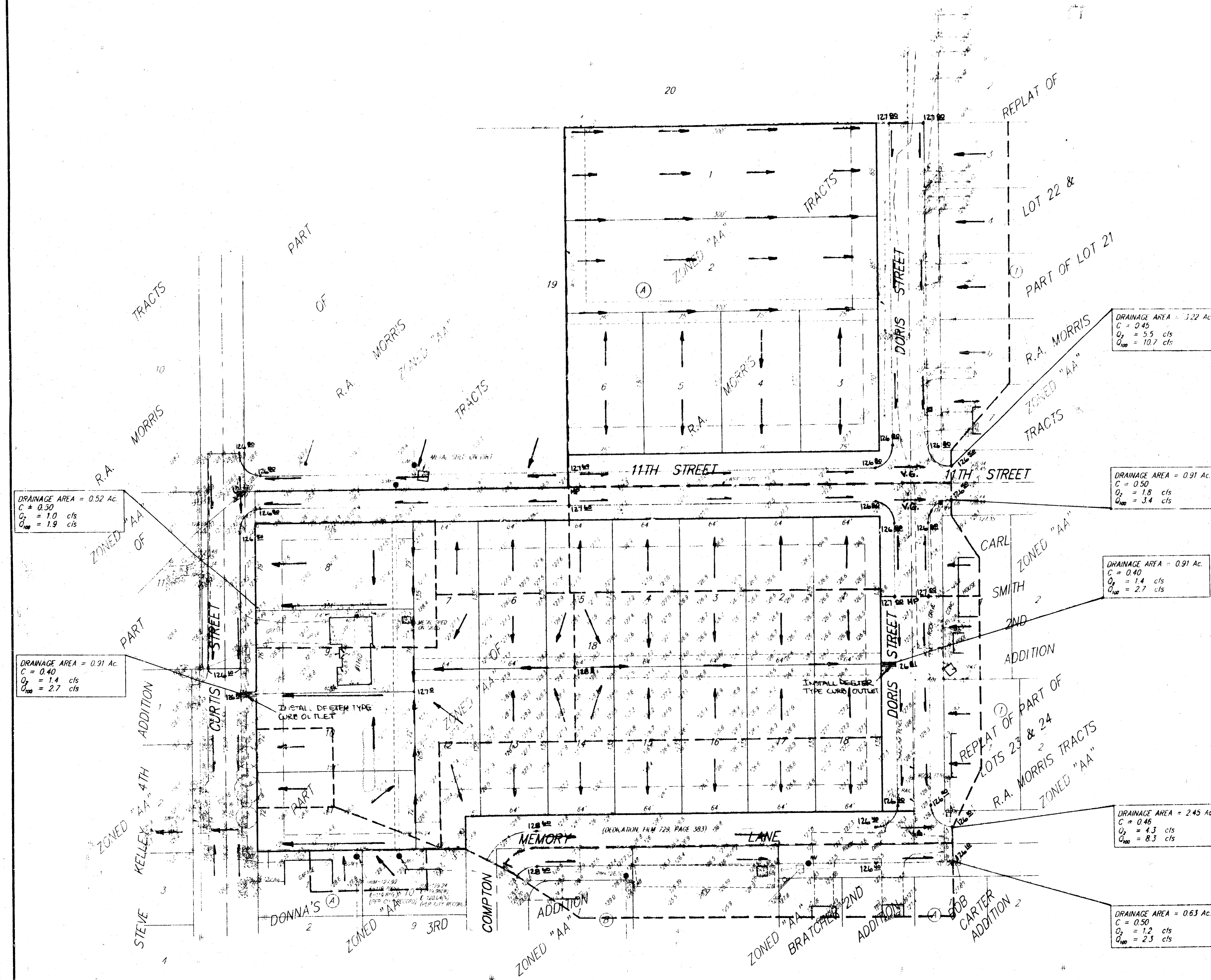


DRAINAGE PLAN

ECK 4TH ADDITION

WICHITA, SEDGWICK COUNTY, KANSAS

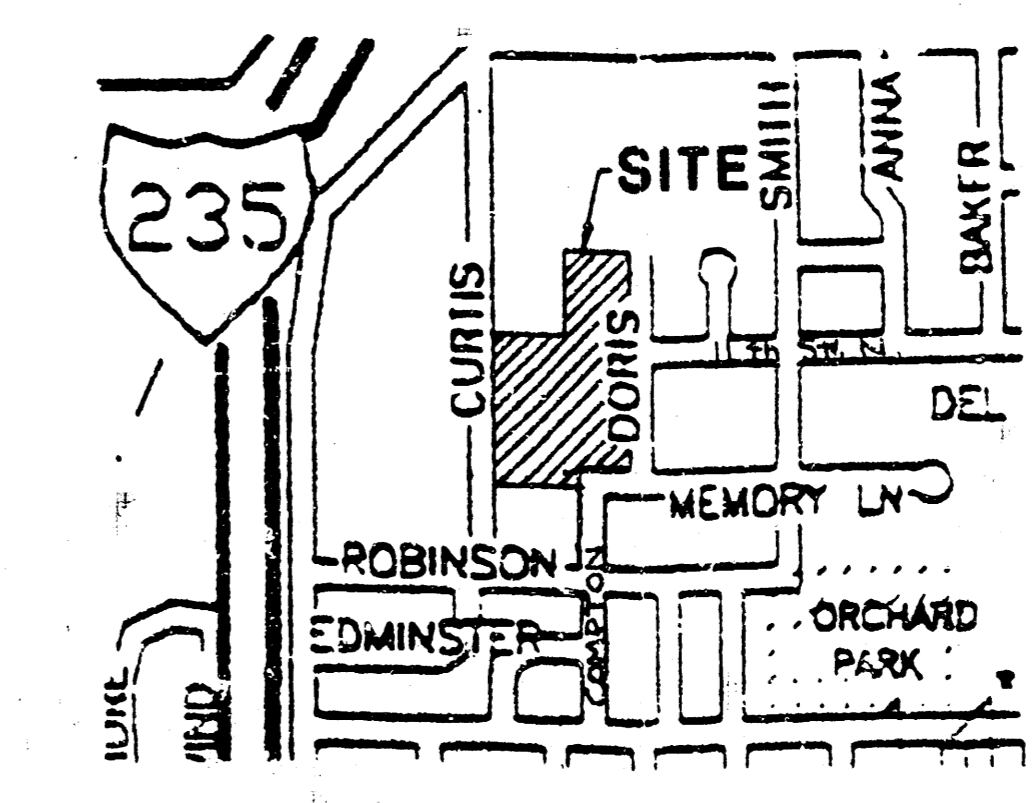


LEGAL DESCRIPTION:
 A REPLAT OF ALL OF LOT 18 AND THE 1/2 OF LOT 12,
 R.A. MORRIS TRACTS, SEDGWICK COUNTY, KANSAS.

OWNER:
 MATT ECK
 5512 W. CENTRAL
 WICHITA, KS 67212
 PH. 316-942-7402

BENCHMARK:
 CURTIS AND 13TH STREET
 CITY OF WICHITA BENCHMARK DISC. C OF CURTIS EXTENDED,
 2' SOUTH OF SOUTH PROPERTY LINE 1-235 R/W
 21' WEST OF POLE LINE SOUTH EXTENDED
 74' NORTH NORTHWEST OF STREET LIGHT POLE
 68' WEST OF CHAINLINK FENCE CORNER
 ELEV. = 129.152 (CITY SURM)

NOTE: ALL SPOT ELEVATION ON PROPOSED PAVING
 AND BACKLOT DRAINAGEWAYS ARE FLOW
 LINE ELEVATIONS.



MAR. 4, 1996
 JAN. 20, 1996

