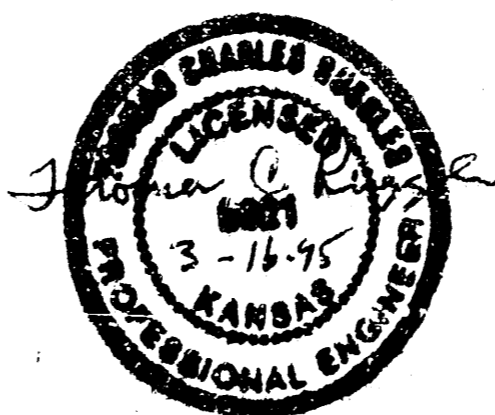
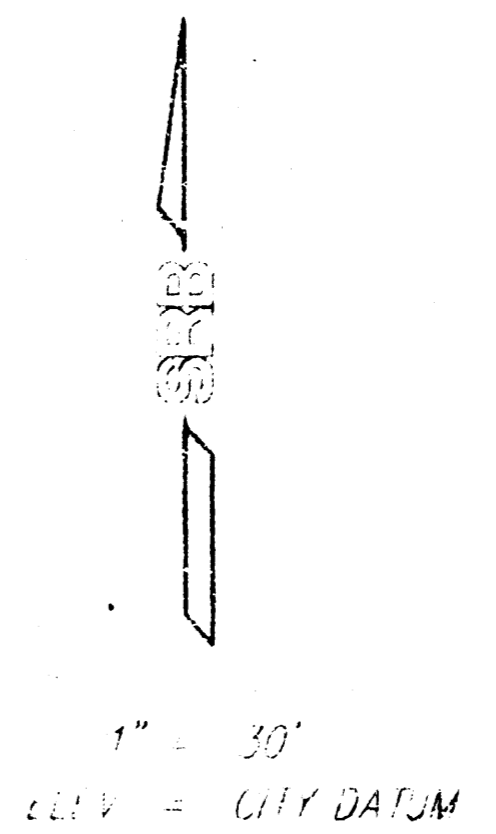


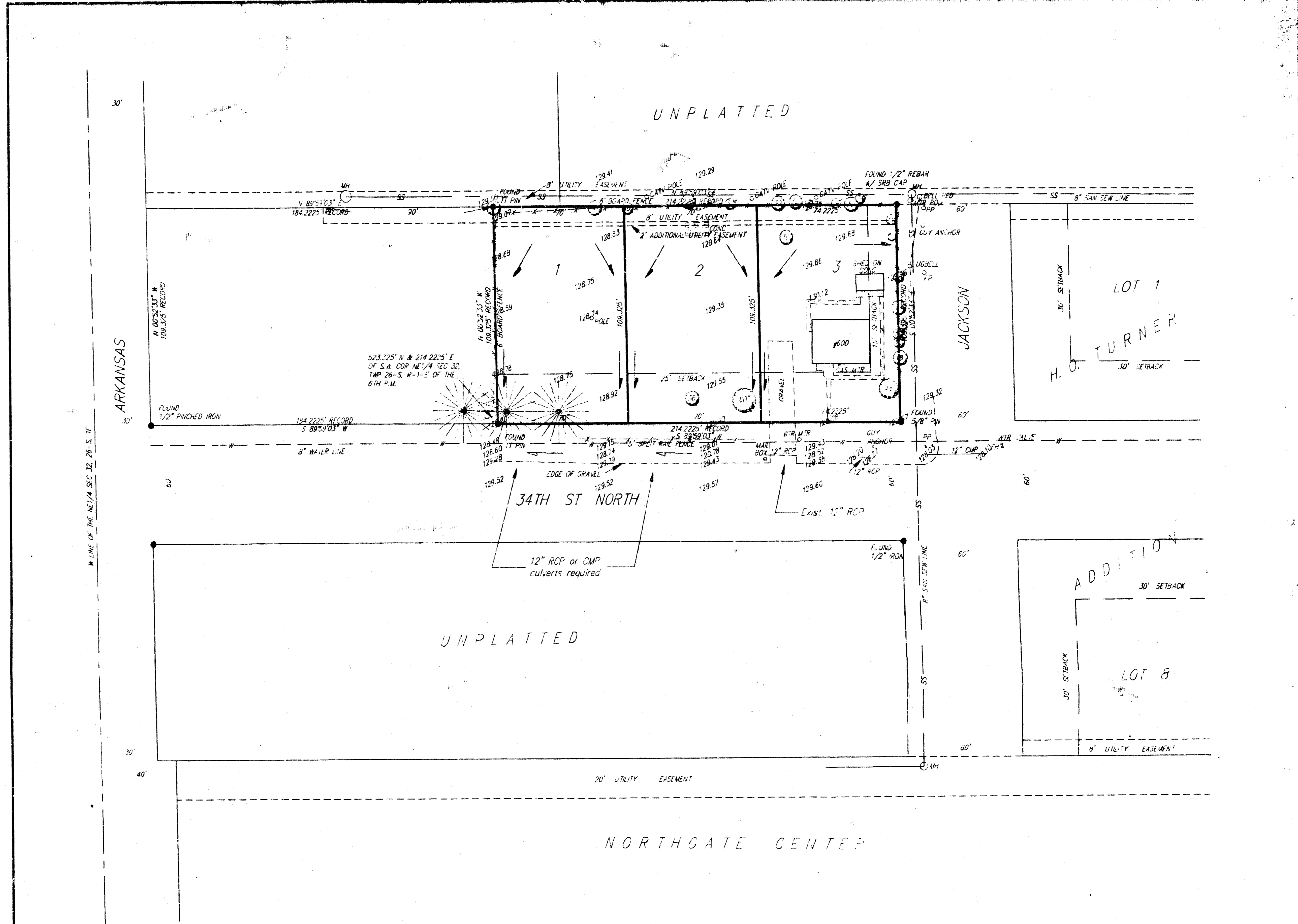
LOT GRADING PLAN
D. EDWARDS ADDITION

WICHITA, SEDGWICK COUNTY, KANSAS

DESIGN MARK
 1/4" = 1' HORIZONTAL STANDARD
 1/8" = 1' VERTICAL STANDARD
 1/4" = 1' HORIZONTAL STANDARD
 1/8" = 1' VERTICAL STANDARD
 1/4" = 1' HORIZONTAL STANDARD
 1/8" = 1' VERTICAL STANDARD



SRB 924 NORTH MAIN 316-264-8008
 WICHITA, KANSAS 67203 FAX 264-4621
SAVOY, RUGGLES & BOHM, P.A.
 ENGINEERING & SURVEYING



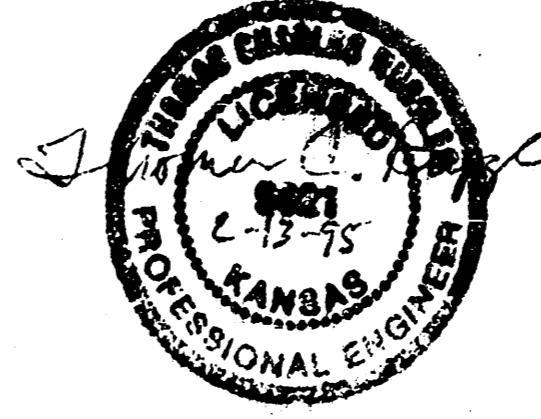
DRAINAGE PLAN D. EDWARDS ADDITION

WICHITA, SEDGWICK COUNTY, KANSAS

D.A. = 0.18 Ac (Typical 3 lots)
 Runoff calculated by Rational Method:
 $Q = CIA$
 $C_2 = 0.45$ $C100 = 0.62$
 $T_c = 15$ minutes
 $I_2 = 3.83"/hr$ $I100 = 7.37"/hr$
 $Q_2 = 0.31cfs$ $Q100 = 0.82cfs$

STAKE MARK
 CITY OF WICHITA STANDARD DISC
 10" S & 22" E OF THE CENTER
 LINE OF 34th ST N & ARKANSAS
 ELEV = 1238.1 CITY DATUM
 ON SITE BENCH MARK
 1/2" SPAC N. S. FACE OF P.P. AT
 N.W. COR OF 34th ST N &
 JACKSON
 ELEV = 130.05 CITY DATUM

1" = 30'
 ELEV = CITY DATUM



SRB 924 NORTH MAIN 316-264-8008
 WICHITA, KANSAS 67203 FAX 264-4621
SAVOY, RUGGLES & BOHM, P.A.
 ENGINEERING & SURVEYING

RLA 1256P 10/80

2-12-88