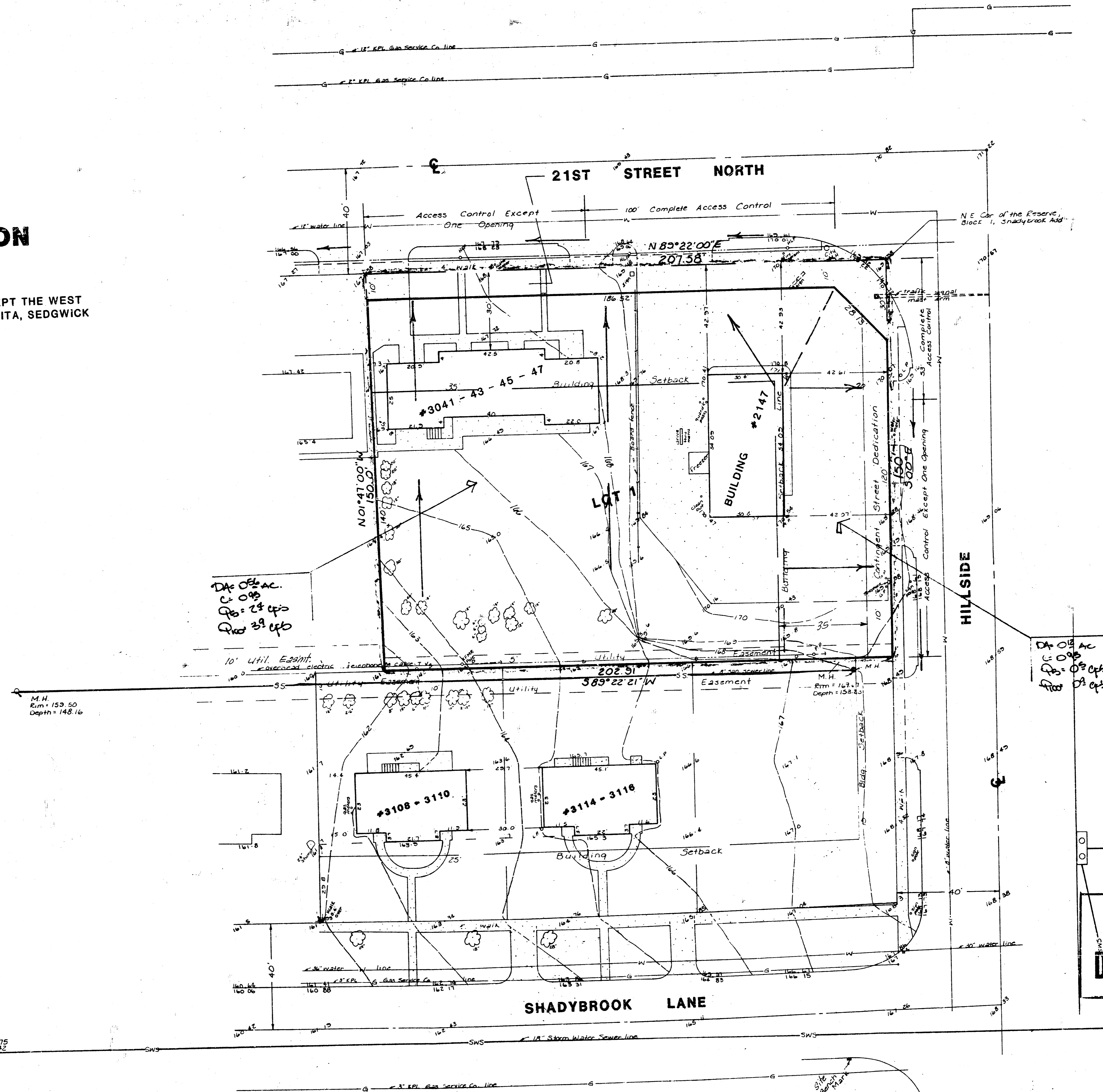


REVISED
SKETCH PLAT

ELIZABETH'S ADDITION

BEING A REPLAT OF THE RESERVE, BLOCK 1, EXCEPT THE WEST
392 FEET THEREOF, SHADYBROOK ADDITION, WICHITA, SEDGWICK
COUNTY, KANSAS

OWNERS: JULIUS SMITH
LEE LUNSTRA



**APPROVED
DRAINAGE PLAN**

Bench Mark:
□ cut on top of curb South
side of Shadybrook & Hillside,
at end of return.
Elev. = 167.23 City Datum

M.H.
Rim = 157.75
R.L. = 150.42

DRAINAGE PLAN

Revised MAR 23, 91
BAUGHMAN COMPANY, P.A.
SURVEYING & ENGINEERING
316/262-7271 • 315 ELLIS • WICHITA, KANSAS 67211 12-28-90

FILMED FROM THE BEST
AVAILABLE COPY.....