

DRAINAGE PLAN ERNEST JORDAN ADDITION

WICHITA, SEDGWICK COUNTY, KANSAS

LEGAL DESCRIPTION:

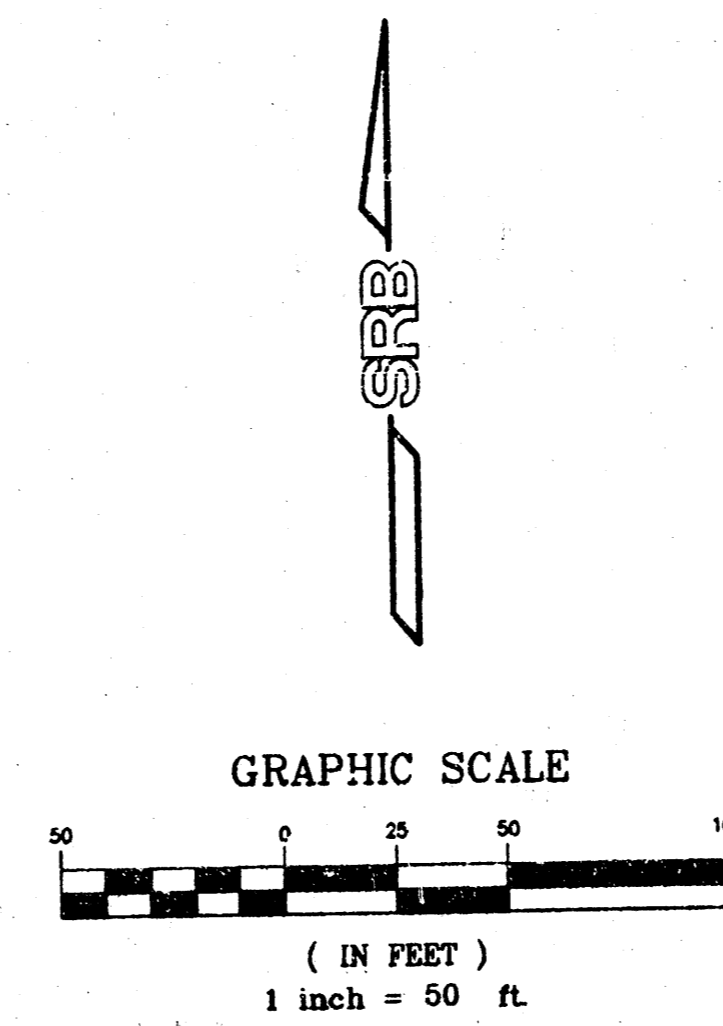
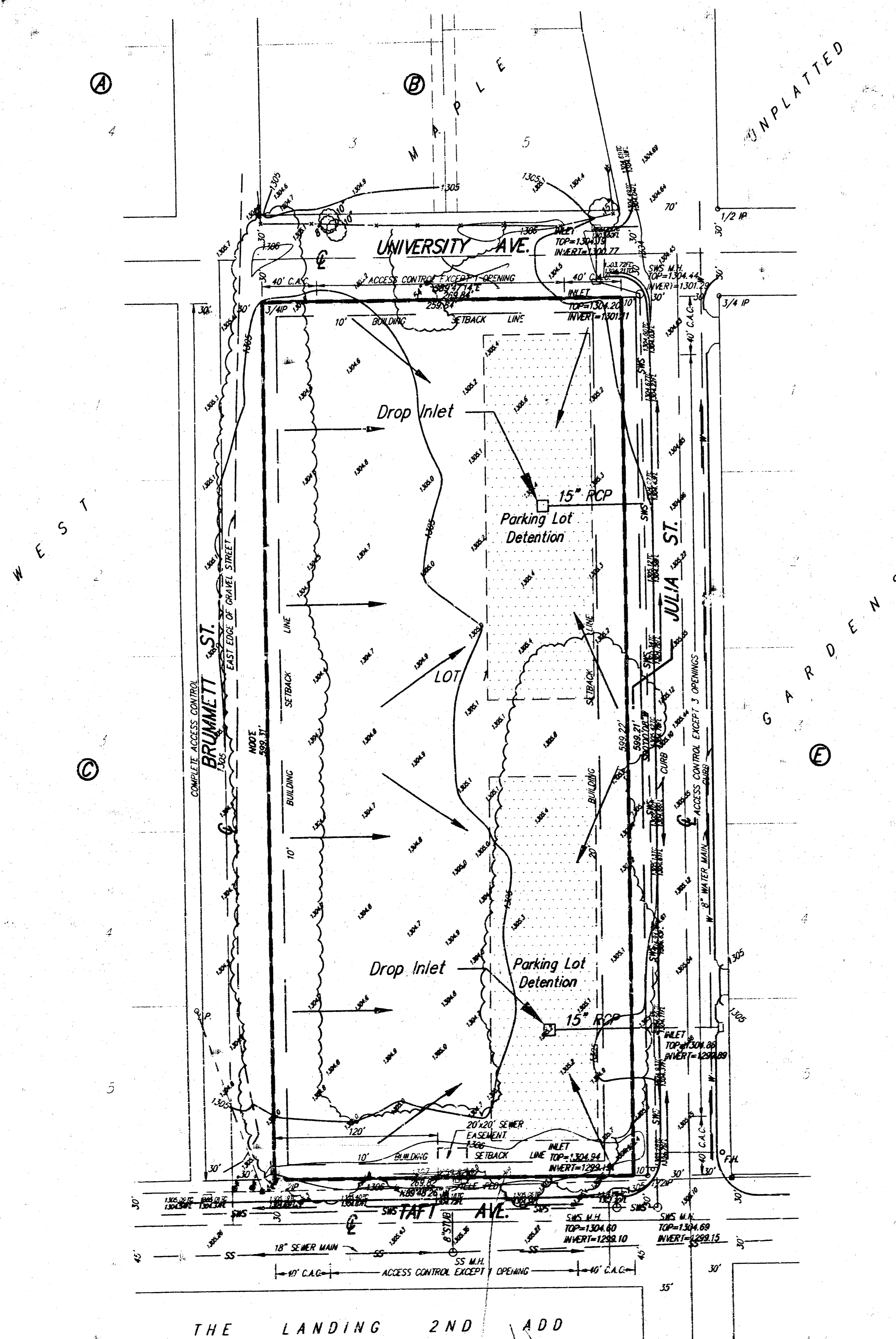
Lots 1, 2, 3, 4, 5, 6, 7, 8, 9 and 10, Block D, West Maple Gardens, Sedgwick County, Kansas.

OWNER:

Ernest A. Jordan, Sr., Trustee
of the Doris I. Jordan Trust and of the Ernest A. Jordan, Sr. Trust
32 Friendship Lane
Newton, Kansas 67114

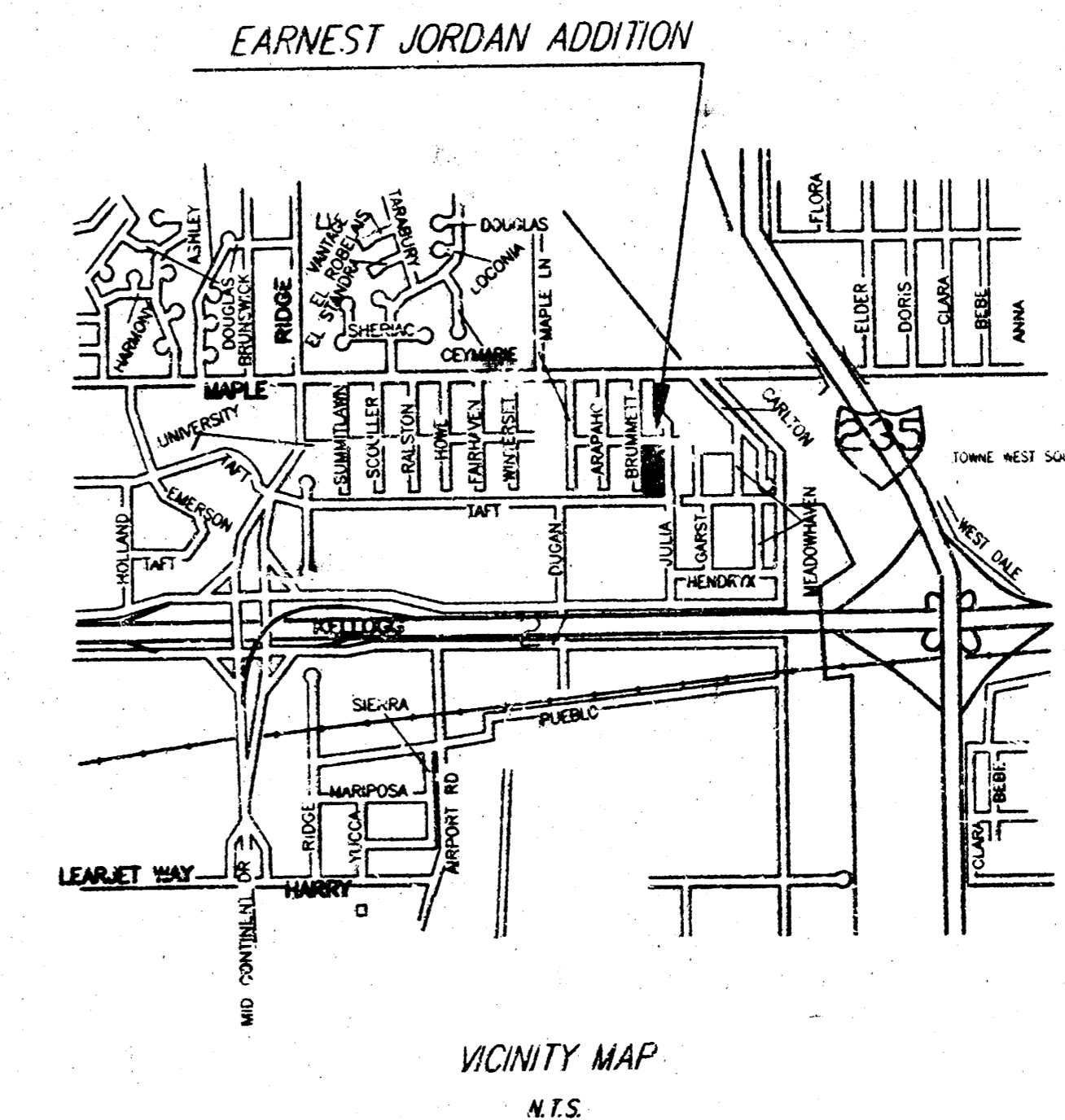
Ph. (316) 283-4079

GROSS AREA:
161,696.86 Sq. Ft.±
3.71 Acres±



BENCH MARK: CITY OF WICHITA STD DISC
30.8' S. & 52.3' W. OF CENTERLINE INTERSECTION
DUGAN ROAD & TAFT AVE.
ELEV.=1306.40 NGVD

- LEGEND**
- G = GAS MAIN
 - W = WATER MAIN
 - SS = SANITARY SEWER
 - SWS = STORM WATER SEWER
 - UGE = UNDER GROUND ELECTRIC
 - UGT = UNDER GROUND TELEPHONE
- ◻ TELE. PED. . . . TELEPHONE PEDSTAL
 - ◻ E.B. ELECTRIC BOX
 - G.M. GAS METER
 - W.M. WATER METER
 - W.V. WATER VALVE
 - F.H. FIRE HYDRANT
 - M.H. MONITOR HELL
 - C.O. CLEAN OUT
 - L.P. LIGHT POLE
 - POWER POLE
 - HIGH LINE POLE
 - GUY ANCHOR
 - 4 — SIGN
 - G.P. GUARD POST
 - SWS M.H. . . . STORM WATER SEWER MANHOLE
 - SS M.H. SANITARY SEWER MANHOLE



EXISTING	PROPOSED
Drainage Area = 3.58 Ac.	Drainage Area = 3.58 Ac.
Hydrologic Soil Type "B"	Hydrologic Soil Type "B"
$T_c = 15$ min.	$T_c = 15$ min.
$C_s = 0.18$	$C_s = 0.69$
$C_{100} = 0.37$	$C_{100} = 0.80$
$I_s = 4.56$ in.	$I_s = 4.56$ in.
$I_{100} = 7.37$ in.	$I_{100} = 7.37$ in.
$Q_s = 2.9$ cfs	$Q_s = 11.3$ cfs
$Q_{100} = 9.8$ cfs	$Q_{100} = 21.1$ cfs

DETENTION REQUIRED

Storage Volume = $(Q_{in} - Q_{all})(T_c)(0.5)(60 \text{ sec/min})(K)$
 $Q_{in} = 21.1$ cfs
 $Q_{all} = 9.8$ cfs
 $T_c = 15$ min.
 $K = 1.5$
 $SV = (21.1 - 9.8)(3)(15)(0.5)(60)(1.5)$
 $SV = 22,883 \text{ cu-ft}$
 $SV = 0.53 \text{ ac-ft}$

SRB 924 NORTH MAIN WICHITA, KANSAS 67203
 316-264-8008 FAX 264-4621
 http://www.srb.com E-mail: srb@srbc.com

SAVOY, RUGGLES & BOHM, P.A.
 ENGINEERING & SURVEYING

DWG FILE: Drainage Plan
 PROJECT NO. 0160202P

Oct. 2, 2007