

PROJECT: Ernie & Lorie Addition DATE: June 28, 1983

NO. NO. \_\_\_\_\_ COPIES TO \_\_\_\_\_

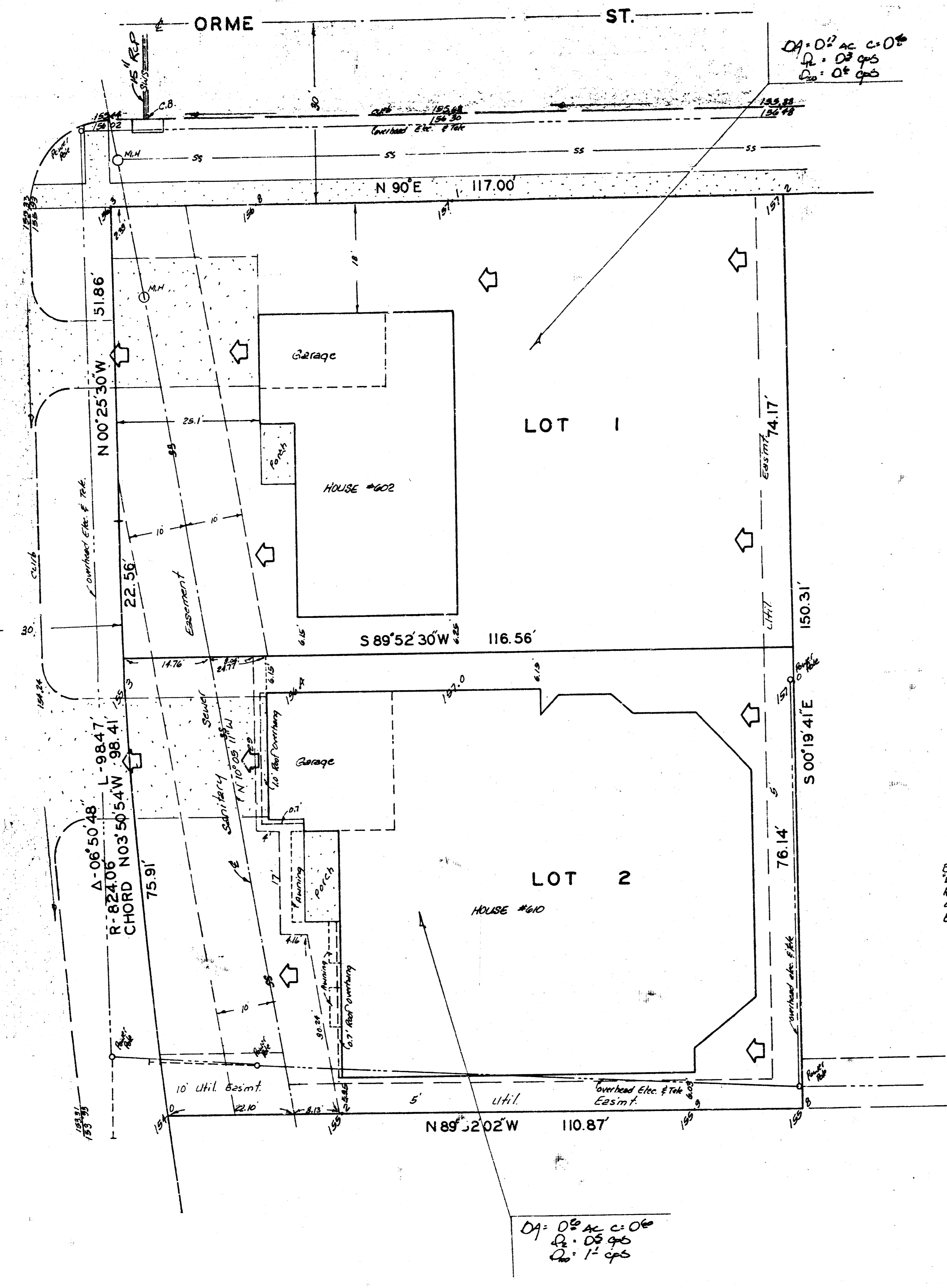
TO: Chris Breitenstein

FROM: N. Brent Wooten

REFERENCE: Drainage Plan

Final Plat is scheduled for Subdivision for July 7, 1983.  
Lots will be residential with runoff factor = 0.4 & 0.6 (Lot 2)  
Lots will drain west to Fabrique which drains south. Fabrique is paved. A storm sewer and inlet exist on the corner at Orme as indicated.

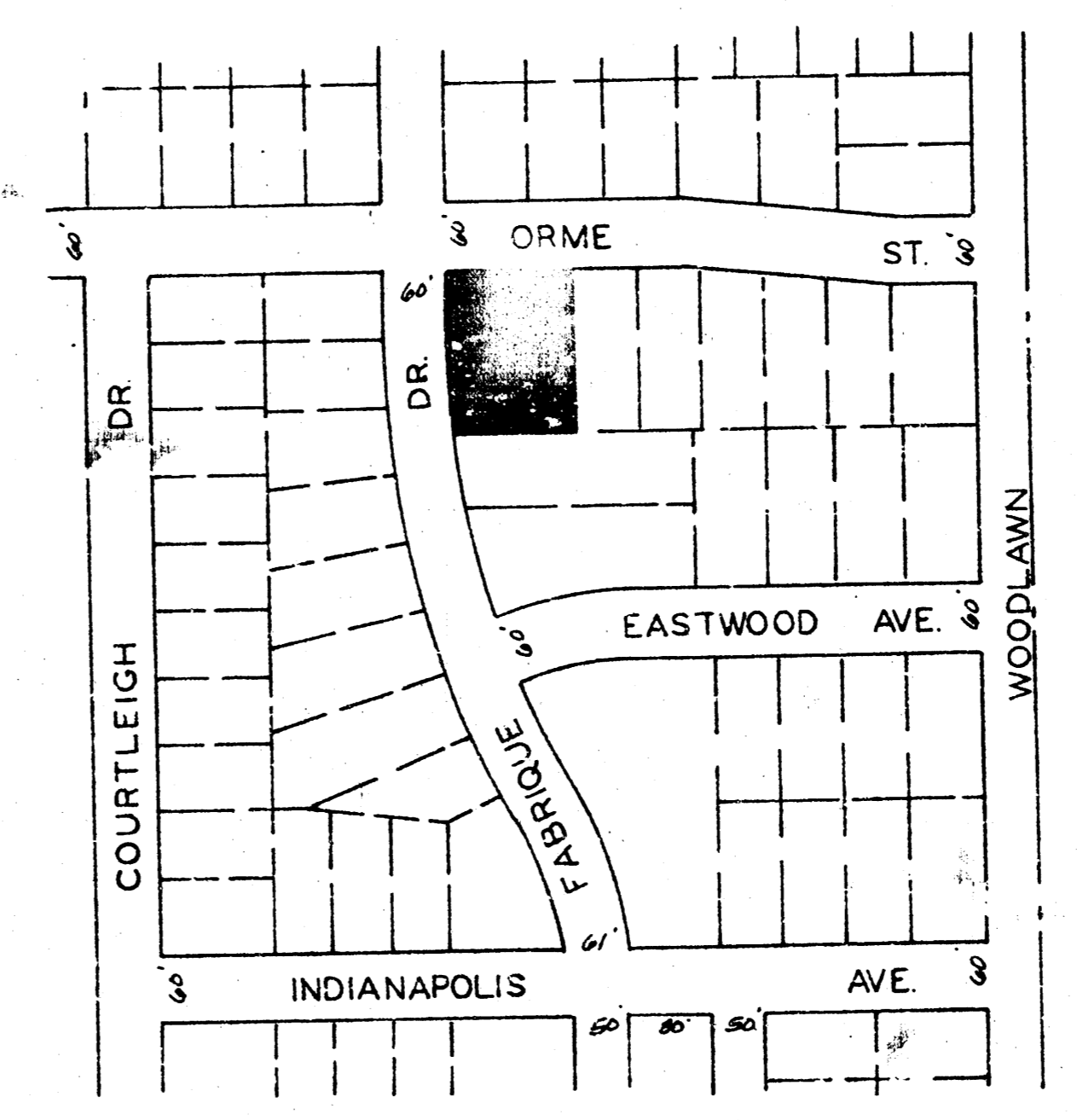
drainage plan



SKETCH PLAT  
ERNIE AND LORIE ADDITION

REPLAT OF LOTS 7 AND 8, REPLAT OF EXCEPTION  
IN A. J. CHRISTMAN THIRD ADDITION TO WICHITA,  
KANSAS.

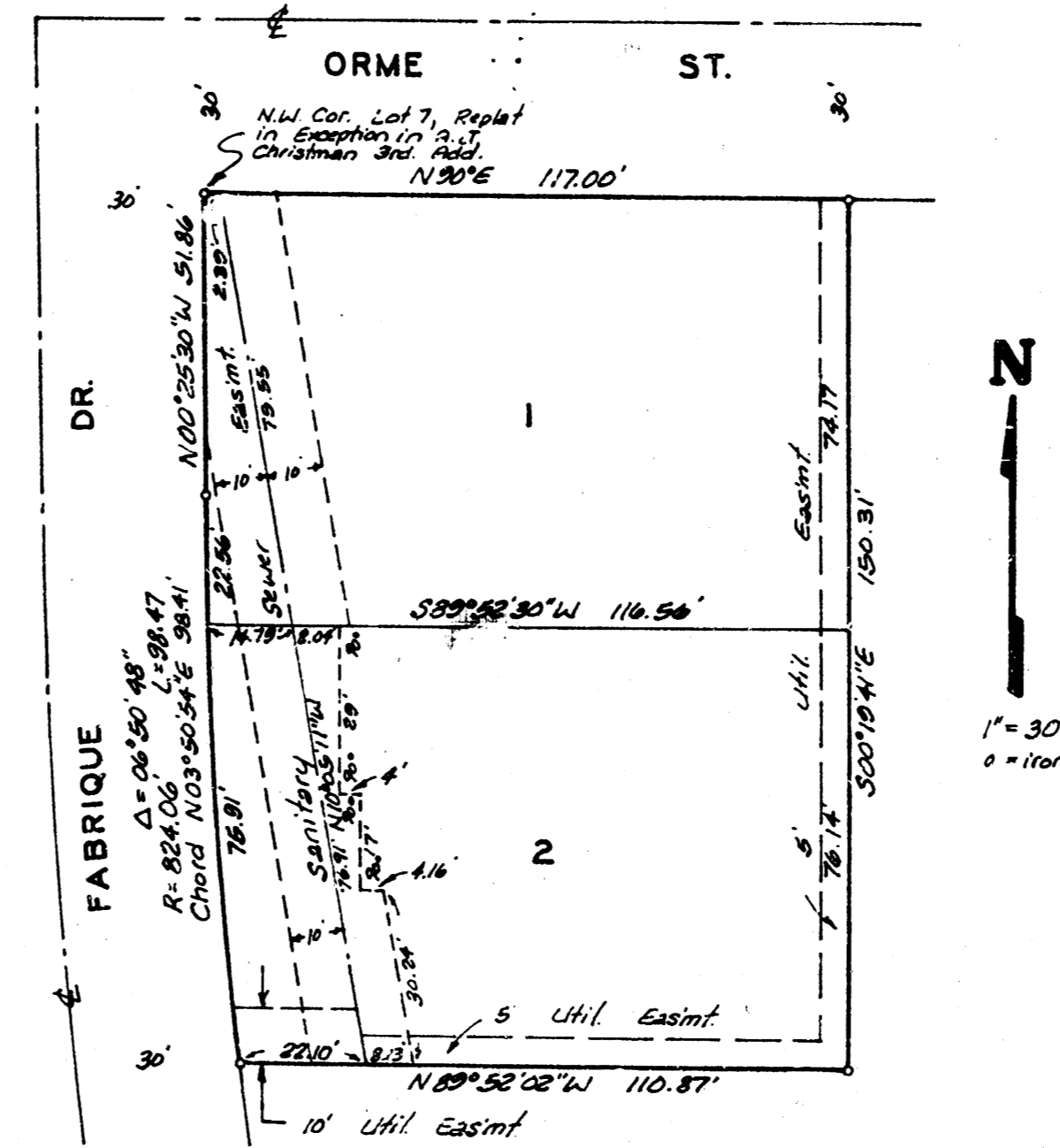
ERNIE & LORIE DOYON



ERNIE AND LORIE ADDITION  
(DRAINAGE)

# ERNIE AND LORIE ADDITION

WICHITA, KANSAS.



This plat of ERNIE AND LORIE ADDITION, Wichita, Kansas, has been submitted to and approved by the Wichita-Sedwick County Metropolitan Area Planning Commission, Wichita, Kansas, this day of \_\_\_\_\_, 1983.

Wichita-Sedwick County Metropolitan Area Planning Commission

\_\_\_\_\_  
Chairman  
\_\_\_\_\_  
Secretary

This plat approved and all dedications shown hereon accepted by the Board of Commissioners of the City of Wichita, Kansas, this day of \_\_\_\_\_, 1983.

\_\_\_\_\_  
Mayor  
\_\_\_\_\_  
City Clerk

This plat approved and all dedications shown hereon accepted by the Board of Commissioners, Sedwick County, Kansas, this day of \_\_\_\_\_, 1983.

\_\_\_\_\_  
Chairman  
\_\_\_\_\_  
Commissioner  
\_\_\_\_\_  
Commissioner  
\_\_\_\_\_  
County Clerk

Entered on transfer record this \_\_\_\_\_ day of \_\_\_\_\_, 1983.

\_\_\_\_\_  
County Clerk

State of Kansas } S.S. We, Baughman Company P.A., Surveyors in and for Sedwick County, Kansas, do hereby certify that we have surveyed and plotted "ERNIE AND LORIE ADDITION", Wichita, Kansas and that the accompanying plat is a true and correct exhibit of the property surveyed described as and being a replat of Lots 1 and 2, Replat of Exception in A.J. Christman, Third Addition to Wichita, Kansas, All being situated in the NE 1/4 of Sec. 25, Twp. 27S, R. 1E of the 6th P.M., Sedwick County, Kansas. Easements being vacated by virtue of K.S.A. 12-512(b).

Baughman Company, P.A.

Date \_\_\_\_\_  
\_\_\_\_\_  
Surveyor

Know all men by these presents that we, the undersigned, have caused the land in the foregoing certificate to be platted into lots to be known as "ERNIE AND LORIE ADDITION", Wichita, Kansas. The utility easements are hereby granted as indicated for the construction and maintenance of all public utilities.

\_\_\_\_\_  
Ernie Doyon  
\_\_\_\_\_  
Lorie Doyon

State of Kansas } S.S. This is to certify that this Sedwick County plat has been filed for record in the office of the Register of Deeds, this \_\_\_\_\_ day of \_\_\_\_\_, 1983, at \_\_\_\_\_ o'clock \_\_\_\_\_ M., and is duly recorded.

\_\_\_\_\_  
Register of Deeds  
\_\_\_\_\_  
Deputy

State of Kansas } S.S. The foregoing instrument was acknowledged before me this \_\_\_\_\_ day of \_\_\_\_\_, 1983, by Ernie Doyon and Lorie Doyon, his wife.

My Appt. Exp. \_\_\_\_\_  
\_\_\_\_\_  
Notary Public