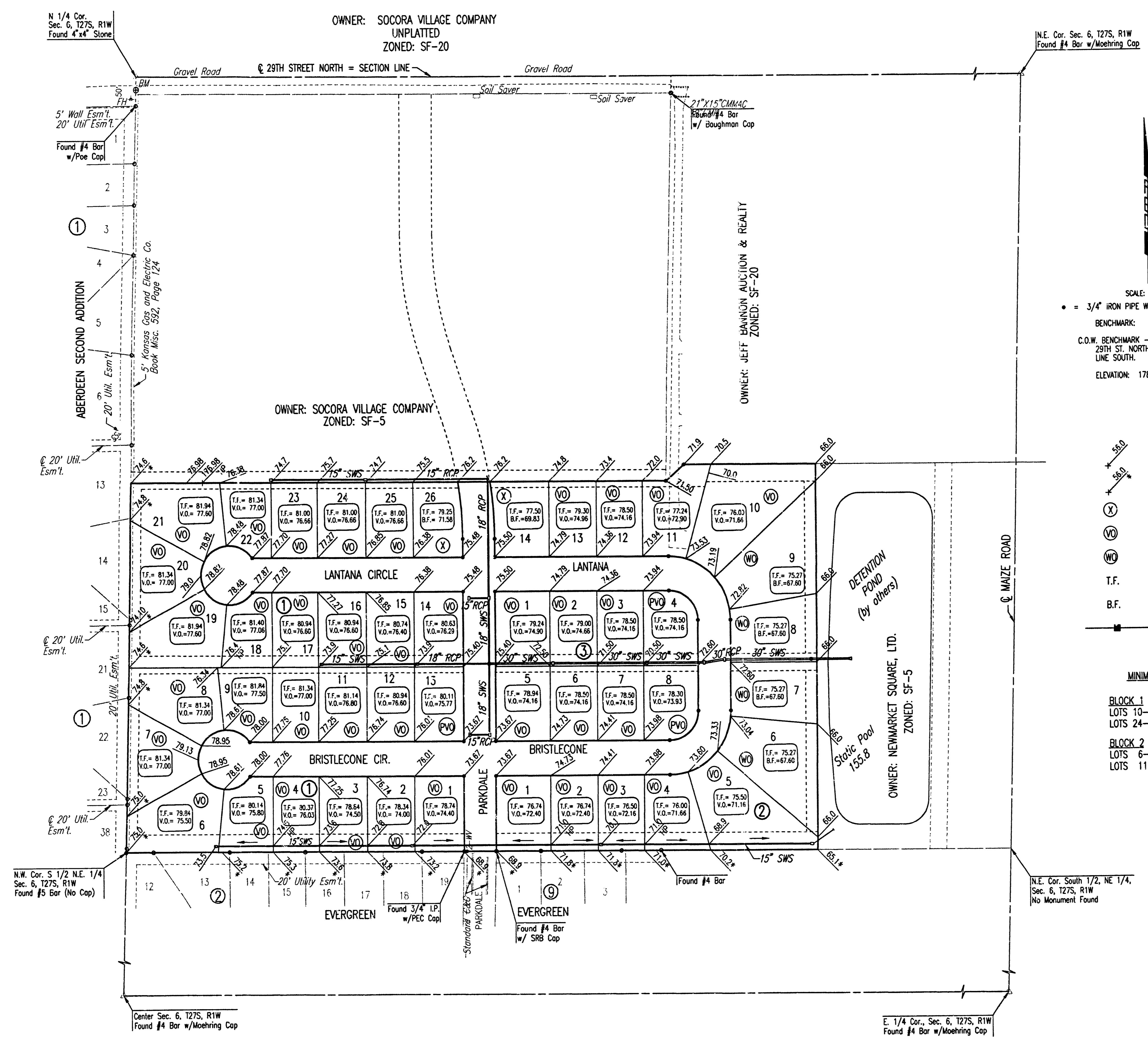


# FOUR CORNER PLAN FOR EVERGREEN 4TH

AN ADDITION TO WICHITA, SEDGWICK COUNTY, KANSAS



N.E. Cor. Sec. 6, T27S, R1W  
Found #4 Bar w/ Moehring Cap

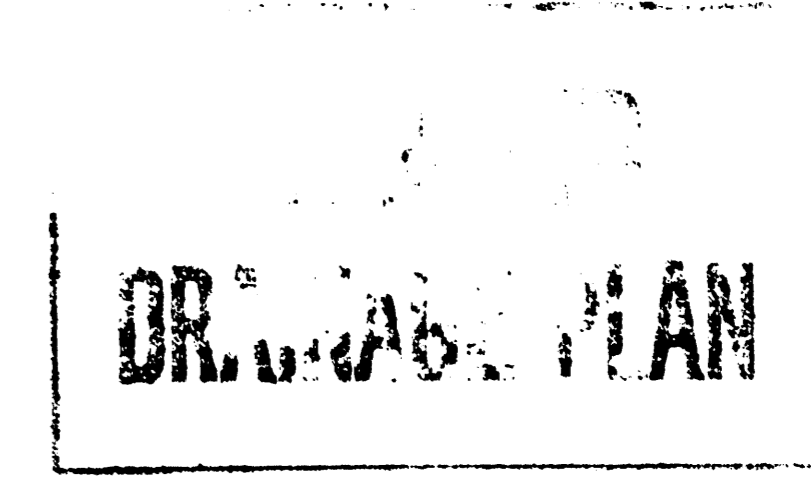
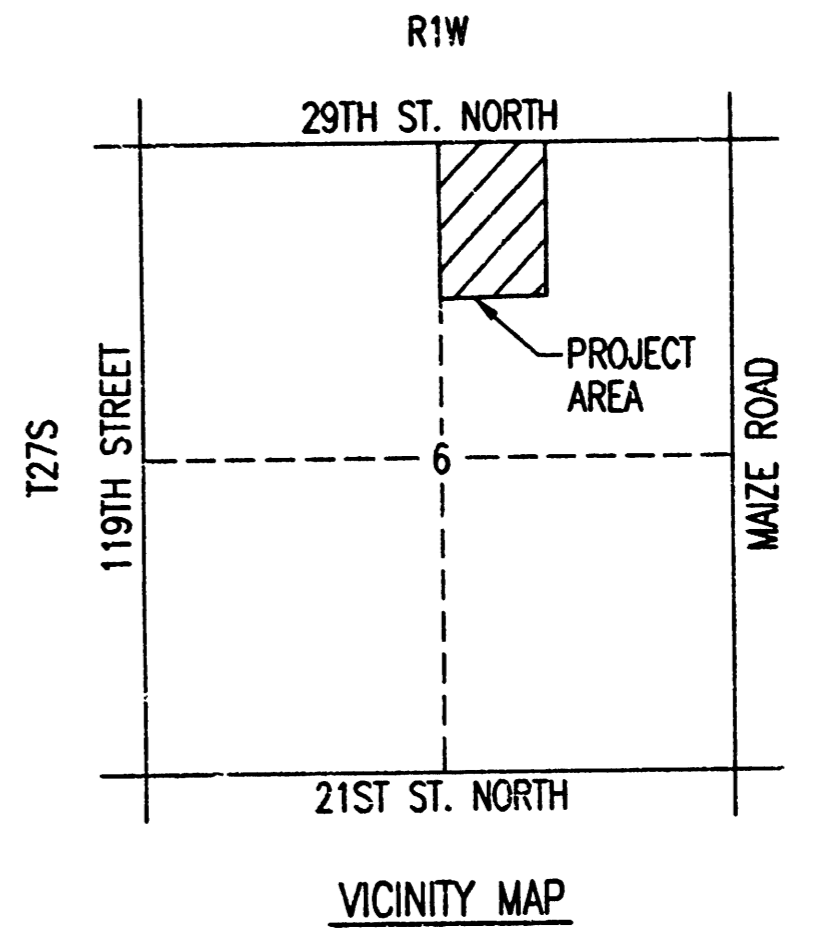
N 1/4 Cor.  
Sec. 6, T27S, R1W  
Found 4x4 Stone

SCALE: 1"=100'  
• = 3/4" IRON PIPE W/PEC CAP UNLESS OTHERWISE NOTED  
BENCHMARK:  
C.O.W. BENCHMARK - 0.5 MILES WEST OF MAIZE ROAD, ON  
29TH ST. NORTH, SOUTH RIGHT-OF-WAY, ON POLE  
LINE SOUTH.  
ELEVATION: 178.29 CITY DATUM

- LEGEND**
- ▲ SPOT ELEVATION
  - MATCH EXISTING ELEVATION
  - ⊗ STD. BASEMENT
  - ⊙ VIEW-OUT BASEMENT
  - ⊖ WALK-OUT BASEMENT
  - T.F. TOP OF FOUNDATION
  - B.F. BASEMENT FLOOR
  - STORM SEWER AND INLET

**MINIMUM OPENING**

BLOCK 1	
LOTS 10-17	170.40
LOTS 24-26	171.90
BLOCK 2	
LOTS 6-10	162.00
LOTS 11-14	171.90



REVISED 12/4/03

**Professional Engineering Consultants, P.A.**  
303 S. TOPEKA WICHITA, KANSAS 67202  
316-262-2691 • FAX 316-262-3003

**EVERGREEN 4th**

DSW: SW OPER: SAW SCALE: 1"=100.00  
 01/24/04 01:24:36 pm  
 C:\2002\02418\001.dwg 4CORNER 05-07-2004

1<sup>st</sup> REVIEW OCT  
ON 8 JUN 2004  
Rat CAP MARKO 8 JUN 2004