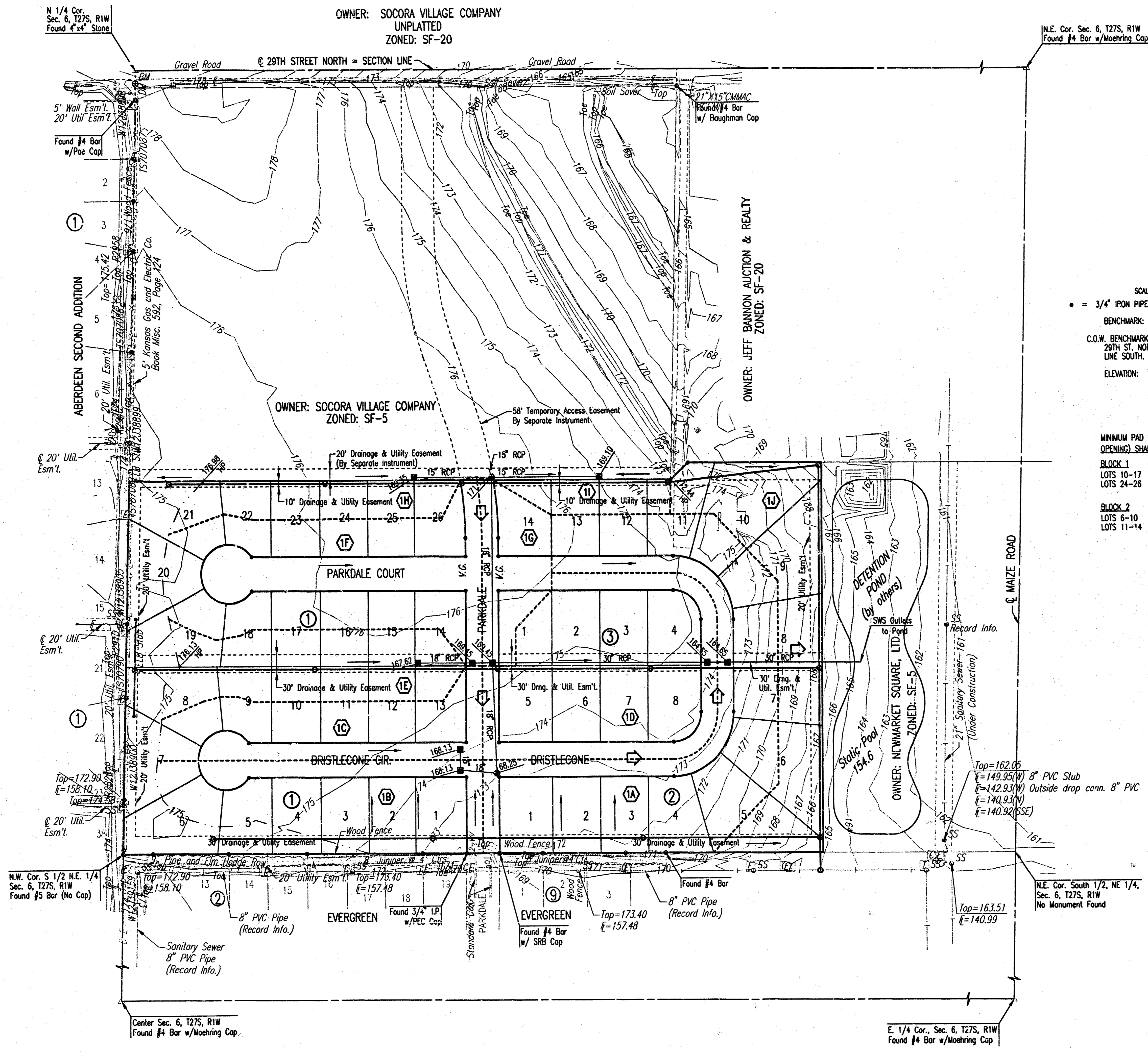


# DRAINAGE PLAN FOR EVERGREEN 4TH AN ADDITION TO WICHITA, SEDGWICK COUNTY, KANSAS



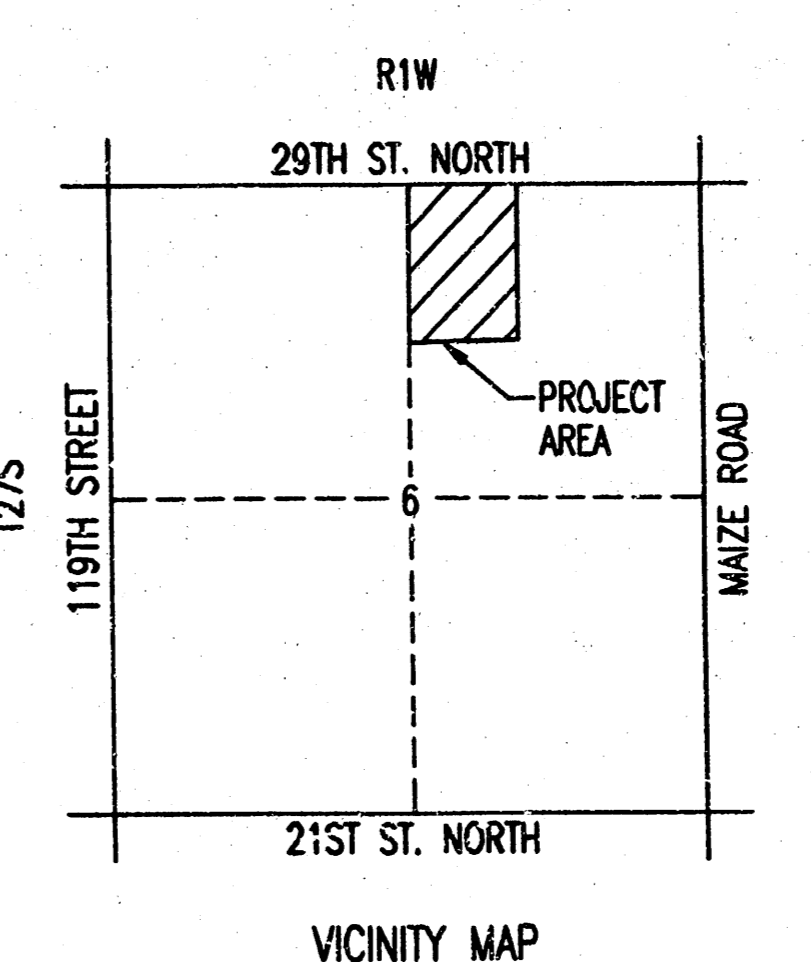
N.E. Cor. Sec. 6, T27S, R1W  
Found #4 Bar w/Moehring Cap

N 1/4 Cor.  
Sec. 6, T27S, R1W  
Found #4 Bar

SCALE: 1"=100'  
• = 3/4" IRON PIPE W/PEC CAP UNLESS OTHERWISE NOTED  
BENCHMARK:  
C.O.W. BENCHMARK - 0.5 MILES WEST OF MAIZE ROAD, ON  
29TH ST. NORTH, SOUTH RIGHT-OF-WAY, ON POLE  
LINE SOUTH.  
ELEVATION: 178.29 CITY DATUM

MINIMUM PAD ELEVATIONS (LOWEST OPENING) SHALL BE AS FOLLOWS:

BLOCK	CITY DATUM
BLOCK 1	170.40
LOTS 10-17	171.90
LOTS 24-26	171.90
BLOCK 2	162.00
LOTS 6-10	171.50
LOTS 11-14	171.50



- ### LEGEND
- SOIL GROUP BOUNDARY
  - ⊙ BASIN IDENTIFIER
  - MINOR BASIN BOUNDARY
  - MAJOR BASIN BOUNDARY
  - ➔ MAJOR STORM WATER OVERFLOW (Q100)
  - ➔ MINOR STORM WATER FLOW (Q2)
  - ⊙ NODE IDENTIFIER
  - STORM SEWER AND INLET
  - PRIVATE STORM SEWER AND INLET (BY OWNER)
  - STORM SEWER AND MANHOLE
  - SPOT ELEVATION
  - HIGH POINT ELEVATION
  - MATCH EXISTING ELEVATION
  - BENCH MARK
  - ELECTRIC POLE
  - DEADMAN
  - ELECTRIC BOX
  - OVERHEAD ELECTRIC
  - TELEPHONE BOX
  - CABLE TV BOX
  - WATER VALVE
  - FIRE HYDRANT
  - SANITARY SEWER MANHOLE

DSNR: BLB OPER: BJS SCALE: 1"=100.00  
 G:\2002\02418\001\DWG\DRAINAGE\_3\_08-01-2003 03:35:15 pm

Revision <b>EVERGREEN 4TH</b> <b>DRAINAGE PLAN</b> NEIL D. CABLE, P.E. - CITY ENGINEER CITY OF WICHITA PROJECT NO. 472-83782 <b>Professional Engineering Consultants, P.A.</b> 303 S. TOPEKA • WICHITA, KANSAS 67202 316-262-2691 • FAX 316-262-3003	No. _____ By _____ Date _____
Designed by BDR Drawn by BJS	Job No. 35- Date MARCH 2003