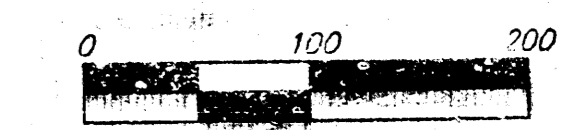
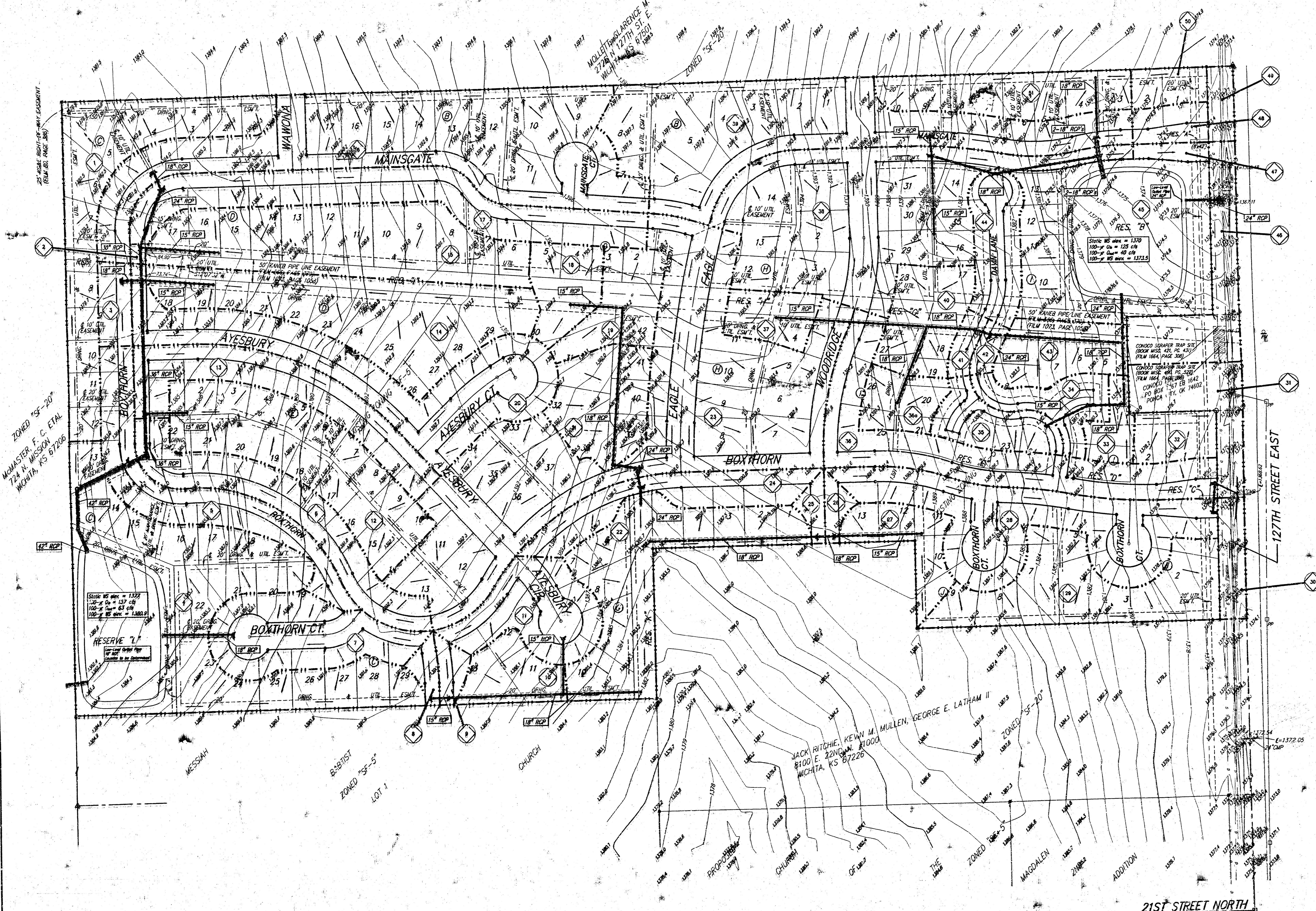


DRAINAGE PLAN THE FAIRMONT

AN ADDITION TO WICHITA, SEDGWICK COUNTY, KANSAS



MINIMUM BUILDING PAD ELEVATIONS FOR LOWEST OPENING TO THE STRUCTURES			
LOT(S)	BLOCK	CITY DATUM	ELEVATION
14,15,16,22,23	C	196.5	1,381.9
5-10	F	196.5	1,381.3
5-7, 9-13	H	196.0	1,373.4

BENCHMARK
 GREENWICH AND 21ST NORTH
 CITY OF WICHITA BENCHMARK DISK
 41' SOUTH AND 58' WEST OF IRON C.I.R. LINE BORN
 12.0' SW OF ASPHALT, 14.2' EAST OF FACE P.P.
 12.0' WEST OF FACE P.P.
 ELEVATION = 123.58 (CITY DATUM), 1361.58 NGVD

COUNTY "C" CUT, SOUTH HEADWALL
 1/2 MILE WEST OF 127TH ST. EAST
 ON 37TH STREET NORTH
 ELEV. = 195.83 (CITY DATUM), 1373.23 NGVD

TOP OF IRON - SE COR. SE 1/4 SEC. 3
 TWP. 27-S, R-2-E, (127TH ST. EAST &
 21ST ST. NORTH)
 ELEV. = 198.01 (CITY DATUM), 1385.41 NGVD

Basin	Area acres	Runoff Coefficient			Peak Flowrate		
		2-yr in/hr	5-yr in/hr	100-yr in/hr	2-yr cfs	5-yr cfs	100-yr cfs
1	2.2	0.50	0.54	0.76	4.2	5.4	12
2	0.1	0.50	0.54	0.76	0.2	0.2	0.8
3	0.3	0.50	0.54	0.76	0.6	0.7	1.7
4	0.0	0.61	0.66	0.82	1.2	1.5	4.0
5	1.4	0.50	0.54	0.76	2.7	3.4	10
6	1.5	0.50	0.54	0.76	2.9	3.7	9.4
7	1.5	0.50	0.54	0.76	2.9	3.7	9.4
8	0.2	0.50	0.54	0.76	0.4	0.5	1.1
9	0.2	0.50	0.54	0.76	0.4	0.5	1.1
10	0.6	0.50	0.54	0.76	1.1	1.5	3.4
11	1.2	0.50	0.54	0.76	2.3	3.0	6.7
12	2.3	0.50	0.54	0.76	4.4	5.7	13
13	1.5	0.50	0.54	0.76	2.9	3.7	9.4
14	2.7	0.50	0.54	0.76	3.2	4.1	15
15	2.7	0.50	0.54	0.76	3.2	4.1	15
16	4.5	0.50	0.54	0.76	8.8	11	26
17	2.2	0.50	0.54	0.76	4.2	5.4	12
18	0.7	0.50	0.54	0.76	1.3	1.7	3.5
19	0.6	0.50	0.54	0.76	1.5	2.0	4.5
20	2.6	0.50	0.54	0.76	5.0	6.4	15
21	1.7	0.50	0.54	0.76	3.1	3.7	6.2
22	2.2	0.50	0.54	0.76	4.2	5.4	12
23	5.7	0.50	0.54	0.76	12	16	35
24	1.0	0.50	0.54	0.76	1.9	2.5	6.6
25	0.2	0.50	0.54	0.76	0.4	0.5	1.1
26	0.2	0.50	0.54	0.76	0.4	0.5	1.1
27	0.7	0.50	0.54	0.76	1.3	1.7	3.9
28	2.5	0.50	0.54	0.76	4.8	6.2	14
29	1.9	0.50	0.54	0.76	3.6	4.7	11
30	0.4	0.50	0.54	0.76	0.8	1.0	2.2
31	0.9	0.50	0.54	0.76	1.7	2.2	5.0
32	0.5	0.50	0.54	0.76	1.0	1.2	2.8
33	0.1	0.50	0.54	0.76	0.6	0.7	1.7
34	0.6	0.50	0.54	0.76	1.1	1.5	3.4
35	0.6	0.50	0.54	0.76	1.1	1.5	3.4
36	2.1	0.50	0.54	0.76	5.0	6.4	15
36a	0.5	0.50	0.54	0.76	1.0	1.2	2.8
37	0.5	0.50	0.54	0.76	1.0	1.2	2.8
38	4.1	0.50	0.54	0.76	7.9	10	23
39	2.9	0.50	0.54	0.76	5.5	7.0	17
40	0.9	0.50	0.54	0.76	1.7	2.2	5.0
41	0.2	0.50	0.54	0.76	0.4	0.5	1.1
42	0.7	0.50	0.54	0.76	1.3	1.7	3.9
43	0.8	0.50	0.54	0.76	1.5	2.0	4.5
44	0.8	0.50	0.54	0.76	1.5	2.0	4.5
45	3.3	0.61	0.66	0.82	8.0	9.9	20
46	1.1	0.50	0.54	0.76	2.1	2.7	6.2
47	0.1	0.50	0.54	0.76	0.2	0.2	0.6
48	0.7	0.50	0.54	0.76	1.3	1.7	3.9
49	0.7	0.50	0.54	0.76	1.3	1.7	3.9
50	0.3	0.50	0.54	0.76	0.6	0.7	1.7
51	1.1	0.50	0.54	0.76	2.1	2.7	6.2

NOTES:
 Calculations have been omitted from this submittal. Refer to the original submitted for "Drainage Plan" for THE FAIRMONT for hydraulic pond routings.