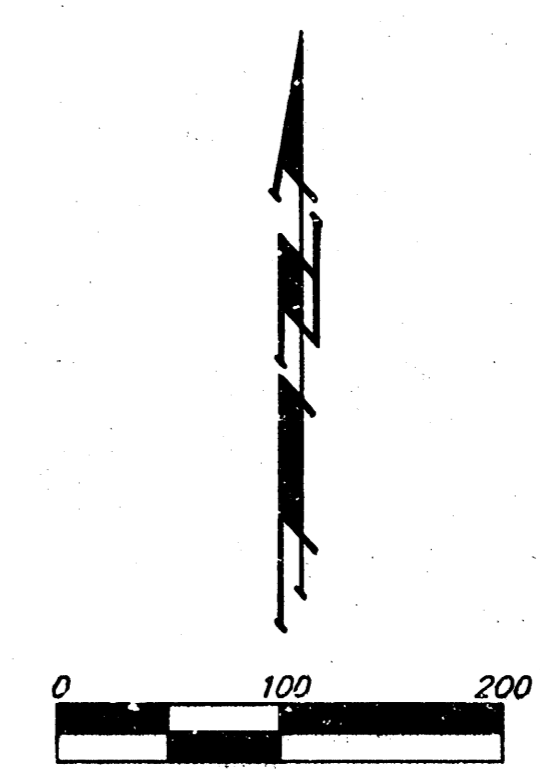
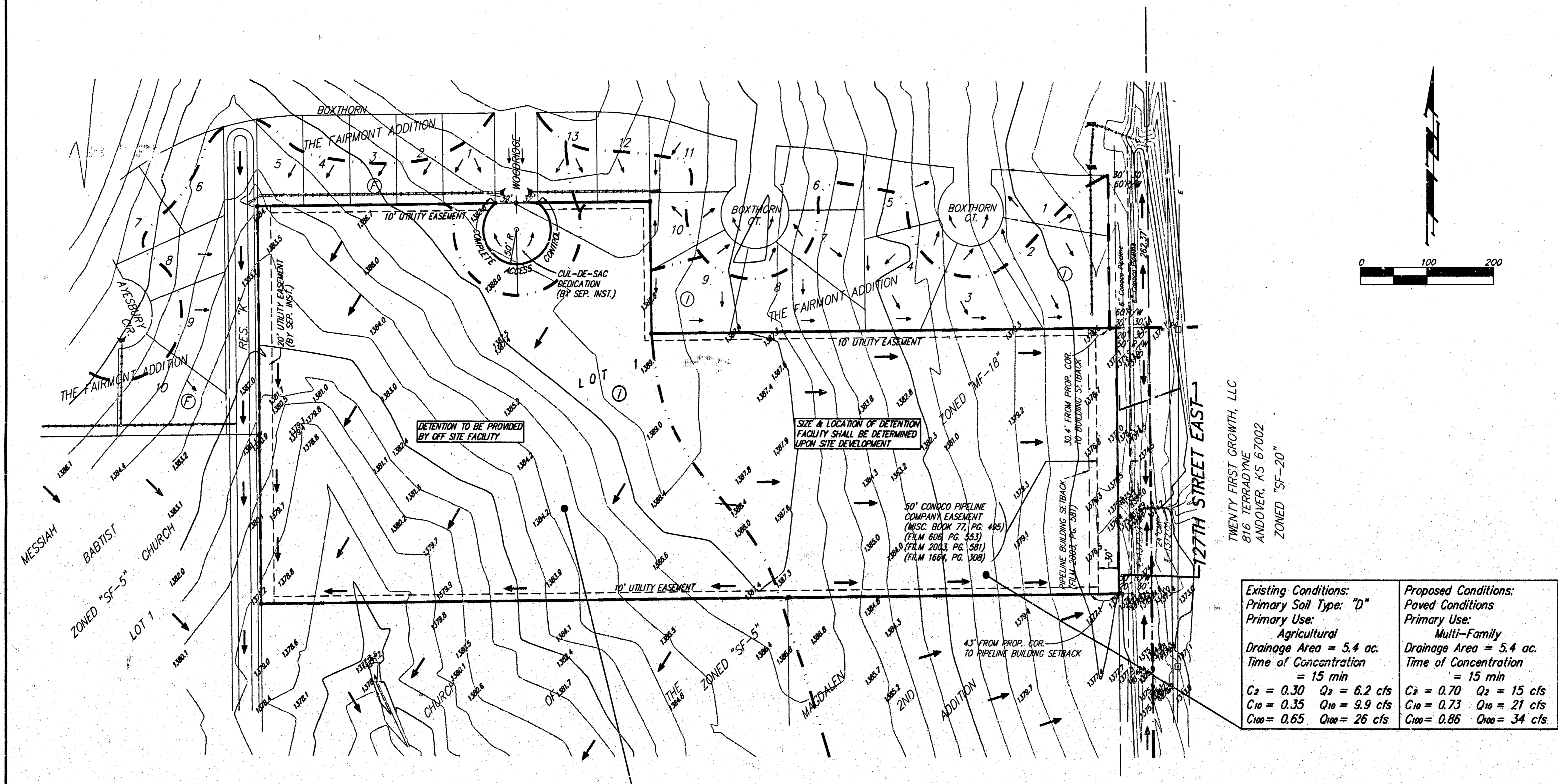


DRAINAGE PLAN THE FAIRMONT 2ND AN ADDITION TO WICHITA, SEDGWICK COUNTY, KANSAS



TWENTY FIRST GROWTH, LLC
816 TERRADINE
ANDOVER, KS 67002
ZONED "SF-20"

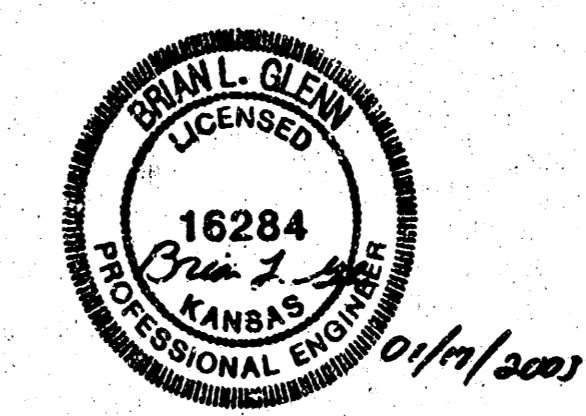
Existing Conditions:		Proposed Conditions:	
Primary Soil Type: "D"		Paved Conditions	
Primary Use:		Primary Use:	
Agricultural		Multi-Family	
Drainage Area = 5.4 ac.	Drainage Area = 5.4 ac.		
Time of Concentration = 15 min	Time of Concentration = 15 min		
$C_2 = 0.30$ $Q_2 = 6.2$ cfs	$C_2 = 0.70$ $Q_2 = 15$ cfs		
$C_{10} = 0.35$ $Q_{10} = 9.9$ cfs	$C_{10} = 0.73$ $Q_{10} = 21$ cfs		
$C_{100} = 0.65$ $Q_{100} = 26$ cfs	$C_{100} = 0.86$ $Q_{100} = 34$ cfs		

Existing Conditions:		Proposed Conditions:	
Primary Soil Type: "D"		Paved Conditions	
Primary Use:		Primary Use:	
Agricultural		Multi-Family	
Drainage Area = 7.9 ac.	Drainage Area = 7.9 ac.		
Time of Concentration = 15 min	Time of Concentration = 15 min		
$C_2 = 0.30$ $Q_2 = 9.1$ cfs	$C_2 = 0.70$ $Q_2 = 21$ cfs		
$C_{10} = 0.35$ $Q_{10} = 14$ cfs	$C_{10} = 0.73$ $Q_{10} = 30$ cfs		
$C_{100} = 0.65$ $Q_{100} = 38$ cfs	$C_{100} = 0.86$ $Q_{100} = 50$ cfs		

BENCHMARK:
GREENWICH AND 21ST NORTH
CITY OF WICHITA BENCHMARK DISC
41' SOUTH AND 58' WEST OF IRON CTR. LINE BOTH
12.0' SW OF ASPHALT, 14.2' EAST OF FACE P.P.
12.0' WEST OF FACE P.P.
ELEVATION = 123.98 (CITY DATUM), 1361.38 NGVD

COUNTY "C" CUT, SOUTH HEADWALL
1/2 MILE WEST OF 127TH ST. EAST
ON 37TH STREET NORTH
ELEV. = 185.83 (CITY DATUM), 1372.23 NGVD

TOP OF IRON - SE COR. SE 1/4 SEC. 3,
TWP. 27-S, R-2-E, (127TH ST. EAST &
21ST ST. NORTH)
ELEV. = 198.01 (CITY DATUM), 1385.41 NGVD



Reprint 17 JANUARY 2003
28 MARCH 2002
BAUGHMAN COMPANY P. A.
ENGINEERING, SURVEYING, & PLANNING
316-242-7271 • 315 ELLIS • WICHITA, KANSAS 67211
F:\V\0\0\PROJECTS\THE FAIRMONT APIS\LONG\FAIRMONT\TP2.DWG