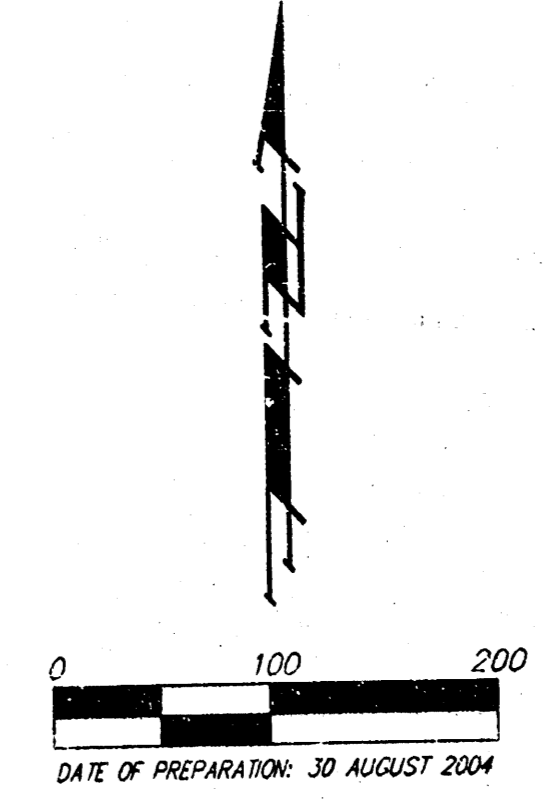
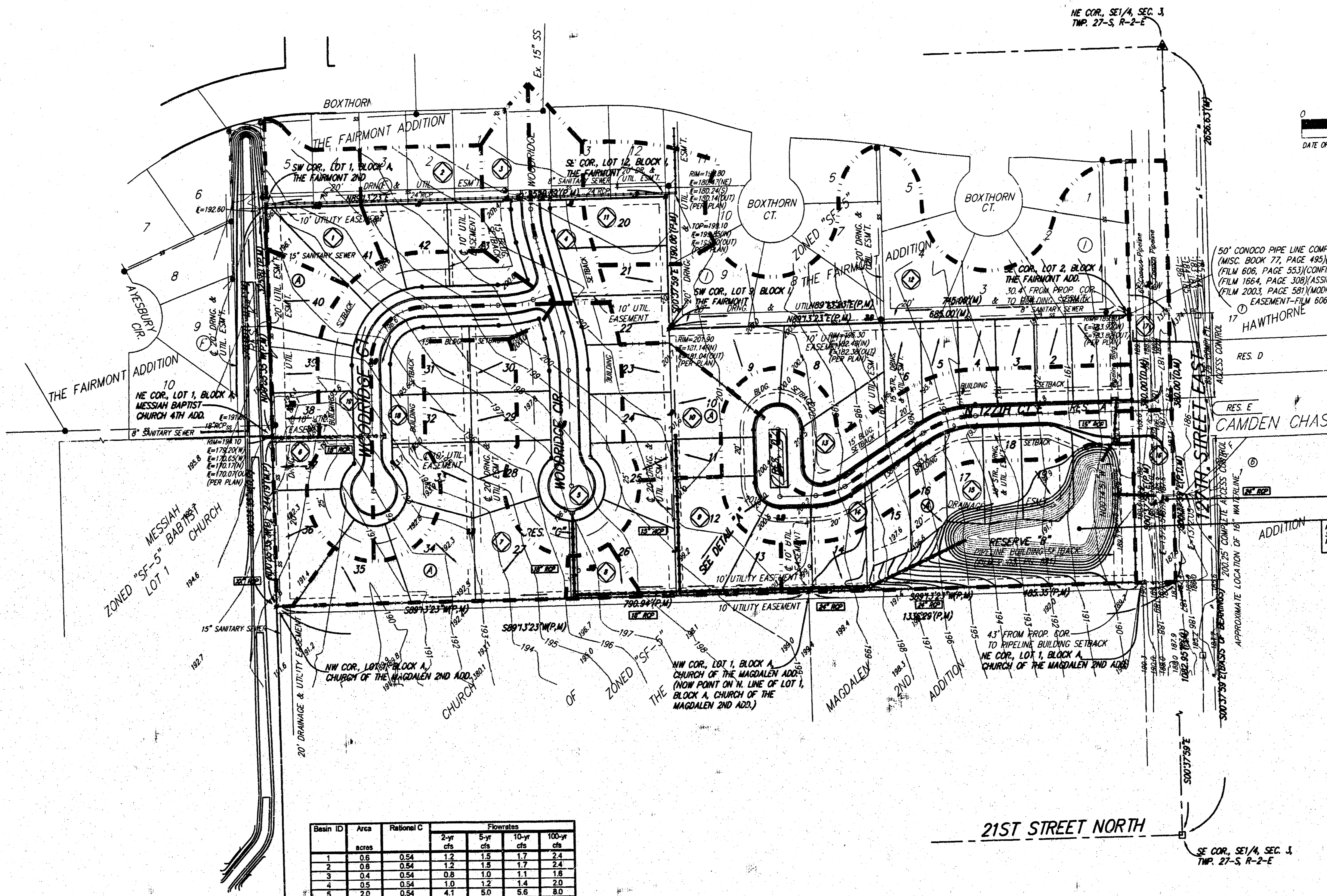


DRAINAGE PLAN

THE FAIRMONT 3RD

AN ADDITION TO WICHITA, SEDGWICK COUNTY, KANSAS



MINIMUM BUILDING PAD ELEVATIONS FOR
LOWEST OPENING TO THE STRUCTURES

LOT	BLOCK	ELEVATION	
		NGVD29	NGVD29
36-40	A	1,383.9	196.5
14-19	A	1,376.5	189.1

Basin ID	Area acres	Rational C	Flowrates			
			2-yr cfs	5-yr cfs	10-yr cfs	100-yr cfs
1	0.6	0.54	1.2	1.5	1.7	2.4
2	0.8	0.54	1.2	1.5	1.7	2.4
3	0.4	0.54	0.8	1.0	1.1	1.8
4	0.5	0.54	1.0	1.2	1.4	2.0
5	2.0	0.54	4.1	5.0	5.6	8.0
8	0.8	0.54	1.5	1.9	2.1	3.0
7	1.2	0.54	2.5	3.0	3.4	4.8
6	0.5	0.54	0.4	0.5	0.6	0.8
9	0.7	0.54	1.4	1.7	2.0	2.8
10	0.8	0.54	1.2	1.5	1.7	2.4
11	0.7	0.54	1.4	1.7	2.0	2.8
12	3.6	0.54	7.4	9.0	10	14
13	1.0	0.54	2.1	2.5	2.8	4.0
14	1.2	0.54	2.5	3.0	3.4	4.8
15	1.8	0.54	3.7	4.5	5.1	7.2
16	0.4	0.54	0.8	1.0	1.1	1.8
17	0.5	0.54	1.0	1.2	1.4	2.0
18	0.8	0.54	1.8	2.2	2.5	3.6
19	1.1	0.54	2.3	2.7	3.1	4.4

Flow (cfs)	
1" x 12"	0.5
2" x 12"	1.0
3" x 12"	1.5
4" x 12"	2.0
6" x 12"	3.0
8" x 12"	4.0
10" x 12"	5.0
12" x 12"	6.0
15" x 12"	7.5
18" x 12"	9.0
21" x 12"	10.5
24" x 12"	12.0
30" x 12"	15.0
36" x 12"	18.0
42" x 12"	21.0
48" x 12"	24.0
54" x 12"	27.0
60" x 12"	30.0
72" x 12"	36.0
84" x 12"	42.0
96" x 12"	48.0
108" x 12"	54.0
120" x 12"	60.0

10 Sept 2004

Baughman Company, P.A.
 315 Ellis St. Wichita, KS 67211 P 316-262-7271 F 316-262-0149
ENGINEERING | SURVEYING | PLANNING | LANDSCAPE ARCHITECTURE