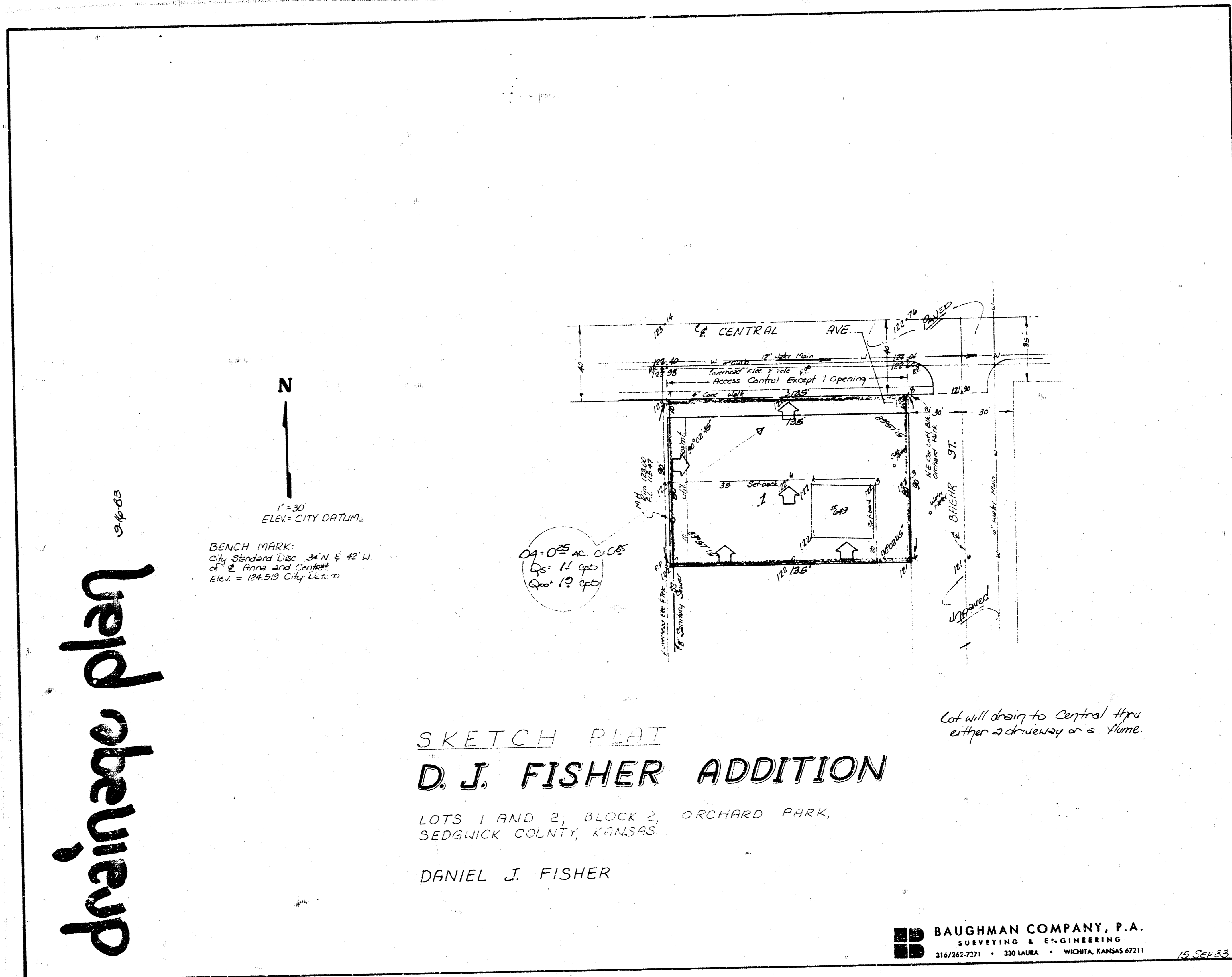


D. J. FISHER
(DRAINAGE)



drainage plan 9/18/03



1"=30'
ELEV. CITY DATUM.

BENCH MARK:
City Standard Disc 34" N E 42" W
at E. Park and Center
Elev. = 124.519 City Datum

04-02 AC C.C.B.
Lg: 11' 0"
Wd: 12' 0"

SKETCH PLAN
D. J. FISHER ADDITION

LOTS 1 AND 2, BLOCK 2, ORCHARD PARK,
SEDGWICK COUNTY, KANSAS.

DANIEL J. FISHER

Cat will drain to Central thru
either a driveway or a flume.

BAUGHMAN COMPANY, P.A.
SURVEYING & ENGINEERING
316/261-7271 • 330 LAURA • WICHITA, KANSAS 67211

18 SEP 03