

DRAINAGE FROM THE MAIZE ROAD CIP PROJECT WILL BE CARRIED BY THIS STORM WATER SEWER SYSTEM. MUCH OF THIS RUNOFF WILL BE FROM UPSTREAM DETENTION PONDS, THE RUNOFF FROM WHICH WILL BE POST SYSTEM PEAK.

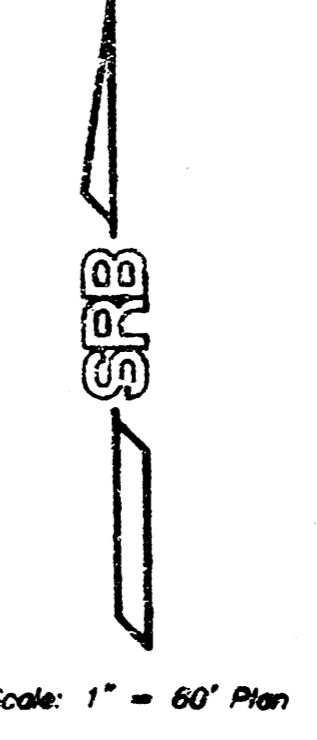


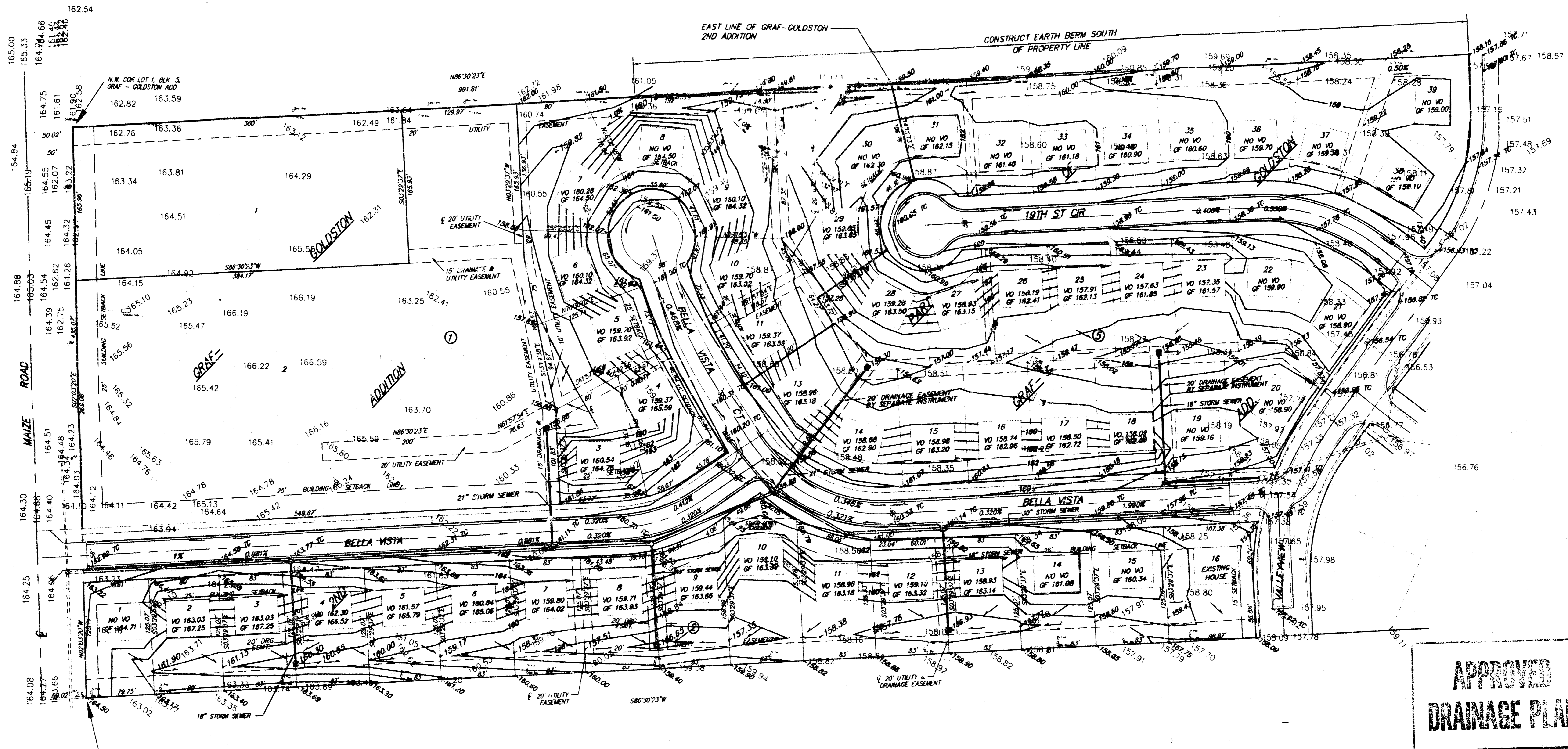
**REVISED DRAINAGE PLAN FOR
 GRAF-GOLDSTON 2ND ADDITION AND
 PART OF BLOCK 5, GRAF-GOLDSTON ADDITION**

SRB 324 NORTH MAIN WICHITA, KANSAS 67203
 SAVOY, RUGGLES & BOHM, P.A.
 ENGINEERING & SURVEYING

PROJECT NUMBER: _____

DRAWN: DKD/KWL	DESIGN: TA	REVIS: JLL	DATE: Mar 1, 1996	UTILITY: T.C.R.
----------------	------------	------------	-------------------	-----------------





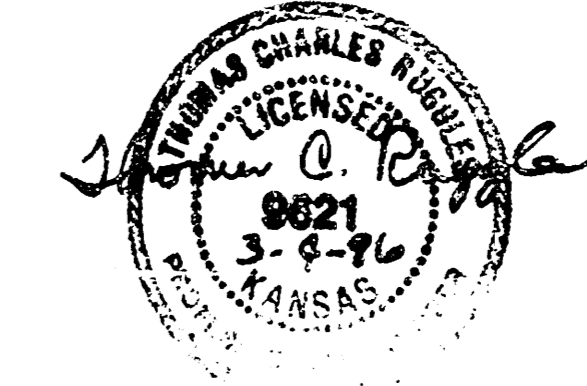
**APPROVED
DRAINAGE PLAN**

LEGEND

- 162.31 TC PROPOSED TOP OF CURB ELEVATION
- 162.31 PROPOSED GROUND ELEVATION
- 163 PROPOSED CONTOUR
- 166.59 EXISTING GROUND ELEVATION
- OF 163.18 PROPOSED GARAGE FLOOR ELEVATION
- VO 158.96 PROPOSED VIEW OUT ELEVATION



Scale: 1" = 60'



LOT GRADING PLAN FOR GRAF-GOLDSTON 2ND ADDITION AND PART OF BLOCK 5, GRAF-GOLDSTON ADDITION			
SRB		224 NORTH MAIN WICHITA, KANSAS 67203 316 264-8008 FAX 264-4621	
SAVOY, RUGGLES & BOHM, P.A. ENGINEERING & SURVEYING			
PROJECT NUMBER			
DESIGN	DATE	UTILITY	SRB JOB
DKD/KWL	Mar. 1, 1996	T.C.R.	139E