

HARBOR ISLE  
ADDITION

APPROVED  
DRAINAGE PLAN

**LOT GRADING PLAN**  
**HARBOR ISLE 3RD ADDITION**  
**TO WICHITA - SEDGWICK COUNTY, KANSAS**

**FEBRUARY 8, 2000**

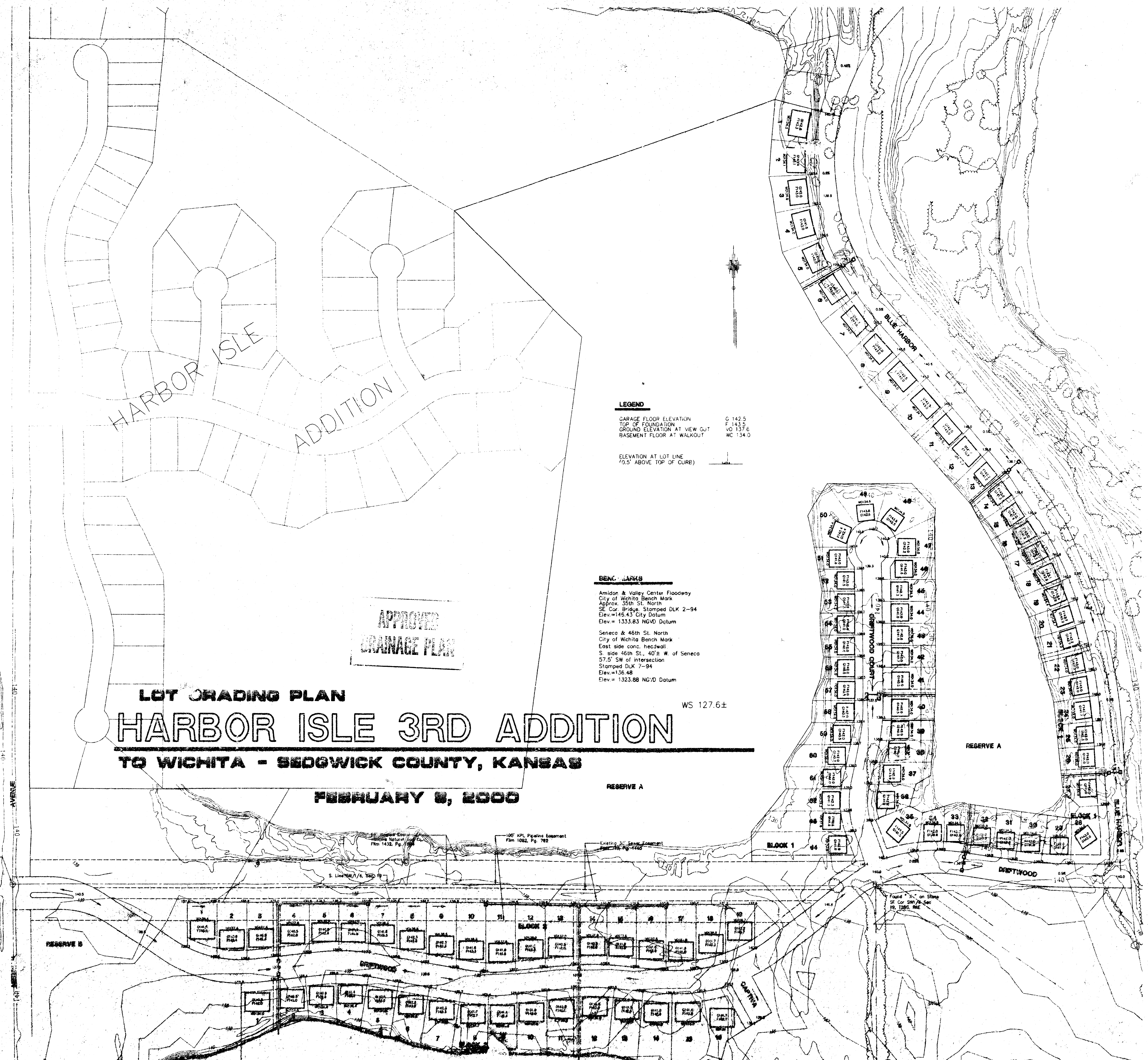
WS 127.6±

**LEGEND**  
GARAGE FLOOR ELEVATION G 142.5  
TOP OF FOUNDATION F 143.5  
GROUND ELEVATION AT VIEW OUT v0 137.6  
BASEMENT FLOOR AT WALKOUT WC 134.0

ELEVATION AT LOT LINE  
(0.5' ABOVE TOP OF CURB)

**BENCH MARKS**  
Amidon & Valley Center Floodway  
City of Wichita Bench Mark  
Approx. 35th St. North  
SE Cor. Bridge, Stamped DLK 2-94  
Elev. = 145.43 City Datum  
Elev. = 1333.83 NGVD Datum  
Seneca & 46th St. North  
City of Wichita Bench Mark  
East side conc. headwall  
S. side 46th St., 40± W. of Seneca  
57.5' SW of intersection  
Stamped DLK 7-94  
Elev. = 135.48  
Elev. = 1323.88 NGVD Datum

SW Cor SW 1/4  
SEC. 16, T25S,  
R1E



RESERVE B

RESERVE A

RESERVE A

BLOCK 1

DRIFTWOOD