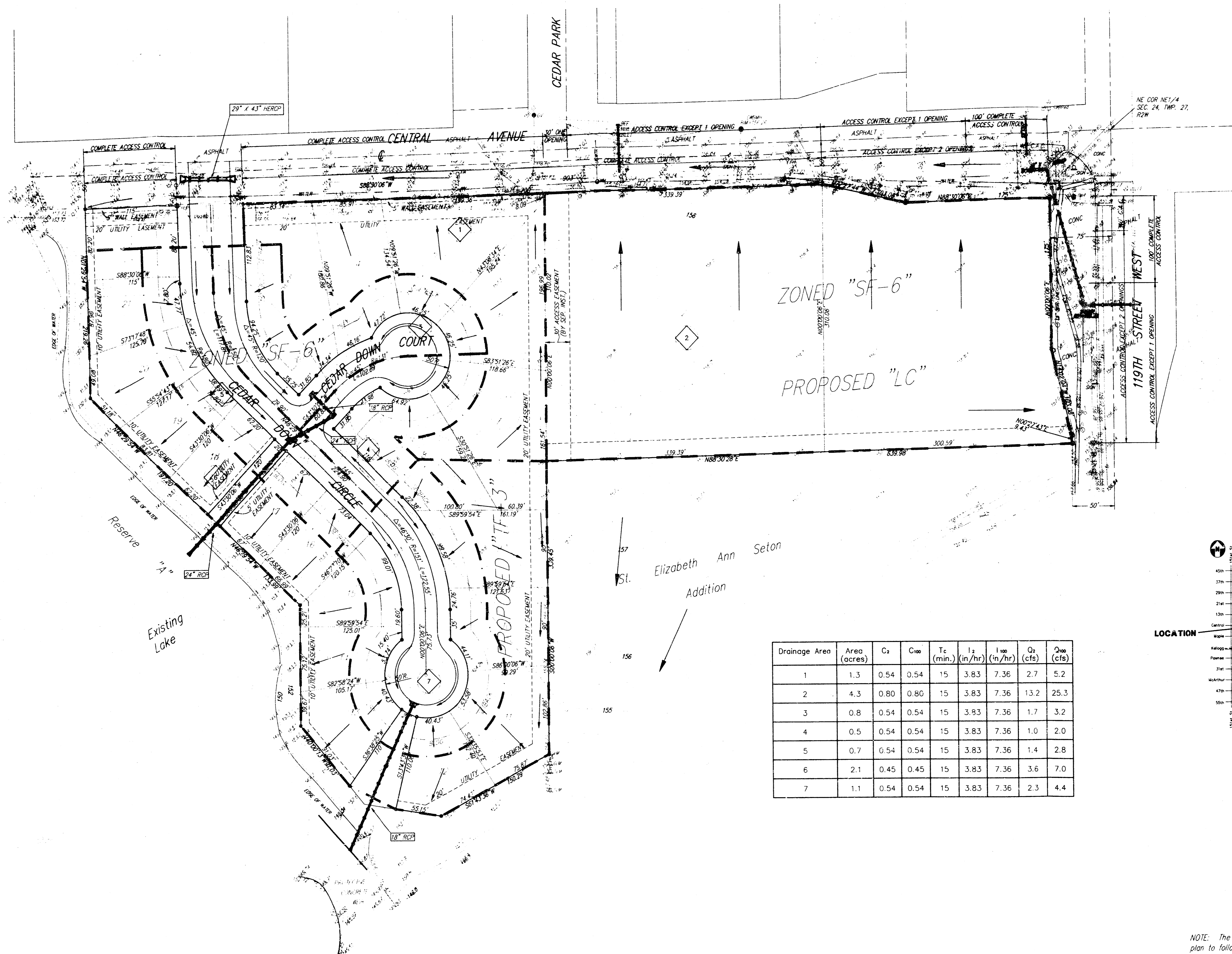
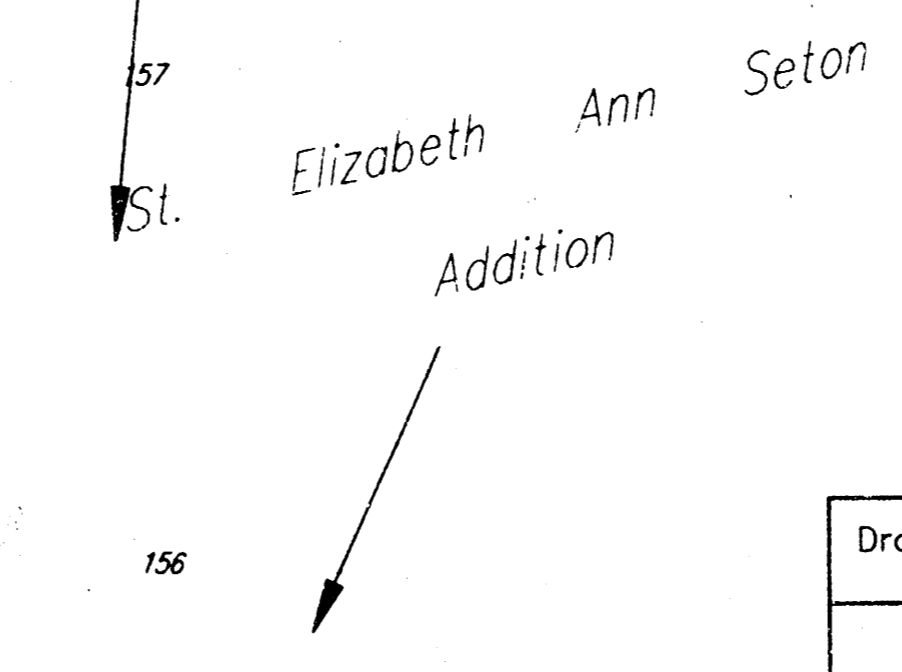


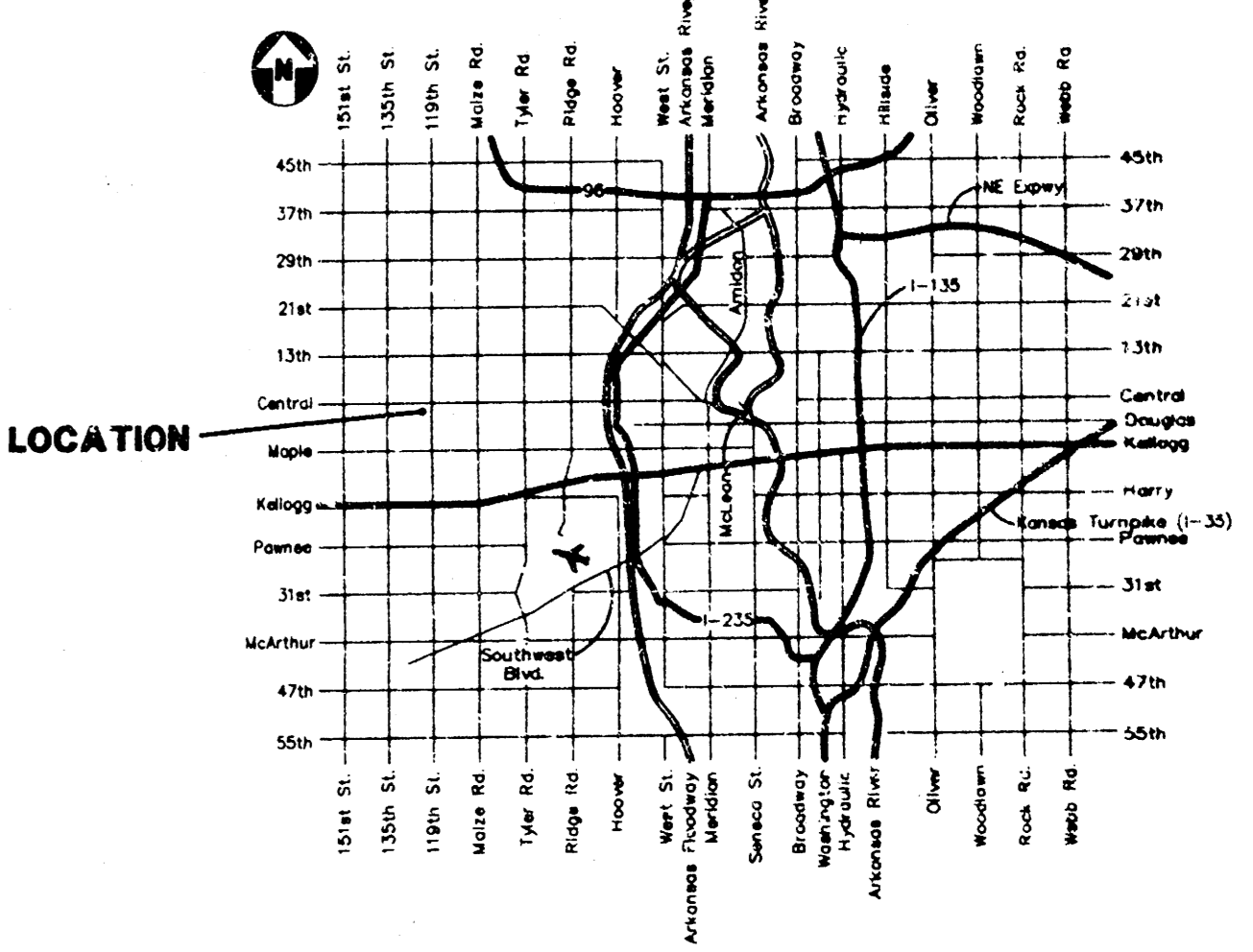
The Haven
DRAINAGE PLAN
KETZNER ADDITION
WICHITA, SEDGWICK COUNTY, KANSAS



BENCHMARK
 CITY OF WICHITA BENCHMARK
 SE CORNER INTERSECTION
 40' EAST AND 46' SOUTH OF
 CENTER LINE NORTH 58.82'
 SE OF SECTION CORNER MON.
 21.7 FEET WEST OF FACE WALK
 N/S, 13.6' NORTH OF WALK E/W
 ELEVATION = 156.83



Drainage Area	Area (acres)	C _s	C ₁₀₀	T _c (min.)	I ₁ (in/hr)	I ₁₀₀ (in/hr)	Q ₁ (cfs)	Q ₁₀₀ (cfs)
1	1.3	0.54	0.54	15	3.83	7.36	2.7	5.2
2	4.3	0.80	0.80	15	3.83	7.36	13.2	25.3
3	0.8	0.54	0.54	15	3.83	7.36	1.7	3.2
4	0.5	0.54	0.54	15	3.83	7.36	1.0	2.0
5	0.7	0.54	0.54	15	3.83	7.36	1.4	2.8
6	2.1	0.45	0.45	15	3.83	7.36	3.6	7.0
7	1.1	0.54	0.54	15	3.83	7.36	2.3	4.4



VICINITY MAP

NOTE: The proposed drainage plan provided herein is a generally defined plan to follow for design. It is recognized and assumed that upon the final design of street and storm sewer improvements within this plot that the designer will modify or alter the general drainage plan as necessary in order to implement the installation of the improvements to obtain the most economical design and construction possible.

BENCHMARK:

City of Wichita Benchmark
 SE Corner Intersection
 40' East and 46' South of
 Center Line Both, 58.82'
 SE of Section Corner Iron.
 21.7' West of Face Walk
 N/S, 13.6' North of Walk E/W.
 Elevation = 156.93

SCALE: 1" = 60'
 • = Iron

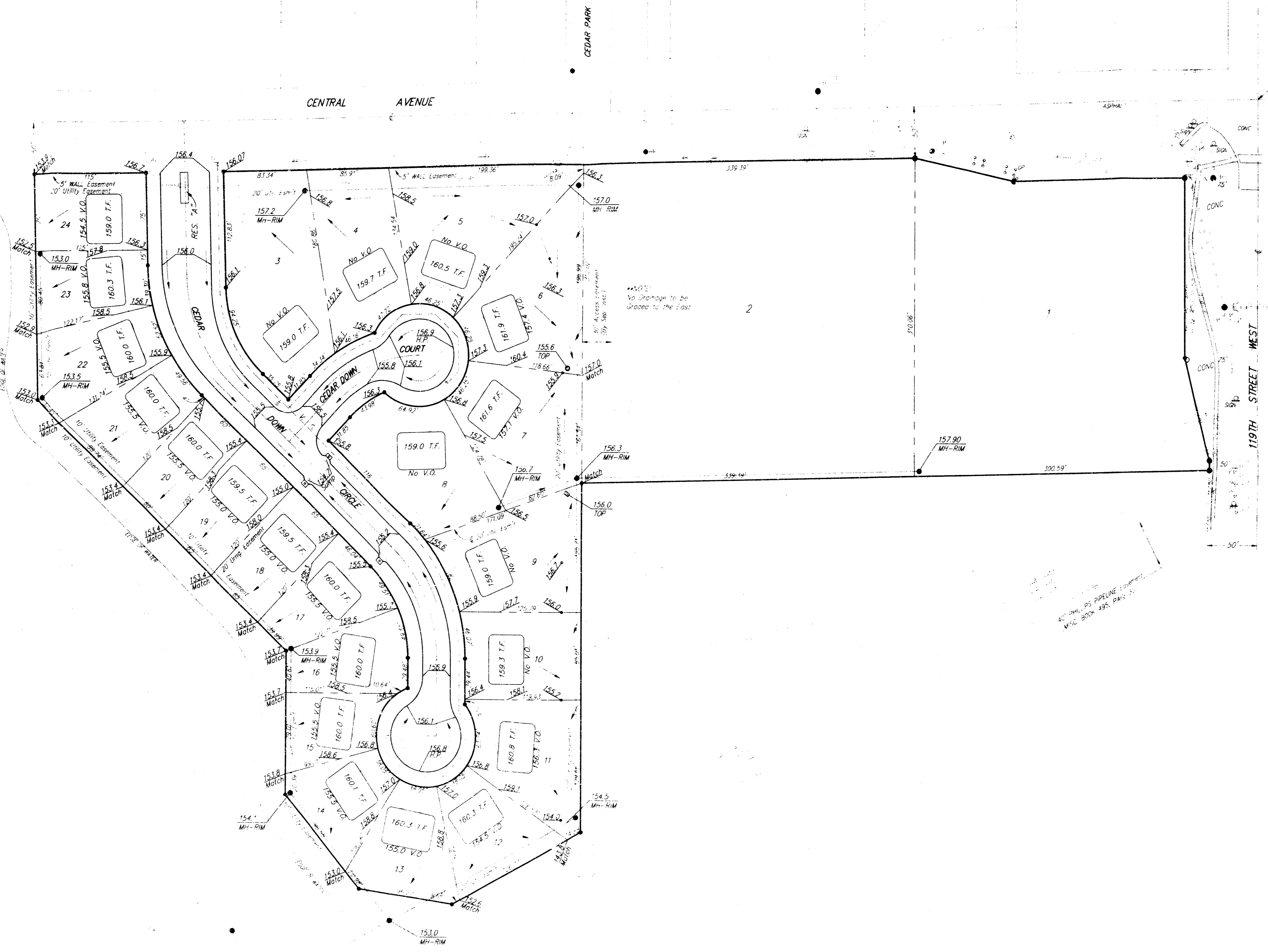
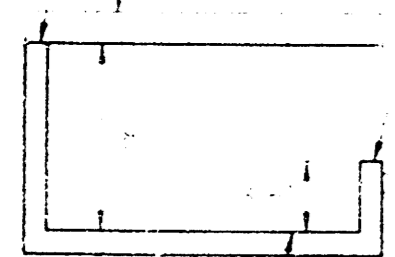
NOTES:

Proposed Top of Foundation Elevations
 Are Shown On Plans. Contractor to
 Set Finished Floor Elevations.

All Street Elevations Shown on Plans
 Are for Top of Curb (Full-Height).

This Grading Plan is Designed with
 View-Out Basements. Elevations
 Shown at Rear of House (XX.X V.O.)
 Are for Minimum Opening.

TYPICAL VIEW OUT



**APPROVED
 DRAINAGE PLAN**

REVISION RECORD			
NO.	DATE	DESCRIPTION	BY
1		Revised Grades	JAK
2			NHW

GRADING PLAN			
BAUGHMAN COMPANY P.A.			
PROJECT NUMBER			
DESIGN	DRAWN	APPROVED	DATE
			SCALE
			SHEET 1 OF 1