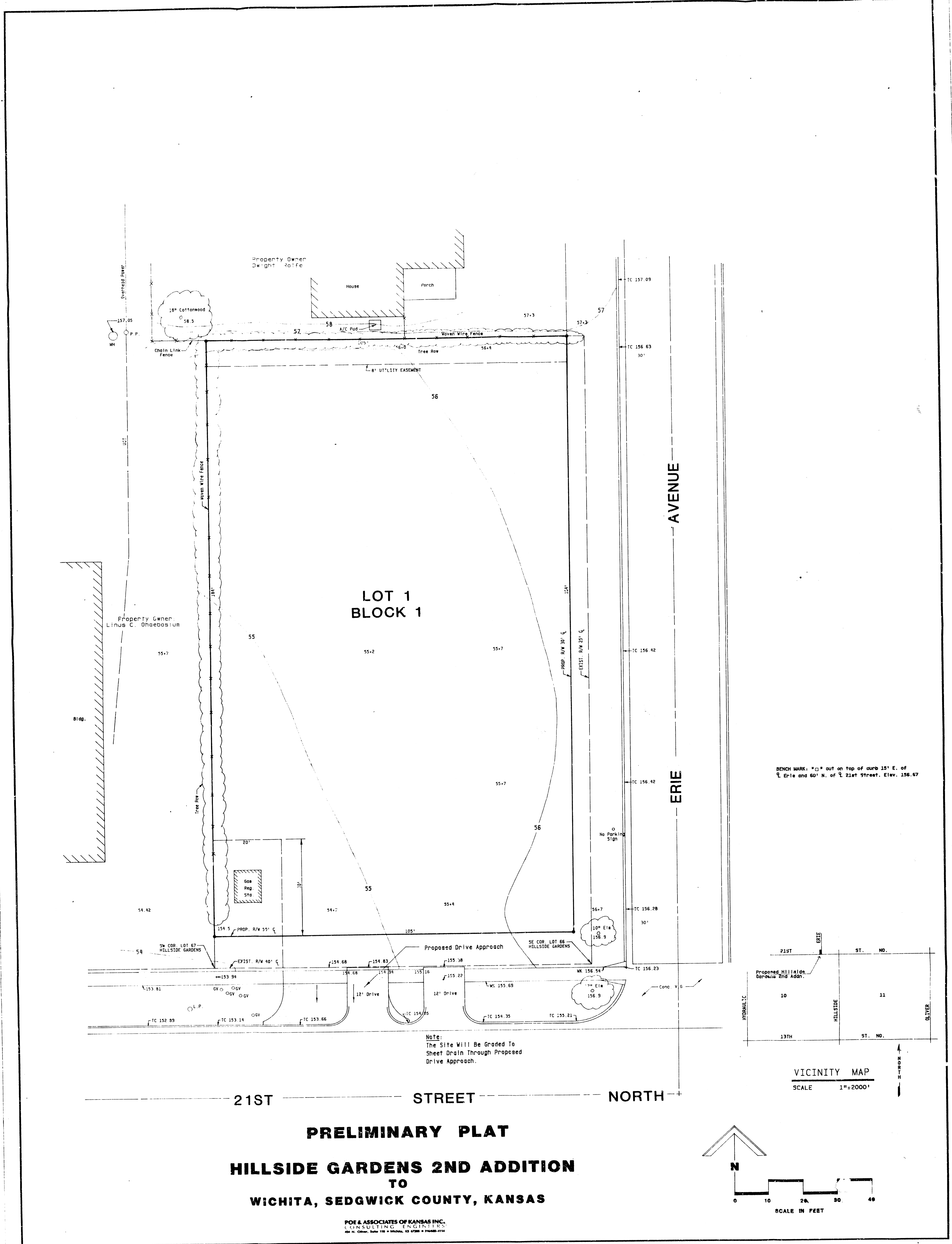
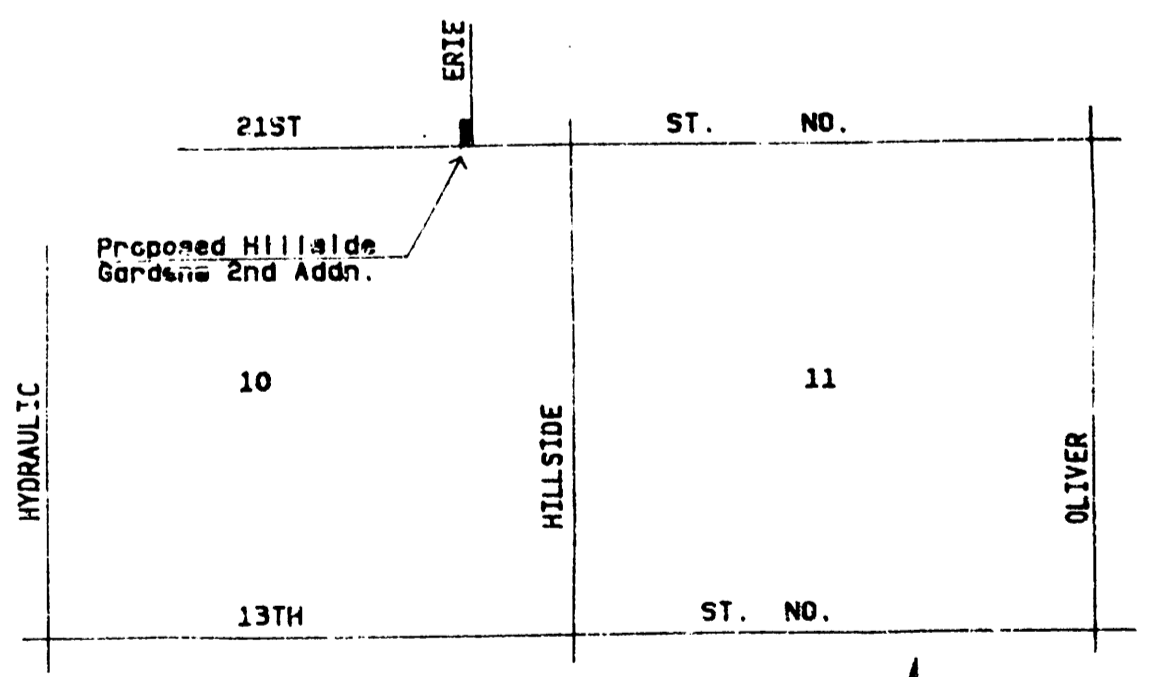


HILLSIDE GARDENS 2ND ADDITION (Partially)

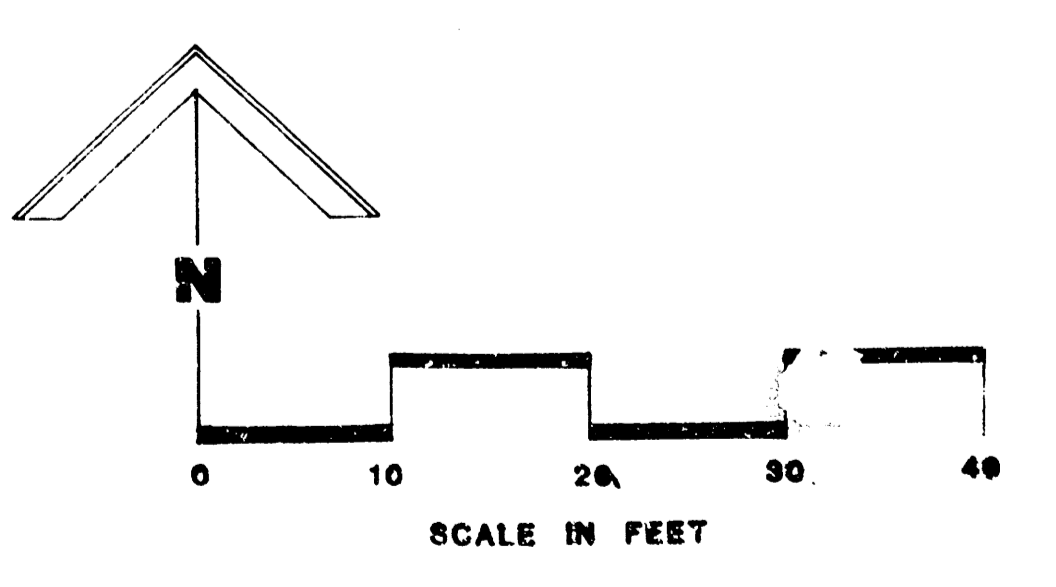


BENCH MARK: "X" out on top of curb 15' E. of E. 1st and 60' N. of E. 21st Street. Elev. 156.67

Note:
The Site Will Be Graded To
Sheet Drain Through Proposed
Drive Approach.



VICINITY MAP
SCALE 1"=2000'



PRELIMINARY PLAT
HILLSIDE GARDENS 2ND ADDITION
TO
WICHITA, SEDGWICK COUNTY, KANSAS

POE & ASSOCIATES OF KANSAS INC.
1101 S. 17TH ST., WICHITA, KS 67202-1114
TEL: 316-261-1114 FAX: 316-261-1115