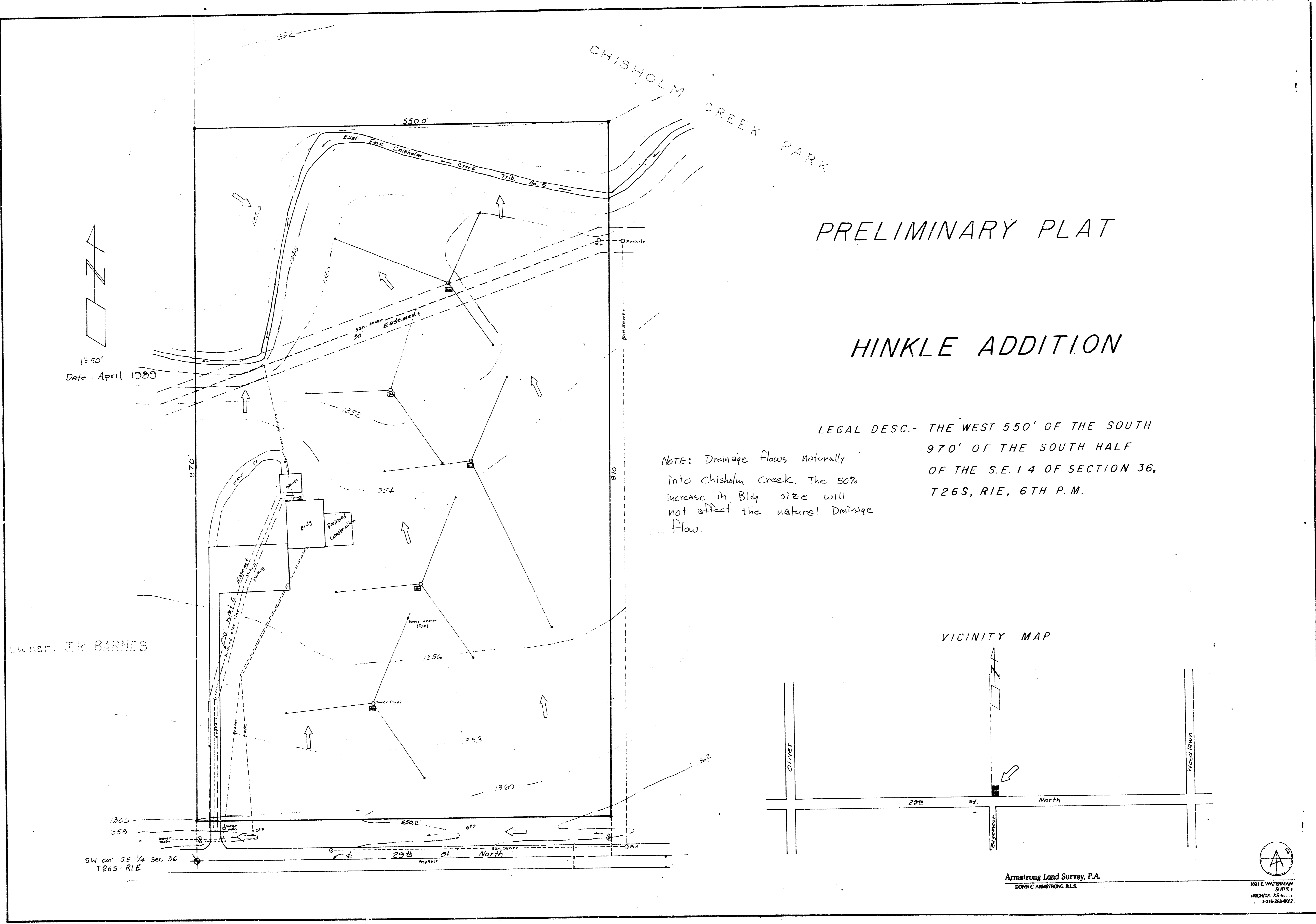


Hinkle Addition

7



# PRELIMINARY PLAT

## HINKLE ADDITION

LEGAL DESC.- THE WEST 550' OF THE SOUTH  
 970' OF THE SOUTH HALF  
 OF THE S.E. 1/4 OF SECTION 36,  
 T26S, R1E, 6TH P.M.

NOTE: Drainage flows naturally  
 into Chisholm creek. The 50%  
 increase in Bldg. size will  
 not affect the natural Drainage  
 flow.

VICINITY MAP

Armstrong Land Survey, P.A.  
 DONNY ARMSTRONG, A.L.S.  
 181 E. WATERMAN SUITE 4  
 WICHITA, KS 67202  
 1-316-263-0702

SW cor SE 1/4 Sec 36  
 T26S-R1E

owner: J.R. BARNES

Date: April 1989