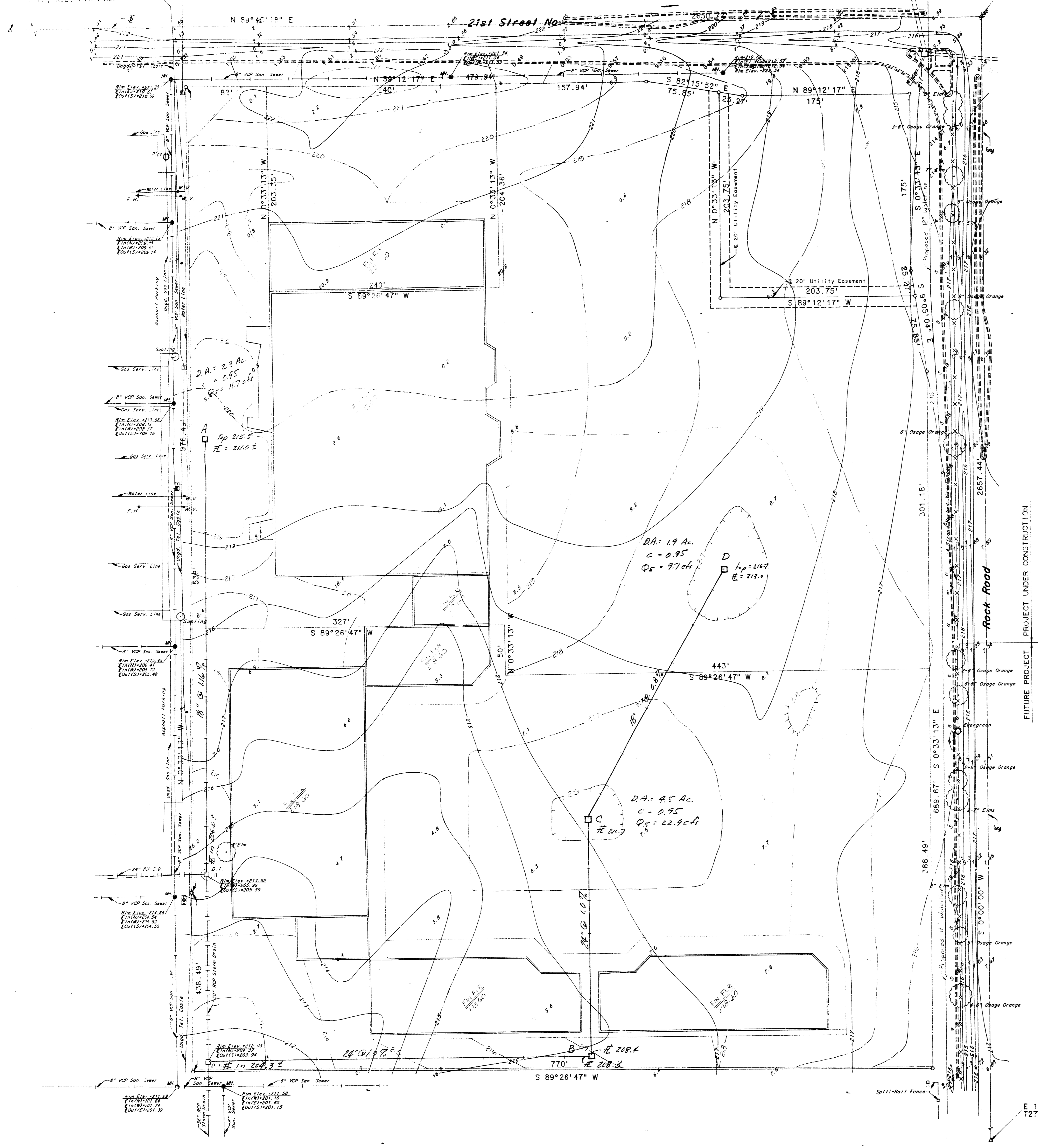


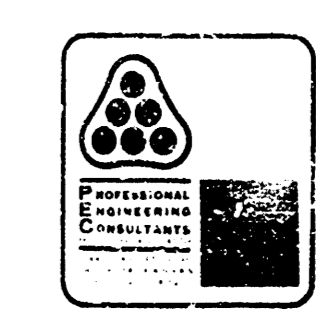
N 1/4 Cor., NE 1/4, Sec. 7,
T27S, R2E, 6th P.M.

NE Cor., NE 1/4, Sec. 7,
T27S, R2E, 6th P.M.



E.E. JABES 2ND ADDN.
Drainage Plan

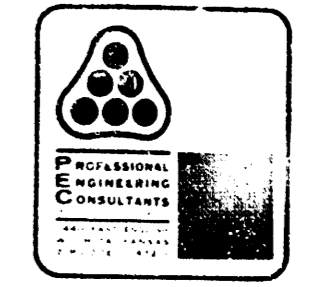
SCALE: 1"=40'



MEMO

TO: Mike Lindquist, P.E. PROJECT NO. 16-2013-01
 City Engineer PROJECT E.E. Jabes 2nd Addition
 7th Floor - City Hall 455 N. Main
 Wichita, KS 67202 Addition
 FROM: Dick Lino, P.E.
 REFERENCE: Drainage Plan
 DATE: April 2, 2013
 ATTN: Chris Breitenstein

Attached is a copy of the Drainage Plan for E. E. Jabes 2nd Addition. The proposed storm sewer extensions are to be constructed by private contract at the time of site development. Please contact me if additional information is desired.



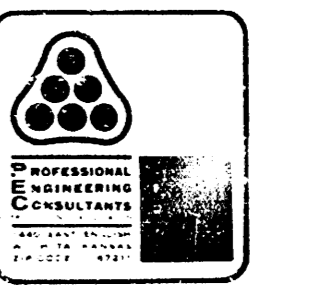
Date: 4-2-13 Page: 2 of 2
 Project: E.E. Jabes 2nd Addition
 Item: Drainage

POINT A

$D.A. = 2.3 \text{ Ac.}$
 $C = 0.95$
 $I_p = 11.7 \text{ in.}$
 $Q_p = 2.2 \text{ cfs}$
 $Q = 0.25 \times 2.2 = 0.55 \text{ cfs}$
 USE 18" RCP Flaring Full @ 1.5% S

POINT B

$D.A. = 8 \text{ Ac.}$
 $C = 0.95$
 $I_p = 8.5 \text{ in.}$
 $Q_p = 1.1 \text{ cfs}$
 $Q = 0.25 \times 1.1 = 0.275 \text{ cfs}$
 USE 18" RCP @ 1.5% S



Date: 4-2-13 Page: 2 of 2
 Project: E.E. Jabes 2nd Addition
 Item: Drainage

POINT C

$D.A. = 4.5 \text{ Ac.}$
 $C = 0.95$
 $I_p = 10.5 \text{ in.}$
 $Q_p = 0.6 \text{ cfs}$
 $Q = 0.25 \times 0.6 = 0.15 \text{ cfs}$
 USE 18" RCP @ 1.5% S

DIAMETER OF DRAIN IN INCHES	DISCHARGE IN CFS
18"	0.25
24"	0.50
30"	0.75
36"	1.00
42"	1.25
48"	1.50
54"	1.75
60"	2.00
66"	2.25
72"	2.50
78"	2.75
84"	3.00
90"	3.25
96"	3.50
102"	3.75
108"	4.00
114"	4.25
120"	4.50
126"	4.75
132"	5.00
138"	5.25
144"	5.50
150"	5.75
156"	6.00
162"	6.25
168"	6.50
174"	6.75
180"	7.00
186"	7.25
192"	7.50
198"	7.75
204"	8.00
210"	8.25
216"	8.50
222"	8.75
228"	9.00
234"	9.25
240"	9.50
246"	9.75
252"	10.00
258"	10.25
264"	10.50
270"	10.75
276"	11.00
282"	11.25
288"	11.50
294"	11.75
300"	12.00

DATE: 4-2-13
 DRAWN BY: [Name]
 CHECKED BY: [Name]
 PROJECT: E.E. Jabes 2nd Addition
 SHEET: 2 OF 2