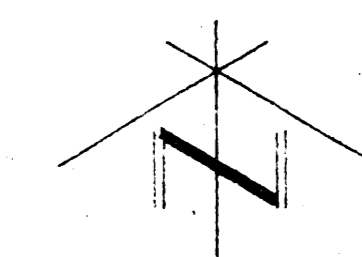


VICINITY MAP OF
PROPOSED
"K & N ADDITION"
TO WICHITA, SEDGWICK
COUNTY, KANSAS



SCALE: 1" = 25'

LEGEND

- - #4 Rebar with D Cap TTLSI CLS 22"-set
- ▲ - 60d Nail with D Cap TTLSI CLS 22"-set
- △ - PK Nail-set
- ∨ - Chiseled "V"-set
- ⊕ - Platted or calculated from plat information
- (M) - Measured or Calculated from Measurements
- (A) - Assumed Bearing Basis
- LP - Light Pole
- MH - Manhole
- OU - Overhead Utilities
- PP - Power Pole
- SS - Sanitary Sewer
- SS - Sanitary Sewer as per City of Wichita records, Sanitary Sewer Book J, Page 123. Not located in the field.
- WM - Water Meter

FILE #950974
Date of Topography: February 9, 1996

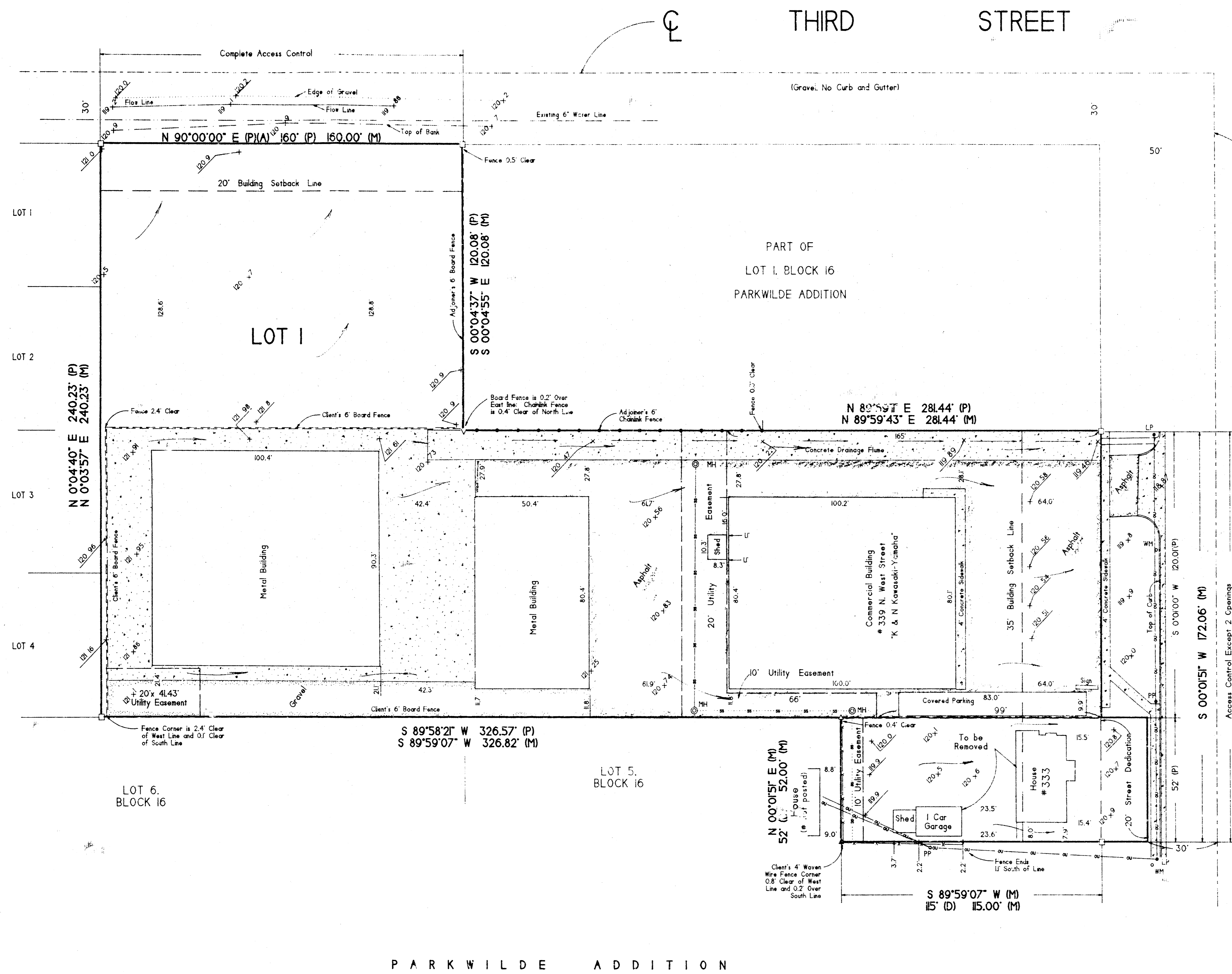
NOTES:

The 20' utility easement shown has been shifted 1' to the west to clear an existing building and to better center the easement on the utilities present. An existing 8' utility easement (Disc. Bk. 459, Page 491) running north and south along the east side of the southern part of the plat has been widened to 10'. Neither existing easement is shown, and both will be vacated on the final plat by virtue of K.S.A. 12-512(b) Amended.

City of Wichita records show a 12" water line 15' east of the east right-of-way line of West Street. Subject property appears to be serviced from this line.

MASTERBILT ADDITION

WEST STREET



TERRA TECH
LAND SURVEYING INC.

828 North Ohio
Wichita, Kansas 67214-3133
Tel: 316-267-0744, 1-800-253-4848
Fax: 316-267-8736