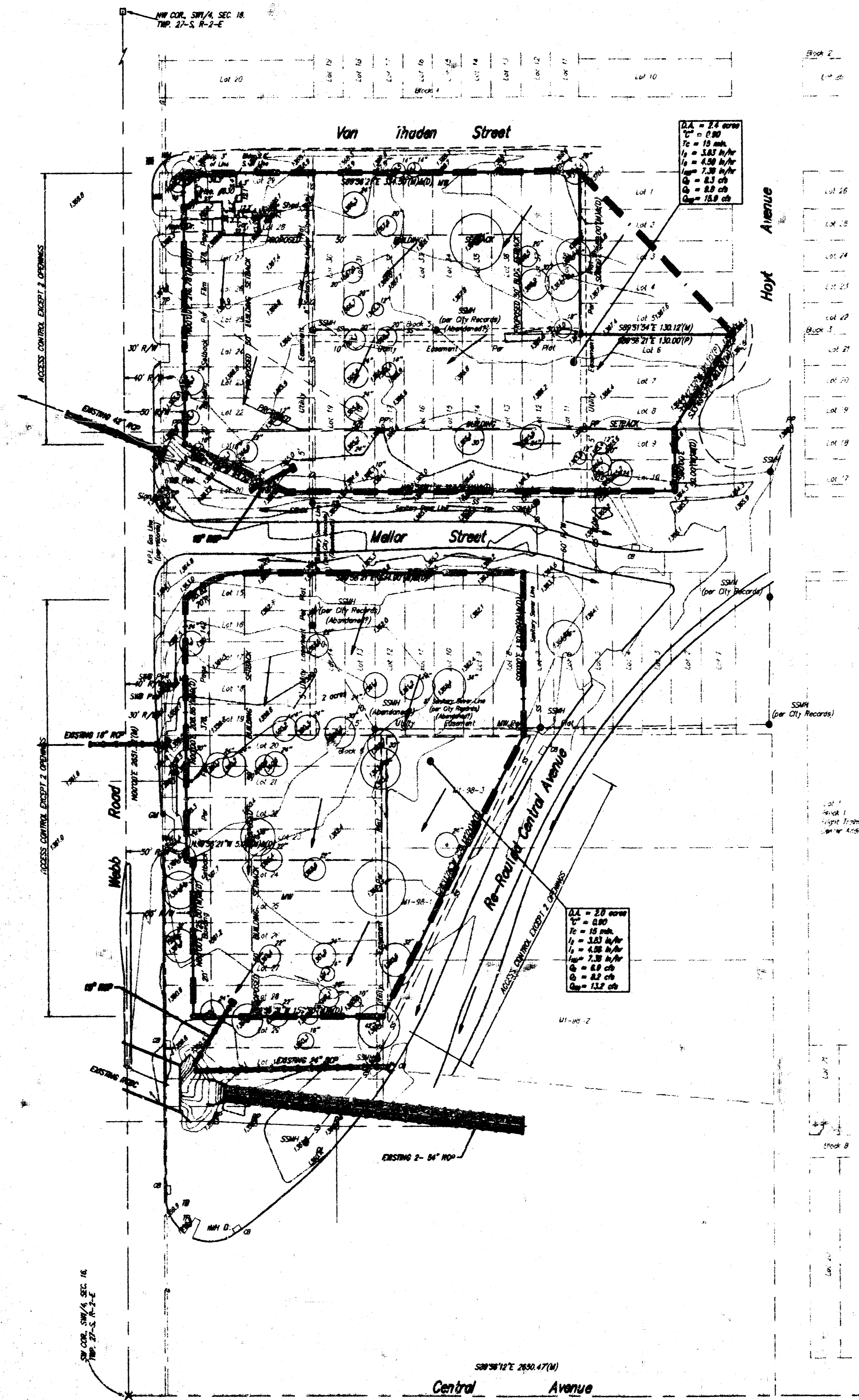
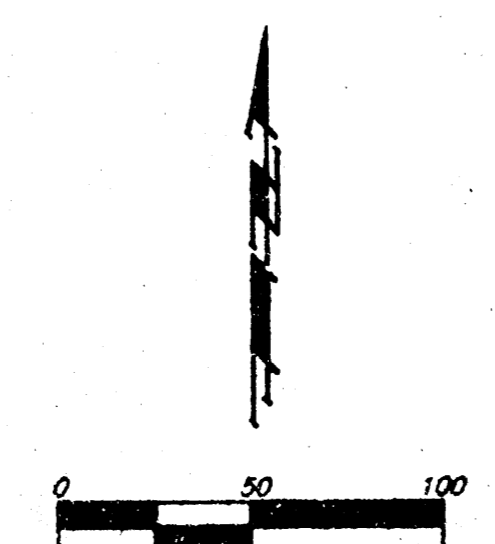


DRAINAGE PLAN KUHLMAN ADDITION WICHITA, SEDGWICK COUNTY, KANSAS



S.A. = 24' area
 T = 15' dia.
 R = 15' dia.
 L = 1.50' dia.
 W = 1.50' dia.
 S = 1.50' dia.
 M = 1.50' dia.
 B = 1.50' dia.

S.A. = 20' area
 T = 15' dia.
 R = 15' dia.
 L = 1.50' dia.
 W = 1.50' dia.
 S = 1.50' dia.
 M = 1.50' dia.
 B = 1.50' dia.



- CB = Catch Basin
 - CP = Catch Pit/Inlet
 - DI = Drop Inlet
 - DL = Detector Loop
 - FL = Fire Hydrant
 - OM = Oil Meter
 - OP = Gas Pipe
 - QA = Gas Anchor
 - MM = Monitoring Well
 - FP = Floor Plate
 - SP = Signal Pole
 - SN = Sign
 - SSM = Sanitary Sewer Manhole
 - SSM-P = Sanitary Sewer Manhole
 - SSM-S = Stormwater Sewer Manhole
 - T = Tree
 - TB = Traffic Bus
 - TM = Traffic Manhole
 - TP = Telephone Pole
 - WM = Water Meter
- (M) = MEASURED
 (P) = PLATED
 (D) = DECORATED

- ⊙ = 1/2" Baughman Rubber Seal
- = 1/2" Iron Pipe Found
- ⊖ = 1/2" Baughman Rubber Seal On 3" Offset
- ⊠ = Section Corner P.I.K. Nail Found
- ⊡ = Section Corner 1/4" Iron Pipe Found
- X = Section Corner Cross Found

