

OWNER: HARRY B. BROWN JR. et al  
 CONTRACT PURCHASER: GEORGE SHERMAN  
 8609 Stoneridge Wichita, Ks. 67206  
 ENGINEER: P. E. C. p.a.  
 303 S. Topeka Wichita, Ks. 67202

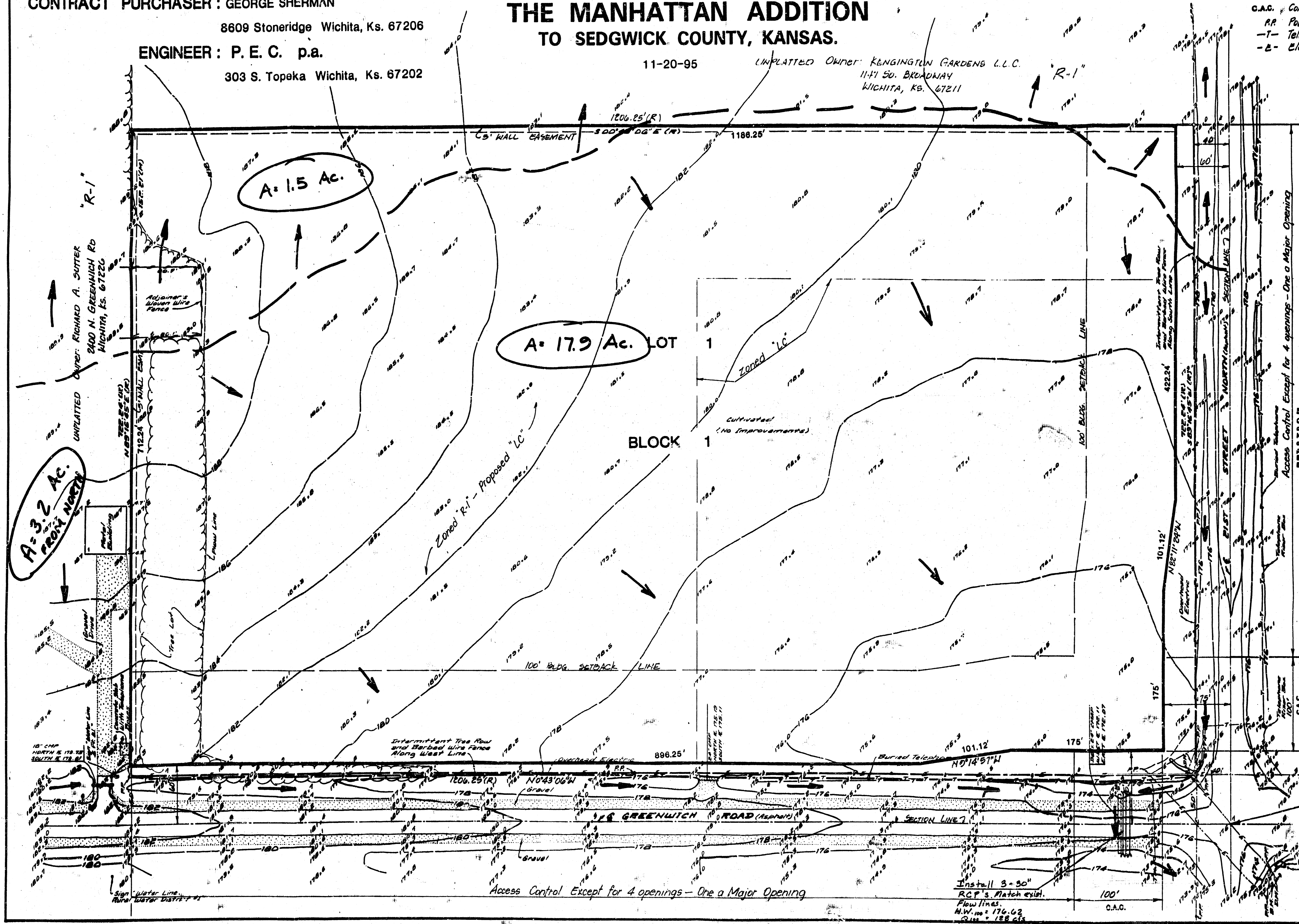
# DRAINAGE CONCEPT THE MANHATTAN ADDITION TO SEDGWICK COUNTY, KANSAS.

11-20-95

UNPLATTED OWNER: KENINGTON GARDENS L.L.C.  
 1141 So. Broadway  
 WICHITA, KS. 67211

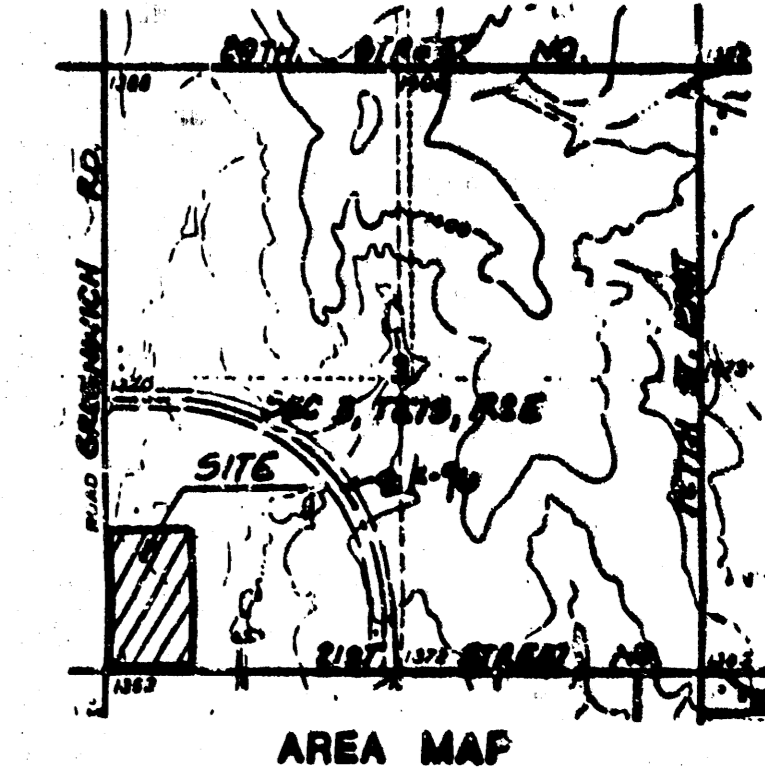
LEGEND

- C.A.C. Complete Access Control
- P.P. Power Pole
- T- Telephone Line
- E- Electric (Power) Line



SCALE: 1" = 50'  
 0" = 4" REBAR WITH I.D. CAP  
 1" = 1" RECORD INFORMATION  
 FROM BOUNDARY SURVEY  
 DATED MAY 20, 1988, BY  
 BAUGHMAN COMPANY, P.A.  
 (N) = MEASURED  
 B.M. = BENCH MARK  
 D.M. = DEAD MAN (BURY WIRE  
 ANCHOR)  
 P.P. = POWER POLE  
 CONTOUR INTERVAL = TWO FEET  
 FILE # 380851  
 DATE OF TOPOGRAPHY  
 3 NOVEMBER 1988  
 ADD 187.4 TO ELEVATIONS  
 FOR NVD OF 1988

BENCH MARK:  
 City of Wichita dia. 41 feet south and 88 feet west  
 of Iron at cantline of Greenway and 21st Street  
 North, 17.0 feet southwest of asphalt, 14.3 feet east  
 of face of power pole, 17.0 feet west of face of  
 power pole.  
 Elevation = 173.88 City Datum  
 Elevation = 1361.38 NVD 28



LEGEND  
 Direction of Flow

S.W. Cor. Sec 3, T21S  
 R2E of 6th PM.

Drainage from Lot 1 to be routed  
 to the ditch via drives, parking lots,  
 flumes, private storm water sewers,  
 or other approved drainage devices.

Access Control Except for 4 openings - One a Major Opening

Install 3 - 30"  
 RCP's Match exist.  
 Flow lines  
 M.W. = 176.62  
 2.4m = 138.65