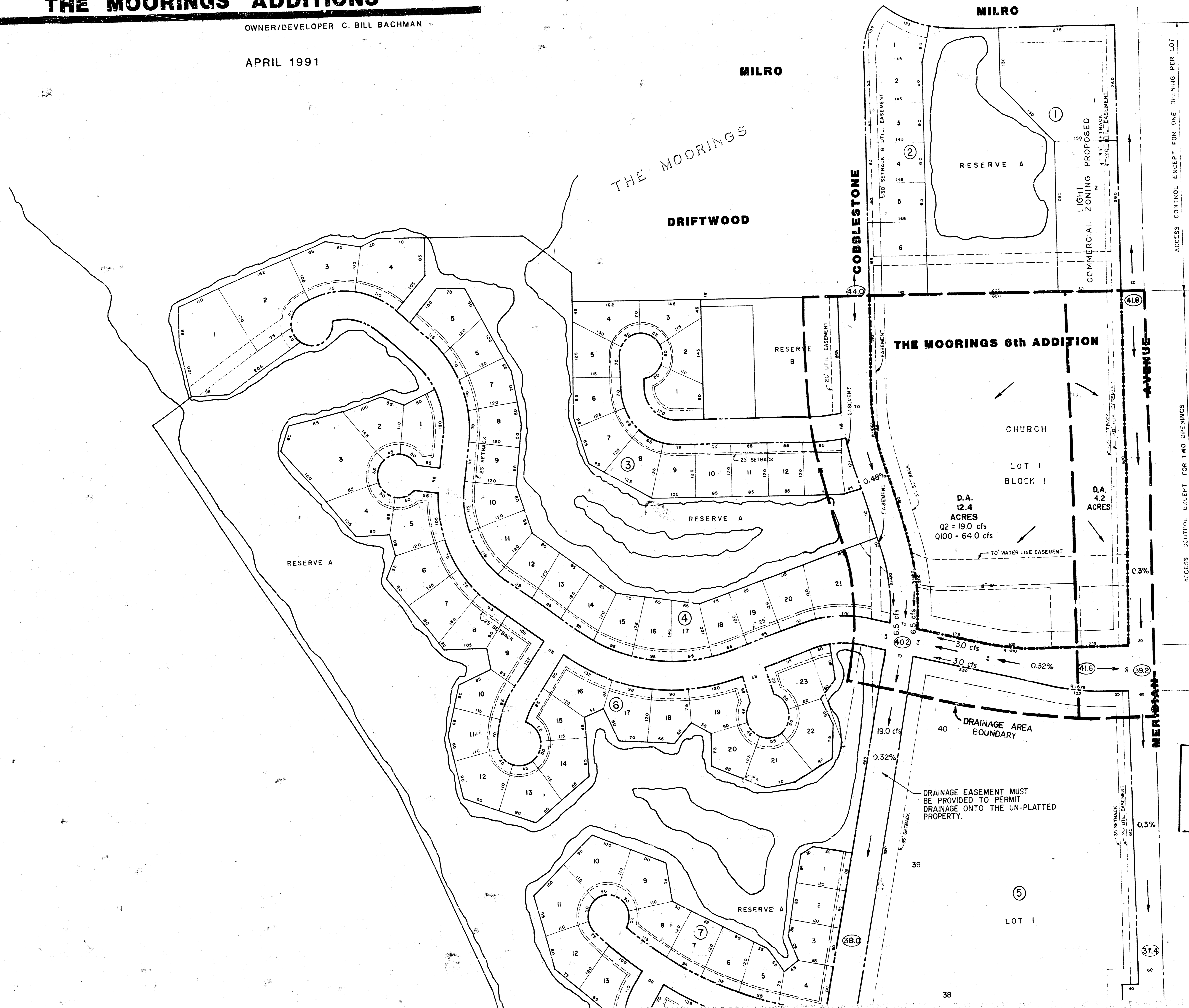


DRAINAGE PLAN FOR 6TH ADDN.

THE MOORINGS ADDITIONS

OWNER/DEVELOPER C. BILL BACHMAN

APRIL 1991



Q2 = 6.4 cfs
(0.42' DEEP)
Q100 = 21.7 cfs
(0.76' DEEP)
(STORM SEWER NOT
REQUIRED)

**APPROVED
DRAINAGE PLAN**

ACCESS CONTROL EXCEPT FOR ONE OPENING PER LOT

ACCESS CONTROL EXCEPT FOR TWO OPENINGS

COMPLETE ACCESS CONTR