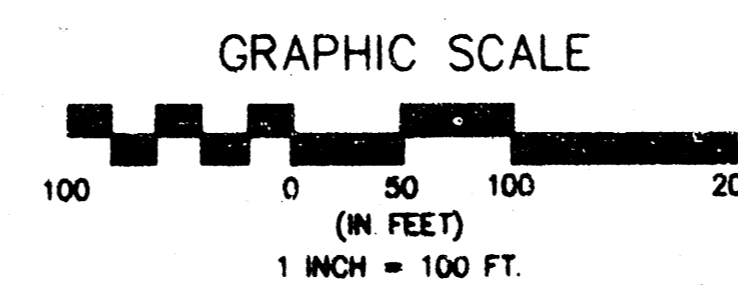
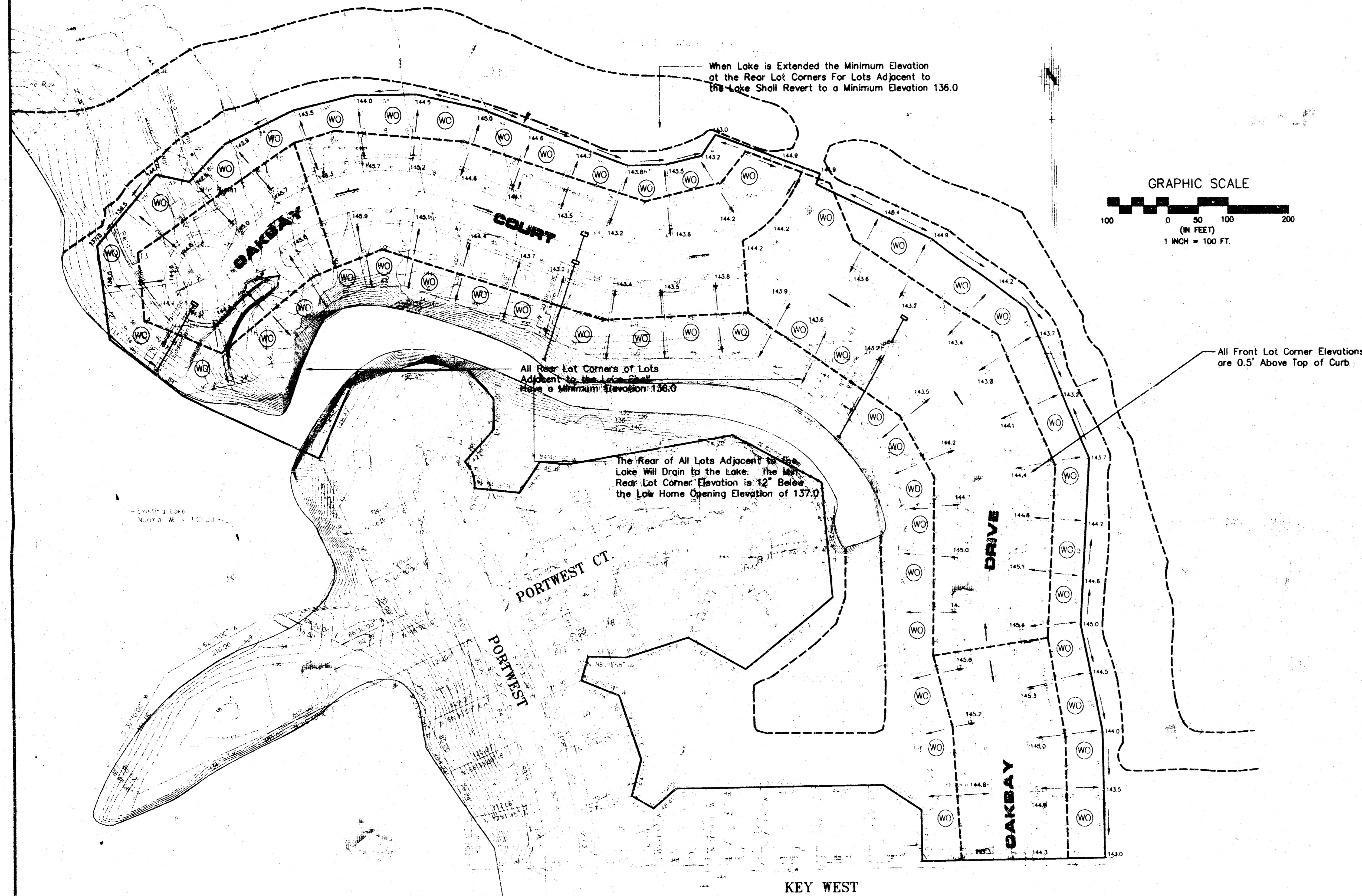


LOT DRAINAGE PLAN THE MOORINGS 7TH ADDITION

February 1993
Revised January 28, 1998



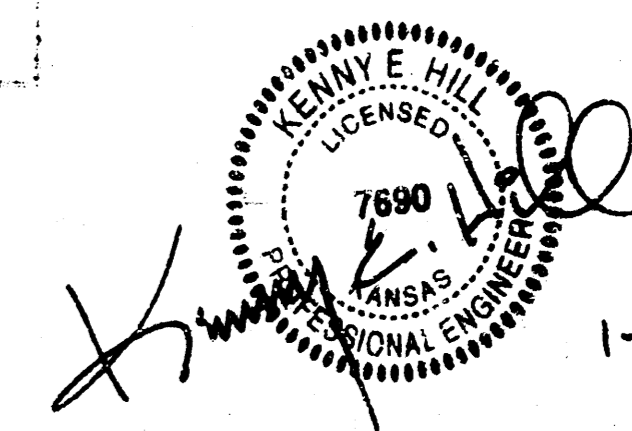
NOTES:

1. Topo Survey Date 6-24-92
B.M. #7-1 59' West & 32.3' North of Meridian and Keywest Elev. 141.85(City of Wichita Datum)
B.M. #7-2 "+" cut on center 10' curb inlet at East side cul-de-sac bulb of Portwest Court in The Moorings 5th Addition Elev. 142.30 (City of Wichita Datum)
2. Reserve A is reserved for Open Space, a lake and Boat Docks to be owned and maintained by the owners of the adjacent lots.
3. Lots adjacent to the Lake shall have a continuous minimum high point ground Elevation of 143.0 City Datum.

⊙ Walkout Basement

F:\TEMP\512\Lot-Drain.dwg Wed Jan 28 14:46:40 1998 Steve Schmidt

PE POE & ASSOCIATES OF KANSAS, INC.
CONSULTING ENGINEERS
440 E. Centre, Suite 200 • Wichita, KS 67208 • 316/855-1114 • Fax: 316/855-4444



1-28-98