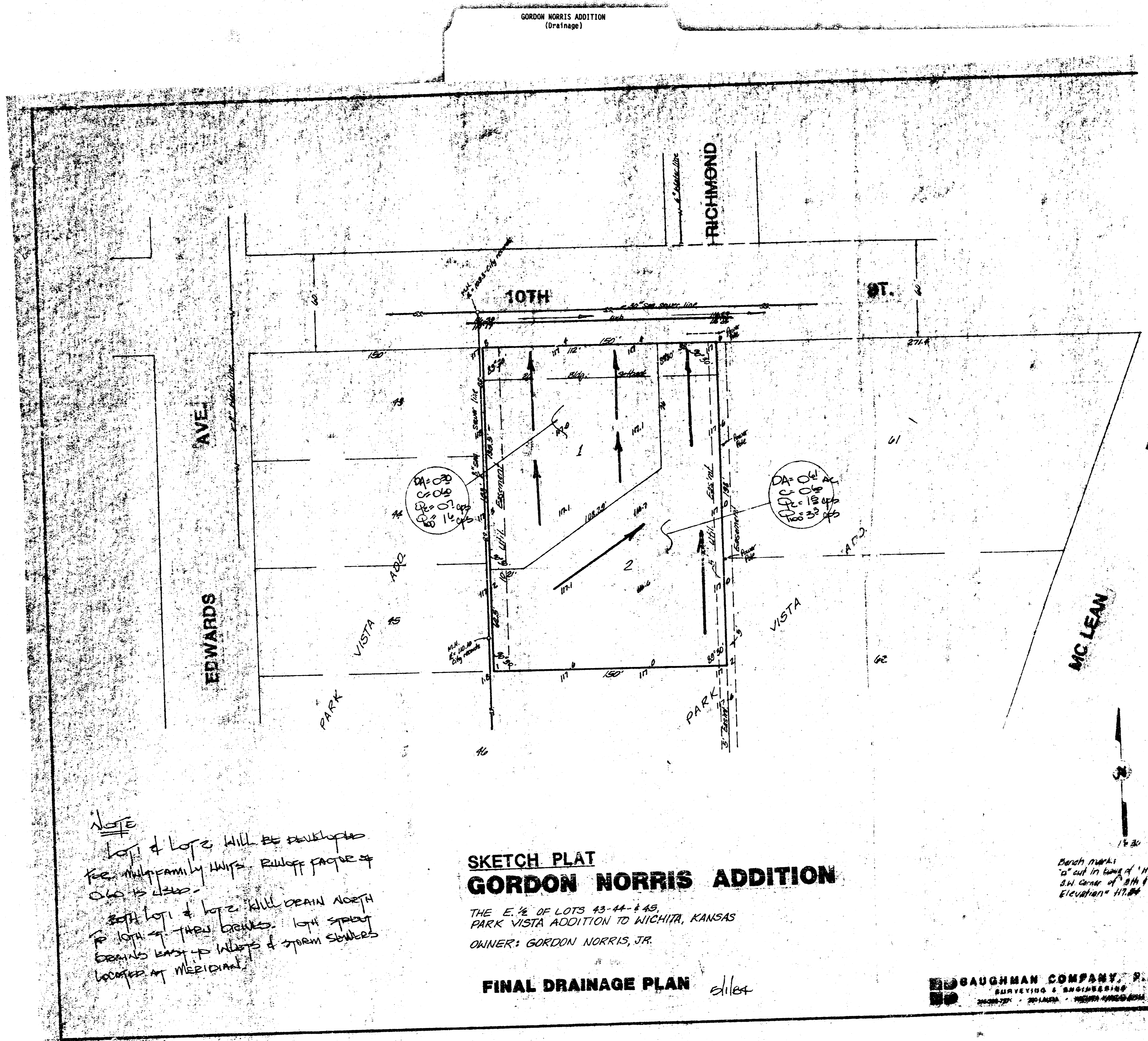


GORDON NORRIS ADDITION  
(Drainage)



NOTE  
 Lots 1 & 2 will be developed  
 for multifamily units. Runoff from  
 lots 1 & 2  
 Both lots 1 & 2 will drain north  
 to lot 1 & 2. 10th street  
 drains east to alleys & storm sewers  
 located at Meridian.

**SKETCH PLAT**  
**GORDON NORRIS ADDITION**

THE E. 1/2 OF LOTS 43-44 & 45,  
 PARK VISTA ADDITION TO WICHITA, KANSAS  
 OWNER: GORDON NORRIS, JR.

**FINAL DRAINAGE PLAN** *elias*

Each mark  
 1" out in line of "H.P.  
 3/4" center of 3/4" of  
 Elevation = 117.00

**GAUGHMAN COMPANY, P.A.**  
 SURVEYING & ENGINEERING  
 2001 W. 20th St. - WICHITA, KANSAS 67203